

Product datasheet for **RC219437**

GPR110 (ADGRF1) (NM_025048) Human Tagged ORF Clone

Product data:

Product Type:	Expression Plasmids
Product Name:	GPR110 (ADGRF1) (NM_025048) Human Tagged ORF Clone
Tag:	Myc-DDK
Symbol:	GPR110
Synonyms:	GPR110; hGPCR36; KPG_012; PGR19
Mammalian Cell Selection:	Neomycin
Vector:	pCMV6-Entry (PS100001)
E. coli Selection:	Kanamycin (25 ug/mL)
ORF Nucleotide Sequence:	>RC219437 representing NM_025048 Red=Cloning site Blue=ORF Green=Tags(s)

TTTTGTAATACGACTCACTATAGGGCGCCGGGAATTCGTCGACTGGATCCGGTACCGAGGAGATCTGCC
GCC**CGATCGCC**

ATGAAAGTTGGAGTGCTGTGGCTCATTCTTTCTTCCACCTTCACTGACGGCCACGGTGGCTTCTGGGGA
AAAATGATGGCATCAAAACAAAAAAGAAGCTATTGTGAATAAGAAAAACATCTAGGCCAGTCGAAGA
ATATCAGCTGCTGCTTCAGGTGACCTATAGAGATTCCAAGGAGAAAAGAGATTTGAGAAATTTTCTGAAG
CTCTTGAAGCCTCATTATTATGGTCACATGGGCTAATTAGAATTATCAGAGCAAAGGCTACCACAGACT
GCAACAGCCTGAATGGAGTCCTGCAGTGTACCTGTGAAGACAGCTACACCTGGTTTCTCCCTCATGCCT
TGATCCCCAGAAGTCTACCTTCACACGGCTGGAGCACTCCCAAGCTGTGAATGTCATCTCAACAACCTC
AGCCAGAGTGCAATTTCTGTGAGAGAACAAGATTTGGGGCACTTTCAAATTAATGAAAGTTTACAA
ATGACCTTTTGAATTCATCTTCTGCTATACTCCAAATATGCAAATGGAATTGAAATCAACTTAAAAA
AGCATATGAAAGAATTCAAGTTTTGAGTCGGTTCAGGTCACCCAATTTGAAATGTCACCTTTGTGCGCC
AAGTTGGAGTGAATGGACAATC

ACGCGTACGCGGCGCTCGAGCAGAACTCATCTCAGAAGAGGATCTGGCAGCAAATGATATCTGGATT
ACAAGGATGACGACGATAAGGTTTAA



[View online »](#)

Protein Sequence: >RC219437 representing NM_025048
Red=Cloning site Green=Tags(s)

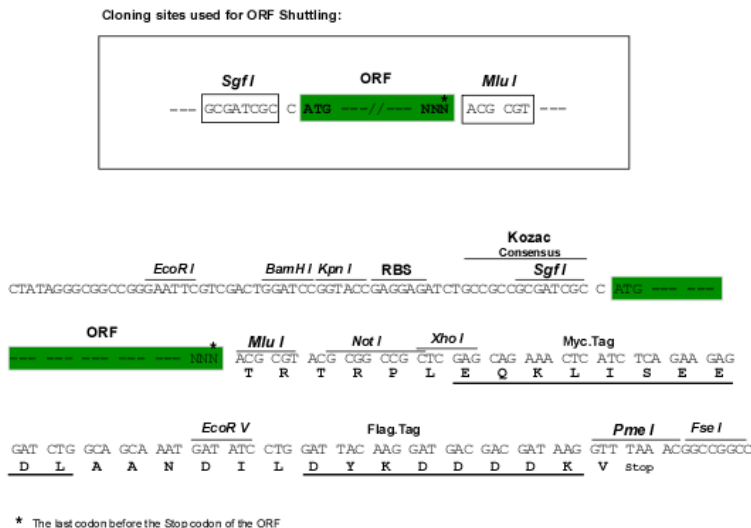
MKVGVLWLISFFFTFDGHGGFLGKNDGIKTKKELIVNKKKHLGPVEEYQLLLQVTYRDSKEKRDLRNFLK
 LLKPPLLWSHGLIRIIRAKATTDNCNSLNGVLQCTCEDSYTWFPSPCLDPQNCYLHTAGALPSCHEHLNLL
 SQSVNFCERTKIWGTFKINERFTNDLLNSSSAIYSKYANGIEIQLKKAYERIQGFESVQVTQFRMSLLSP
 KLECNGTI

TRTRPLEQKLISEEDLAANDILDYKDDDDKV

Chromatograms: https://cdn.origene.com/chromatograms/mk6707_a04.zip

Restriction Sites: SgfI-MluI

Cloning Scheme:



ACCN: NM_025048

ORF Size: 654 bp

OTI Disclaimer: The molecular sequence of this clone aligns with the gene accession number as a point of reference only. However, individual transcript sequences of the same gene can differ through naturally occurring variations (e.g. polymorphisms), each with its own valid existence. This clone is substantially in agreement with the reference, but a complete review of all prevailing variants is recommended prior to use. [More info](#)

OTI Annotation: This clone was engineered to express the complete ORF with an expression tag. Expression varies depending on the nature of the gene.

Components: The ORF clone is ion-exchange column purified and shipped in a 2D barcoded Matrix tube containing 10ug of transfection-ready, dried plasmid DNA (reconstitute with 100 ul of water).

Reconstitution Method:

1. Centrifuge at 5,000xg for 5min.
2. Carefully open the tube and add 100ul of sterile water to dissolve the DNA.
3. Close the tube and incubate for 10 minutes at room temperature.
4. Briefly vortex the tube and then do a quick spin (less than 5000xg) to concentrate the liquid at the bottom.
5. Store the suspended plasmid at -20°C. The DNA is stable for at least one year from date of shipping when stored at -20°C.

RefSeq: [NM_025048.4](#)

RefSeq Size: 1437 bp

RefSeq ORF: 657 bp

Locus ID: 266977

UniProt ID: [Q5T601](#)

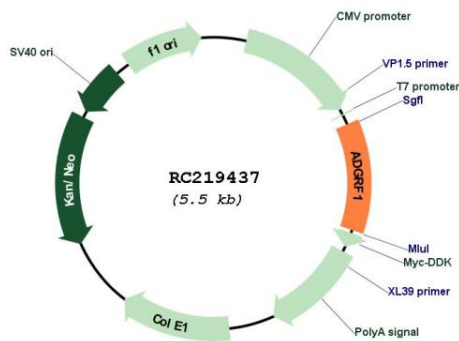
Cytogenetics: 6

Protein Families: Druggable Genome, Transmembrane

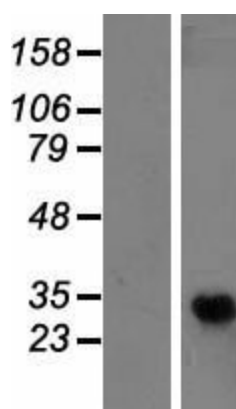
MW: 24.7 kDa

Gene Summary: Orphan receptor.[UniProtKB/Swiss-Prot Function]

Product images:



Circular map for RC219437



Western blot validation of overexpression lysate (Cat# [LY410926]) using anti-DDK antibody (Cat# [TA50011-100]). Left: Cell lysates from untransfected HEK293T cells; Right: Cell lysates from HEK293T cells transfected with RC219437 using transfection reagent MegaTran 2.0 (Cat# [TT210002]).