

Product datasheet for **RC219433**

ANKRD5 (ANKEF1) (NM_022096) Human Tagged ORF Clone

Product data:

Product Type:	Expression Plasmids
Product Name:	ANKRD5 (ANKEF1) (NM_022096) Human Tagged ORF Clone
Tag:	Myc-DDK
Symbol:	ANKRD5
Synonyms:	ANKRD5
Mammalian Cell Selection:	Neomycin
Vector:	pCMV6-Entry (PS100001)
E. coli Selection:	Kanamycin (25 ug/mL)



[View online »](#)

**ORF Nucleotide
Sequence:**

>RC219433 ORF sequence
 Red=Cloning site Blue=ORF Green=Tags(s)

TTTTGTAATACGACTCACTATAGGGCGGCCGGGAATTCGTCGACTGGATCCGGTACCGAGGAGATCTGCC
 GCC**CGGATCGCC**

ATGGCTTTAGCAGATAAGGGACTTGAGAACTTACAGATCTACAAAGTTCTCAATGTGTGCGGAACAAAG
 ACAAGAAGCAGATAGAGAAGCTGACCAAGCTTGGATACCCTGAAC TAATCAATTATACAGAACCCATTAA
 TGGGCTTAGTGCTTTGCACTTAGCCTCAGTTTCCAATGATATTGATATGGTCAGCTTTCTCCTTGACCTT
 GGTGCTCACCTGATGTGCAAGACCGAATGGGCTGTACTCCACAATGAGGGCTGCAGAAGTGGCCATG
 AATTGTCAATGGAATATTAGCAAAGGCAAGGCTGATAGACTATAGTTGATAATGAAGAAAAGGTGT
 TTTGTTTTACTGCATTTTACCGACTAAGCGCATTATCGCTGTGCTCTGATCGCCCTTGAACATGGTGCA
 GATGTCAACAATTCTACCTATGAAGGAAAGCCAATATTCCTTAGAGCTTGTGAAGATGCACATGATGTTA
 AAGATGTGTGCCGACATTTTGGAAAAAGGAGCCAATCCTAATGCAATCAACTCATCCACAGGCCGCAC
 AGCTTTAATGGAAGCGTCAAGAGAAGGGTGTAGTGAAATAGTTCGAGGCATATTGAAAGAGGAGGTGAA
 GTGAATGCATTTGACAACGACAGGCATCAGCTGCTCATTGCTGCTAAAGGAGCTTTTTCGATATAT
 TGAAGCTCTTTTTGCCTACAATGGAGACGTGGGGCTGATTTGATAAATGGGAACACACCACTTCATTA
 TGCTGCCATGGTGGTTTTGCAGACTGCTGTAATATATAGCTCAGCGAGGATGTGACCTGAAATGGAAG
 AATTTAGATCATAAAACGCCAGGGCTGTGGCTAAGGAAGCGGCTTCAAAGCAGCAAGCAAAGAAATAC
 GCCGAGCAGAGAGAATCGCTAATAAACTAGCCAGGCCAGGAGCCAAAAATCCAAATCCACTGTGGCCCT
 TAGACTGCACGATTGGTCCGTAGAAGCTGAGGCTTTCTCCGGGAAGCCTTTCGGTTTTAGACAGGGGT
 GATGGAAGCATCAGCAAGAACGACTTCGTGATGGTGTGGAGGAAAGGCAGGATTATGCAAGCTCAGAAC
 AGCTGGCTGCCATCGCTCACCTTCATGAGAAAACCCGGGAGGAGGGGTCAATATTAATGAATCTTTAA
 AGGAACAGATATTTAAACAAGTCTTTTGTCTTAGGATCGTATGGACCTAAGAAAAAGGAAAAAGGGATG
 GGCAAAAAAGGAAAGAAAGGGAATTTGTCTTACCCCTTCCAATCTGTGTCATTCTGAGTACGCGTTTT
 CACGCCGCGAGGATGGTGGGCCACCGTATTACATGATTGAGACCTACAAGAATGCACTGATAGCAGCCG
 GTTTAATAGAGATCATCCCCAGAACATCCCATCAGGATGACTCTGTTGGTACATTGATGATTCAGAG
 AAGGTATTTCAAACATTAATATTATCACCAAAGCAGGGGATCTGGCTTCTGAAAAAGGCCTTTGAAT
 CAGGAATACCTGTGGATATGAAGGATAATTATTACAAAACCTCCGCTAATGACGGCGTGTGCAAGTGGAAA
 CATAGATGTGGTCAAGTTTTCTTCTGAAAAAGGAGCTAACGTTAATGCAACAGATAACTTTCTGTGGACT
 CCACTTCATTTTGCATGCCATGCAGGCCAACAAAGACATTGTTGAGCTTCTGTTGATCTGGAGCTTTAA
 TAGATGCAGCTTCAATCAACAACCTCAACTCCTTTAAATAGAGCCATTGAAAGCTGCAGACTGGATACAGT
 AAAATACCTACTTGATATTGGTGCTAAATTCAGCTGGAAAAATAGAAAAGGGCATAGTGCCATGGACGTT
 GCAAAGGCATATGCTGATTATAGAATAATTGATCTGATTAAGAAAAAGCTAGATAACTTGCCGAAACCAG
 CAGAAAATCAAAAACCTAAAAGGCAAGACACCTCTATACTGAAGACTGAAGGCCCTGAAATTAAGAAAGA
 AGAGGAACTGCTGTCATCAATTTATGGTGTACCAACCACATCAGAGGGAAAGAAAGTACAGAAGGGTAAT
 GTGGTTTCACTGAATTCATTGATTACCAGTGGTTATACTAAGAAAGTGGATATCACATTTATTCCACGGA
 GGATTTGGAGTCTGAAGCCACAACAGCAGAGCTGATCAGGAAGAGGGAACCTACGGCGAGAGAGGTTTAC
 ACATGAGGTGGACTTCGACGATTTTATGATGCCTTTTTCAGAAGAACATCACAGAGAAAGCTCGAGCACTG
 GAAGCTGCCTGAAGACC

AGCGGACCGACGCGTACGCGGCCGCTCGAGCAGAACTCATCTCAGAAGAGGATCTGGCAGCAAATGATATCC
 TGGATTACAAGGATGACGACGATAAGGTTTAA

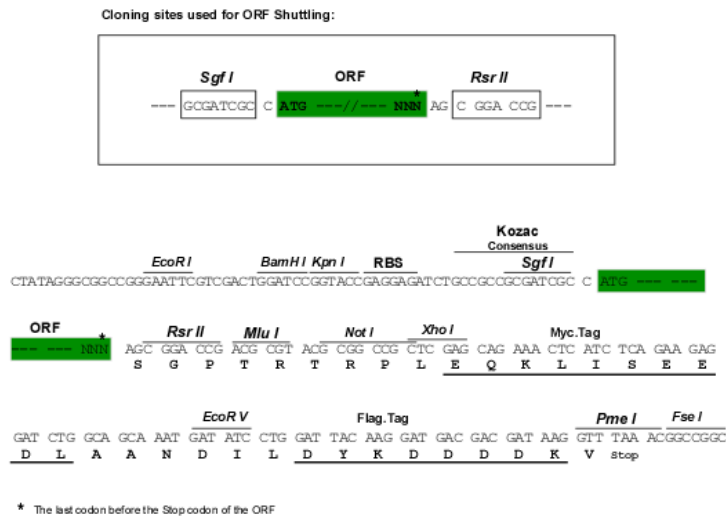
Protein Sequence: >RC219433 protein sequence
Red=Cloning site Green=Tags(s)

MALADKLENLQIYKVLQCVRNKDKKQIEKLTKLGYPELINYTEPIINGLSALHLASVSNDIDMVSFLLDL
GAHPDVQDRMGCTPTMRAAELGHELSMEILAKAKADMTIVDNEGKGVLFYCILPTKRHYRCALIALEHGA
DVNNSTYEGKPIFLRACEDAHDVKDVCLTFLEKGANPAINSSSTGRTALMEASREGVVEIVRGILERGGE
VNAFDNDRHHAHF AAKGGFFDILKLLFAYNGDVGLISINGNTPLHYAAMGGFADCKYIAQRGCDLKWK
NLDHKTPRAVAKEGGFKAASKEIRRAERIANKLARPGAKNPPLWALRLHDWSVEREAFLEAFVLDRG
DGSISKNDFVMVLEERQDYASSEQLAAIAHLHEKTRGGGVNINEFFKGRYLNKSFVLGSYGPKKKEKGM
GKKGKKGK FVLPICV IPEYAFPRRQDGGPPYMIETYKNVTDSSRFNRDHPPEHPIQDDSVWYIDDSE
KVFSNINIITKAGDLASLKKAFESGIPVDMKDNYKTPPLMTACASGNIDVVKFLLEKGANVNATDNFLWT
PLHFACHAGQQDIVELLVESGALIDAASINNSTPLNRAIESCRDVTVKYLLDIGAKFQLENRKGHSAMDV
AKAYADYRIIDLIKEKLDNLPKPAENQKLKGTTPPILKTEGPEIKKEEELLSSYIGVPTTSEGKKVQKGN
VVHLNSLITSGYTKKVDITFIPRRIWSPEATTAELIRKRELRERF THEVDFDDFMMPFQKNITEKARAL
EAALKT

SGP TRTRPLEQKLI SEEDLAANDILDYKDDDDKV

Chromatograms: https://cdn.origene.com/chromatograms/mk6623_d08.zip

Restriction Sites: Sgfl-RsrII

Cloning Scheme:


ACCN: NM_022096

ORF Size: 2328 bp

OTI Disclaimer: The molecular sequence of this clone aligns with the gene accession number as a point of reference only. However, individual transcript sequences of the same gene can differ through naturally occurring variations (e.g. polymorphisms), each with its own valid existence. This clone is substantially in agreement with the reference, but a complete review of all prevailing variants is recommended prior to use. [More info](#)

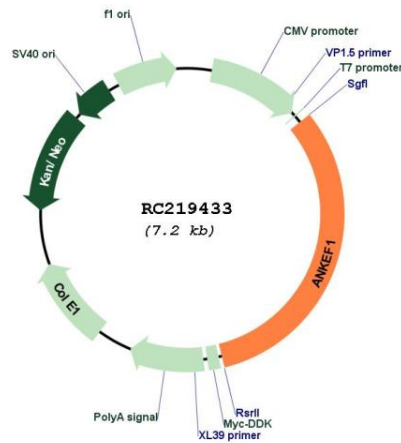
OTI Annotation: This clone was engineered to express the complete ORF with an expression tag. Expression varies depending on the nature of the gene.

Components: The ORF clone is ion-exchange column purified and shipped in a 2D barcoded Matrix tube containing 10ug of transfection-ready, dried plasmid DNA (reconstitute with 100 ul of water).

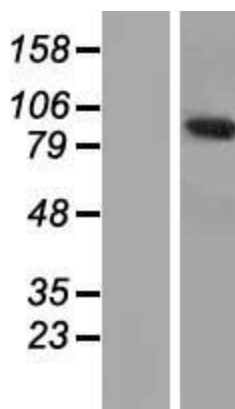
- Reconstitution Method:**
1. Centrifuge at 5,000xg for 5min.
 2. Carefully open the tube and add 100ul of sterile water to dissolve the DNA.
 3. Close the tube and incubate for 10 minutes at room temperature.
 4. Briefly vortex the tube and then do a quick spin (less than 5000xg) to concentrate the liquid at the bottom.
 5. Store the suspended plasmid at -20°C. The DNA is stable for at least one year from date of shipping when stored at -20°C.

RefSeq Size: 3839 bp
RefSeq ORF: 2331 bp
Locus ID: 63926
UniProt ID: [Q9NU02](#)
Cytogenetics: 20p12.2
MW: 86.6 kDa

Product images:



Circular map for RC219433



Western blot validation of overexpression lysate (Cat# [LY411765]) using anti-DDK antibody (Cat# [TA50011-100]). Left: Cell lysates from untransfected HEK293T cells; Right: Cell lysates from HEK293T cells transfected with RC219433 using transfection reagent MegaTran 2.0 (Cat# [TT210002]).