

Product datasheet for **RC219432**

BAGE2 (NM_182482) Human Tagged ORF Clone

Product data:

Product Type: Expression Plasmids
Product Name: BAGE2 (NM_182482) Human Tagged ORF Clone
Tag: Myc-DDK
Symbol: BAGE2
Synonyms: CT2.2
Mammalian Cell Selection: Neomycin
Vector: pCMV6-Entry (PS100001)
E. coli Selection: Kanamycin (25 ug/mL)
ORF Nucleotide Sequence: >RC219432 representing NM_182482
Red=Cloning site Blue=ORF Green=Tags(s)

TTTTGTAATACGACTCACTATAGGGCGGCCGGAATTCGTCGACTGGATCCGGTACCGAGGAGATCTGCC
GCC**CGATCGCC**

ATGGCGGCTGGAGTGGTTTTCTGGCATTGTCTGCCAGCTGCTCCAAGCCAGGCTGATGAAGGAGGAGT
CCCCTGTGGTGGAGCTGGAGGTTGGAGCCTGAAGATGGCACAGCTCTCGATGTGCATTTTGAAGCACTTT
GGAGCCACTATCAAATGCTGTGAAGAGAAATGTACCCAGATGTATCATTATCCTTGTGCTGCAGGAGCCG
ACACCTTTCAGGATTTTCAGTCACATCTTCTGCTTTGTCCAGAACACATTGACCAAGCTCCTGAAAGATC
GAAGGAAGATGCAAACGTGCAGTGTGCGACAGCCCGGAGACCTCT

ACGCGTACGCGGCCGCTCGAGCAGAAACTCATCTCAGAAGAGGATCTGGCAGCAAATGATATCCTGGATT
ACAAGGATGACGACGATAAGGTTTAA

Protein Sequence: >RC219432 representing NM_182482
Red=Cloning site Green=Tags(s)
MAAGVVFALSAQLLQARLMKEESPVVSWRLEPEDGTALDVHFVSTLEPLSNAVKRNVPRCIIILVLQEP
TPFRISVTSSCFVQNTLTKLLKDRRKMQTVQCATARETS

TRTRPLEQKLISEEDLAANDILDYKDDDDKV

Chromatograms: https://cdn.origene.com/chromatograms/mk8019_d08.zip

Restriction Sites: SgfI-MluI



[View online »](#)

Cloning Scheme:


ACCN: NM_182482

ORF Size: 327 bp

OTI Disclaimer: The molecular sequence of this clone aligns with the gene accession number as a point of reference only. However, individual transcript sequences of the same gene can differ through naturally occurring variations (e.g. polymorphisms), each with its own valid existence. This clone is substantially in agreement with the reference, but a complete review of all prevailing variants is recommended prior to use. [More info](#)

OTI Annotation: This clone was engineered to express the complete ORF with an expression tag. Expression varies depending on the nature of the gene.

Components: The ORF clone is ion-exchange column purified and shipped in a 2D barcoded Matrix tube containing 10ug of transfection-ready, dried plasmid DNA (reconstitute with 100 ul of water).

- Reconstitution Method:**
1. Centrifuge at 5,000xg for 5min.
 2. Carefully open the tube and add 100ul of sterile water to dissolve the DNA.
 3. Close the tube and incubate for 10 minutes at room temperature.
 4. Briefly vortex the tube and then do a quick spin (less than 5000xg) to concentrate the liquid at the bottom.
 5. Store the suspended plasmid at -20°C. The DNA is stable for at least one year from date of shipping when stored at -20°C.

RefSeq: [NM_182482.2](#)

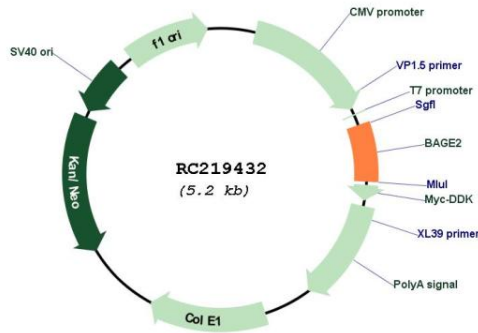
RefSeq Size: 1891 bp

RefSeq ORF: 330 bp

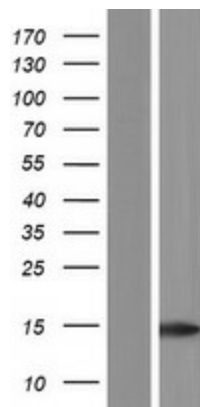
Locus ID: 85319

Cytogenetics: 21p11.2
 Protein Families: Druggable Genome
 MW: 12 kDa

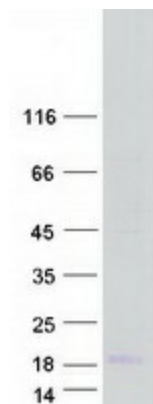
Product images:



Circular map for RC219432



Western blot validation of overexpression lysate (Cat# [LY405543]) using anti-DDK antibody (Cat# [TA50011-100]). Left: Cell lysates from untransfected HEK293T cells; Right: Cell lysates from HEK293T cells transfected with RC219432 using transfection reagent MegaTran 2.0 (Cat# [TT210002]).



Coomassie blue staining of purified BAGE2 protein (Cat# [TP319432]). The protein was produced from HEK293T cells transfected with BAGE2 cDNA clone (Cat# RC219432) using MegaTran 2.0 (Cat# [TT210002]).