

Product datasheet for **RC219431**

REX1BD (NM_001100418) Human Tagged ORF Clone

Product data:

Product Type: Expression Plasmids
Product Name: REX1BD (NM_001100418) Human Tagged ORF Clone
Tag: Myc-DDK
Symbol: REX1BD
Synonyms: C19orf60
Mammalian Cell Selection: Neomycin
Vector: pCMV6-Entry (PS100001)
E. coli Selection: Kanamycin (25 ug/mL)
ORF Nucleotide Sequence: >RC219431 representing NM_001100418
 Red=Cloning site Blue=ORF Green=Tags(s)

TTTTGTAATACGACTCACTATAGGGCGGCCGGAATTCGTCGACTGGATCCGGTACCGAGGAGATCTGCC
 GCC**CGATCGCC**

ATGATCACCGAGACCGCGCGGAGCCTACGGTCCCTGCAGTGCCTGCTGCTGAGGAGGCCACCGAAGCTC
 GGGGACGCGAGGAGCCGGCGTGGCCCTGGAAAGACGCCCCGATCCGGACGCTGGTGCAGCGCATCCACCA
 GCTGCAGGCTGAGCGCGCAGGGCTTCCGCCACTGGAGGAGTGGTGGCGCCGGTGCAGGGCCTGAGA
 GCCTGGGGCGCGCCTCAGGGTCCCACATGCCGCAGAGGCCACCGCCAGTACCTGCCAGCGGCCCTG
 ACTACGACTTCGCGCGCTACCGGAGCACAGTGCACGGGGTGACCCAGGCCTTCGCCGCCCTCGCGGGA
 GGTGCTGGCGGTGGAAGCAGAGCTGGGCGGGCCTCGCAGGCAGCCGCTGCTCGCCGGCCAGTGCAGC
 CTGCAGGAGCTGGAGCAGACCGGCTGGGACGGTGGCCCTGCTGCAGTTGATGGAGACGCCAGAGCTGG
 CGGGGACGAGGACGCTGTACGGATGCAGCAGCTGAAAATGAAGGTAATTAACCATGGAGGCGATCAG
 CGAGGTTCTCCAGGACCTTAGGTTTGTGCGGAATCTGCCGAG

ACGCGTACGCGGCCGCTCGAGCAGAACTCATCTCAGAAGAGGATCTGGCAGCAATGATATCCTGGATT
 ACAAGGATGACGACGATAAGGTTTAA

Protein Sequence: >RC219431 representing NM_001100418
 Red=Cloning site Green=Tags(s)

MITETAAEPTVPAPAAEEATEARGREEPAWPWKDAPIRTLVQRHQLQAERAQGFRRLEEWLAPVQGLR
 AWGRGLRVPTCRRGHRQYLRSGPDYDFARYRSTVHGVTQAFAAASREVLAVEAELGGPRRQPLLAGHVRS
 LQELEQTRLGTVALLQLMETPELAGQEDAVRMQQLKMKVIKTMEAISEVLQDLRFDAESAE

TRTRPLEQKLISEEDLAANDILDYKDDDDKV



Chromatograms: https://cdn.origene.com/chromatograms/mg3278_g01.zip

Restriction Sites: SgfI-MluI

Cloning Scheme:



ACCN: NM_001100418

ORF Size: 603 bp

OTI Disclaimer: The molecular sequence of this clone aligns with the gene accession number as a point of reference only. However, individual transcript sequences of the same gene can differ through naturally occurring variations (e.g. polymorphisms), each with its own valid existence. This clone is substantially in agreement with the reference, but a complete review of all prevailing variants is recommended prior to use. [More info](#)

OTI Annotation: This clone was engineered to express the complete ORF with an expression tag. Expression varies depending on the nature of the gene.

Components: The ORF clone is ion-exchange column purified and shipped in a 2D barcoded Matrix tube containing 10ug of transfection-ready, dried plasmid DNA (reconstitute with 100 ul of water).

Reconstitution Method:

1. Centrifuge at 5,000xg for 5min.
2. Carefully open the tube and add 100ul of sterile water to dissolve the DNA.
3. Close the tube and incubate for 10 minutes at room temperature.
4. Briefly vortex the tube and then do a quick spin (less than 5000xg) to concentrate the liquid at the bottom.
5. Store the suspended plasmid at -20°C. The DNA is stable for at least one year from date of shipping when stored at -20°C.

RefSeq: [NM_001100418.2](#)

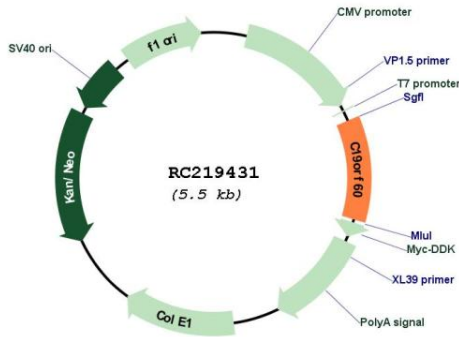
RefSeq Size: 900 bp

RefSeq ORF: 606 bp

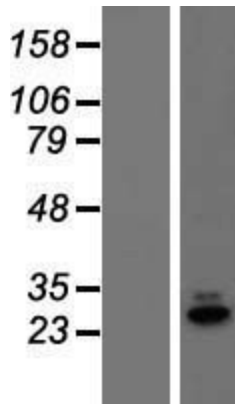
Locus ID: 55049

UniProt ID: [Q96EN9](#)
 Cytogenetics: 19p13.11
 MW: 22.4 kDa

Product images:



Circular map for RC219431



Western blot validation of overexpression lysate (Cat# [LY420257]) using anti-DDK antibody (Cat# [TA50011-100]). Left: Cell lysates from untransfected HEK293T cells; Right: Cell lysates from HEK293T cells transfected with RC219431 using transfection reagent MegaTran 2.0 (Cat# [TT210002]).