

## Product datasheet for **RC219430**

### LCK (NM\_001042771) Human Tagged ORF Clone

#### Product data:

Product Type:	Expression Plasmids
Product Name:	LCK (NM_001042771) Human Tagged ORF Clone
Tag:	Myc-DDK
Symbol:	LCK
Synonyms:	IMD22; LSK; p56lck; pp58lck; YT16
Mammalian Cell Selection:	Neomycin
Vector:	pCMV6-Entry (PS100001)
E. coli Selection:	Kanamycin (25 ug/mL)



[View online »](#)

**ORF Nucleotide Sequence:**

>RC219430 representing NM\_001042771  
 Red=Cloning site Blue=ORF Green=Tags(s)

TTTTGTAATACGACTCACTATAGGGCGGCCGGAATTCGTCGACTGGATCCGGTACCGAGGAGATCTGCC  
 GCC**CGGATCGCC**

ATGGGCTGTGGCTGCAGCTCACACCCGGAAGATGACTGGATGGAAAACATCGATGTGTGAGAAGTCC  
 ATTATCCCATAGTCCCACTGGATGGCAAGGGCAGCTGCTCATCCGAAATGGCTCTGAGGTGCGGGACCC  
 ACTGGTTACCTACGAAGGCTCCAATCCGCCGGCTTCCCCACTGCAAGACAACCTGGTTATCGCTCTGCAC  
 AGCTATGAGCCCTCTCACGACGGAGATCTGGGCTTTGAGAAGGGGGAACAGCTCCGCATCTGGAGCAGA  
 GCGGGCAGTGGTGAAGGCGCAGTCCCTGACCACGGGCCAGGAAGGCTTCATCCCCTTCAATTTTGTGGC  
 CAAAGCGAACAGCCTGGAGCCCGAACCTGGTTCTTCAAGAACCTGAGCCGCAAGGACGCGGAGCGGCAG  
 CTCTGGCGCCCGGAACACTCACGGCTCTTCTCATCCGGGAGAGCGAGAGCACCGGGGATCGTTTT  
 CACTGTCCGTCCGGGACTTCGACCAGAACCAGGGAGAGGTGGTGAACATTACAAGATCCGTAATCTGGA  
 CAACGGTGGCTTCTACATCTCCCCTCGAATCACTTTTCCGGCCTGCATGAACTGGTCCGCCATTACACC  
 AATGCTTCAGATGGGCTGTGCACACGGTTGAGCCGCCCTGCCAGACCCAGAAGCCCGAGAAGCCGTGGT  
 GGGAGGACGAGTGGGAGGTTCCAGGGAGACGCTGAAGCTGGTGGAGCGGCTGGGGGCTGGACAGTTCGG  
 GGAGGTGTGGATGGGTTACTACAACGGGCACACGAAGGTGGCGGTGAAGAGCCTGAAGCAGGGCAGCATG  
 TCCCCGGACGCCTTCTGGCCGAGGCCAACCTCATGAAGCAGCTGCAACACCAGCGGCTGGTTCCGGCTCT  
 ACGCTGTGGTCAACCAGGAGCCCATCTACATCACTGAATACATGGAGAATGGGAGTCTAGTGGATTT  
 TCTCAAGACCCCTCAGGCATCAAGTTGACCATCAACAACTCCTGGACATGGCAGCCCAAATTCAGAA  
 GGCATGGCATTCAATGAAGAGCGGAATTATATTCATCGTGACCTTCGGGCTGCCAACATTCTGGTGTCTG  
 ACACCTGAGCTGCAAGATTGCAGACTTTGGCCTAGCACGCCTCATTGAGGACAACGAGTACACGCCAG  
 GGAGGGGCCAAGTTTCCATTAAAGTGGACAGCGCCAGAAGCCATTAACACTACGGGACATTACCATCAAG  
 TCAGATGTGTGGTCTTTTGGATCCTGCTGACGAAAATTGTACCCACGGCCGCATCCCTTACCCAGGGA  
 TGACCAACCCGGAGGTGATTCAGAACCTGGAGCGAGGCTACCGCATGGTGCGCCCTGACAACTGTCCAGA  
 GGAGCTGTACCAACTCATGAGGCTGTGCTGGAAGGAGCGCCAGAGGACCGGCCACCTTTGACTACCTG  
 CGCAGTGTGCTGGAGGACTTCTTACGGCCACAGAGGGCCAGTACCAGCCTCAGCCT

**ACGCGT**ACGCGGCCGCTCGAGCAGAACTCATCTCAGAAGAGGATCTGGCAGCAAATGATATCTGGATT  
 ACAAGGATGACGACGATAAGGTTTAA

**Protein Sequence:**

>RC219430 representing NM\_001042771  
 Red=Cloning site Green=Tags(s)

MGCGCSSHPEDDWMENIDVCENCHYPIVPLDGKGTLLIRNGSEVRDPLVTEGNSPPASPLQDNLVIALH  
 SYEPSHDGDLGFEKGEQLRILEQSGEWWKAQSLTTGQEGFIPFNFVAKANSLEPEPWFKNLSRKAERQ  
 LLAPGNTHGSFLIRESESTAGSFLSVRFDQNGEVVKHYKIRNLDNGGFYISPRITFPGLHELVRHYT  
 NASDGLCTRLSRPCQTQKPQKPWWEDEWEVPRETLKLVRLGAGQFGEVWMGYNGHTKVAVKSLKQGS  
 SPDAFLAEANLMKQLQHQRVRLYAVVTQEPIYIITEYMENGLVDFLKTSPGIKLTINKLLDMAAQIAE  
 GMAFIEERNYIHRDLRAANILVSDTLCKIADFLARLIEDNEYTAREGAKFPIKWTAPEAINYGTFTIK  
 SDVWSFGILLTEIVTHGRIPYPGMTNPEVIQNLERGYRMVRPDCPEELYQLMRLCWKERPEDRPTFDYL  
 RSVLEDFFTATEGQYQPQ

**TRTRPLEQKLI**SEEDLAANDILDYKDDDDKV

**Chromatograms:**

[https://cdn.origene.com/chromatograms/mk6104\\_f03.zip](https://cdn.origene.com/chromatograms/mk6104_f03.zip)

**Restriction Sites:**

SgfI-MluI

**Cloning Scheme:**


**ACCN:** NM\_001042771

**ORF Size:** 1527 bp

**OTI Disclaimer:** The molecular sequence of this clone aligns with the gene accession number as a point of reference only. However, individual transcript sequences of the same gene can differ through naturally occurring variations (e.g. polymorphisms), each with its own valid existence. This clone is substantially in agreement with the reference, but a complete review of all prevailing variants is recommended prior to use. [More info](#)

**OTI Annotation:** This clone was engineered to express the complete ORF with an expression tag. Expression varies depending on the nature of the gene.

**Components:** The ORF clone is ion-exchange column purified and shipped in a 2D barcoded Matrix tube containing 10ug of transfection-ready, dried plasmid DNA (reconstitute with 100 ul of water).

**Reconstitution Method:**

1. Centrifuge at 5,000xg for 5min.
2. Carefully open the tube and add 100ul of sterile water to dissolve the DNA.
3. Close the tube and incubate for 10 minutes at room temperature.
4. Briefly vortex the tube and then do a quick spin (less than 5000xg) to concentrate the liquid at the bottom.
5. Store the suspended plasmid at -20°C. The DNA is stable for at least one year from date of shipping when stored at -20°C.

**Note:** Plasmids are not sterile. For experiments where strict sterility is required, filtration with 0.22um filter is required.

**RefSeq:** [NM\\_001042771.2](#), [NP\\_001036236.1](#)

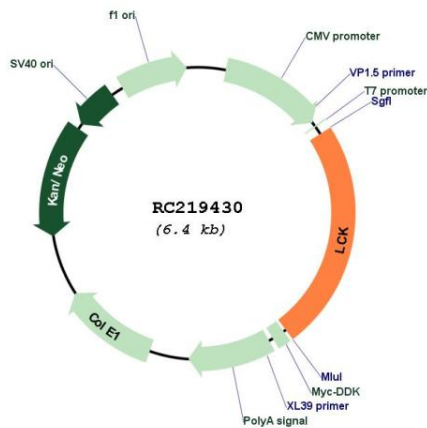
**RefSeq Size:** 2118 bp

**RefSeq ORF:** 1530 bp

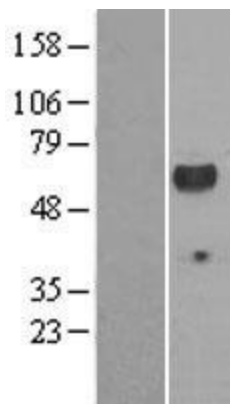
**Locus ID:** 3932

**UniProt ID:** [P06239](#)  
**Cytogenetics:** 1p35.2  
**Protein Families:** Druggable Genome, Protein Kinase, Stem cell - Pluripotency  
**Protein Pathways:** Natural killer cell mediated cytotoxicity, Primary immunodeficiency, T cell receptor signaling pathway  
**MW:** 57.8 kDa  
**Gene Summary:** This gene is a member of the Src family of protein tyrosine kinases (PTKs). The encoded protein is a key signaling molecule in the selection and maturation of developing T-cells. It contains N-terminal sites for myristylation and palmitylation, a PTK domain, and SH2 and SH3 domains which are involved in mediating protein-protein interactions with phosphotyrosine-containing and proline-rich motifs, respectively. The protein localizes to the plasma membrane and pericentrosomal vesicles, and binds to cell surface receptors, including CD4 and CD8, and other signaling molecules. Multiple alternatively spliced variants encoding different isoforms have been described. [provided by RefSeq, Aug 2016]

### Product images:



Circular map for RC219430



Western blot validation of overexpression lysate (Cat# [LY420808]) using anti-DDK antibody (Cat# [TA50011-100]). Left: Cell lysates from untransfected HEK293T cells; Right: Cell lysates from HEK293T cells transfected with RC219430 using transfection reagent MegaTran 2.0 (Cat# [TT210002]).