

Product datasheet for RC219428

C5ORF44 (TRAPPC13) (NM_001093755) Human Tagged ORF Clone

Product data:

Product Type:	Expression Plasmids
Product Name:	C5ORF44 (TRAPPC13) (NM_001093755) Human Tagged ORF Clone
Tag:	Myc-DDK
Symbol:	C5ORF44
Synonyms:	C5orf44; SHLD3
Mammalian Cell Selection:	Neomycin
Vector:	pCMV6-Entry (PS100001)
E. coli Selection:	Kanamycin (25 ug/mL)
ORF Nucleotide Sequence:	>RC219428 representing NM_001093755 Red=Cloning site Blue=ORF Green=Tags(s)

TTTTGTAATACGACTCACTATAGGGCGGCCGGAATTCGTCGACTGGATCCGGTACCGAGGAGATCTGCC
GCC**CGATCGCC**

ATGGAAGTGAATCCCCTAACAGGAGCACCTGCTGGCGCTAAAAGTGATGCGGCTGACTAAGCCTACTT
TATTCACCAATATCCCAGTAACATGTGAAGAGAAAAGACTTACCTGGAGATCTCTTAAACCAGCTGATGAG
AGATGATCCTTCAACCGTAAATGGTGCAGAAGTTTTAATGTTGGGAGAAATGCTGACTTTACCACAGAAT
TTTGGGAATATATTTTTGGGAGAGACCTTTCCAGTTATATCAGCGTTCATAATGATAGCAATCAAGTTG
TAAAAGACATATTAGTAAAAGCTGATCTTCAGACAAGTCTCAGCGTTTAAATCTTTCAGCCTCCAATGC
TGCAGTGGCTGAACTTAAACCGGATTGTTGTATTGATGATGTCATACATCATGAAGTCAAAGAAATTGGA
ACACACATCTTGGTATGTGCTGTGAGTTATACTCACTCAGGCTGGAGAAAAATGTATTTTCAGAAAATTTCT
TCAAATTTTCAGGTTCTCAAACCATTTGGATGTGAAAACCAAATTTTACAATGCAGAGAGTGACCTCAGTTC
TGTGACTGATGAAGTATTTCTGGAAGCCAGATTCAGAAATATGACAACCTCACCTATGTTTATGGAGAAG
GTTTCACTGGAGCCATCTATTATGTACAATGTAACAGAATTAATTCAGTCAGCCAAGCTGGAGAATGTG
TGTCTACGTTTGGGTCAAGAGCATATTTGCAACCAATGGATACACGCCAGTACTTATACTGCCTAAAGCC
AAAGAATGAATTTGCAGAAAAAGCAGGCATCATTAAAGGGAGTAACAGTAATTGGAAAAATGGATATAGTA
TGGAAAACAAATCTAGGTGAAAGGGGAAGTTACAGACCAGCCAACCTCAAAGAATGGCTCCAGGTTATG
GAGATGTTAGGTTGTCTTTGGAGGCAATACCAGATACCGTAAACCTTGAAGAACCTTTTCATATTACCTG
TAAAAAACAACACTGCAGCAGTGAAGGACTATGGATCTGGTTTTGGAAATGTGCAATACCAATTCATC
CACTGGTGTGGAATTTTCAGGAAGACAGCTGGGAAAGCTGCATCCAAGTCTTCGCTCTGTCTTGCCTTA
CTCTGCTTTCTCAGTACAGGGACTGCAAAGCATCTCTGGCTTAAGACTAACAGACACATTTCTAAAGAG
AACATATGAATATGATGACATCGCACAAAGTCTGTGTGGTATCTTCTGCCATTAAGTGGAAGC

ACGCGTACGCGGCCGCTCGAGCAGAAACTCATCTCAGAAGAGGATCTGGCAGCAAATGATATCCTGGATT
ACAAGGATGACGACGATAAGGTTTAA



[View online >](#)

Protein Sequence: >RC219428 representing NM_001093755
Red=Cloning site Green=Tags(s)

MEVNPPKQEHELLALKVMRLTKPTLFTNIPVTCEEKDLPGDLFNQLMRDDPSTVNGAEVLMGEMLTLPQN
 FGNIFLGETFSSYISVHNSNQVVKDILVKADLQTSSQRLNLSASNAVAELKPDCCIDDVIHHEVKEIG
 THILVCAVSYTTQAGEKMYFRKFFKFQVLKPLDVKTKFYNAESDLSVSTDEVFLEAQIQNMTTSPMFMEK
 VSLEPSIMYNVTELSVVSQAGECVSTFGSRAYLQPMDRQYLKPKNEFAEKAGIIKGVTVIGKLDIV
 WKTNLGERGRLQTSQLQRMAPGYGDVRLSLEAIPDTVNLEEPFHITCKITNCSSERTMDLVLEMCNTNSI
 HWCGISGRQLGKLPSSSLCLAL TLLSSVQGLQSI SGLRLTDTFLKRTYEYDDIAQVCVVS SAIKVES

TRTRPLEQKLISEEDLAANDILDYKDDDDKV

Chromatograms: https://cdn.origene.com/chromatograms/mk8019_d09.zip

Restriction Sites: SgfI-MluI

Cloning Scheme:



* The last codon before the Stop codon of the ORF

ACCN: NM_001093755

ORF Size: 1254 bp

OTI Disclaimer: The molecular sequence of this clone aligns with the gene accession number as a point of reference only. However, individual transcript sequences of the same gene can differ through naturally occurring variations (e.g. polymorphisms), each with its own valid existence. This clone is substantially in agreement with the reference, but a complete review of all prevailing variants is recommended prior to use. [More info](#)

OTI Annotation: This clone was engineered to express the complete ORF with an expression tag. Expression varies depending on the nature of the gene.

Components: The ORF clone is ion-exchange column purified and shipped in a 2D barcoded Matrix tube containing 10ug of transfection-ready, dried plasmid DNA (reconstitute with 100 ul of water).

- Reconstitution Method:**
1. Centrifuge at 5,000xg for 5min.
 2. Carefully open the tube and add 100ul of sterile water to dissolve the DNA.
 3. Close the tube and incubate for 10 minutes at room temperature.
 4. Briefly vortex the tube and then do a quick spin (less than 5000xg) to concentrate the liquid at the bottom.
 5. Store the suspended plasmid at -20°C. The DNA is stable for at least one year from date of shipping when stored at -20°C.

RefSeq: [NM_001093755.1](#), [NP_001087224.1](#)

RefSeq Size: 3120 bp

RefSeq ORF: 1257 bp

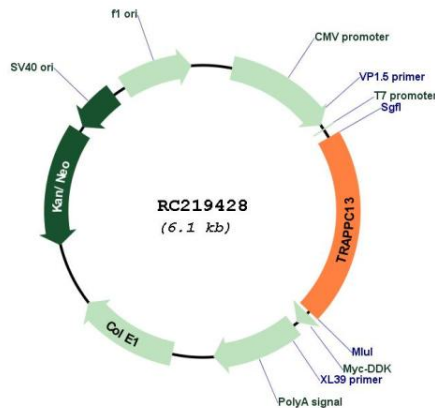
Locus ID: 80006

UniProt ID: [A5PLN9](#)

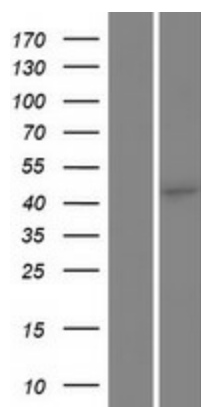
Cytogenetics: 5q12.3

MW: 46.4 kDa

Product images:



Circular map for RC219428



Western blot validation of overexpression lysate (Cat# [LY420688]) using anti-DDK antibody (Cat# [TA50011-100]). Left: Cell lysates from untransfected HEK293T cells; Right: Cell lysates from HEK293T cells transfected with RC219428 using transfection reagent MegaTran 2.0 (Cat# [TT210002]).