

Product datasheet for RC219427

C12orf42 (NM_198521) Human Tagged ORF Clone

Product data:

Product Type:	Expression Plasmids
Product Name:	C12orf42 (NM_198521) Human Tagged ORF Clone
Tag:	Myc-DDK
Symbol:	C12orf42
Mammalian Cell Selection:	Neomycin
Vector:	pCMV6-Entry (PS100001)
E. coli Selection:	Kanamycin (25 ug/mL)
ORF Nucleotide Sequence:	>RC219427 ORF sequence Red=Cloning site Blue=ORF Green=Tags(s)

TTTTGTAATACGACTCACTATAGGGCGGCCGGAATTCGTCGACTGGATCCGGTACCGAGGAGATCTGCCGCCGCGATCGCC

ATGTCTACAGTGATATGTATGAAACAAAGGGACGAAGAATTCCTGCTAACCATCAGACCTTTTGCAAACA
GGATGCAGAAATCCCCTTGCTATATCCCATTTGTGAGCAGTGCCACCCTGTGGGATAGAAGCACACCCAG
TGCAAAGCACATCCCTTGTTATGAAAGAAGTTCAGTACCCTGCTCCAGATTCATTAATCACATGAAGAAT
TTCTCTGAATCTCCTAAATTTTCGTAGTCTACACTTTCTGAATTTCCAGTATTTCCAGAAAGGACTCAA
ATTCAATGGCGTGTAAAAGACTACTTCATACTTGCCAGTACATAGTCCCAGGTGTTCTGTAAGCACAGT
TTCTTTTGATGAAGAAAGCTATGAAGAATTCGGTTCCTCTCCAGCACCATCCAGTAAAAGTATGAGGCC
CCATTGATTTTTACTGCCAGAGGAGAACTGAGGAGAGAGCCAGAGGAGCACCCAAGCAGGCTTGGAACA
GTTCAATTTTGAACAACTGGTTAAAAAGCCTAACTGGGCACACTCAGTAAATCCTGTTACCTGGAGGC
TCAGGGCATAACATCAGTAGACACACAAGACCTAAGGGCCAGCCCTTGAGCAGTCCCAAGAAAAATTCT
GGTTCTGCCGCCAGACCTTCCACTGCCATCGGCCCTGTCAGGAGGAGCCAGACGCCCGGCGCTCTGCAGA
GCACCGGCCCGAGTAACACAGAGCTCGAGCCGGAGGAGGATGGCAGTCCCAGCAGGCGCTCAGGCACA
CCCCGACGACATCAAAGCAGACTCCTGGGCGCGTCCGGAATCCCGTCGAAAAGGCGCGGTTGCCATG
GCGCCGAGATGCTCCCCAAGCATCCTCATACCCCGGGACAGGAGGCCTCAGGCGGACACCTCCCTCC
ATGGCAATCTGGCAGGAGCGCCCTTCCCTGCTGGCCGGTGCTTCCACCATTTGCCCTCAAGAGGTT
AATAAAGGTTTGCTCCTCAGCACCCCCCGCCCAACCCGGCGTTTCCATACGGTTTGTTACAGGCCCTT
TCTAGGCCGGTGGTGAATGCTCACTTACAT

ACGCGTACGCGGCCGCTCGAGCAGAAACTCATCTCAGAAGAGGATCTGGCAGCAAATGATATCCTGGATT
ACAAGGATGACGACGATAAGGTTTAA



Protein Sequence: >RC219427 protein sequence
Red=Cloning site Green=Tags(s)

MSTVICMKQRDEEFLLTIRPFANRMQKSPCYIPIVSSATLWDRSTPSAKHIPCYERTSVPCSRFINHMKN
 FSESPKFRSLHFLNFPVFPERTQNSMACKRLLHTCQYIVPRCSVSTVSVFDEESYEEFRSSPAPSSSETDEA
 PLIFTARGETEERARGAPKQAWNSFLEQLVKKPNWAHSVNPVHLEAQGIHISRHTRPKGQPLSSPKKNS
 GSAARPSTAIGLCRRSQTPGALQSTGPSNTELEPEERMAVPAGAQAHPDDIQSRLLGASGNPVGKAVAM
 APEMLPKHPHTPRDRRPQADTSLHGNLAGAPLPLLAGASTHFPKRLIKVCSAPPRPTRRFHTVCSQAL
 SRPVVNAHLH

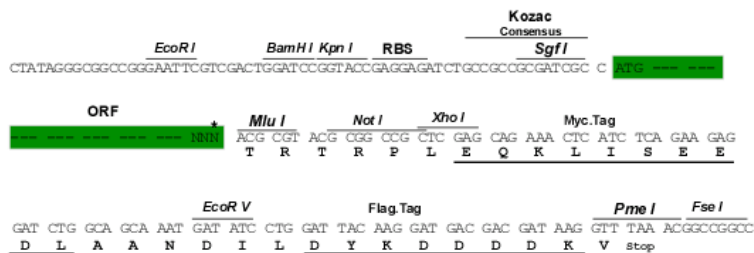
TRTRPLEQKLISEEDLAANDILDYKDDDDKV

Chromatograms: https://cdn.origene.com/chromatograms/mk6603_d09.zip

Restriction Sites: SgfI-MluI

Cloning Scheme:

Cloning sites used for ORF Shuttling:



* The last codon before the Stop codon of the ORF

ACCN: NM_198521

ORF Size: 1080 bp

OTI Disclaimer: The molecular sequence of this clone aligns with the gene accession number as a point of reference only. However, individual transcript sequences of the same gene can differ through naturally occurring variations (e.g. polymorphisms), each with its own valid existence. This clone is substantially in agreement with the reference, but a complete review of all prevailing variants is recommended prior to use. [More info](#)

OTI Annotation: This clone was engineered to express the complete ORF with an expression tag. Expression varies depending on the nature of the gene.

Components: The ORF clone is ion-exchange column purified and shipped in a 2D barcoded Matrix tube containing 10ug of transfection-ready, dried plasmid DNA (reconstitute with 100 ul of water).

Reconstitution Method:

1. Centrifuge at 5,000xg for 5min.
2. Carefully open the tube and add 100ul of sterile water to dissolve the DNA.
3. Close the tube and incubate for 10 minutes at room temperature.
4. Briefly vortex the tube and then do a quick spin (less than 5000xg) to concentrate the liquid at the bottom.
5. Store the suspended plasmid at -20°C. The DNA is stable for at least one year from date of shipping when stored at -20°C.

RefSeq: [NM_198521.1](#), [NP_940923.1](#)

RefSeq Size: 1391 bp

RefSeq ORF: 1083 bp

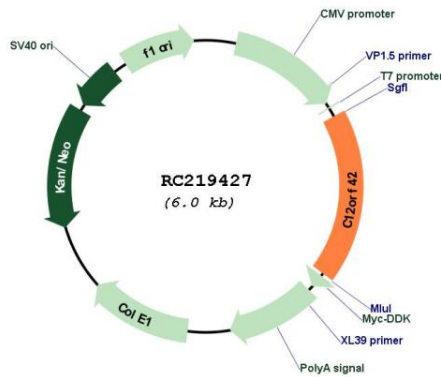
Locus ID: 374470

UniProt ID: [Q96LP6](#)

Cytogenetics: 12q23.2-q23.3

MW: 39.7 kDa

Product images:



Circular map for RC219427