

Product datasheet for RC219426

FOXD4L2 (FOXD4L3) (NM_199135) Human Tagged ORF Clone

Product data:

| | |
|---------------------------|---|
| Product Type: | Expression Plasmids |
| Product Name: | FOXD4L2 (FOXD4L3) (NM_199135) Human Tagged ORF Clone |
| Tag: | Myc-DDK |
| Symbol: | FOXD4L2 |
| Synonyms: | FOXD4B; FOXD4L2; FOXD4L4; FOXD6 |
| Mammalian Cell Selection: | Neomycin |
| Vector: | pCMV6-Entry (PS100001) |
| E. coli Selection: | Kanamycin (25 ug/mL) |
| ORF Nucleotide Sequence: | >RC219426 ORF sequence Red=Cloning site Blue=ORF Green=Tags(s) |

TTTTGTAATACGACTCACTATAGGGCGGCCGGAATTCGTCGACTGGATCCGGTACCGAGGAGATCTGCC
GCC**CGATCGCC**

ATGAACCTGCCAAGAGCTGAGCGCCTTCGCTCCACACCGCAGCGCAGCCTCCGGGACTCCGATGGGGAAG
ACGGTAAAATCGATGTCTGGGAGAGGAGGAAGATGAAGACGAGGTGGAAGACGAGGAGGAGCGCGAG
CCAGCAGTTCTAGAGCAGTCGCTCCAGCCGGGCTGCAGGTGGCCCGTGGGGCGGGTTCGCTTCCC
CGAGAGCACATCGAGGGCGCGCGGCCGAGCGACCCCTCAGAGTTTGGCACCAAGTTCAGGGCACCGC
CAAGGTCTGCGGGCCCTCTGAAGATGCCCGCAGCCGCAAGCCCCCTACTCGTACATCGCGCTCAT
CACCATGGCCATCCTGCAAAACCCGCACAAGCGCCTCACGCTCAGCGGCATCTGCGCCTTATTAGTGGC
CGTTCCTCCCTACTACCGCCGCAAGTTCCCCGCCTGGCAGAACAGCATCCGCCACAACCTCTCGTGAACG
ACTGCTTCGTTAAGATCCCCCGGAGCCGGGCCACCCAGGCAAGGGCAACTACTGGAGCCTGGACCCCGC
CTCCCAAGACATGTTGACAATGGCAGCTTTCTCCGGCGTAGGAAGCGTTTCAAGCGCCACCAACTGACC
CCGGGAGCCACCTGCCCAACCCCTTCCCTCTACCTGTGCACACGCCGCCCTGCACAACCCCAACCCAG
GCCCTCTGCTTGGGGCCCTGCCCGCCGAGCCAGTCCCGGGGCTACCCCAACACCGCCCCGGGAG
ACGCCCTTACGCTCTGCTGCACCCGCATCTCTTCGCTACCTACTGCTCTCGGCCCGTCTATGCCGGG
GCACCGAAGAAAGCAGAAGGCGCGCCCTGGCGACCCCGCACCCTTCCCGTGTGCAGCCCTCACTTGG
TCCTCAGCCTTGGGAGGAGGGCAAGGGTCTGGCGTCGCCACCGGAGGCGGATGCATCTCTTTAGCATT
GAGAGTATTATGAAGGGGTGAGGGGAGCGGTACAGGGGCTGCCGAGAGTTTGTCCCGACCGCGTGGA
GCTACTGCCACCTGCTCCAGCGACCATCAAGCCTGTTGCATCCCCAGACCGCTGCCCTTTGCTGCAAGT
GTCCGCCCGCCGCTGCTCGGACAATTTTGCAGCAATAGCAGCAGCATCAGGAGGAGGACTGCGCAAC
GGCTGCGCTCCCACCAAGGGCGCGGTGCTGGCGGGCACCTGTCGGCCTCGTCGGCGCTGCTG

ACGGTACGGCGCCGCTCGAGCAGAACTCATCTCAGAAGAGGATCTGGCAGCAATGATATCTGGATT
ACAAGGATGACGACGATAAGGTTTAA



[View online »](#)

Protein Sequence: >RC219426 protein sequence
Red=Cloning site Green=Tags(s)

MNLPRERLRSTPQRSLRDSGDGDKIDVLGEEDEDEVEDEEEAASQQFLEQSLQPLQVARWGGVALP
 REHIEGGGSPDPSEFGTKFRAPPRSAASEDARQPAKPPYSYIALITMAILQNPBKRLTLSGICAFISG
 RFPYYRRKFPWQNSIRHNLSLNDCFVKIPREPGHPGKGNYSWLDPASQDMFDNGSFLRRRKRFRHQLT
 PGAHLPHFPFLPAAHAALHNHPHPGPLLGAAPPQVPVPGAYPNTAPGRRPYALLHPHPLRYLLLSAPVYAG
 APKKAEGAALATPAPFPCCSPHLVLSLGRRARVWRRHREADASLSALRVLCCKGSGERVQGLRRVCPRRPG
 ATATCSSDHQACCIPRPLPLCCKCPPPPLLQGFCSNSSSIRRRTAPTAALPPRARCWAGTCRPRRRC

TRTRPLEQKLISEEDLAANDILDYKDDDDKV

Chromatograms: https://cdn.origene.com/chromatograms/mk6602_g04.zip

Restriction Sites: SgfI-MluI

Cloning Scheme:



* The last codon before the Stop codon of the ORF

ACCN: NM_199135

ORF Size: 1253 bp

OTI Disclaimer: The molecular sequence of this clone aligns with the gene accession number as a point of reference only. However, individual transcript sequences of the same gene can differ through naturally occurring variations (e.g. polymorphisms), each with its own valid existence. This clone is substantially in agreement with the reference, but a complete review of all prevailing variants is recommended prior to use. [More info](#)

OTI Annotation: This clone was engineered to express the complete ORF with an expression tag. Expression varies depending on the nature of the gene.

Components: The ORF clone is ion-exchange column purified and shipped in a 2D barcoded Matrix tube containing 10ug of transfection-ready, dried plasmid DNA (reconstitute with 100 ul of water).

- Reconstitution Method:**
1. Centrifuge at 5,000xg for 5min.
 2. Carefully open the tube and add 100ul of sterile water to dissolve the DNA.
 3. Close the tube and incubate for 10 minutes at room temperature.
 4. Briefly vortex the tube and then do a quick spin (less than 5000xg) to concentrate the liquid at the bottom.
 5. Store the suspended plasmid at -20°C. The DNA is stable for at least one year from date of shipping when stored at -20°C.

RefSeq: [NM_199135.4](#), [NP_954586.4](#)

RefSeq Size: 2218 bp

RefSeq ORF: 1254 bp

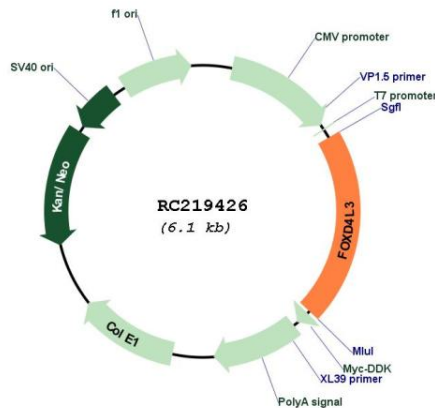
Locus ID: 286380

UniProt ID: [Q6VB84](#)

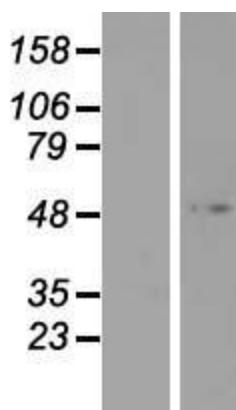
Cytogenetics: 9q21.11

MW: 45.8 kDa

Product images:



Circular map for RC219426



Western blot validation of overexpression lysate (Cat# [LY404747]) using anti-DDK antibody (Cat# [TA50011-100]). Left: Cell lysates from untransfected HEK293T cells; Right: Cell lysates from HEK293T cells transfected with RC219426 using transfection reagent MegaTran 2.0 (Cat# [TT210002]).