

Product datasheet for RC219420

CENPN (NM_001100625) Human Tagged ORF Clone

Product data:

Product Type:	Expression Plasmids
Product Name:	CENPN (NM_001100625) Human Tagged ORF Clone
Tag:	Myc-DDK
Symbol:	CENPN
Synonyms:	BM039; C16orf60; CENP-N; ICEN32
Mammalian Cell Selection:	Neomycin
Vector:	pCMV6-Entry (PS100001)
E. coli Selection:	Kanamycin (25 ug/mL)
ORF Nucleotide Sequence:	>RC219420 representing NM_001100625 Red=Cloning site Blue=ORF Green=Tags(s)

TTTTGTAATACGACTCACTATAGGGCGCCGGGAATTCGTCGACTGGATCCGGTACCGAGGAGATCTGCC
GCC**CGATCGC**C

ATGGATGAGACTGTTGCTGAGTTCATCAAGAGGACCATCTTGAAAATCCCCATGAATGAACTGACAACAA
TCCTGAAGGCCTGGGATTTTTGTCTGAAAATCAACTGCAGACTGTAATTTCCGACAGAGAAAGGAATC
TGTAGTTCAGCACTTGATCCATCTGTGTGAGGAAAAGCGTGCAAGTATCAGTGATGCTGCCCTGTTAGAC
ATCATTATATGCAATTCATCAGCACCAGAAAAGTTGGGATGTTTTTCAGATGAGTAAAGGACCAGGTG
AAGATGTTGACCTTTTTGATATGAAACAATTTAAAAATTCGTTCAAGAAAATTCCTCAGAGAGCATTAAA
AAATGTGACAGTCAGCTCAGAGAACTGAGGAGAATGCAGTCTGGATTCGAATTGCCTGGGAACACAG
TACACAAAGCCAAACAGTACAAACCTACCTACGTGGTGTACTACTCCCAGACTCCGTACGCCCTTACGT
CCTCCTCCATGCTGAGGCGCAATACACCCTTCTGGGTGAGGCGCTGACAATTGCTAGCAAAACCATCA
GATTGTGAAAAATGGACCTGAGAAGTCGGTATCTGGACTCTCTTAAGGCTATTGTTTTAAACAGTATAAT
CAGACCTTTGAACTCACAACCTACGACACCTCTACAGGAAAGAAGCCTTGGACTAGATATAAATATGG
ATCAAGGATCATTATGAAAACATAGTAGAAAAAGAGAGAGTCCAACGAATAACTCAAGAAACATTTGG
AGATTATCCTCAACCACAACCTAGAATTTGCACAATATAAGCTTGAACGAAATTCAAAAGTGTTTTAAAT
GGGAGCATCTTGGCTGAGAGGGAAGAACCCTCCGATGCCTAATAAAGTCTCTAGCCCATCTCTGG
AAGCATTGAAATCCTTAGCACCAGCGCACTTGTTCGAGGATCCAAAAGCTGCTCTGCTATTCTGGAAAG
CCACAGTCAAGGGACCCAGGACCCGAGCAGCTGGCAGAAGGACTGTACCTTCTGTTGTCCCATTGTAT
CCAAGATGT

ACGCGTACGCGGCCGCTCGAGCAGAACTCATCTCAGAAGAGGATCTGGCAGCAATGATATCCTGGATT
ACAAGGATGACGACGATAAGGTTTAA



[View online »](#)

Protein Sequence: >RC219420 representing NM_001100625
Red=Cloning site Green=Tags(s)

MDETVAEFIKRTILKIPMNELTTILKAWDFLSENQLQTVNFRQRKESVVQHLIHLCEEKRASISDAALLD
 I IYMQFHQHQKVDVVFQMSKGPGEVDLFDKQFKNSFKKILQRALKNVTVSFRETEENAVWIRIAWGTO
 YTKPNQYKPTYVVVYSQTPYAFTSSSMLRRNTPLLQALTIASKHHQIVKMDLRSRYLDSLKAIVFKQYN
 QTFETHNSTTLPQERSLGLDINMDSRIIHENIVEKERVQRITQETF GDYPQPQLEFAQYKLETKFKSGLN
 GSI LAEREEPLRCLIKFSSPHLLEALKSLAPAALVCRIQKLLCYSGSHSQGTQDPSSWQKDLYLFLVPLY
 PRC

TRTRPLEQKLISEEDLAANDILDYKDDDDKV

Chromatograms: https://cdn.origene.com/chromatograms/mk8054_d08.zip

Restriction Sites: SgfI-MluI

Cloning Scheme:



* The last codon before the Stop codon of the ORF

ACCN: NM_001100625

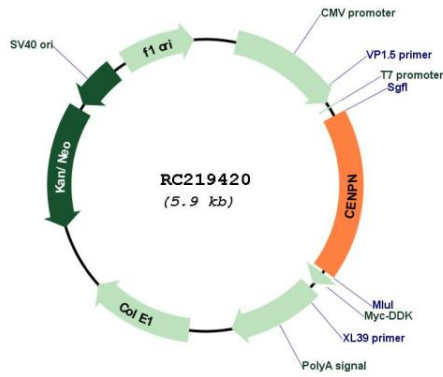
ORF Size: 1059 bp

OTI Disclaimer: Due to the inherent nature of this plasmid, standard methods to replicate additional amounts of DNA in E. coli are highly likely to result in mutations and/or rearrangements. Therefore, OriGene does not guarantee the capability to replicate this plasmid DNA. Additional amounts of DNA can be purchased from OriGene with batch-specific, full-sequence verification at a reduced cost. Please contact our customer care team at custsupport@origene.com or by calling 301.340.3188 option 3 for pricing and delivery.

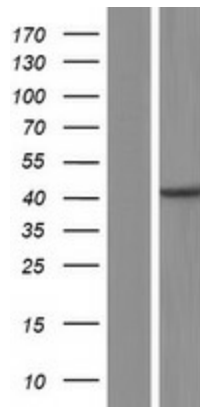
The molecular sequence of this clone aligns with the gene accession number as a point of reference only. However, individual transcript sequences of the same gene can differ through naturally occurring variations (e.g. polymorphisms), each with its own valid existence. This clone is substantially in agreement with the reference, but a complete review of all prevailing variants is recommended prior to use. [More info](#)

OTI Annotation:	This clone was engineered to express the complete ORF with an expression tag. Expression varies depending on the nature of the gene.
Components:	The ORF clone is ion-exchange column purified and shipped in a 2D barcoded Matrix tube containing 10ug of transfection-ready, dried plasmid DNA (reconstitute with 100 ul of water).
Reconstitution Method:	<ol style="list-style-type: none">1. Centrifuge at 5,000xg for 5min.2. Carefully open the tube and add 100ul of sterile water to dissolve the DNA.3. Close the tube and incubate for 10 minutes at room temperature.4. Briefly vortex the tube and then do a quick spin (less than 5000xg) to concentrate the liquid at the bottom.5. Store the suspended plasmid at -20°C. The DNA is stable for at least one year from date of shipping when stored at -20°C.
RefSeq:	NM_001100625.1 , NP_001094095.1
RefSeq Size:	2265 bp
RefSeq ORF:	1062 bp
Locus ID:	55839
UniProt ID:	Q96H22
Cytogenetics:	16q23.2
Protein Families:	Druggable Genome
MW:	41 kDa
Gene Summary:	The protein encoded by this gene forms part of the nucleosome-associated complex and is important for kinetochore assembly. It is bound to kinetochores during S phase and G2 and recruits other proteins to the centromere. Pseudogenes of this gene are located on chromosome 2. Alternative splicing results in multiple transcript variants that encode different protein isoforms. [provided by RefSeq, Jul 2012]

Product images:



Circular map for RC219420



Western blot validation of overexpression lysate (Cat# [LY420287]) using anti-DDK antibody (Cat# [TA50011-100]). Left: Cell lysates from untransfected HEK293T cells; Right: Cell lysates from HEK293T cells transfected with RC219420 using transfection reagent MegaTran 2.0 (Cat# [TT210002]).