

## Product datasheet for **RC219419**

### GREB1 (NM\_014668) Human Tagged ORF Clone

#### Product data:

Product Type:	Expression Plasmids
Product Name:	GREB1 (NM_014668) Human Tagged ORF Clone
Tag:	Myc-DDK
Symbol:	GREB1
Mammalian Cell Selection:	Neomycin
Vector:	pCMV6-Entry (PS100001)
E. coli Selection:	Kanamycin (25 ug/mL)
ORF Nucleotide Sequence:	>RC219419 representing NM_014668 Red=Cloning site Blue=ORF Green=Tags(s)

TTTTGTAATACGACTCACTATAGGGCGGCCGGAATTCGTCGACTGGATCCGGTACCGAGGAGATCTGCC  
GCC**CGATCGCC**

ATGGGAAATCTTACGCTGGACAGCTGAAGACGACACGCTTTGAAGAGGTCTTGACAATCCATCGAGG  
CATCCCTGCGGTCCAACAACCTGGTGCCAGGCCCATCTTTCCAGCTGTACCTGGAAGCTGAGCAGCA  
GCTTGGCGCTCTAGAAGGTGGTAGCCGAGTGGACAATGAGGAAGAGGAAGAAGAGGGAGAAGGAGGGCTG  
GAAACAAATGGCCCCCAACCCCTTTCCAGCTGCACCCCTGCCTGAAGGATGCTGTACCAAGGAGGGT  
TTTGCCAGGCCGGAAGGACCTGCGCCTGTCTCCATTCCAACGAGCCCATGGATGCTCCCTGCGGGCTT  
TCTCCTCGTGGGGTCAAGTCCCCAGCCTGCCGACCATCTCCTGGTGTGCGCCGTTGACAAGAGGTTT  
TTGCCAGATGACAATGGCCACAATGCTCTTCTGGTTTCTCTGGGAATTGTGTTGGCTGTGAAAGAAAG  
GCTTCTGTACTTCACGGAATTCTCCAATCATATAAACTGAAACTGACCACTCAACCAAGAAGCAGAA  
ACACTTGAAGTATTACCTGGTCCGTAATGCACAAGGGACTCTAACCAAGGACCTTTAATCTGTTGGAAA  
GGCTCAGAGTTTAGAAGCCGGCAGATCCCCGCCAGTACTGTTCCAGTTCCTCTTCCAGCCCTGGAGA  
GCACGGCTGCCTCCCCAGCGAGCCGTTCTGGGACGAACCCAGCATCCTGATGGGAGCTCAGCAGGC  
AGGACCAGCTTCTGATCACCCCTCACTAAACGCAGCAATGGGTCCGGCTGTTTTCAACGGCAAAGATTCC  
CCGAAGTGCCAACTGGCAAAGAATAACCTGTTGGCCCTGCCGACCATCGGCTTTAGGTATCTTGT  
CAAACCTCCGGGCCCCCAAAAAACGCCACAAGGGTGGTCTCCAGAATCTCCATCAGCTCCAGATGGTGG  
CTGCCCTCAAGGTGGTGGGAACAGAGCTAAGTATGAGAGCGCAGGCATGTCTGCGTGCCGAGGTTGGC  
TTGGTGGGACCAGCTTACGTACCTTTCCAGTGGTGGCCTCTGGAGAACCAGTGTCTGTTCTGACAAC  
TGCTGAAAATATGCAAGGCCAAGCCAGTGATATTTAAAGGCCATGGGAACCTCCCTTACCTCTGTGGAA  
CCTGAATGACGTCGTGGTCCAGCCCCCTCTGTACACGTGCTACCAGAATCCAGTCTGTCTCACGGCA  
TACGAGCAGTACGGCGCCTCTGCCATCCAGCCCATCTCCGAGGAGATGCAGCTCCTGCTTACCGTCTACT  
ACCTGGTCCAGCTGGCCGCGGACCAGGTGCCCTTGATGGAGGACCTGGAGCAGATCTTCCGCGCTTTG  
GCGCGAGTCGCACCTGACCGAGATCCGGCAGTACCAGAGGCGCCGCCAGCCCTCCCGCCCGCCG  
AGCGCCGCGCACCCGTGACCTCCGCGCAGCTGCCCTGGCTGGCCAGCCTGGCCGCGCAGCTCTGCAACG  
ACAGCGTGCACGTCATCGAGTGTCTTACTCCCTGGCCGAGGGCCTCTCCGAGATGTTCCGGCTGTTGGT



[View online >](#)

CGAGGGCAAGCTTGCCAAGACCAACTACGTGGTCATCATCTGCGCCTGCCGCAGCGCGGCATCGACTCC  
 TGCATCGCCGTCACCGGAAAATACCAAGCCCGGATTCTTTCCGAGAGCCTTCTACTCTGCGGAGTACC  
 AGAAGGAAGTCAATTACGAGCTGGTTACGGGGAAGGTAGACTCGCTGGGGCCTTCTTTAGCACCCCTCTG  
 TCCAGAGGGTGACATTGACATTTTGTGGACAAATTTACCAGGAAAATCAAGGCCATATTTCTTCTCA  
 CTCGCTGCCTCTTCTGTCACTAAAGCAGCATCCCTGGATGTCAGTGGGACACCGGTGTGCACAAGTTACA  
 ATCTGGAGCCACACAGCATCCGGCCCTCCAGCTGGCAGTAGCGCAGAAGCTCCTCTCCCATTGTGTTC  
 CATTGGGATCCAGCACCCAAAATCTGGACCTGGGATCCTTTGAGAAGGTGGACTTTCTCATTGGCATT  
 CCCCCCTCAGAAGTGACCTACCAGCAGACTCTGCTCCAYGTGTGGCATTAGGGGTTTTGCTGGAGCTTG  
 GTCTGAAGAAAAGAGCACATGACGAAGCAGAGGGTGAACAGTATGTTCTGAAGCTAGACACGGAGGCACA  
 GACAAAATTTAAGGCTTTTCTGCAAACTCCTTCCAGAACC CGCATACACTTTTTGTCTAATCCATGAC  
 CATGCGCACTGGGATCTTGTGAGTAGCACTGTTTATAACCTCTATTCTCAAAGTGACCCGTCGGTGGGAT  
 TGGTGGACCGATTGCTCAACTGCAGGGAGGTGAAGGAGGCCCAACATTGTGACACTTCACGTGACCTC  
 CTTCCCGTATGCACTGCAGACACAGCACACCCTCATCAGCCCTACAACGAGATCCACTGGCCTGCCTCC  
 TGCAGTAATGGAGTGGACTTATATCATGAAAATAAGAAGTACTTCGGGCTGTGGAGTTTATTGAATCCA  
 CCCTTTCAGGACACAGCCTCCCCTTGTCTAGATACGATAGCTCCTTTGAGCCATGGTCACTGCATTAGG  
 AAAAAGGTTCCCGCCCTGCACAGCGCGGTGATCAGGACCTTTGTTCTCGTGCAGCACTACGCGGCCGCC  
 CTGATGGCCGTAAGCGGCTCCCGCAGATGAAGAACTACACGTCCGTGGAGACGCTGGAGATCACGCAGA  
 ACCTCCTCAACTCCCGAAGCAGTGCCCTGCGGCCACGGGCTCATGGTCTGCTGCGGGTGCCCTGTT  
 GCCCTGGCGGTGGTGGCCTATGAGCGGCTGGCCACGTGCGGGCCCGGCTGGCGCTGGAGGAGCACTTT  
 GAGATCATCTGGGCAGTCCCAGCTCAGGCGTACCCGTGGGGAAGCACTTCGTAAGCAGCTCAGGATGT  
 GGCAGAAAATCGAGGATGTGGAGTGGAGACCCAGACTTACTTGGAGCTGGAGGGTCTGCCTTGCATCCT  
 GATCTTCAGTGGGATGGACCCGCATGGGAGTCTTGGCAGGCTTTGAGGACTGTGACCTCGGATTG  
 ATAACTCCTCCTGCTTGGTGGAAACAGCTTGGAGCAGGAGCTGGCCCTGGCTGCCTACTTTGTAAAGCA  
 ACGAGGTTCCCTTGGAGAAGGGGCTAGGAACGAGGCCTTGGAGAGTGATGCTGAGAAGCTGAGCAGCAC  
 AGACAACGAGGATGAGGAGCTGGGACAGAAGGCTCTACCTCGGAGAAGAGAAGCCCATGAAAAGGGAG  
 AGGTCCCCTCCACGACTCAGCATCCTCATCCCTCTCCTCCAAGGCTTCCGGTTCAGCGCTCGGTGGCG  
 AGTCTCGGCTCAGCCCACAGCACTCCCCAGGGAGAGCATGCCAGGTGCGCCCAGCCCCGTGGCCCCGC  
 AGAGGAGGGCAGAGCCCCGTTGAGAAACAGAGGCCCGGGCAAGTCAAGGGCCACCCTCGGCCATCAGC  
 AGGCACAGTCCCGGGCCAGCCCCAGCCGACTGTAGCCTCAGGACCGCCAGAGGAGCGTCCAGGTGT  
 CGGTACCTCGTGTGCTCCAGCTGTCTCCTCCTCGGGCTCATCTCCTCATCCGTGGCGCCCGTGC  
 CGGCACGTGGGTCTGCAGGCCTCCAGTGTCTTGGACCAAGGCTGCCGCCAGCCACCATTGTCTTC  
 TTGCCAAGCTCGTGTAGGACATGGTTGTGTCCACTGACAGCAGTGGCCTGCCAAGGCCCTCCCTCC  
 TGCCCTCCCCCTCGGTGATGTGGGCCAGCTCTTCCGCCCTGCTCAGCAAGACCATGACATCCACCGA  
 GCAGTCCCTCTACTACGGCAGTGGACGGTGCCCCGGCCAGCCACATGGACTACGGCAACCGGGCCGAG  
 GGCCGCGTGGACGGCTTCCACCCCGCAGGCTGTGCTCAGCGGCCCTCAGATCGGGAAGACAGGTG  
 CCTACCTGCAGTTCCTCAGTGTCTGTCCAGGATGCTTGTTCGGCTCACAGAAGTGGATGTCTATGACGA  
 GGAGGAGATCAATATCAACCTCAGAGAAGAATCTGACTGGCATTATCTCCAGCTTAGCGACCCCTGGCCA  
 GACCTGGAGCTGTTCAAGAAGTTGCCCTTGGACTACATCATTACGACCCGAAGTATGAAGATGCCAGCC  
 TGATTTGTTGCACTATCAGGGTATAAAGAGTGAAGACAGAGGGATGTCCCGAAGCCGGAGGACCTTTA  
 TGTGCGGCGTCAGACGGCACGGATGAGACTGTCCAAGTACGCAGCGTACAACACTTACCACCACTGTGAG  
 CAGTGCCACCAAGTACATGGGCTTCCACCCCGCTACCAGCTGTATGAGTCCACCCTGCACGCTTTGCCT  
 TCTCTTACTCCATGCTAGGAGAGGAGATCCAGCTGCACCTCATCATCCCCAAGTCCAAGGAGCACCCTT  
 TGTCTTACGCCAACCTGGAGGCCAGCTGGAGAGCATGCGACTACCCTCGTGACAGACAAGGCCATGAA  
 TATATAAAAAGTCCGACATTCACCTCAACCACCGCCGTCACGAACATGGGCTCTTTAATCTGTACCAG  
 CAATGGACGGTCCAGCCATTTGCAGTGTGGTTGTCAAGGAATACGAGATGGCAATTTATAAGAAATA  
 TTGGCCCAACCACATCATGCTGGTGTCCCGAGTATCTTCAACAGTGTGGAGTTGGTGTGCTCATTTT  
 CTCATCAAGGAGCTGCTTACCATAACCTGGAGCTCGAGCGGAACCGGCAGGAGGAGCTGGGAATCAAGC  
 CGCAGGACATCTGGCCTTTCATTGTGATCTCTGATGACTCTGCGTGTGTTGGAACGTGGTGGATGTCAA  
 CTCTGCTGGGGAGAGAAGCAGGGAGTTCTCCTGGTGGAAAGGAACGTGTCTTTGAGACACATCATGCA  
 CACATCGAGGGCGGCCCGACATCATGCACTACGCCCTGCTGGGCTGCGGAAGTGGTCCAGCAAGACCC  
 GGGCCAGCGAGGTGCAAGAGCCCTTCCCGCTGCCACGTGCACAACCTCATCATCTGAACGTGGACCT  
 GACCCAGAACGTGCAAGTACAACCAGAACCAGGTTCTGTGTGACGATGTAGACTTCAACCTGCGGGTGCAC

AGCGCCGGCCTCCTGCTCTGCCGGTTCAACCGCTTCAGCGTGATGAAGAAGCAGATCGTGGTGGCGGCC  
 ACAGGTCCTTCCACATCACATCCAAGGTGTCTGATAACTCTGCCCGGTCGTGCCGGCCAGTACATCTG  
 TGCCCCGGACAGCAAGCACACGTTCTCGCAGCGCCCGCCAGCTCCTGCTGGAGAAGTTCTGCAGCAC  
 CACAGCCACCTCTTCTCCCGCTGTCCCTGAAGAACCATGACCACCCAGTGTCTGTCTGCGACTGTTACC  
 TGAACCTGGGATCTCAGATTTCTGTTTGTATGTGAGCTCCAGGCCCACTCTTTAAACATCAGTGTCT  
 GGACTTGTCTCAGTGGGCTGCTGTACTCTGTGACTCTTTTGTGGAGCTAGCTTTTTGAAAAAG  
 TTTCTGAAAGGTGCGACGTTGTGTCTGTCTGATCTGTGAGTCCAGGCCGAGCTCACTGCCAGACGGTCCG  
 TCCGCCTGGAGCTCGAGGACGAGTGGCAGTTCGGCTGCCGATGAGTCCAGACCCCAATGCCAGGGA  
 AGACCGCCGCTCTTTTTCTGACGGGACGACACATC

ACGCGTACGCGCGCGCTCGAGCAGAACTCATCTCAGAAGAGGATCTGGCAGCAATGATATCCTGGATT  
 ACAAGGATGACGACGATAAGGTTTAA

**Protein Sequence:**

>RC219419 representing NM\_014668  
 Red=Cloning site Green=Tags(s)

MGNSYAGQLKTRFEVVLHNSIEASLRSNLVRPPIFSQLYLEAEQQLAALEGGSRVDNEEEEEEGEGL  
 ETNGPPTPFQLHPLPEGCCTTDGFCQAGKDLRLVSI SNEPMDVPAGFLLVGVKSPSLPDHLLVCAVDKRF  
 LPDDNGHNALLGFSGNCVCGKKGFCYFTEFSNHINLKLTTQPKKQKHLKYLV RNAQGT LTKGPLICWK  
 GSEFRSRQIPASTCSSLFPALESTAAFPSEPVPGTNPSILMGAQQAGPASDHPSLNAAMGPAVFNKDS  
 PKCQQLAKNNLLALPRPSALGILSNSGPPKRRHKGWSPESSAPDGGCPQGGNRAKYESAGMSCVPQVG  
 LVGPASVTFPVVASGEPVSVPDNLLKICKAKPVIKFGHGNFPYLCGNLNDVVVSPLLYTCYQNSQVSRA  
 YEQYGASAIQPISEEMQLLLTVYYLVQLAADQVPLMEDLEQIFLRSWRESHLTEIRQYQQAPPQFPFAP  
 SAAAPVTSACLWLASLAASSCNDVSVHIECAYSLAEGLESEMFRLLVEGKLAKTNYVVIICACRSAIDS  
 CIAVTGKYQARILSESLTPAEYQKEVNYELVTGKVDSLGAFFSTLCPEGDIDILLDKFHQENQGHIS  
 LAASSVTKAASLDVSGTPVCTSYNLEPHSIRPFQLAVAQKLLSHVCSIASSSTQNLDLGSFEKVDFLICI  
 PPSEVTYQQTLLXVHSGVLELGLKKEHMTKQVVEQYVLLKLDTEAQTQKFAFLQNSFQNPHTLFLVLIHD  
 HAHWDLVSSTVHNLYSQSDPSVGLVDRLLNCREVKEAPNIVTLHVTSFPYALQTQHTLISPYNEIHWPA  
 CSNGVDLYHENKKYFGLSEFIESTLSGHSPLLLRYDSSFEAMVTALGKRFPRLHSAVIRTVLVQHYAAA  
 LMAVSGLPQMKNYTSVETLEITQNLNSPKQCPCGHGLMVLRLVPCSP LAVVAYERLAHVRLALEEHF  
 EITLGPSSGVTVGKHFKQLRMWQKIEDVEWRPQTYLELEGLPCILIFSGMDPHGESLPRSLRYCDLRL  
 INSSCLVRTALEQELGLAAYFVSNEVPLEKGARNEALESDAEKLSSTDNEDEELGTGEGSTSEKRSPMKRE  
 RSRSHDSASSLSSKASGSALGGESSAQPTALPQGEHARSPPRGPAAEEGRAPGEKQRPRASQGGPPSAIS  
 RHSPGPTQPDCSLRTGQRSVQSVTSSCSQLSSSSGSSSSVAPAAGTWVLQASQCSLTKACRQPPIVF  
 LPKLVYDMVVSTDSGLPKAASLLPSPSVMWASSFRPLL SKTMTSTEQSLYRQWTVPRPSHMDYGNRAE  
 GRVDGFHPRRLLL SGPPQIGKTGAYLQFLSVLSRMLVRLTEVDVYDEEENINLREESDWHYLQLSDPWP  
 DLELFFKLPFDYI IHDPKYEDASLICSHEYQGIKSEDRGMSRKPEDLYVRRQTARMRLSKYAAAYNTYHHCE  
 QCHQYMGFHPRYQLYESTLHAFAFSYSMLGEEIQLHFIIPKSKEHHFVFSQPGGQLESMRLPLVTDKSHE  
 YIKSPTFTPTTGRHEGLFNLYHAMDGASHLHVLVVKKEYEMAIYKKYWPNHIMLVLPISIFNSAGVGAHF  
 LIKELSYHNLELERNRQEELGIKQDIWPFIVISDDSCVMWNVVDVNSAGERSREFSWSERNVSLKHIMQ  
 HIEAAPDIMHYALLGLRKWSSKTRASEVQEPFSRCHVHNFIIILNVDLTQNVQYNQNRFLCDDVDVFNLRVH  
 SAGLLL CRFNRF SVMKKQIVVGGHRSFHITSKVSDNSAAVVAQYICAPDSKHTFLAAPAQLLLEKFLQH  
 HSHLFFPLSLKNHDPVLSVDCYLNLSGSI SVCYVSSRPHSLNISCSDLLFSGLLLYL CDSFVGASFLKK  
 FHFLKGATLCVICQDRSSLRQTVVRLLELEDEWQFRLRDEFQTANAREDRPLFFLTGRHI

TRTRPLEQKLISEEDLAANDILDYKDDDDKV

**Restriction Sites:**

SgfI-MluI

**Cloning Scheme:**


**ACCN:** NM\_014668

**ORF Size:** 5847 bp

**OTI Disclaimer:** Due to the inherent nature of this plasmid, standard methods to replicate additional amounts of DNA in *E. coli* are highly likely to result in mutations and/or rearrangements. Therefore, OriGene does not guarantee the capability to replicate this plasmid DNA. Additional amounts of DNA can be purchased from OriGene with batch-specific, full-sequence verification at a reduced cost. Please contact our customer care team at [custsupport@origene.com](mailto:custsupport@origene.com) or by calling 301.340.3188 option 3 for pricing and delivery.

The molecular sequence of this clone aligns with the gene accession number as a point of reference only. However, individual transcript sequences of the same gene can differ through naturally occurring variations (e.g. polymorphisms), each with its own valid existence. This clone is substantially in agreement with the reference, but a complete review of all prevailing variants is recommended prior to use. [More info](#)

**OTI Annotation:** This clone was engineered to express the complete ORF with an expression tag. Expression varies depending on the nature of the gene.

**Components:** The ORF clone is ion-exchange column purified and shipped in a 2D barcoded Matrix tube containing 10ug of transfection-ready, dried plasmid DNA (reconstitute with 100 ul of water).

**Reconstitution Method:**

1. Centrifuge at 5,000xg for 5min.
2. Carefully open the tube and add 100ul of sterile water to dissolve the DNA.
3. Close the tube and incubate for 10 minutes at room temperature.
4. Briefly vortex the tube and then do a quick spin (less than 5000xg) to concentrate the liquid at the bottom.
5. Store the suspended plasmid at -20°C. The DNA is stable for at least one year from date of shipping when stored at -20°C.

**RefSeq:** [NM\\_014668.4](#)

**RefSeq Size:** 8482 bp

**RefSeq ORF:** 5850 bp

**Locus ID:** 9687

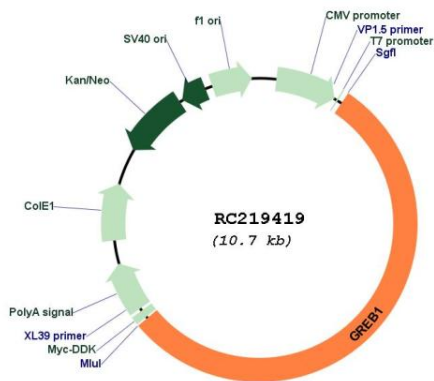
**UniProt ID:** [Q4ZG55](#)

**Cytogenetics:** 2p25.1

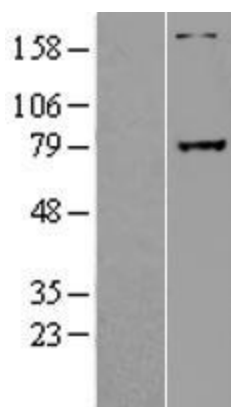
**MW:** 216.3 kDa

**Gene Summary:** This gene is an estrogen-responsive gene that is an early response gene in the estrogen receptor-regulated pathway. It is thought to play an important role in hormone-responsive tissues and cancer. Three alternatively spliced transcript variants encoding distinct isoforms have been found for this gene. [provided by RefSeq, Jul 2008]

### Product images:



Circular map for RC219419



Western blot validation of overexpression lysate (Cat# [LY415122]) using anti-DDK antibody (Cat# [TA50011-100]). Left: Cell lysates from untransfected HEK293T cells; Right: Cell lysates from HEK293T cells transfected with RC219419 using transfection reagent MegaTran 2.0 (Cat# [TT210002]).