

Product datasheet for RC219416

Osteocrin (OSTN) (NM_198184) Human Tagged ORF Clone

Product data:

Product Type: Expression Plasmids
Product Name: Osteocrin (OSTN) (NM_198184) Human Tagged ORF Clone
Tag: Myc-DDK
Symbol: Osteocrin
Synonyms: MUSCLIN
Mammalian Cell Selection: Neomycin
Vector: pCMV6-Entry (PS100001)
E. coli Selection: Kanamycin (25 ug/mL)
ORF Nucleotide Sequence: >RC219416 representing NM_198184
Red=Cloning site Blue=ORF Green=Tags(s)

TTTTGTAATACGACTCACTATAGGGCGGCCGGAATTCGTCGACTGGATCCGGTACCGAGGAGATCTGCC
GCC**CGGATCGCC**

ATGCTGGACTGGAGATTGGCAAGTGCACATTTTCATCCTGGCTGTGACTGACTGTGGAGCTCAGGAA
AAGTCCTCTCAGTAGATGTAACAACAACAGAGGCCTTTGATTCTGGAGTCATAGATGTGCAGTCAACACC
CACAGTCAGGGAAGAGAAATCAGCCACTGACCTGACAGCAAACCTTTGCTTCTTGATGAATTGGTGCC
CTAGAAAATGATGTGATTGAGACAAAGAAGAAAAGGAGTTTCTCTGGTTTGGGTCTCCCCTTGACAGAC
TCTCAGCTGGCTCTGTAGATCACAAAGGTAACAGAGGAAAGTAGTAGATCATCCAAAAGCGGATTTGG
TATCCCATGGATCGGATTGGTAGAAACCGGCTTCAAATTCAGAGGC

ACGCGTACGCGGCCGCTCGAGCAGAAACTCATCTCAGAAGAGGATCTGGCAGCAAATGATATCCTGGATT
ACAAGGATGACGACGATAAGGTTTAA

Protein Sequence: >RC219416 representing NM_198184
Red=Cloning site Green=Tags(s)

MLDWRLASAHFILAVTLTWSSGKVLSDVTTTEAFDSGVIDVQSTPTVREEKSATDLTAKLLLLDELVS
LENDVIETKKRSFSGFGSPLDRLSAGSVDHKGKQRKVVDHPKRRFGIPMDRIGRNRLSNSRG

TRTRPLEQKLISEEDLAANDILDYKDDDDKV

Chromatograms: https://cdn.origene.com/chromatograms/mk6102_a06.zip

Restriction Sites: Sgfl-Mlul



[View online »](#)

Cloning Scheme:


ACCN: NM_198184

ORF Size: 399 bp

OTI Disclaimer: The molecular sequence of this clone aligns with the gene accession number as a point of reference only. However, individual transcript sequences of the same gene can differ through naturally occurring variations (e.g. polymorphisms), each with its own valid existence. This clone is substantially in agreement with the reference, but a complete review of all prevailing variants is recommended prior to use. [More info](#)

OTI Annotation: This clone was engineered to express the complete ORF with an expression tag. Expression varies depending on the nature of the gene.

Components: The ORF clone is ion-exchange column purified and shipped in a 2D barcoded Matrix tube containing 10ug of transfection-ready, dried plasmid DNA (reconstitute with 100 ul of water).

Reconstitution Method:

1. Centrifuge at 5,000xg for 5min.
2. Carefully open the tube and add 100ul of sterile water to dissolve the DNA.
3. Close the tube and incubate for 10 minutes at room temperature.
4. Briefly vortex the tube and then do a quick spin (less than 5000xg) to concentrate the liquid at the bottom.
5. Store the suspended plasmid at -20°C. The DNA is stable for at least one year from date of shipping when stored at -20°C.

RefSeq: [NM_198184.2](#)

RefSeq Size: 402 bp

RefSeq ORF: 402 bp

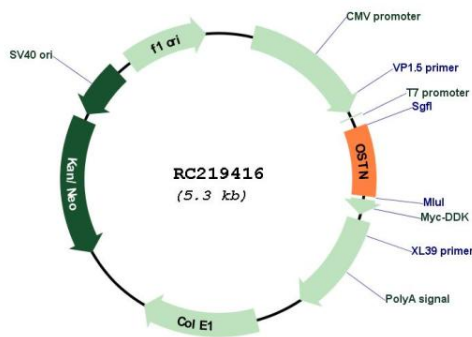
Locus ID: 344901

UniProt ID: [P61366](#)

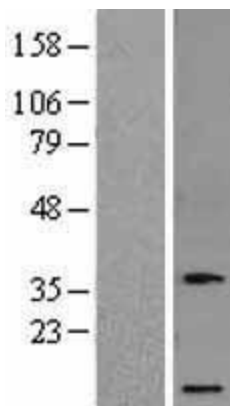
Cytogenetics: 3q28
Protein Families: ES Cell Differentiation/IPS, Secreted Protein
MW: 11.7 kDa

Gene Summary: Hormone that acts as a regulator of dendritic growth in the developing cerebral cortex in response to sensory experience (PubMed:27830782). Induced in the brain following membrane depolarization and inhibits dendritic branching in neurons of the developing cortex (PubMed:27830782). Probably acts by binding to natriuretic peptide receptor NPR3/NPR-C, thereby preventing binding between NPR3/NPR-C and natriuretic peptides, leading to increase cGMP production (By similarity).[UniProtKB/Swiss-Prot Function]

Product images:



Circular map for RC219416



Western blot validation of overexpression lysate (Cat# [LY403676]) using anti-DDK antibody (Cat# [TA50011-100]). Left: Cell lysates from untransfected HEK293T cells; Right: Cell lysates from HEK293T cells transfected with RC219416 using transfection reagent MegaTran 2.0 (Cat# [TT210002]).