

Product datasheet for RC219415

CD101 (NM_004258) Human Tagged ORF Clone

Product data:

Product Type:	Expression Plasmids
Product Name:	CD101 (NM_004258) Human Tagged ORF Clone
Tag:	Myc-DDK
Symbol:	CD101
Synonyms:	EWI-101; IGSF2; V7
Mammalian Cell Selection:	Neomycin
Vector:	pCMV6-Entry (PS100001)
E. coli Selection:	Kanamycin (25 ug/mL)
ORF Nucleotide Sequence:	>RC219415 representing NM_004258 Red=Cloning site Blue=ORF Green=Tags(s)

TTTTGTAATACGACTCACTATAGGGCGGCCGGAATTCGTCGACTGGATCCGGTACCGAGGAGATCTGCC
GCC**CGATCGCC**

ATGGCAGGCATCTCATATGTGGCATCTTTCTTTCTCCTTCTGACTAAGCTCAGCATTGGCCAGAGAGAAG
TAACAGTTCAGAAAGGACCCTGTTAGAGCTGAAGGTTACCCAGTCAGCATTGGCTGCAATGTAAGTGG
CCACCAGGGACCTTCTGAGCAGCATTCCAGTGGTCTGTTACCTGCCGACAAACCCGACCCAGGAAGTC
CAGATCATTAGCACCAAGGATGTGCCTTCTTACGCAGTATATACGCAGCGGGTGCAGGAGGAGACG
TCTACGTGGAGAGGGTCCAGGGCAACTCAGTCTTGTTCACATCTCAAACTCCAGATGAAGGATGCTGG
CGAGTATGAGTGTACACACCAAACACTGATGAGAAATACTATGGAAGTTACAGTGCAAAGACTAATCTA
ATTGTTATTCCAGATACCCTCTCTGCCACCATGAGTTCTCAGACTCTCGGTAAGGAGGAAGTGAGCCAT
TAGCCCTCACCTGTGAGGCATCCAAAGCCACAGCCCAACATACTCACCTCTCTGTACCTGGTACCTAAC
ACAGGATGGAGGAGGAAGCCAAGCCACTGAGATTATTTCTCTCTCAAAGATTTTATATTGGTCCCTGGG
CCCTTGTATACAGAGCGGTTTGCAGCCAGTGACGTACAGCTCAACAACTGGGACCCACTACATTCAGGC
TGTCATAGAGAGGCTCCAGTCTCAGATCAGGGTCTGTTCTGTGAGGCAACGGAATGGATTCAGGA
TCCAGATGAAACTTGGATGTTTCAACAAAAAGCAGACCGATCAAACACTCTGAGGATCCAGCCAGCA
GTGAAAGATTTTCAAGTCAACATTACAGCTGACAGCTTGTGCTGAAGGAAACCTTAGAAGTGGTTT
GCCTGGTTGTAAGCAGTGGCCGTGACCCACAGCTTCAAGGCATTTGGTTCTTCAATGGGACTGAAATTGC
TCACATTGATGCTGGTGGAGTCTGGGCCTGAAGAATGACTACAAAGAGAGAGCAAGTCAAGGAGAGCTC
CAGGTTTCAAAGTTAGGCCCAAGGCTTTCTCTCAAGATCTTCTCTGGGCCAGAGGATGAAGGCG
CCTACAGATGTGTGGTAGCAGAGGTCATGAAAACACGCACAGGTTCTGGCAGGTGCTTCAGAGAAAGCA
GTCACCAGACAGCCAGTGCACCTGAGGAAGCCAGCAGCAAGAAGTGTGGTCATGTCTACCAAGAACAAG
CAGCAAGTTGTGGGAAGGAGAGACACTCGCCTTTCTCTGTAAGGCTGGTGGAGCTGAAAGTCCCTGT
CTGTGAGCTGGTGGCACATCCCACGGGACCAGACAGCCGAGTTTGTGGCTGGATGGGGCAGGATGG
CATTGTGACGCTGGGTGCCTCTATGGGTACCCAGTTACCATGGCAACACAAGGCTGGAGAAAATGGAC



[View online >](#)

TGGGCCACCTTCCAGCTGGAGATCACCTTCACTGCCATCACAGACAGTGGCACATATGAGTGCAGAGTAT
 CTGAGAAGTCTCGGAACCCAGGCCAGAGATCTGAGCTGGACTCAGAAGATTTCAAGTACTGTAAGTCTCT
 GGAGTCAAGTTTACAAGTTAGTCTGATGAGCCGTGAGCCGCAAGTGATGTTAACCAACACCTTTGACCTG
 TCCTGTGTGCTGAGGGCCGGTTACTCTGACCTCAAGGTGCCACTCACTGTGACGTGGCAGTTCCAGCCAG
 CTAGCTCTCACATCTTCCACCAGCTTATTCGAATCACCCACAATGGCACTATTGAATGGGGGAATTTCT
 ATCCCGGTTCCAAAAGAAGACGAAAGTGTGCGAGTCTTTATTTGTTTCACTCACTAGTCCATGATGCC
 ACTGAGGAAGAGACAGGAGTGTATCAGTGTGAAGTGAAGTTTATGACAGAAAATCCCTATACAACAACC
 GCCCCCGAGGGCTTCTGCCATCTCTACCCACTGAGGATAGCCGTCACTTTACCAGAGCAAGCTAAA
 AGTGAATTCAGGAGTCAAGTCCAAGAGCTCTCCATCACTCCAACACTGATATAGAATGTAGCATCTTG
 TCCCGGTCCAATGGAAACCTTCAGTTAGCCATTATTTGGTATTTTTCTCTGTTTCCACTAATGCCTCTT
 GGCTAAAGATCCTGGAGATGGACCAACCAATGTTATAAAAACTGGGGATGAGTTTACACCCCCACAGAG
 AAAACAAAAATTTCACTAGAGAAGTTTCCAAGACTTATTTCACTGCACATTCTGAATGTGGAAGAC
 AGCGATCGGGCAAAATCACTGTGCTGTGGAGGAATGGCTCCTGTCTACAAATGGCACTGGCACAAGC
 TTGGAGAAAAGAAGTCAAGTAAACAGAAATGAACTCAAGCCCACAGGAAGTAAGTACGTGTCTCCAA
 AGTGTACTGGACGAAAATGTGACTGAGCACAGAGAAGTGCCATCCGCTGCAGCCTGGAGAGTGTAGGC
 AGCTCAGCCACTCTGACTCTGTGATGTGGTACTGGAACAGAGAAAATCTGGAAGTAAATTTGCTGGTGC
 ACTTGCAACATGATGGCTTGTGGAGTATGGGGAAGAGGGGCTCAGGAGGCACCTGCAGTGTACCGTTC
 ATCCTCTACAGACTTTGTCTGAAGCTTCATCAGGTGGAGATGGAGGATGCAGGAATGACTGGTGTAGG
 GTGGCAGAGTGGCAGCTCCATGGACACCCAAGCAAGTGGATTAATCAAGCATCCGATGAGTACACGGGA
 TGGTGCTCACGGTGTGCTTCCAGGCCACGCTTCTTCCAGGATCTGCTCCTCGGCCCTTTACTCTA
 TTTCTGTTCATGTCCCTTCGCTCCTA
 TTTCTGTTCATGTCCCTTCGCTCCTA
 GCCAGGAAGTTGTCAACTGCGTTCCAACACACGGAAGAAAAGCTCTCTGGTGGACTTGAAGAGG
 CTGGAGGTGTACCACAAATAGGAGGGAAGACGAGGAGGAAGATGAAGGCAAC

ACGCGTACGCGGCCGCTCGAGCAGAACTCATCTCAGAAGAGGATCTGGCAGCAAATGATATCCTGGATT
 ACAAGGATGACGACGATAAGGTTTAA

Protein Sequence:

>RC219415 representing NM_004258
 Red=Cloning site Green=Tags(s)

MAGISYVASFFLLLLTKLSIGQREVTVQKGPLFRAEGYPVSIKCNVTGHQGPSEQHFQWSVYLPNTPTQEV
 QIISTKDAAFSYAVYTRVRSQDVYVERVQGNVLLHISLQMKDAGEYECHTPNTDEKYYGSYSAKTNL
 IVIPDTLSATMSSQTLGKEEPLALTEASKATAQHHTLSVTWYLTQDGGGSQATEIISLSKDFILVPG
 PLYTERFAASDVQLNKLGPPTFRLSIERLQSSDQQLFCEATEWIQDPDETFWFIKTKQTDQTLRIQPA
 VKDFQVNIADSLFAEGKPLELVCLVSSGRDPQLQGIWFFNGTEIAHIDAGGVLGLKNDYKERASQGEL
 QVSKLGPFAFLKIFSLGPEDEGAYRCVVAEVMKTRTGSWQVLQRKQSPDSHVHLRKAARSVVMSTKNK
 QQVWVEGETLAFCKAGGAESPLSVSWWHIPRDQTQPEFVAGMGQDQIVQLGASYGVPSYHGNTREKMD
 WATFQLEITFTAITDSGTIECRVSEKSRNQARDLSWTQKISVTVKSLSSLQVSLMSRQPQVMLTNTFDL
 SCVVRAGYSDLKVPLTVTWQFQPASSHIFHQLIRITHNGTIEWGNFLSRFQKTKVQSLSFRSLLVHDA
 TEEETGVYQCEVEVYDRNSLYNNRPPRASAI SHPLRIAVTLPESKLKVNRSRQVQELSINSNTDIECSIL
 SRSNGNLQAIWYFSPVSTNASWLKILEMDQTNVIKTGDEFHTPQRKQKFHTEKVSQDLFQLHILNVED
 SDRGKYHCAVEEWLLSTNGTWHKLGEKKSGLTELKPKPTGSKVRVSKVYWTENVTEHREVAIRCSLESV
 SSATLYSVMWYWNRENSGSKLLVHLQHDGLLEYGEEGLRRLHLCYRSSTDFVLKHLQVEMEDAGMYWCR
 VAEWQLHGHPKWINQASDESQRMVLTVPSEPTLPSRICSSAPLLYFLFICPFVLLLLLLISLLCLYWK
 ARKLSLRSNTRKEKALWDLKEAGGVTTNRREDEEEDEN

TRTRPLEQKLISEEDLAANDILDYKDDDDKV

Chromatograms:

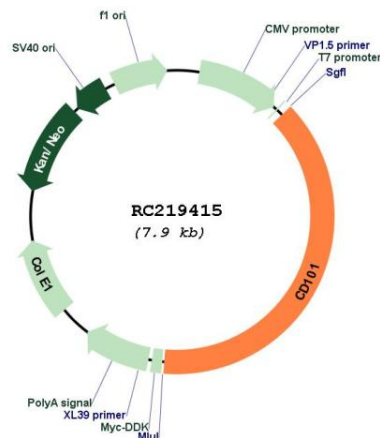
https://cdn.origene.com/chromatograms/mk8116_a10.zip

Restriction Sites:

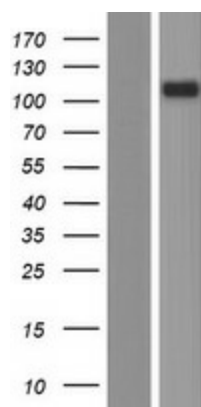
Sgfl-MluI

Reconstitution Method:	<ol style="list-style-type: none"> 1. Centrifuge at 5,000xg for 5min. 2. Carefully open the tube and add 100ul of sterile water to dissolve the DNA. 3. Close the tube and incubate for 10 minutes at room temperature. 4. Briefly vortex the tube and then do a quick spin (less than 5000xg) to concentrate the liquid at the bottom. 5. Store the suspended plasmid at -20°C. The DNA is stable for at least one year from date of shipping when stored at -20°C.
RefSeq:	NM_004258.5
RefSeq Size:	3557 bp
RefSeq ORF:	3066 bp
Locus ID:	9398
UniProt ID:	Q93033
Cytogenetics:	1p13.1
Domains:	ig, IGv, IG
Protein Families:	Transmembrane
MW:	115.1 kDa
Gene Summary:	Plays a role as inhibitor of T-cells proliferation induced by CD3. Inhibits expression of IL2RA on activated T-cells and secretion of IL2. Inhibits tyrosine kinases that are required for IL2 production and cellular proliferation. Inhibits phospholipase C-gamma-1/PLCG1 phosphorylation and subsequent CD3-induced changes in intracellular free calcium. Prevents nuclear translocation of nuclear factor of activated T-cell to the nucleus. Plays a role in the inhibition of T-cell proliferation via IL10 secretion by cutaneous dendritic cells. May be a marker of CD4(+) CD56(+) leukemic tumor cells.[UniProtKB/Swiss-Prot Function]

Product images:



Circular map for RC219415



Western blot validation of overexpression lysate (Cat# [LY418112]) using anti-DDK antibody (Cat# [TA50011-100]). Left: Cell lysates from untransfected HEK293T cells; Right: Cell lysates from HEK293T cells transfected with RC219415 using transfection reagent MegaTran 2.0 (Cat# [TT210002]).