

## Product datasheet for **RC219413**

### COLQ (NM\_080539) Human Tagged ORF Clone

#### Product data:

Product Type:	Expression Plasmids
Product Name:	COLQ (NM_080539) Human Tagged ORF Clone
Tag:	Myc-DDK
Symbol:	COLQ
Synonyms:	CMS5; EAD
Mammalian Cell Selection:	Neomycin
Vector:	pCMV6-Entry (PS100001)
E. coli Selection:	Kanamycin (25 ug/mL)



[View online »](#)

ORF Nucleotide  
Sequence:

>RC219413 representing NM\_080539  
Red=Cloning site Blue=ORF Green=Tags(s)

TTTTGTAATACGACTCACTATAGGGCGGCCGGAATTCGTCGACTGGATCCGGTACCGAGGAGATCTGCC  
GCCGCGATCGCC

ATGGTTGCTCTGAATCCAATGACTTTGGGAATTTATCTTCAGCTTTTCTCTCTATCGTGTCTCAGC  
CGACTTTCATCAACAGCGTTCTTCCAATCTCAGCAGCCCTCCAGCCTGGATCAGAAGAAGCGTGGTGG  
CCACAAAGCATGCTGCCTGCTGACGCCTCTCCACCACCCTGTTCCACCACCATTCTTCAGAGGTGGC  
CGAAGTCCGGGTCCACCGGGGCTTCTGGCAAGACAGGACCAAAGGGAGAAAAGGGGAGCTTGGCCGAC  
CAGGAAGGAAGGGTAGACCTGGCCCCCAGGTGTTCTGGCATGCCTGGGCCATCGGTTGGCCAGGCC  
TGAAGGACCCAGGGGTGAAAAGGTGACCTGGGTATGATGGGCTTGCCAGGGTCAAGAGGACCAATGGC  
TCCAAGGCTACCCTGGATCCAGAGGGGAAAAGGGATCCAGAGGTGAAAAGGGTACCTGGTCCAAAAG  
GAGAAAAGGGTTCCAGATTTCTGGAATGTTGGGCGAGAAAGGTGAAATGGTCCAAAAGGTGAACC  
TGGGATAGCAGGACCCGAGGACCCACAGGAAGACCAGGAAAACGAGGCAAGCAGGGACAGAAAAGGGAT  
AGTGGAGTTATGGGCCACCAGGCAAGCCTGGGCCTTCTGGTCAACCTGGCCGTCGGGGCCCCAGGCC  
CCCCACCTGCAGGACAATTATAATGGGACCCAAAGGGGAAAGAGGATTTCCCGGCCCTCCAGGAAGATG  
TCTTTGTGGACCACTATGAATGTGAATAACCTTCTACGGGAATCTGTGTATGGGCCAGTTCCCCG  
CGAGTTCCTGTGATTTTGTGGTCAACAACCAGGAGGAGCTTGAGAGGCTGAACACCCAAAACGCCATTG  
CCTTCCGAGAGACCAGAGATCTCTGTACTTCAAGGACAGCCTTGGCTGGCTCCCCATCCAGCTGACCCC  
TTTCTACCCTGTGGATTACACTGCAGACCAGCACGGCACCTGTGGGATGGGCTCCTGCAGCCTGGGAG  
GAGTGTGACGACGGTAACAGCGATGTGGGTGACGACTGCATCCGCTGTACCCTGCCTACTGTGGAGATG  
GTCACCGCATGAGGGTGTGGAGGACTGTGACGGCTCTGACTTTGGCTACCTGACATGCGAGACCTATCT  
CCTGGGTCATATGGAGACCTGCAATGCACCCAGTACTGCTACATCGACTCCACGCCCTGCCGCTACTTC  
ACC

ACGCGTACGCGGCCGCTCGAGCAGAACTCATCTCAGAAGAGGATCTGGCAGCAATGATATCCTGGATT  
ACAAGGATGACGACGATAAGGTTTAA

## Protein Sequence:

>RC219413 representing NM\_080539  
Red=Cloning site Green=Tags(s)

MVVLNPMTLGIYLQLFFLSIVSQPTFINSVLPISAALPSLDQKKRGGHKACLLTPPPPPLFPPPFRRGG  
RSPGPPPLPGKTGPKGEKELGRPGRKRPVPGMPGPIGWPGPEGPRGEKGDLMGMLPGSRGPMG  
SKGYPGSRGEKSRGEKGDLPKGEKGFPGFPGMLGQKEMGPKGEPGIAGHRGPTGRPGKRGKQGKGD  
SGVMGPPGKPGSPGQPRPGPPPPAGQLIMGPKGERGFPGPPGRCLCGPTMNVNPNPSYGESVYGPSSP  
RVPVIFVNNQEELERLNTQNAIAFRRDQRSLYFKDSLWLP IQLTPFYVPDYTADQHGTCGDGLLQPGE  
ECDGNSDVGDDCIRCHRAYCGDHRHEGVEDCDGSDFGYLTCEYLPGSYGDLCQTYCYIDSTPCRYF  
T

TRTRPLEQKLISEEDLAANDILDYKDDDDKV

## Chromatograms:

[https://cdn.origene.com/chromatograms/mk8058\\_g01.zip](https://cdn.origene.com/chromatograms/mk8058_g01.zip)

## Restriction Sites:

SgfI-MluI

**Cloning Scheme:**


**ACCN:** NM\_080539

**ORF Size:** 1263 bp

**OTI Disclaimer:** The molecular sequence of this clone aligns with the gene accession number as a point of reference only. However, individual transcript sequences of the same gene can differ through naturally occurring variations (e.g. polymorphisms), each with its own valid existence. This clone is substantially in agreement with the reference, but a complete review of all prevailing variants is recommended prior to use. [More info](#)

**OTI Annotation:** This clone was engineered to express the complete ORF with an expression tag. Expression varies depending on the nature of the gene.

**Components:** The ORF clone is ion-exchange column purified and shipped in a 2D barcoded Matrix tube containing 10ug of transfection-ready, dried plasmid DNA (reconstitute with 100 ul of water).

**Reconstitution Method:**

1. Centrifuge at 5,000xg for 5min.
2. Carefully open the tube and add 100ul of sterile water to dissolve the DNA.
3. Close the tube and incubate for 10 minutes at room temperature.
4. Briefly vortex the tube and then do a quick spin (less than 5000xg) to concentrate the liquid at the bottom.
5. Store the suspended plasmid at -20°C. The DNA is stable for at least one year from date of shipping when stored at -20°C.

**RefSeq:** [NM\\_080539.4](#)

**RefSeq Size:** 2909 bp

**RefSeq ORF:** 1266 bp

**Locus ID:** 8292

**UniProt ID:** [Q9Y215](#)

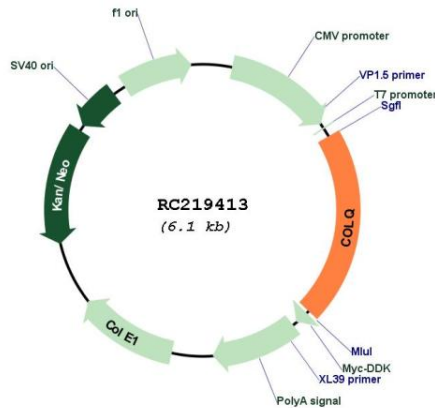
**Cytogenetics:** 3p25.1

**Protein Families:** Druggable Genome, Transmembrane

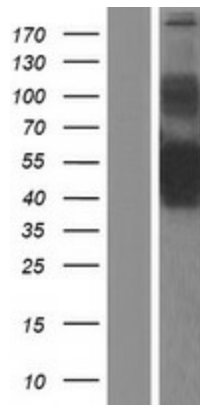
**MW:** 41.7 kDa

**Gene Summary:** This gene encodes the subunit of a collagen-like molecule associated with acetylcholinesterase in skeletal muscle. Each molecule is composed of three identical subunits. Each subunit contains a proline-rich attachment domain (PRAD) that binds an acetylcholinesterase tetramer to anchor the catalytic subunit of the enzyme to the basal lamina. Mutations in this gene are associated with endplate acetylcholinesterase deficiency. Multiple transcript variants encoding different isoforms have been found for this gene. [provided by RefSeq, Jul 2008]

**Product images:**



Circular map for RC219413



Western blot validation of overexpression lysate (Cat# [LY409128]) using anti-DDK antibody (Cat# [TA50011-100]). Left: Cell lysates from untransfected HEK293T cells; Right: Cell lysates from HEK293T cells transfected with RC219413 using transfection reagent MegaTran 2.0 (Cat# [TT210002]).