

Product datasheet for **RC219411**

MROH9 (NM_025063) Human Tagged ORF Clone

Product data:

Product Type:	Expression Plasmids
Product Name:	MROH9 (NM_025063) Human Tagged ORF Clone
Tag:	Myc-DDK
Symbol:	MROH9
Synonyms:	ARMC11; C1orf129
Mammalian Cell Selection:	Neomycin
Vector:	pCMV6-Entry (PS100001)
E. coli Selection:	Kanamycin (25 ug/mL)



[View online »](#)

ORF Nucleotide Sequence:

>RC219411 representing NM_025063
 Red=Cloning site Blue=ORF Green=Tags(s)

TTTTGTAATACGACTCACTATAGGGCGGCCGGAATTCGTCGACTGGATCCGGTACCGAGGAGATCTGCC
 GCC**GCGATCGCC**

ATGTTGACAAGGAATCCAAAAACAAGAGTAGTCTCCAGATTCTGCAAGACAGTGTGAAATGGCACCACA
 TGGCACATAAAGTTAACAGCCTATTGGATGCATACTCAGGCCTGTTAAGTAATGAATCCATGATCCTGGC
 TGTGAACTCCAGCTTTGTGGATCCCTTACTGCAGTTTGAATCTCAGTTGAAGATAATAGAGTCATCCTTT
 GGAATGCTAGTTGTCATGCCAAGTCTTGACAAAGTAAAAGAAATGGGGAGCAGTTATGAGTACATTGAGG
 ACATGGAGAATTTATACCACAATATTTTAAATATATAGAGAACATTCTTACGAGCTTGGTGTCTAAAGA
 CCTCTACAACTACAGATCTTAAAGAAATGCTCGTGTGGATGAGTAAAGATAGCTCATATCTGCAAGAG
 AGAATAATGGTGATCATCAACAAGGTGTTAAGATTTACAGTCACAAAAGTCAGAAAATACATAAGTGTG
 ATGCTCCATGTTGGGTCTCCTGGCAGCAGAGCTGTCTCTTTGTGTTCCATGAAGATCCCTCGATTGT
 AAAACAAGCATCATTGGGAATGTGTACCTCCTACATTGCACGGTGTGAGAACGATATTGGAACAAAT
 AAGCCTACAAACGGTAAAAGTCATAGCCTCCAGTTTCTTCTTCTGATGTAGAATTTCTACCCAAGGAGT
 TTCAACAAGACGAAAGTAAAATAGCTCAGAGAGTAGGGCAAACCTTACTGCCTCCCTTGCTGACTGACTT
 TGTGCAGAGTCTCCTGATGAAACTCTTTCACCTGATGATAAAATCGCATCTGATGCAGCATCCATACTG
 ATATTTACTCTGGAATTCATGCCGAGAAGGTCACCATGGTGTCTAAGATCGTGGATGCTATTTACAGGC
 AACTGTGTGATAACAATTGTATGAAGGATGTTATGTTGCAGGTTATCACTTTGTTGACATGCACTTCACC
 CAAGAAGGTCATCTTCACTTATGGACTACCCAGTCCAGCAGACGACACTCTGATACAGATGTGGAAG
 GCGGCATGTTCTCAGCGAGCGTGGCCCTCACGTGCTGAAGACAATCTTATTGATACTGAAAGGAAAGC
 TGGGGAAATGGAGGACACCGTAACGGAAGGAAACGTTTCTCTTTGATATTACCAACTGATGCCTTT
 GCGGCATGCCAGGCCCTGTGCACCTTTCTGCCTCTTGGTTCTACAGGAAAGCGGTGGCCAGTATTTTC
 CCCCAGCTCTTGACGACTCTTATGTTCCAAGTCTTCTACAACAGTGAGCTGAAACCGATACTCAAGGACA
 GGGCTTTGTATGCCAGGATGCCCTGAGAGTCTGCTGAATTGTTCTGGACTGCAACAGGTGGATATTAC
 TCTAATGAAGGAGAATTTCTGGACAGTTATCTGAAGATCTGTGTTACTATCATGGAGTCTGCTTTATT
 GCTAAAACCTCAGTGAATATAACTTTCCACAGTTTCCGGAGACCCTGAGTTATCTCTATAAGCTCTCAG
 TAGAAGGCTCTAGAAGGTCAGAAGACACTGTCATCGTATTAATATTCCTCACTGAAGTGAGTTTTGTAGA
 CTGTGAACAGCTGTGTTCTCATTCTTTCTTACCCAAATTTAAATCAAATTCAGTTTCTCGTATCT
 CTCCTCTGAATGTTGGTCTTACCAAGACTTAAGATCA

ACGCGTACGCGGCCGCTCGAGCAGAAACTCATCTCAGAAGAGGATCTGGCAGCAAATGATATCCTGGATT
 ACAAGGATGACGACGATAAGGTTTAA

Protein Sequence:

>RC219411 representing NM_025063
 Red=Cloning site Green=Tags(s)

MLTRNPKTKSSLQILQDSVKWHHMAHKVNSLLDAYSGLLSNESMILAVNSSFVDPDLLQFESQLKIIESSF
 GMLVVMPSLDDKVKEMGSSYEYIEDMENLYHNILNIYENILTSLVSKDLYKLQILKEMLVWMSKDSSYLQE
 RIMVIINKVLRFTVTKVRKYISVDAPCLGLLAEELSLCSHEDPSIVKQASLGMCHLLYIARCQNDIGTN
 KPTNGKSHSLQFPSSDVEFLPKEFQQDESKIAQRVGTLLPPLL TDFVQSLLMKLSSPDDKIASDAASIL
 IFTFLEFHAEKVTMVKIYDAIYRQLCDNNCMKDVMLQVITLLTCTSPKKVIFQLMDYPVPADDTLIQMWK
 AACSQASVAPHVLKTILLILKKGKPGEMEDTVTEGKRFSLDITNLMPLAACQALCTFLPLGSYRKAVAQYF
 PQLLTTLMFQVFYNSELKPIKDRALYAQDALRVLLNCSGLQQVDITLMKENFWDQLSEDLQYHGVCFI
 AKTLSEYNFPQFPETLSYLYKLSVEGPRRSEDVIVLIFLTVSVFVDCEQLCSHFLLPKFKSKFQFLVS
 LPLNVGSYQDLRS

TRTRPLEQKLISEEDLAANDILDYKDDDDKV

Chromatograms:

https://cdn.origene.com/chromatograms/ja1399_e07.zip

Restriction Sites:

Sgfl-Mlul

Cloning Scheme:


ACCN: NM_025063

ORF Size: 1719 bp

OTI Disclaimer: The molecular sequence of this clone aligns with the gene accession number as a point of reference only. However, individual transcript sequences of the same gene can differ through naturally occurring variations (e.g. polymorphisms), each with its own valid existence. This clone is substantially in agreement with the reference, but a complete review of all prevailing variants is recommended prior to use. [More info](#)

OTI Annotation: This clone was engineered to express the complete ORF with an expression tag. Expression varies depending on the nature of the gene.

Components: The ORF clone is ion-exchange column purified and shipped in a 2D barcoded Matrix tube containing 10ug of transfection-ready, dried plasmid DNA (reconstitute with 100 ul of water).

- Reconstitution Method:**
1. Centrifuge at 5,000xg for 5min.
 2. Carefully open the tube and add 100ul of sterile water to dissolve the DNA.
 3. Close the tube and incubate for 10 minutes at room temperature.
 4. Briefly vortex the tube and then do a quick spin (less than 5000xg) to concentrate the liquid at the bottom.
 5. Store the suspended plasmid at -20°C. The DNA is stable for at least one year from date of shipping when stored at -20°C.

RefSeq: [NM_025063.4](#)

RefSeq Size: 2258 bp

RefSeq ORF: 1722 bp

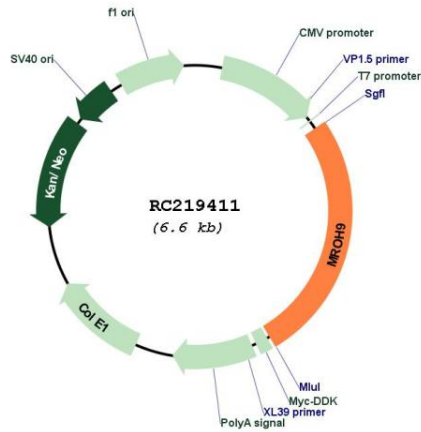
Locus ID: 80133

UniProt ID: [Q5TGP6](#)

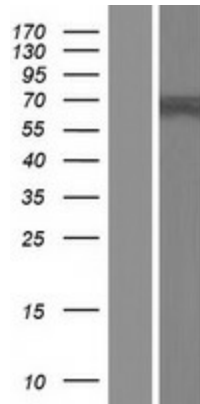
Cytogenetics: 1q24.3

MW: 64.9 kDa

Product images:



Circular map for RC219411



Western blot validation of overexpression lysate (Cat# [LY410935]) using anti-DDK antibody (Cat# [TA50011-100]). Left: Cell lysates from untransfected HEK293T cells; Right: Cell lysates from HEK293T cells transfected with RC219411 using transfection reagent MegaTran 2.0 (Cat# [TT210002]).