

Product datasheet for RC219398L1

Angiopoietin 1 (ANGPT1) (NM_001146) Human Tagged Lenti ORF Clone

Product data:

| | |
|---------------------------|--|
| Product Type: | Expression Plasmids |
| Product Name: | Angiopoietin 1 (ANGPT1) (NM_001146) Human Tagged Lenti ORF Clone |
| Tag: | Myc-DDK |
| Symbol: | Angiopoietin 1 |
| Synonyms: | AGP1; AGPT; ANG1; HAE5 |
| Mammalian Cell Selection: | None |
| Vector: | pLenti-C-Myc-DDK (PS100064) |
| E. coli Selection: | Chloramphenicol (34 ug/mL) |
| ORF Nucleotide Sequence: | The ORF insert of this clone is exactly the same as(RC219398). |
| Restriction Sites: | SgfI-MluI |
| Cloning Scheme: | |

Cloning sites used for ORF Shuttling:



* The last codon before the Stop codon of the ORF.

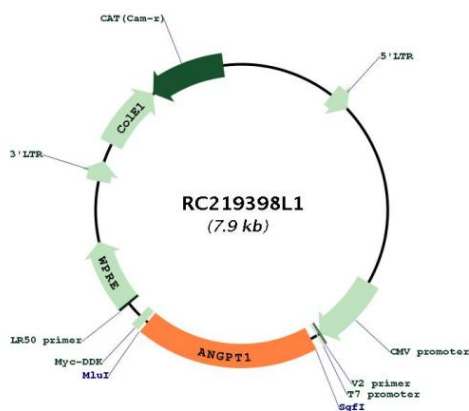
| | |
|-----------|-----------|
| ACCN: | NM_001146 |
| ORF Size: | 1494 bp |



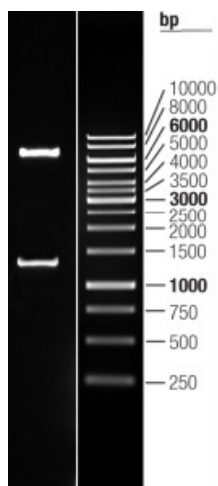
[View online »](#)

| | |
|-------------------------------|---|
| OTI Disclaimer: | The molecular sequence of this clone aligns with the gene accession number as a point of reference only. However, individual transcript sequences of the same gene can differ through naturally occurring variations (e.g. polymorphisms), each with its own valid existence. This clone is substantially in agreement with the reference, but a complete review of all prevailing variants is recommended prior to use. More info |
| OTI Annotation: | This clone was engineered to express the complete ORF with an expression tag. Expression varies depending on the nature of the gene. |
| Components: | The ORF clone is ion-exchange column purified and shipped in a 2D barcoded Matrix tube containing 10ug of transfection-ready, dried plasmid DNA (reconstitute with 100 ul of water). |
| Reconstitution Method: | <ol style="list-style-type: none">1. Centrifuge at 5,000xg for 5min.2. Carefully open the tube and add 100ul of sterile water to dissolve the DNA.3. Close the tube and incubate for 10 minutes at room temperature.4. Briefly vortex the tube and then do a quick spin (less than 5000xg) to concentrate the liquid at the bottom.5. Store the suspended plasmid at -20°C. The DNA is stable for at least one year from date of shipping when stored at -20°C. |
| RefSeq: | NM_001146.3 |
| RefSeq Size: | 4338 bp |
| RefSeq ORF: | 1497 bp |
| Locus ID: | 284 |
| UniProt ID: | Q15389 |
| Cytogenetics: | 8q23.1 |
| Protein Families: | Druggable Genome, ES Cell Differentiation/IPS, Secreted Protein |
| MW: | 57.3 kDa |
| Gene Summary: | This gene encodes a secreted glycoprotein that belongs to the angiotensin family. Members of this family play important roles in vascular development and angiogenesis. All angiotensins bind with similar affinity to an endothelial cell-specific tyrosine-protein kinase receptor. The protein encoded by this gene is a secreted glycoprotein that activates the receptor by inducing its tyrosine phosphorylation. It plays a critical role in mediating reciprocal interactions between the endothelium and surrounding matrix and mesenchyme and inhibits endothelial permeability. The protein also contributes to blood vessel maturation and stability, and may be involved in early development of the heart. Mutations in this gene are associated with hereditary angioedema. [provided by RefSeq, Aug 2020] |

Product images:



Circular map for RC219398L1



Double digestion of RC219398L1 using SgfI and MluI