

## Product datasheet for RC219393

### Ninjurin2 (NINJ2) (NM\_016533) Human Tagged ORF Clone

#### Product data:

**Product Type:** Expression Plasmids  
**Product Name:** Ninjurin2 (NINJ2) (NM\_016533) Human Tagged ORF Clone  
**Tag:** Myc-DDK  
**Symbol:** Ninjurin2  
**Mammalian Cell Selection:** Neomycin  
**Vector:** pCMV6-Entry (PS100001)  
**E. coli Selection:** Kanamycin (25 ug/mL)  
**ORF Nucleotide Sequence:** >RC219393 representing NM\_016533  
Red=Cloning site Blue=ORF Green=Tags(s)

TTTTGTAATACGACTCACTATAGGGCGGCCGGGAATTCGTCGACTGGATCCGGTACCGAGGAGATCTGCC  
GCC**CGATCGCC**

ATGGCAGGTCTGTCCCGCCAGCTGTGTGCTCTCTCCACCCGAAGAAAGCAGCAGAGACTCAGACGGCGG  
AGCCTGGAGGAGCCACGCAGTCTGTTCCCGGCACCCGGTGCCTGTGAAGGGACTTGAGGGCAGCGAGAT  
GGAATCAGCAAGAGAAAACATCGACCTCAACCTGGAAGCTCCGACCCAGGAGCCAGCCATCAACCTG  
AACCATACGCCACCAAGAAGAGCGTGGCGGAGAGCATGCTGGACGTGGCCCTGTTTCATGTCCAACGCCA  
TGGCGCTGAAGGCGGTGCTGGAGCAGGGACCATCCTCTCACTACACCACCCTGGTCACCCCTCATCAG  
CCTCTCTGCTCCTGCAGGTGGTCATCGGTGCTCCTGCTCGTGGTATTGCACGGCTGAACCTGAATGAG  
GTAGAAAAGCAGTGGCGACTCAACCAGCTCAACAACGCAGCCACCATCTTGGTCTTCTCACTGTGGTCA  
TCAATGTTTTTCATTACAGCCTTCGGGGCACATAAAACAGGGTTCTCGGCTGCCAGGGCCTCAAGGAATCC  
TCTC

**ACGCGT**ACGCGGCCGCTCGAGCAGAACTCATCTCAGAAGAGGATCTGGCAGCAATGATATCCTGGATT  
ACAAGGATGACGACGATAAGGTTTAA

**Protein Sequence:** >RC219393 representing NM\_016533  
Red=Cloning site Green=Tags(s)

MAGLSRQLCALSHPKKAAETQTAEPGGAHAVCSRHPVVRVKGLEGSEMESARENIDLQPGSSDPRSQPINL  
NHYATKKSVAESMLDVALFMSNAMRLKAVLEQGPSSHYTTLVTLISL LLLQVVIGVLLVVIARLN LNE  
VEKQWRLNQLNNAATILVFFTVVINVFITAFGAHKTGFLAARASRNPL

**TR**TRPLEQKLI SEEDLAANDILDYKDDDDKV

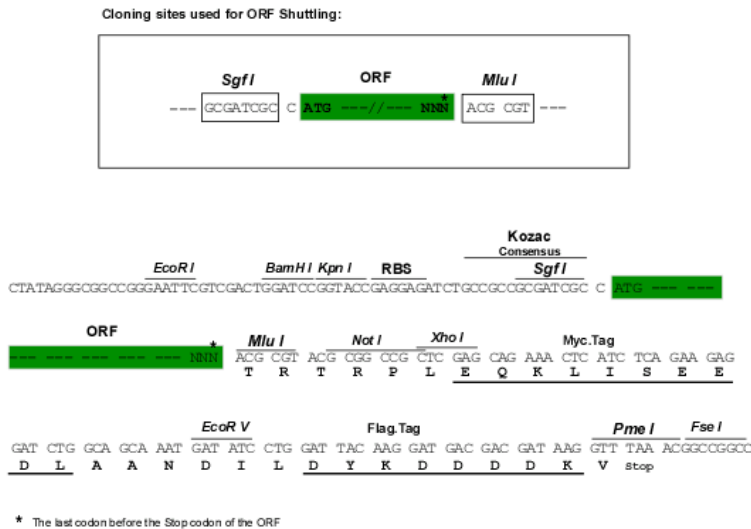
**Chromatograms:** [https://cdn.origene.com/chromatograms/mk8009\\_e04.zip](https://cdn.origene.com/chromatograms/mk8009_e04.zip)



[View online »](#)

**Restriction Sites:** SgfI-MluI

**Cloning Scheme:**



**ACCN:** NM\_016533

**ORF Size:** 564 bp

**OTI Disclaimer:** The molecular sequence of this clone aligns with the gene accession number as a point of reference only. However, individual transcript sequences of the same gene can differ through naturally occurring variations (e.g. polymorphisms), each with its own valid existence. This clone is substantially in agreement with the reference, but a complete review of all prevailing variants is recommended prior to use. [More info](#)

**OTI Annotation:** This clone was engineered to express the complete ORF with an expression tag. Expression varies depending on the nature of the gene.

**Components:** The ORF clone is ion-exchange column purified and shipped in a 2D barcoded Matrix tube containing 10ug of transfection-ready, dried plasmid DNA (reconstitute with 100 ul of water).

**Reconstitution Method:**

1. Centrifuge at 5,000xg for 5min.
2. Carefully open the tube and add 100ul of sterile water to dissolve the DNA.
3. Close the tube and incubate for 10 minutes at room temperature.
4. Briefly vortex the tube and then do a quick spin (less than 5000xg) to concentrate the liquid at the bottom.
5. Store the suspended plasmid at -20°C. The DNA is stable for at least one year from date of shipping when stored at -20°C.

**RefSeq:** [NM\\_016533.5](#), [NP\\_057617.2](#)

**RefSeq Size:** 1073 bp

**RefSeq ORF:** 429 bp

**Locus ID:** 4815

**UniProt ID:** [Q9NZG7](#)

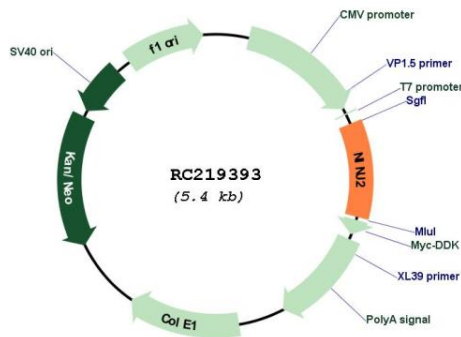
**Cytogenetics:** 12p13.33

**Protein Families:** Transmembrane

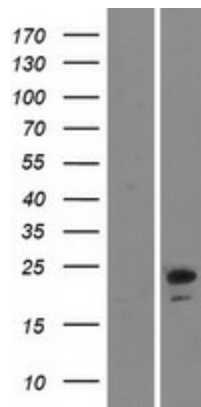
**MW:** 20.2 kDa

**Gene Summary:** The protein encoded by this gene belongs to the ninjurin (for nerve injury induced) family. It is a cell surface adhesion protein that is upregulated in Schwann cells surrounding the distal segment of injured nerve, and promotes neurite outgrowth, thus may have a role in nerve regeneration after nerve injury. [provided by RefSeq, Oct 2011]

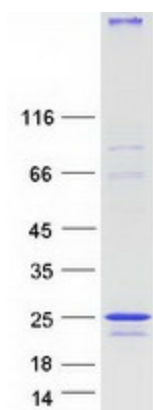
**Product images:**



Circular map for RC219393



Western blot validation of overexpression lysate (Cat# [LY413919]) using anti-DDK antibody (Cat# [TA50011-100]). Left: Cell lysates from untransfected HEK293T cells; Right: Cell lysates from HEK293T cells transfected with RC219393 using transfection reagent MegaTran 2.0 (Cat# [TT210002]).



Coomassie blue staining of purified NINJ2 protein (Cat# [TP319393]). The protein was produced from HEK293T cells transfected with NINJ2 cDNA clone (Cat# RC219393) using MegaTran 2.0 (Cat# [TT210002]).