

## Product datasheet for **RC219390L4V**

### FGFR1 (NM\_015850) Human Tagged ORF Clone Lentiviral Particle

#### Product data:

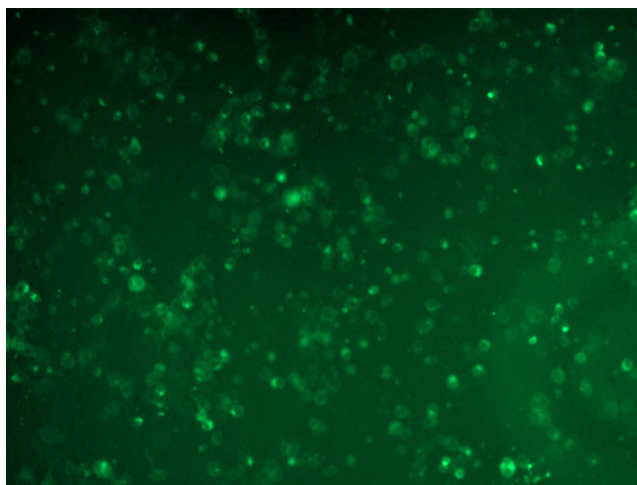
Product Type:	Lentiviral Particles
Product Name:	FGFR1 (NM_015850) Human Tagged ORF Clone Lentiviral Particle
Symbol:	FGFR1
Synonyms:	bFGF-R-1; BFGFR; CD331; CEK; ECCL; FGFR; FGFR-1; FLG; FLT-2; FLT2; HBGFR; HH2; HRTFDS; KAL2; N-SAM; OGD
Mammalian Cell Selection:	Puromycin
Vector:	pLenti-C-mGFP-P2A-Puro (PS100093)
Tag:	mGFP
ACCN:	NM_015850
ORF Size:	2454 bp
ORF Nucleotide Sequence:	The ORF insert of this clone is exactly the same as(RC219390).
OTI Disclaimer:	The molecular sequence of this clone aligns with the gene accession number as a point of reference only. However, individual transcript sequences of the same gene can differ through naturally occurring variations (e.g. polymorphisms), each with its own valid existence. This clone is substantially in agreement with the reference, but a complete review of all prevailing variants is recommended prior to use. <a href="#">More info</a>
OTI Annotation:	This clone was engineered to express the complete ORF with an expression tag. Expression varies depending on the nature of the gene.
RefSeq:	<a href="#">NM_015850.2</a>
RefSeq Size:	4043 bp
RefSeq ORF:	2463 bp
Locus ID:	2260
UniProt ID:	<a href="#">P11362</a>
Cytogenetics:	8p11.23
Domains:	pkinase, TyrKc, S_TKc, ig, IGc2, IG



[View online »](#)

<b>Protein Families:</b>	Druggable Genome, Protein Kinase, Transmembrane
<b>Protein Pathways:</b>	Adherens junction, MAPK signaling pathway, Melanoma, Pathways in cancer, Prostate cancer, Regulation of actin cytoskeleton
<b>MW:</b>	91.38 kDa
<b>Gene Summary:</b>	<p>The protein encoded by this gene is a member of the fibroblast growth factor receptor (FGFR) family, where amino acid sequence is highly conserved between members and throughout evolution. FGFR family members differ from one another in their ligand affinities and tissue distribution. A full-length representative protein consists of an extracellular region, composed of three immunoglobulin-like domains, a single hydrophobic membrane-spanning segment and a cytoplasmic tyrosine kinase domain. The extracellular portion of the protein interacts with fibroblast growth factors, setting in motion a cascade of downstream signals, ultimately influencing mitogenesis and differentiation. This particular family member binds both acidic and basic fibroblast growth factors and is involved in limb induction. Mutations in this gene have been associated with Pfeiffer syndrome, Jackson-Weiss syndrome, Antley-Bixler syndrome, osteoglophonic dysplasia, and autosomal dominant Kallmann syndrome 2. Chromosomal aberrations involving this gene are associated with stem cell myeloproliferative disorder and stem cell leukemia lymphoma syndrome. Alternatively spliced variants which encode different protein isoforms have been described; however, not all variants have been fully characterized. [provided by RefSeq, Jul 2008]</p>

### Product images:



[RC219390L4] was used to prepare Lentiviral particles using [TR30037] packaging kit. HEK293T cells were transduced with RC219390L4V particle to overexpress human FGFR1-mGFP fusion protein.