

## Product datasheet for RC219388

### Laeverin (LVRN) (NM\_173800) Human Tagged ORF Clone

#### Product data:

Product Type:	Expression Plasmids
Product Name:	Laeverin (LVRN) (NM_173800) Human Tagged ORF Clone
Tag:	Myc-DDK
Symbol:	Laeverin
Synonyms:	APQ; AQPEP; TAQPEP
Mammalian Cell Selection:	Neomycin
Vector:	pCMV6-Entry (PS100001)
E. coli Selection:	Kanamycin (25 ug/mL)
ORF Nucleotide Sequence:	>RC219388 representing NM_173800 Red=Cloning site Blue=ORF Green=Tags(s)

TTTTGTAATACGACTCACTATAGGGCGCCGGGAATTCGTCGACTGGATCCGGTACCGAGGAGATCTGCC  
GCC**CGATCGCC**

ATGGGGCCCCCTCCAGCTCAGGCTTCTATGTGAGCCGCGCAGTGGCCCTGCTGCTGGCTGGGTTGGTAG  
CCGCCCTCTGCTGGCGCTGGCCGTAAGCGCCGCTTGTACGGCCACTGCGAGCGCGTCCCACCGTCGGA  
GCTGCCTGGACTCAGGGACTCGGAAGCCGAGTCTCCCTCCCTCAGGCAGAAGCCGACGCCGACCCCG  
AAACCCAGCAGTGCACGCGAGCTAGCGGTGACGACCACCCGAGCAACTGGCGACCCCGGGGCCCTGGG  
ACCAGCTACGCCCTCCGCGCCTGGCTCGTGCCGCTGCACTACGATCTGGAGCTGTGGCCGAGCTGAGGCC  
CGACGAGCTTCCGCGCGGTCTTTGCCCTTCACTGGCCGCGTGAACATCACGGTGCCTGCACGGTGGCC  
ACCTCTCGACTGCTGCTGCATAGCCTCTCCAGGACTGCGAGCGCGCCGAGGTGCGGGGACCCCTTTCCC  
CGGGCACTGGGAACGCCACAGTGGGCCGCGTGCCTGGACGACGTGTGGTTTCGCGCTGGACACGGAATA  
CATGGTGTGGAGCTCAGTGAGCCCTGAAACCTGGTAGCAGCTACGAGCTGCAGCTTAGCTTCTCGGGC  
CTGGTGAAGGAAGACCTCAGGGAGGGACTCTTCTCAACGTCTACACCGACAGGGCGAGCGCAGGGCCC  
TGTTAGCGTCCCAGCTGGAACCAACATTTGCCAGGTATGTTTTCCCTGTTTTGATGAGCCAGCTGTAA  
GGCAACTTTTAAATTACAATGATTCATCATCCAAGTTATGTGGCCCTTTCCAACATGCCAAAGCTAGT  
CAGTCTGAAAAGAAGATGTGAATGGAAGCAAATGGACTGTTACAACCTTTTCCACTACGCCCCACATGC  
CAACTTACTTAGTCGATTTGTTATATGTGACTATGACCAGTCAACAGAACAGAAAGGGCAAGGAGAT  
ACGCATCTGGGCCCGAAAGATGCAATTGCAAATGGAAGTGCAGACTTTGCTTTGAACATCACAGGTCCC  
ATCTTCTTTTTCTGGAGGATTTGTTTAAATACAGTACTCTCTTCCAAAAACAGATATAATTGCCTTGC  
CTAGTTTTGACAACCATGCAATGGAAAAGTGGGACTAATGATATTTGATGAATCAGGATTGTTGTTGGA  
ACCAAAAGATCAACTGACAGAAAAAAGACTCTGATCTCCTATGTTGTCTCCACGAGATTGGACACCAG  
TGGTTTGGAAACTTGGTTACCATGAATTTGGTGAACAATATCTGGCTCAACGAGGGTTTTGCATCTATT  
TTGAGTTTGAAGTAATTAACACTTTAATCCTAACTCCCAAGAAATGAGATCTTTTTTTCTAACATTTT  
ACATAATATCCTCAGAGAAGATCACGCCCTGGTACTAGAGCTGTGGCCATGAAGGTGAAAATTTCAA



[View online >](#)

ACAAGTGAATACAGGAACCTTTGACATATTTACTTACAGCAAGGGAGCGTCTATGGCCCGGATGCTTT  
 CTGTGTTCTTGAATGAGCATTATTTGTGTCAGTGCCTCAAGTCATATTTGAAGACATTTTCTACTCAAA  
 CGCTGAGCAAGATGATCTATGGAGGCATTTTCAAATGGCCATAGATGACCAGAGTACAGTTATTTTGCCA  
 GCAACAATAAAAAACATAATGGACAGTTGGACACACCAGAGTGGTTTTCCAGTGATCACTTTAAATGTGT  
 CTACTGGCGTCATGAAACAGGAGCCATTTATCTTGAAAAATTAAAAATCGGACTCTTCTAACCAGCAA  
 TGACACATGGATTGTCCCTATTCTTTGGATAAAAAATGGAACACACAACCTTTAGTCTGGCTAGATCAA  
 AGCAGCAAAGTATCCAGAAATGCAAGTTTCAGATTCTGACCATGACTGGGTGATTTTGAATTTGAATA  
 TGACTGGATATTATAGAGTTAATTATGATAAATTAGGTTGGAAGAACTAAATCAACAACCTGAAAAGGA  
 TCCTAAGGCGATTCTGTTATTCACAGACTGCAGTTGATTGATGATGCCTTTTCTTGTCTAAAAACAAT  
 TATATTGAGATTGAAACAGCACTTGAGTTAACCAAGTACCTTGCTGAAGAAGATGAAATTATAGTATGGC  
 ATACAGCTTGGTAAACTTGGTAACCAGGGATCTTGTCTGAGGTGAACATCTATGATATACTCATT  
 ATTAAGAGGTACCTATTAAGAGACTTAATTAATGGAATATTTTCAACTATAATTCGTGAAAAAT  
 GTGTTGGCATTACAAGATGACTACTTAGCTCTAATCACTGGAAAACTTTTGTAACTGCGTGTGGT  
 TGGGCTTGAAGACTGCCTTCAGCTGTCAAAGAATTTTCGAAAAATGGGTGGATCATCCAGAAAAATGA  
 AATACCTTATCCAATTAAGATGTGGTTTTATGTTATGGCATTGCCTTGGGAAGTATAAGAGTGGGAC  
 ATCTTGTTAAATACTTACACTAATAACAACAACAAGAAGAAAAGATTCAACTTGCTTATGCAATGAGCT  
 GCAGCAAAGACCCATGGATACTTAACAGATATATGGAGTATGCCATCAGCACATCTCCATTCACTCTAA  
 TGAACAATAATAATTGAGGTTGTGGCTTATCTGAAGTTGGCCGGTATGTGCAAAAAGACTTCTTAGTC  
 AACAACCTGGCAAGCTGTGAGTAAAAGGTATGGAACACAATCATTGATTAATCTAATATATAACAATAGGGA  
 GAACCGTAACTACAGATTTACAGATTGTGGAGCTGCAGCAGTTTTTCAGTAAACATGTTGGAGGAACCA  
 GAGGATCAGAGTTCATGCCAACTTACAGACAATAAAGAATGAAAACTGAAAAACAAGAAGCTAAGTGCC  
 AGGATAGCTGCGTGGCTAAGGAGAAACACA

ACGCGTACGCGGCGCTCGAGCAGAACTCATCTCAGAAGAGGATCTGGCAGCAAATGATATCCTGGATT  
 ACAAGGATGACGACGATAAGGTTTAA

**Protein Sequence:**

>RC219388 representing NM\_173800  
 Red=Cloning site Green=Tags(s)

MGPPSSSGFYVSRVAVLLLAGLVAALLLALAVLAALYGHCEVPPSELPLGRDSEAESPPLRQKPTPTP  
 KPSSARELAVTTTTPSNWRPPGPWDQLRLPPWLVPLHYDLELWPQLRPDELPAAGSLPFTGRVNITVRCVVA  
 TSRLLLHSLFQDCERAERVGRPLSPGTGNATVGRVPVDDVWFALDTEYMLVLELSEPLKPGSSYELQLSFSG  
 LVKEDLREGLFLNVYTDQGERRALLASQLEPTFARYVFPFCFDEPALKATFNITMIHHPYVALSNMPKLG  
 QSEKEDVNGSKWTVTTFSTTPHMPTYLVAFVICDYDHNVRTERGKEIRIWORKDAIANGSADFALNITGP  
 IFSFLEDLFNISYSLPKTDIIALPSFDNHAMENWGLMIFDESGLLLEPKDQLTEKKTLSYVVSHEIGHQ  
 WFGNLVTMNNWNNIWLNEGFASYFEFEVINYNPKLPRNEIFFSNILHNILREDHALVTRAVAMKVENFK  
 TSEIQELFDIFTYSGGASMARMLSCFLNEHLFVSALKSYLKTFSYSNAEQDDLWRHFQMAIDDQSTVILP  
 ATIKNIMDSWTHQSGFPVITLNVSTGVMKQEPFYLENIKNRTLLTSNDTWIVPILWIKNGTTQPLVWLDQ  
 SSKVFPQVSDSDHDWVILNLMNTGYRVNYDKLGWKLNQQLKDPKAIPIVHRLQLIDDAFSLSKNN  
 YIEIETALELTKYLAEEDEIIVWHTVLVNLVTRDLVSEVNIYDIYSLKRYLLKRLNLWNIYSTIIREN  
 VLALQDDYLALISLEKLFVTACWLGLEDCLQLSKELFAKWDHPENEIPYPIKDVVLCYGIALGSDKEWD  
 ILLNTYNTTNNKEEKIQLAYAMSCSKDPWILNRYMEYAISTSPFSTNETNIEEVASSEVGRYVAKDFLV  
 NNWQAVSKRYGTQSLINLIYTIIGRTVTDLQIVELQQFFSNMLEEHRIRVHANLQTIKNENLNKKNKLSA  
 RIAAWLRRNT

TRTRPLEQKLISEEDLAANDILDYKDDDDKV

**Chromatograms:**

[https://cdn.origene.com/chromatograms/mk8013\\_a12.zip](https://cdn.origene.com/chromatograms/mk8013_a12.zip)

**Restriction Sites:**

Sgfl-Mlul

**Cloning Scheme:**



**ACCN:** NM\_173800

**ORF Size:** 2970 bp

**OTI Disclaimer:** The molecular sequence of this clone aligns with the gene accession number as a point of reference only. However, individual transcript sequences of the same gene can differ through naturally occurring variations (e.g. polymorphisms), each with its own valid existence. This clone is substantially in agreement with the reference, but a complete review of all prevailing variants is recommended prior to use. [More info](#)

**OTI Annotation:** This clone was engineered to express the complete ORF with an expression tag. Expression varies depending on the nature of the gene.

**Components:** The ORF clone is ion-exchange column purified and shipped in a 2D barcoded Matrix tube containing 10ug of transfection-ready, dried plasmid DNA (reconstitute with 100 ul of water).

- Reconstitution Method:**
1. Centrifuge at 5,000xg for 5min.
  2. Carefully open the tube and add 100ul of sterile water to dissolve the DNA.
  3. Close the tube and incubate for 10 minutes at room temperature.
  4. Briefly vortex the tube and then do a quick spin (less than 5000xg) to concentrate the liquid at the bottom.
  5. Store the suspended plasmid at -20°C. The DNA is stable for at least one year from date of shipping when stored at -20°C.

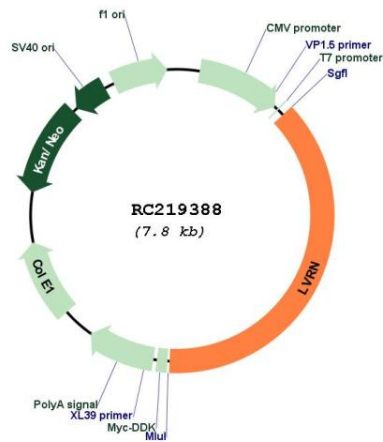
**RefSeq:** [NM\\_173800.3](#), [NP\\_776161.2](#)

**RefSeq Size:** 4502 bp

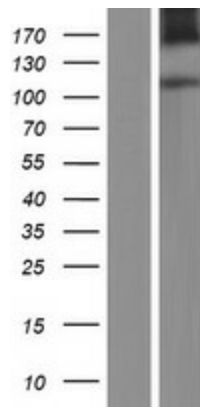
**RefSeq ORF:** 2973 bp

**Locus ID:** 206338  
**UniProt ID:** [Q6Q4G3](#)  
**Cytogenetics:** 5q23.1  
**Protein Families:** Protease, Transmembrane  
**MW:** 113.1 kDa  
**Gene Summary:** Metalloprotease which may be important for placentation by regulating biological activity of key peptides at the embryo-maternal interface. On synthetic substrates it shows a marked preference for Leu-4-methylcoumaryl-7-amide (Leu-MCA) over Met-MCA, Arg-LCA and Lys-LCA. Cleaves the N-terminal amino acid of several peptides such as angiotensin-3, kisspeptin-10 and endokinin C.[UniProtKB/Swiss-Prot Function]

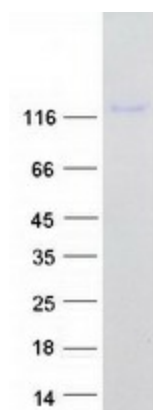
**Product images:**



Circular map for RC219388



Western blot validation of overexpression lysate (Cat# [LY406576]) using anti-DDK antibody (Cat# [TA50011-100]). Left: Cell lysates from untransfected HEK293T cells; Right: Cell lysates from HEK293T cells transfected with RC219388 using transfection reagent MegaTran 2.0 (Cat# [TT210002]).



Coomassie blue staining of purified LVRN protein (Cat# [TP319388]). The protein was produced from HEK293T cells transfected with LVRN cDNA clone (Cat# RC219388) using MegaTran 2.0 (Cat# [TT210002]).