

## Product datasheet for RC219387

### SOX5 (NM\_178010) Human Tagged ORF Clone

#### Product data:

Product Type:	Expression Plasmids
Product Name:	SOX5 (NM_178010) Human Tagged ORF Clone
Tag:	Myc-DDK
Symbol:	SOX5
Synonyms:	L-SOX5; L-SOX5B; L-SOX5F; LAMSHF
Mammalian Cell Selection:	Neomycin
Vector:	pCMV6-Entry (PS100001)
E. coli Selection:	Kanamycin (25 ug/mL)
ORF Nucleotide Sequence:	>RC219387 representing NM_178010 Red=Cloning site Blue=ORF Green=Tags(s)

TTTTGTAATACGACTCACTATAGGGCGCCGGGAATTCGTCGACTGGATCCGGTACCGAGGAGATCTGCC  
GCC**CGATCGCC**

ATGCATGATGAAGTGGCAGCCACTGAACCTATCAGCTAAACCCAAGACCTCTGATGGCAAATCACCCA  
CATCACCCACCTCTCCCATATGCCAGCTCTGAGAATAAACAGTGGGCAGGCCCCCTCAAAGCCTCTGT  
CCCAGCAGCGTTAGCTAGTCCTCAGCCAGAGTTAGCACAATAGGTTACTTAAATGACCATGATGCTGTC  
ACCAAGGCAATCCAAGAAGCTCGGCAAAATGAAGGAGCAACTCCGACGGGAACAACAGGTGCTTGATGGGA  
AGGTGGCTGTTGTGAATAGTCTGGGTCTCAATAACTGCCGAACAGAAAAGGAAAAACAACACTGGAGAG  
TCTGACTCAGCAACTGGCAGTTAAACAGAATGAAGAAGGAAAATTTAGCCATGCAATGATGGATTTCAAT  
CTGAGTGGAGATTCTGATGGAAGTGTGGAGTCTCAGAGTCAAGAATTTATAGGGAATCCCGAGGGCGTG  
GTAGCAATGAACCCACATAAAGCGTCCAATGAATGCCTTCATGGTGTGGGCTAAAGATGAACGGAGAAA  
GATCCTTCAAGCCTTTCTGACATGCACAACTCCAACATCAGCAAGATATTGGGATCTCGCTGGAAGCT  
ATGACAAACCTAGAGAAACAGCCATATTATGAGGAGCAAGCCGTCTCAGCAAGCAGCACCTGGAGAAGT  
ACCCTGACTATAAGTACAAGCCAGGCCAAAGCGCACCTGCCTGGTGGATGGCAAAAAGCTGCGCATTGG  
TGAATAACAAGGCAATCATGCGCAACAGGCGCAGGAAATGCGGCAGTACTTCAATGTTGGCAACAAGCA  
CAGATCCCCATTGCCACTGCTGGTGTGTGTACCCTGGAGCCATGCCATGGCTGGGATGCCCTCCCCTC  
ACCTGCCCTCGGAGCACTCAAGCGTGTCTAGCAGCCAGAGCCTGGGATGCCTGTTATCCAGAGCACTTA  
CGGTGTGAAAGGAGAGGACCCACATATCAAGAAGAGATACAGGCCGAGGACATCAATGGAGAAATTTAT  
GATGAGTACGACGAGGAAGAGGATGATCCAGATGTAGATTATGGGAGTGACAGTAAAACCATATTGCAG  
GACAAGCCAAC

**ACGCGT**ACGCGGCCGCTCGAGCAGAACTCATCTCAGAAGAGGATCTGGCAGCAATGATATCCTGGATT  
ACAAGGATGACGACGATAAGGTTTAA



[View online >](#)



**Reconstitution Method:**

1. Centrifuge at 5,000xg for 5min.
2. Carefully open the tube and add 100ul of sterile water to dissolve the DNA.
3. Close the tube and incubate for 10 minutes at room temperature.
4. Briefly vortex the tube and then do a quick spin (less than 5000xg) to concentrate the liquid at the bottom.
5. Store the suspended plasmid at -20°C. The DNA is stable for at least one year from date of shipping when stored at -20°C.

**RefSeq:** [NM\\_178010.4](#)

**RefSeq Size:** 3095 bp

**RefSeq ORF:** 1134 bp

**Locus ID:** 6660

**UniProt ID:** [P35711](#)

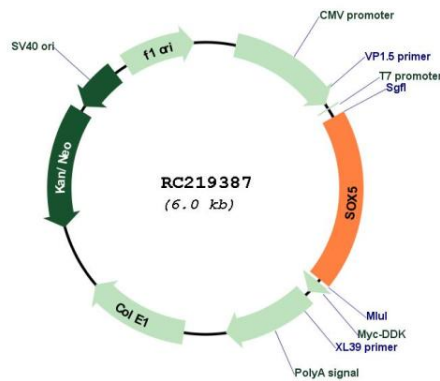
**Cytogenetics:** 12p12.1

**Protein Families:** Transcription Factors

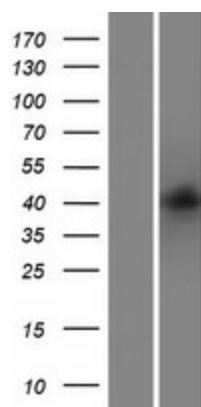
**MW:** 41.8 kDa

**Gene Summary:** This gene encodes a member of the SOX (SRY-related HMG-box) family of transcription factors involved in the regulation of embryonic development and in the determination of the cell fate. The encoded protein may act as a transcriptional regulator after forming a protein complex with other proteins. The encoded protein may play a role in chondrogenesis. A pseudogene of this gene is located on chromosome 8. Multiple transcript variants encoding distinct isoforms have been identified for this gene. [provided by RefSeq, Jul 2008]

### Product images:



Circular map for RC219387



Western blot validation of overexpression lysate (Cat# [LY406047]) using anti-DDK antibody (Cat# [TA50011-100]). Left: Cell lysates from untransfected HEK293T cells; Right: Cell lysates from HEK293T cells transfected with RC219387 using transfection reagent MegaTran 2.0 (Cat# [TT210002]).