

## Product datasheet for **RC219384**

### SLC38A8 (NM\_001080442) Human Tagged ORF Clone

#### Product data:

Product Type:	Expression Plasmids
Product Name:	SLC38A8 (NM_001080442) Human Tagged ORF Clone
Tag:	Myc-DDK
Symbol:	SLC38A8
Synonyms:	FVH2
Mammalian Cell Selection:	Neomycin
Vector:	pCMV6-Entry (PS100001)
E. coli Selection:	Kanamycin (25 ug/mL)



[View online »](#)

**ORF Nucleotide Sequence:**

>RC219384 representing NM\_001080442  
 Red=Cloning site Blue=ORF Green=Tags(s)

TTTTGTAATACGACTCACTATAGGGCGGCCGGAATTCGTCGACTGGATCCGGTACCGAGGAGATCTGCC  
 GCCGCGATCGCC

ATGGAGGGACAGACCCAGGAAGCAGGGGCCTTCCAGAAAAGCCTCACCTGCCACGGCTGCTGCCACTC  
 TGTCTCGATGGGCGCTGTCTTCATCCTCATGAAGTCCGCGCTGGGAGCTGGCCTGCTCAACTTCCCTG  
 GCCTTCTCCAAAGCGGGCGGAGTGGTCCCTGCCTTCTGGTGGAGCTGGTCTCGTTGGTCTTCTGATC  
 AGCGGGCTGGTACCTGGGCTATGCTGCTGTGTGAGGCTGCTTCTCCTCAACCTGCTCATGATCTCCGT  
 GGCTGTGTGGCCCTGCCATTGGGAAGCTGTGTGAGGCTGCTTCTCCTCAACCTGCTCATGATCTCCGT  
 GGCCTTCTCAGGGTGTGCGGGACCAGCTGGAGAAGCTGTGTGACTCCCTCCTGTCTGGCACCCCGCCC  
 GCCCGCAGCCGTGGTACGCAGACCAGCGCTTACCCTGCCCTGCTCTCCGTGCTGGTATCCTGCCCC  
 TGTCTGCCCGCGGGAGATCGCCTTCCAGAAATACACAAGCATCCTAGGCACTCTGGCTGCCTGTTACCT  
 GGCCTGGTATCACCCTGCACTACTACCTCTGGCCCCAGGGCCTCGTGGTGTGAGTCCCATCCTTACTG  
 AGCCCTGCCTCCTGGACCTCTGTGTTAGTGTCTTCCCCACCATCTGCTTCGGGTTTCAGTGTACAGAA  
 CTGCCCTCTCATCTACTGCAGCATGCGCAAACGGAGCCTCTCCCACTGGGCCCTGGTGTCTGTGCTGT  
 CTTGCTGGCCTGCTGCCTCATCTATTACTGACGGGGTTTATGGCTTCTGACTTTTGGGACAGAAGTT  
 TCTGCTGACGCTTGTATGCTCCTACCCAGGCAATGATATGGTATCATTGTGGCCCGGGTCTTTTGTG  
 TCTCCATCGTAACTGTCTACCCATCGTCTTCTGGGGAGGTGAGTGTGACGACTTCTGGAGGAG  
 GAGCTGCTGGGGGATGGGGCCAGCGCCCTGGCCGACCCCTCAGGGCTGTGGTCCGGATGCCGCTG  
 ACCATCCTGTGGTCCCGTACGCTCGCATGGCGTGTATGCTGACCTCAGCGAGATCGTCAGCA  
 TCACTCGGAGGCATCAGTTCCTTCTCATCTTCCAGTTTGTGCCTCATCTGTGCAATGGGTGT  
 CGAGCCTATAGGACCAAGAGTCAAGTGTGCTGGAGGTCTGGGAGTGGTCTCTGTGCTGGTCCGCACC  
 TTCATCTTTGGCAGAGCACGGCGCAGCGGTCTGGGAGATGTTT

ACGCGTACGCGGCCGCTCGAGCAGAACTCATCTCAGAAGAGGATCTGGCAGCAATGATATCCTGGATT  
 ACAAGGATGACGACGATAAGGTTTAA

**Protein Sequence:**

>RC219384 representing NM\_001080442  
 Red=Cloning site Green=Tags(s)

MEGQTPGSRGLPEKPHPATAAATLSSMGAVFILMKSALGAGLLNFPWAFSKAGGVVPAFLVELVSLVFLI  
 SGLVILGYAAAVSGQATYQGVVRGLCGPAIGKLCACFLNLLMISVAFLRVIGDQLEKLCDSLLSGTTP  
 APQPWYADQRFPLLSVLVILPLSAPREIAFQKYTSILGTLAACYLALVITVQYYLWPQGLVRESHPSL  
 SPASWTSVFSVFPTICFGFQCHEAAVSIYCSMRKRSLSHWALVSVLSLLACCLIIYSLTGVYGFLLTFGTEV  
 SADVLMSYPGNDMVIIIVARVLFVSIIVTYPIVFLGRSVMQDFWRRSCLGGWGPSALADPSGLWVRMPL  
 TILWVTVTLAMALFMPDLSEIVSIIGGISSFFIFIFPGLCLICAMGVEPIGPRVKCCLEVWGVVSVLVGT  
 FIFGQSTAAAVWEMF

TRTRPLEQKLISEEDLAANDILDYKDDDDKV

**Chromatograms:**

[https://cdn.origene.com/chromatograms/mk8022\\_a10.zip](https://cdn.origene.com/chromatograms/mk8022_a10.zip)

**Restriction Sites:**

SgfI-MluI

**Cloning Scheme:**


**ACCN:** NM\_001080442

**ORF Size:** 1305 bp

**OTI Disclaimer:** The molecular sequence of this clone aligns with the gene accession number as a point of reference only. However, individual transcript sequences of the same gene can differ through naturally occurring variations (e.g. polymorphisms), each with its own valid existence. This clone is substantially in agreement with the reference, but a complete review of all prevailing variants is recommended prior to use. [More info](#)

**OTI Annotation:** This clone was engineered to express the complete ORF with an expression tag. Expression varies depending on the nature of the gene.

**Components:** The ORF clone is ion-exchange column purified and shipped in a 2D barcoded Matrix tube containing 10ug of transfection-ready, dried plasmid DNA (reconstitute with 100 ul of water).

**Reconstitution Method:**

1. Centrifuge at 5,000xg for 5min.
2. Carefully open the tube and add 100ul of sterile water to dissolve the DNA.
3. Close the tube and incubate for 10 minutes at room temperature.
4. Briefly vortex the tube and then do a quick spin (less than 5000xg) to concentrate the liquid at the bottom.
5. Store the suspended plasmid at -20°C. The DNA is stable for at least one year from date of shipping when stored at -20°C.

**RefSeq:** [NM\\_001080442.3](#)

**RefSeq Size:** 1308 bp

**RefSeq ORF:** 1308 bp

**Locus ID:** 146167

**UniProt ID:** [A6NNN8](#)

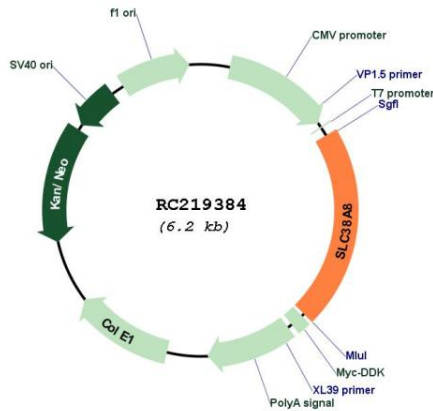
**Cytogenetics:** 16q23.3

**Protein Families:** Transmembrane

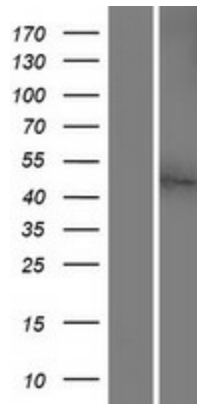
**MW:** 46.6 kDa

**Gene Summary:** This gene encodes a putative sodium-dependent amino-acid/proton antiporter. The protein has eleven transmembrane domains, an extracellular N-terminus and an intracellular C-terminal tail. The protein is a member of the SLC38 sodium-coupled neutral amino acid transporter family of proteins. Mutations in this gene result in foveal hypoplasia with or without optic nerve misrouting and/or anterior segment dysgenesis. [provided by RefSeq, May 2014]

**Product images:**



Circular map for RC219384



Western blot validation of overexpression lysate (Cat# [LY421659]) using anti-DDK antibody (Cat# [TA50011-100]). Left: Cell lysates from untransfected HEK293T cells; Right: Cell lysates from HEK293T cells transfected with RC219384 using transfection reagent MegaTran 2.0 (Cat# [TT210002]).