

## Product datasheet for **RC219377**

### **C14orf174 (SAMD15) (NM\_001010860) Human Tagged ORF Clone**

#### **Product data:**

|                           |  |
|---------------------------|--|
| Product Type:             | Expression Plasmids                                      |
| Product Name:             | C14orf174 (SAMD15) (NM_001010860) Human Tagged ORF Clone |
| Tag:                      | Myc-DDK  |
| Symbol:                   | C14orf174  |
| Synonyms:                 | C14orf174; FAM15A  |
| Mammalian Cell Selection: | Neomycin   |
| Vector:                   | pCMV6-Entry (PS100001)                                   |
| E. coli Selection:        | Kanamycin (25 ug/mL)                                     |



[View online »](#)

ORF Nucleotide  
Sequence:

>RC219377 representing NM\_001010860  
Red=Cloning site Blue=ORF Green=Tags(s)

TTTTGTAATACGACTCACTATAGGGCGGCCGGAATTCGTGACTGGATCCGGTACCGAGGAGATCTGCC  
GCCGCGATCGCC

ATGGCTGAAGTCCCGAGGATTATGATTCCGGCCAGATGAAGATGGAGAGCTGGAGCCTGAGAGGCCTG  
AACTGCCTGGACTTCATAAATTGTATGAAAATGCCGAACCAGACACCATGGCAAAGGCAGACTCGAAGCT  
ACCAGCAGAGATTTACCAAGAGCCACAGCCAGAGACCGAGGAAGAGGACTTCAAAGAGGGGGAGCCAGAC  
AGTGCTAAGAACGTGCAGCTGAAACCTGGCGGGACGTCCAGGAAGGAATTGCCAAGGAGTCCAAGAGAG  
ACGTACCAAGCGAAACTGAACCAGGGATACACCAAGAGGTAAAGTCGGAACATCCAGAGAGATGGGAGA  
GTTTTTCAAAGATTTGGAGGCCCTATGGATGAAACGCATAAAGAGTCAGACCTAGAGCCACCAGAGGAG  
GCTAAACCAAATGTTACAGAGGATGTGTTCTAGAGTCAGCTATGAAACAGATCCAGATCCAGTGCCAC  
CAACGGAACCATGTCTGAGTTTCGGGGCCACAGTCAGAGAGAGAAAATTTAGAATTACTAGAGGAGGA  
GACTGAACCGGGGTTCCAGAGGAATCACTTAGAGTGCAACATGAAGAGACAGGTCTAGAGCCTCCAGAG  
CAGACCAAAACAAGATTTTCCAAGTGAGAACTAGGAGAATCACTTGAAGAGACAGATCTTACGCCACCAA  
AGATGACCAAAACCAGAGACTCCAGAGGAGACACAAGAGAGTCAACTGAGAAGAAAAGGACAGAGCCACC  
CGAGCAGGCTAGACTGGAATTTCTGGAGAAGGAACCAAGAAAAGTCTAGTGAGGAGGCAGGTCTAGAGCCT  
CCAGAAGAGACTCAACCAGAGGTTCCAGAGGAGATGCAAAGAAAAGGCAACTGAGGAGAAAAGGACAGAAC  
TACCTGAGCGGACTAAACCAGACTTTCCAGACCACAAGCCAAGAAAAGTCTACTGATGAGAACGTTCTCTGA  
GCCACTAGAAGAGATCAAATTAGAGTTTCTGAGGAAGAATCAAGAAAAACAATGAGGAAAACAATTCTA  
GAACAATCAGAAATGATGAAACCAGAAAAGTCCAGAAGAGATAAGAAAAGTCAAATGAGAAAAAAAATCCAC  
AGCCACCAGAGGAGACTGGTCCAGTGTACCACAGGAGATCAACCACAAGTTGAAGAGAAAAACACAAC  
AAAGCCAACCTGAGAAAATTTCTAGAGTTACCAGATGAAACCAAAACCAAGGGAGACACATGTAGAATTTTCC  
AAGGAAGACAGGCCAGAACCAATAAAGTCTAAGTATTCTGTAGGAAACGATGAGCTAGAGCACCGTGAGC  
CTAAAAGAGGAAAGTTGTCACTAAGTGACAAAATTTAGAAAAGAATATTACGCATTAGGATCTCTCAGAGA  
AAGTGAAGAATCAATTGGTACACATTATGAGTTTTTGAACCACTCCAAAAATTGCTTAATGTCAGTGAA  
GAATGCTCATACTCAGATCCCTCAGAGTCTCAGACAGAATTAAGTGAGTTCGTTTCATGAAAAGGAAGTTG  
TAGATTTGTCCCAAGAGTTGAAGGAACGGGCTCTGAAGATGACGAAACCCAGCCAGAAAAGGGACTGA  
GTTACAATTTGAGCATCTTAATTGGGATCCAGAGGAAGTTGCAGAGTGGATTAGCCAGCTAGGCTTCCCT  
CAATACAAGGAGTGTATATCACAACTTCATCAGTGGCCGAAAACCTATTACGTCAACTGCTCAAACC  
TCCTCAGATGGGATAACAACTTTGAGGACATGAAGGCAATTTCTCGGCATACGAGGAGCTCCTGGA  
AATTGAAGAGCCATTATTCAAACGCTCCATCAGCCTTCCCTATAGGGATATTATCGGCTTATATTTAGAG  
CAAAAAGGTCATACTGGGATAAAATCTGATTCCTTGACTTTATCTGAATTTGTCAAAGCAGCAGGATTAC  
AGGATTATGCTCCAGAAAATACTGCCCTGAAGAGAATGAGGAATTACCTTGCACTGAACCA

ACGCGTACGCGGCCGCTCGAGCAGAACTCATCTCAGAAGAGGATCTGGCAGCAATGATATCCTGGATT  
ACAAGGATGACGACGATAAGGTTTAA



**Reconstitution Method:**

1. Centrifuge at 5,000xg for 5min.
2. Carefully open the tube and add 100ul of sterile water to dissolve the DNA.
3. Close the tube and incubate for 10 minutes at room temperature.
4. Briefly vortex the tube and then do a quick spin (less than 5000xg) to concentrate the liquid at the bottom.
5. Store the suspended plasmid at -20°C. The DNA is stable for at least one year from date of shipping when stored at -20°C.

**RefSeq:** [NM\\_001010860.2](#)

**RefSeq Size:** 2025 bp

**RefSeq ORF:** 2025 bp

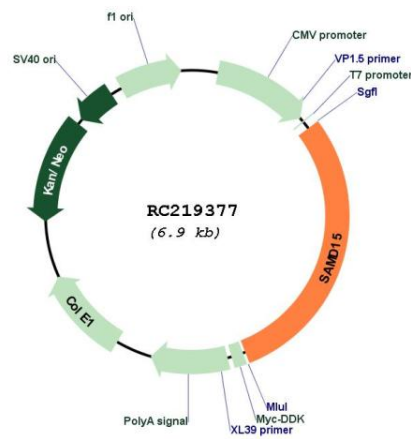
**Locus ID:** 161394

**UniProt ID:** [Q9P1V8](#)

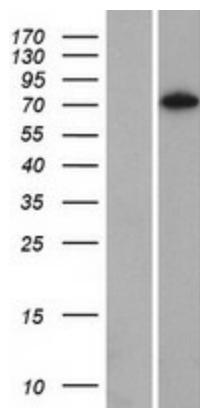
**Cytogenetics:** 14q24.3

**MW:** 77 kDa

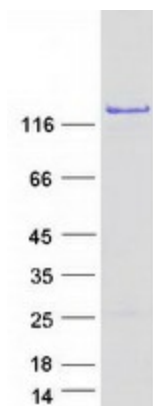
**Product images:**



Circular map for RC219377



Western blot validation of overexpression lysate (Cat# [LY423189]) using anti-DDK antibody (Cat# [TA50011-100]). Left: Cell lysates from untransfected HEK293T cells; Right: Cell lysates from HEK293T cells transfected with RC219377 using transfection reagent MegaTran 2.0 (Cat# [TT210002]).



Coomassie blue staining of purified SAMD15 protein (Cat# [TP319377]). The protein was produced from HEK293T cells transfected with SAMD15 cDNA clone (Cat# RC219377) using MegaTran 2.0 (Cat# [TT210002]).