

Product datasheet for **RC219375**

LCK (NM_005356) Human Tagged ORF Clone

Product data:

| | |
|---------------------------|--|
| Product Type: | Expression Plasmids |
| Product Name: | LCK (NM_005356) Human Tagged ORF Clone |
| Tag: | Myc-DDK |
| Symbol: | LCK |
| Synonyms: | IMD22; LSK; p56lck; pp58lck; YT16 |
| Mammalian Cell Selection: | Neomycin |
| Vector: | pCMV6-Entry (PS100001) |
| E. coli Selection: | Kanamycin (25 ug/mL) |



[View online »](#)

ORF Nucleotide Sequence:

>RG219375 representing NM_005356
 Red=Cloning site Blue=ORF Green=Tags(s)

TTTTGTAATACGACTCACTATAGGGCGGCCGGAATTCGTCGACTGGATCCGGTACCGAGGAGATCTGCC
 GCC**GCGATCGCC**

ATGGGCTGTGGCTGCAGCTCACACCCGGAAGATGACTGGATGGAAAACATCGATGTGTGTGAGAACTGCC
 ATTATCCCATAGTCCCACCTGGATGGCAAGGGCAGCTGCTCATCCGAAATGGCTCTGAGGTGCGGGACCC
 ACTGGTTACCTACGAAGGCTCCAATCCGCCGGCTTCCCCACTGCAAGACAACCTGGTTATCGCTCTGCAC
 AGCTATGAGCCCTCTCACGACGGAGATCTGGGCTTTGAGAAGGGGGAACAGCTCCGCATCTGGAGCAGA
 GCGGCGAGTGGTGAAGGCGCAGTCCCTGACCACGGGCCAGGAAGGCTTCATCCCCTTCAATTTTGTGGC
 CAAAGCGAACAGCCTGGAGCCCGAACCTGGTTCTTCAAGAACCTGAGCCGCAAGGACGCGGAGCGGCAG
 CTCTGGCGCCCGGAACACTCACGGCTCCTTCTCATCCGGGAGAGCGAGAGCACCGGGGATCGTTTT
 CACTGTCGGTCCGGGACTTCGACCAGAACCAGGGAGAGGTGGTGAACATTACAAGATCCGTAATCTGGA
 CAACGGTGGCTTCTACATCTCCCCTCGAATCACTTTTCCGGCCCTGCATGAACTGGTCCGCCATTACACC
 AATGCTTCAGATGGGCTGTGCACACGGTTGAGCCGCCCTGCCAGACCCAGAAGCCCCAGAAGCCGTGGT
 GGGAGGACGAGTGGGAGGTTCCCAGGGAGACGCTGAAGCTGGTGGAGCGGCTGGGGGCTGGACAGTTCGG
 GGAGGTGTGGATGGGGTACTACAACGGGCACACGAAGGTGGCGGTGAAGAGCCTGAAGCAGGGCAGCATG
 TCCCCGGACGCCTTCTGGCCGAGGCCAACCTCATGAAGCAGCTGCAACACCAGCGGCTGGTTCCGGCTCT
 ACGCTGTGGTCACCCAGGAGCCCATCTACATCACTGAATACATGGAGAATGGGAGTCTAGTGGATTT
 TCTCAAGACCCCTCAGGCATCAAGTTGACCATCAACAACTCCTGGACATGGCAGCCCAAATTGCAGAA
 GGCATGGCATTATTGAAGAGCGGAATTATATTCATCGTGACCTTCGGGCTGCCAACATTCTGGTGTCTG
 ACACCCTGAGCTGCAAGATTGCAGACTTTGGCCTAGCACGCCTCATTGAGGACAACGAGTACACAGCCAG
 GGAGGGGCCAAGTTTCCCATTAAGTGGACAGCGCCAGAAGCCATTAACTACGGGACATTCACCATCAAG
 TCAGATGTGTGGTCTTTTGGATCTGTGACGAAAATTGTACCACAGCGCCGCATCCCTTACCCAGGGA
 TGACCAACCCGGAGGTGATTCAGAACCTGGAGCGAGGCTACCGCATGGTGCGCCCTGACAACCTGTCCAGA
 GGAGCTGTACCAACTCATGAGGCTGTGCTGGAAGGAGCGCCAGAGGACCGGCCACCTTTGACTACCTG
 CGCAGTGTGCTGGAGGACTTCTTACGGCCACAGAGGGCCAGTACCAGCCTCAGCCT

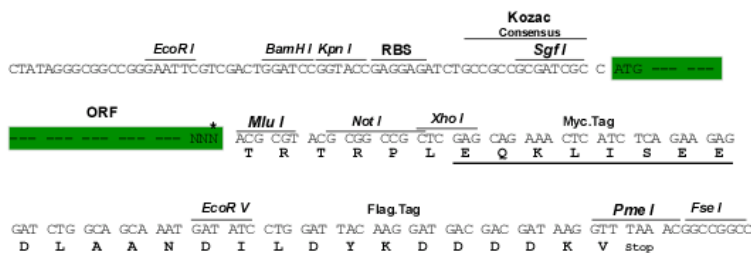
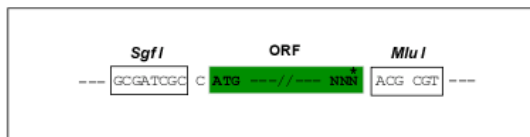
ACGCGTACGCGGCCGCTCGAG - GFP Tag - GTTTAA

Chromatograms:
Restriction Sites:
Cloning Scheme:

https://cdn.origene.com/chromatograms/mk6104_f03.zip

Sgfl-MluI

Cloning sites used for ORF Shuttling:



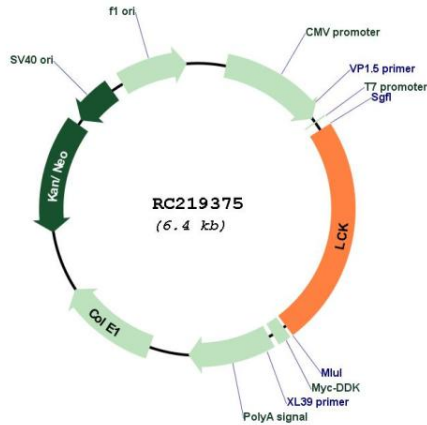
* The last codon before the Stop codon of the ORF

| | |
|-------------------------------|--|
| ACCN: | NM_005356 |
| ORF Size: | 1527 bp |
| OTI Disclaimer: | <p>Due to the inherent nature of this plasmid, standard methods to replicate additional amounts of DNA in E. coli are highly likely to result in mutations and/or rearrangements. Therefore, OriGene does not guarantee the capability to replicate this plasmid DNA. Additional amounts of DNA can be purchased from OriGene with batch-specific, full-sequence verification at a reduced cost. Please contact our customer care team at custsupport@origene.com or by calling 301.340.3188 option 3 for pricing and delivery.</p> <p>The molecular sequence of this clone aligns with the gene accession number as a point of reference only. However, individual transcript sequences of the same gene can differ through naturally occurring variations (e.g. polymorphisms), each with its own valid existence. This clone is substantially in agreement with the reference, but a complete review of all prevailing variants is recommended prior to use. More info</p> |
| OTI Annotation: | This clone was engineered to express the complete ORF with an expression tag. Expression varies depending on the nature of the gene. |
| Components: | The ORF clone is ion-exchange column purified and shipped in a 2D barcoded Matrix tube containing 10ug of transfection-ready, dried plasmid DNA (reconstitute with 100 ul of water). |
| Reconstitution Method: | <ol style="list-style-type: none">1. Centrifuge at 5,000xg for 5min.2. Carefully open the tube and add 100ul of sterile water to dissolve the DNA.3. Close the tube and incubate for 10 minutes at room temperature.4. Briefly vortex the tube and then do a quick spin (less than 5000xg) to concentrate the liquid at the bottom.5. Store the suspended plasmid at -20°C. The DNA is stable for at least one year from date of shipping when stored at -20°C. |
| RefSeq: | NM_005356.5 |
| RefSeq Size: | 2032 bp |
| RefSeq ORF: | 1530 bp |
| Locus ID: | 3932 |
| UniProt ID: | P06239 |
| Cytogenetics: | 1p35.2 |
| Domains: | pkinase, SH2, TyrKc, SH3, S_TKc |
| Protein Families: | Druggable Genome, Protein Kinase, Stem cell - Pluripotency |
| Protein Pathways: | Natural killer cell mediated cytotoxicity, Primary immunodeficiency, T cell receptor signaling pathway |
| MW: | 57.8 kDa |

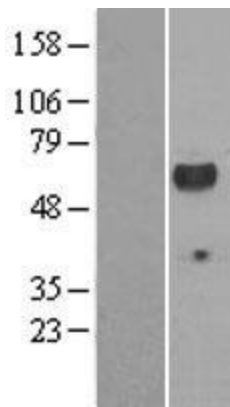
Gene Summary:

This gene is a member of the Src family of protein tyrosine kinases (PTKs). The encoded protein is a key signaling molecule in the selection and maturation of developing T-cells. It contains N-terminal sites for myristylation and palmylation, a PTK domain, and SH2 and SH3 domains which are involved in mediating protein-protein interactions with phosphotyrosine-containing and proline-rich motifs, respectively. The protein localizes to the plasma membrane and pericentrosomal vesicles, and binds to cell surface receptors, including CD4 and CD8, and other signaling molecules. Multiple alternatively spliced variants encoding different isoforms have been described. [provided by RefSeq, Aug 2016]

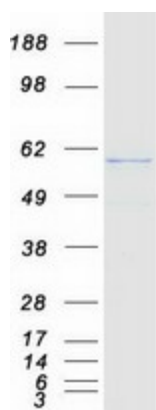
Product images:



Circular map for RC219375



Western blot validation of overexpression lysate (Cat# [LY420808]) using anti-DDK antibody (Cat# [TA50011-100]). Left: Cell lysates from untransfected HEK293T cells; Right: Cell lysates from HEK293T cells transfected with [RC219430] using transfection reagent MegaTran 2.0 (Cat# [TT210002]).



Coomassie blue staining of purified LCK protein (Cat# [TP319375]). The protein was produced from HEK293T cells transfected with LCK cDNA clone (Cat# RC219375) using MegaTran 2.0 (Cat# [TT210002]).