

## Product datasheet for RC219373

### STK19 (NM\_032454) Human Tagged ORF Clone

#### Product data:

Product Type:	Expression Plasmids
Product Name:	STK19 (NM_032454) Human Tagged ORF Clone
Tag:	Myc-DDK
Symbol:	STK19
Synonyms:	D6S60; D6S60E; G11; HLA-RP1; RP1
Mammalian Cell Selection:	Neomycin
Vector:	pCMV6-Entry (PS100001)
E. coli Selection:	Kanamycin (25 ug/mL)
ORF Nucleotide Sequence:	>RC219373 representing NM_032454 Red=Cloning site Blue=ORF Green=Tags(s)

TTTTGTAATACGACTCACTATAGGGCGGCCGGAATTCGTCGACTGGATCCGGTACCGAGGAGATCTGCC  
GCC**CGATCGCC**

ATGCAAAAGTGGTTTTCTGCTTTCGATGATGCAATCATTACGCGACAGTGGCGGGCAAACCCCTCCCGGG  
GCGGGGGAGGTGTGAGCTTCACGAAGGAGGTTGACACCAACGTGGCCACCGGCCCCCTCCACGCCGCCA  
ACGAGTCCCCGGGCGTGCCTGGAGGGAGCCAATCCGCGGCCGGCGTGGGCCCCGGCTGGCGGA  
GGTGATGCTGGAGGACGCCCGGGGAGACCGTACGTCACTGCTCTGCGCCGGAAGACCCTATTTTCAGT  
TCTCTTCCCTCCATTCTACCCCTTCCCGGTACCATAAAATCCCGGGATATGAGCTGGAAGAGGCATCA  
CCTGATCCCGGAGACCTTGGAGTTAAGAGGCGCGGAAGCGAGGGCCTGTGGAGTCGGATCCTCTTCGG  
GGTGAGCCAGGGTCGGCGCGCGCGCTGTCTCAGAACTCATGCAGCTGTTCCCGCGAGGCCTGTTTGAGG  
ACGCGCTGCCGCCATCGTGTGAGGAGCCAGGTGTACAGCCTTGTGCCTGACAGGACCGTGGCCGACCG  
GCAGCTGAAGGAGCTTCAAGAGCAGGGGAGATCAGAAATCGTCCAGCTGGGCTTCGACTTGGATGCCAT  
GGAATTATCTTCACTGAGGACTACAGGACCAGAGTATGTGACTGTGTCTCAAGGCTGTGATGGCCGAC  
CGTATGCTGGGGCAGTGCAGAAATTTCTAGCTTCACTTCCAGCCTGTGGGACCTTAGTTTCCAGCA  
GGACCAAAATGACACAGACCTTTGGCTTCAGGGACTCAGAAATCACGCATCTGGTGAATGCTGGAGTCCCT  
ACCGTCCGAGATGCTGGGAGCTGGTGGCTAGCTGTGCCTGGAGCTGGGAGATTCAAGTACTTTGTTA  
AAGGGCGCCAGGCTGTCTTAGCATGGTCCGGAAGGCAAAGTACCGGAACTGCTCTATCAGAGCTCCT  
GGGCCGCGGGCCCTGTGCTGGTGCGGCTTGGCCTCACCTACCATGTGCACGACCTCATTGGGGCCAG  
CTAGTGGACTGCATCTCTACCACTTCAGGAACCTCCTCCGCTGCCAGAGACA

**ACGCGT**ACGCGGCCGCTCGAGCAGAACTCATCTCAGAAGAGGATCTGGCAGCAAATGATATCCTGGATT  
ACAAGGATGACGACGATAAGGTTAA



[View online >](#)

**Protein Sequence:** >RC219373 representing NM\_032454  
Red=Cloning site Green=Tags(s)

MQKWFSAFDDAI IQRQWRANPSRGGGGVSFTKEVDTNVATGAPRRQRPVGRACPWREPIRGRRGARPGG  
 GDAGGTPGETVRHCSAPEDPIFRFSSLHSYFPFGTIKSRDMSWKRHHLIPETFGVKRRRKRGPVESDPLR  
 GEPGSARAASVSELMQLFPRGLFEDALPPIVLRSSQVYSLVPDRTVADRQLKELQEQGEIRIVQLGFDLDAH  
 GIIFTEDYRTRVCDVLKACDGRPYAGAVQKFLASVLPACGDL SFQQDQMTQTFGFRDSEI THLVNAGVL  
 TVRDAGSWLAVPGAGRF IKYFVKGRQAVLSMVRKAKYRELLSELLGRRAPVVVRLGLTYHVHDLIGAQ  
 LVDCISTTSGTLLRRLPET

TRTRPLEQKLISEEDLAANDILDYKDDDDKV

**Chromatograms:** [https://cdn.origene.com/chromatograms/mk8011\\_d03.zip](https://cdn.origene.com/chromatograms/mk8011_d03.zip)

**Restriction Sites:** SgfI-MluI

**Cloning Scheme:**



**ACCN:** NM\_032454

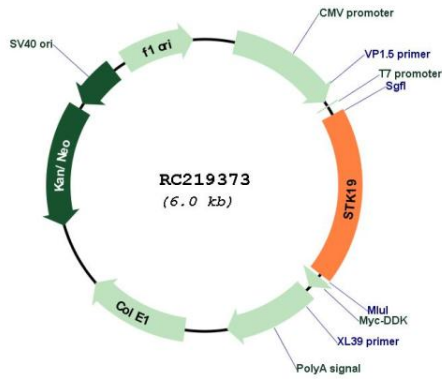
**ORF Size:** 1104 bp

**OTI Disclaimer:** Due to the inherent nature of this plasmid, standard methods to replicate additional amounts of DNA in E. coli are highly likely to result in mutations and/or rearrangements. Therefore, OriGene does not guarantee the capability to replicate this plasmid DNA. Additional amounts of DNA can be purchased from OriGene with batch-specific, full-sequence verification at a reduced cost. Please contact our customer care team at [custsupport@origene.com](mailto:custsupport@origene.com) or by calling 301.340.3188 option 3 for pricing and delivery.

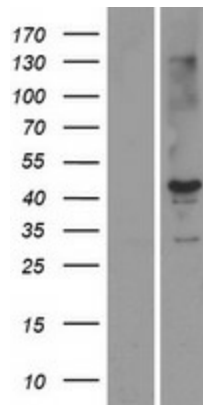
The molecular sequence of this clone aligns with the gene accession number as a point of reference only. However, individual transcript sequences of the same gene can differ through naturally occurring variations (e.g. polymorphisms), each with its own valid existence. This clone is substantially in agreement with the reference, but a complete review of all prevailing variants is recommended prior to use. [More info](#)

<b>OTI Annotation:</b>	This clone was engineered to express the complete ORF with an expression tag. Expression varies depending on the nature of the gene.
<b>Components:</b>	The ORF clone is ion-exchange column purified and shipped in a 2D barcoded Matrix tube containing 10ug of transfection-ready, dried plasmid DNA (reconstitute with 100 ul of water).
<b>Reconstitution Method:</b>	<ol style="list-style-type: none"><li>1. Centrifuge at 5,000xg for 5min.</li><li>2. Carefully open the tube and add 100ul of sterile water to dissolve the DNA.</li><li>3. Close the tube and incubate for 10 minutes at room temperature.</li><li>4. Briefly vortex the tube and then do a quick spin (less than 5000xg) to concentrate the liquid at the bottom.</li><li>5. Store the suspended plasmid at -20°C. The DNA is stable for at least one year from date of shipping when stored at -20°C.</li></ol>
<b>RefSeq:</b>	<a href="#">NM_032454.1</a> , <a href="#">NP_115830.1</a>
<b>RefSeq Size:</b>	1632 bp
<b>RefSeq ORF:</b>	1107 bp
<b>Locus ID:</b>	8859
<b>UniProt ID:</b>	<a href="#">P49842</a>
<b>Cytogenetics:</b>	6p21.33
<b>Protein Families:</b>	Druggable Genome, Protein Kinase
<b>MW:</b>	40.7 kDa
<b>Gene Summary:</b>	This gene encodes a serine/threonine kinase which localizes predominantly to the nucleus. Its specific function is unknown; it is possible that phosphorylation of this protein is involved in transcriptional regulation. This gene localizes to the major histocompatibility complex (MHC) class III region on chromosome 6 and expresses two transcript variants. [provided by RefSeq, Jul 2008]

Product images:



Circular map for RC219373



Western blot validation of overexpression lysate (Cat# [LY410091]) using anti-DDK antibody (Cat# [TA50011-100]). Left: Cell lysates from untransfected HEK293T cells; Right: Cell lysates from HEK293T cells transfected with RC219373 using transfection reagent MegaTran 2.0 (Cat# [TT210002]).