

Product datasheet for RC219372

PRSS57 (NM_214710) Human Tagged ORF Clone

Product data:

Product Type:	Expression Plasmids
Product Name:	PRSS57 (NM_214710) Human Tagged ORF Clone
Tag:	Myc-DDK
Symbol:	PRSS57
Synonyms:	NSP4; PRSSL1; UNQ782
Mammalian Cell Selection:	Neomycin
Vector:	pCMV6-Entry (PS100001)
E. coli Selection:	Kanamycin (25 ug/mL)
ORF Nucleotide Sequence:	>RC219372 representing NM_214710. Blue=ORF Red=Cloning site Green=Tag(s)

```
GCTCGTTTGTGAAACCGTCAGAATTTGTAAATACGACTACTATAGGGCGCCGGGAATTCGTCGACTG
GATCCGGTACCGAGGAGATCTGCCGCCGCGATCGCC
ATGGGGCTCGGGTTGAGGGGCTGGGGACGTCCTCTGCTGACTGTGGCCACCGCCCTGATGCTGCCCGTG
AAGCCCCCGCAGGCTCCTGGGGGGCCAGATCATCGGGGGCCACGAGGTGACCCCCACTCCAGGCC
TACATGGCATCCGTGCGCTTCGGGGGCAACATCACTGCGGAGGCTTCCTGCTGCGAGCCCGCTGGGTG
GTCTCGGCCGCCACTGCTTCAGCCACAGAGACCTCCGACTGGCCTGGTGGTGTGGGCGCCACGTC
CTGAGTACTGCGGAGCCACCCAGCAGGTGTTGGCATCGATGCTCTACCACACACCCCGACTACCAC
CCCATGACCCACGCCAACGACATCTGCCTGCTGCGGCTGAACGGCTCTGCTGTCCCTGGGCCCTGCAGTG
GGGCTGCTGAGGCTGCCAGGGAGAAGGGCCAGGCCCCACAGCGGGGACACGGTGCCGGGTGGCTGGC
TGGGGCTTCGTGTCTGACTTTGAGGAGCTGCCGCTGGACTGATGGAGGCCAAGGTCCGAGTGTGGAC
CCGGACGTCTGCAACAGCTCCTGGAAGGGCCACCTGACACTTACCATGCTCTGCACCCGAGTGGGGAC
AGCCACAGACGGGGCTTCTGCTCGGCCGACTCCGGAGGGCCCCTGGTGTGCAGGAACCGGGCTCACGGC
CTCGTTTCCTTCTCGGGCCTCTGGTGGCGGACCCCAAGACCCCGACGTGTACACGCAGGTGTCCGCC
TTTGTGGCCTGGATCTGGGACGTGGTTCGGCGGAGCAGTCCCCAGCCCGGCCCTGCCTGGGACCAC
AGGCCCCAGGAGAAGCCGCC
AGCGGACCGACGCGTACGCGGCCGCTCGAGCAGAACTCATCTCAGAAGAGGATCTGGCAGCAAATGAT
ATCCTGGATTACAAGGATGACGACGATAAGGTTTAA
```



[View online »](#)

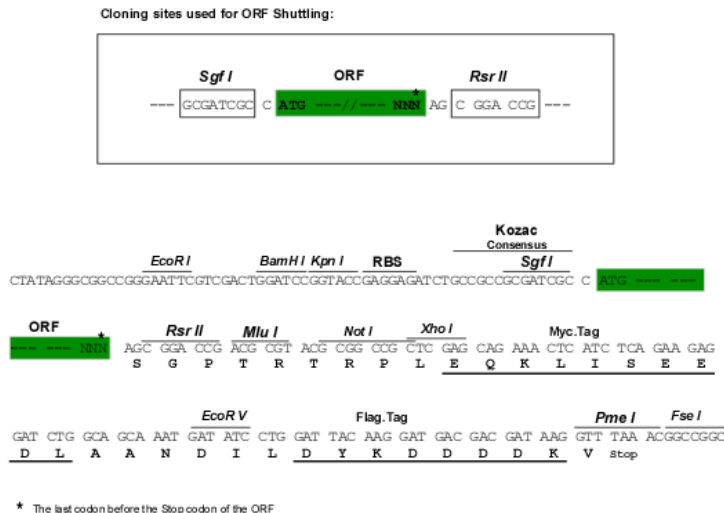
Protein Sequence: >Peptide sequence encoded by RC219372
 Blue=ORF Red=Cloning site Green=Tag(s)

MGLGLRGWGRPLLTVATALMLPVKPPAGSWGAIIGGHEVTPHSRPMASVRFGGQHHCGGFLLRARWV
 VSAAHCFSHRDLRTGLVVLGAHVLSTAEPTQQVFGIDALTTHPDYHPMTHANDICLLRLNGSAVLGPAV
 GLLRLPGRRARPPPTAGTRCRVAGWGFVSDFEELPPGLEAKVRVLDPVCNSSWKGHLLTMLCTRSGD
 SHRRGFCASDSGGPLVCRNRAHGLVSFSGLWCGDPKTPDVYTTQVSAFVAWIWDVVRSSPQGPLPGTT
 RPPGEAA
 SGPTRTRPLEQKLI SEEDLAANDILDYKDDDDKV

Chromatograms: https://cdn.origene.com/chromatograms/mk8014_d11.zip

Restriction Sites: SgfI-RsrII

Cloning Scheme:



ACCN: NM_214710

ORF Size: 849 bp

OTI Disclaimer: The molecular sequence of this clone aligns with the gene accession number as a point of reference only. However, individual transcript sequences of the same gene can differ through naturally occurring variations (e.g. polymorphisms), each with its own valid existence. This clone is substantially in agreement with the reference, but a complete review of all prevailing variants is recommended prior to use. [More info](#)

OTI Annotation: This clone was engineered to express the complete ORF with an expression tag. Expression varies depending on the nature of the gene.

Components: The ORF clone is ion-exchange column purified and shipped in a 2D barcoded Matrix tube containing 10ug of transfection-ready, dried plasmid DNA (reconstitute with 100 ul of water).

Reconstitution Method:

1. Centrifuge at 5,000xg for 5min.
2. Carefully open the tube and add 100ul of sterile water to dissolve the DNA.
3. Close the tube and incubate for 10 minutes at room temperature.
4. Briefly vortex the tube and then do a quick spin (less than 5000xg) to concentrate the liquid at the bottom.
5. Store the suspended plasmid at -20°C. The DNA is stable for at least one year from date of shipping when stored at -20°C.

RefSeq: [NM_214710.4](#), [NP_999875.1](#)

RefSeq Size: 1114 bp

RefSeq ORF: 852 bp

Locus ID: 400668

UniProt ID: [Q6UWY2](#)

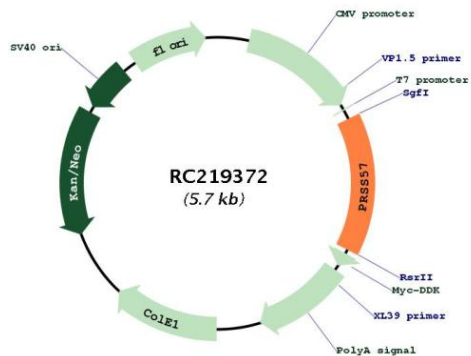
Cytogenetics: 19p13.3

Protein Families: Protease

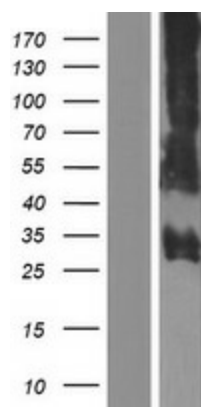
MW: 30.3 kDa

Gene Summary: This gene encodes an arginine-specific serine protease and member of the peptidase S1 family of proteins. The encoded protein may undergo proteolytic activation before storage in azurophil granules, in neutrophil cells of the immune system. Following neutrophil activation, the protease is released into the pericellular environment, where it may play a role in defense against microbial pathogens. [provided by RefSeq, Jul 2016]

Product images:



Circular map for RC219372



Western blot validation of overexpression lysate (Cat# [LY403748]) using anti-DDK antibody (Cat# [TA50011-100]). Left: Cell lysates from untransfected HEK293T cells; Right: Cell lysates from HEK293T cells transfected with RC219372 using transfection reagent MegaTran 2.0 (Cat# [TT210002]).