

Product datasheet for **RC219370**

MAP3K19 (NM_001018046) Human Tagged ORF Clone

Product data:

Product Type:	Expression Plasmids
Product Name:	MAP3K19 (NM_001018046) Human Tagged ORF Clone
Tag:	Myc-DDK
Symbol:	MAP3K19
Synonyms:	RCK; YSK4
Mammalian Cell Selection:	Neomycin
Vector:	pCMV6-Entry (PS100001)
E. coli Selection:	Kanamycin (25 ug/mL)



[View online »](#)

ORF Nucleotide Sequence:

>RC219370 representing NM_001018046
 Red=Cloning site Blue=ORF Green=Tags(s)

TTTTGTAATACGACTCACTATAGGGCGGCCGGGAATTCGTCGACTGGATCCGGTACCGAGGAGATCTGCC
 GCC**CGCATCGCC**

ATGAGTTCATGCCAAAACCAGAAAGACATGCTGAGTCATTGCTTGACATTTGTCATGATACAAACTCTT
 CTCCAAGTATTTGATGACAGTTACCAAAAATCAAACATCATCTTGCAAAGCATCAGCAGAAGTGAGGA
 GTTCGACCAAGATGGTGACTGCAGTCATTCCACTGGTTAATGAAGAAGAAGATCCAGTGGTGGTAGA
 CAGGACTGGCAACCCAGGACAGAAGGTGTTGAGATCACTGTAACCTTTTCCAAGAGATGTCAGTCTCCCC
 AAGAAATGAGCCAAGAAGACTTAAAAGAAAAGAATCTGATAAACTCATCGCTTCAAGAATGGGCACAAGC
 ACATGCAGTTTCTCATCAAATGAAATAGAAACGGTGGAGCTCAGGAAAAAGAAGCTGACCATGCGGCC
 TTAGTTTTGCAAAAAGAGGAAAGTTCCAGGGAGCTCTGCAATGTGAACCTGGGCTTTTTGCTACCAAGAT
 CTTGTTTGAAGTGAACATTTCCAAGTCTGTAAACAGAGAAGATGCTCCTATTTTCTGAAGGAGCAGCA
 AAGAAAATCTGAAGAGTTTTCGACCTCTCATATGAAGTACAGTGGCCGAAGCATCAAGAGGCATAGTAGT
 GGGCTCAGGATATATGACAGGGAGGAGAAATTTCTCATCTCAAATGAAAAGAAGATTTTTCTGAAAATA
 GTTTAAAGTCTGAAGAACCTATCCTATGGACCAAGGGTGAGATCTTGGAAAGGGAGCCTACGGCACAGT
 ATACTGTGGTCTCACTAGTCAAGGACAGCTAATAGCTGTAAAACAGGTGGCTTTGGATACCTCTAATAAA
 TTAGCTGCTGAAAAGGAATACCGGAAACTACAGGAAGAAGTAGATTTGCTCAAAGCACTGAAACATGTCA
 ACATTGTGGCCTATTTGGGGACATGCTTGAAGAGAAGTGTGAGCATTTCATGGAGTTTGTCTCTGG
 TGGCTCAATCTAGTATTATAAACCGTTTTGGCCATTGCTGAGATGGTGTCTGTAATATACGAAA
 CAAATACTCAAGGTGTGCTTATCTCCATGAGAACTGTGTGGTACATCGCGATATCAAAGGAAATAATG
 TTATGCTCATGCCAACTGGAATAATAAAGCTGATTGACTTTGGCTGTGCCAGCGCTTTGGCTGGCAGG
 TTTAAATGGCACCCACAGTGACATGCTTAAGTCCATGCATGGGACTCCATATTGGATGGCCCGAGAAGTC
 ATCAATGAGTCTGGCTATGGACGAAATCAGATATCTGGAGCATTGGTTGTACTGTGTTGAGATGGCTA
 CAGGGAAGCCTCCACTGGCTTCCATGGACAGGATGGCCGCCATGTTTACATCGGAGCACACCGAGGGCT
 GATGCCTCCTTACCAGACCACTTCTCAGAAAATGCAGCAGACTTTGTGCGCATGTGCTGACCAGGGAC
 CAGCATGAGCGACCTTCTGCTCTCCAGCTCTGAAGCACTCCTTCTTGGAGAGAAGTCAC

ACGCGTACGCGGCCGCTCGAGCAGAAACTCATCTCAGAAGAGGATCTGGCAGCAAATGATATCTGGATT
 ACAAGGATGACGACGATAAGGTTTAA

Protein Sequence:

>RC219370 representing NM_001018046
 Red=Cloning site Green=Tags(s)

MSSMPKPERHAESLLDICHDTNSSPTDLMVTKNQNIILQSI SRSEEFDQDGDSCSHSTLVNEEDPSSGGR
 QDWQPRTEGVEITVTFPRDVSPPEMSQEDLKEKNL INSSLQEWQAHAHVSHPNIEITVELRKKKL TMRP
 LVLQKEESSREL CNVNLGFLLRSCLELNISKSVTREDAPHFLKEQQRKSEEFSTSHMKYSGRSIKRHSS
 GLRIYDREEKFLISNEKKIFSENSLKSEEPILWTKGEILGKGAYGTVYCGLTSSQQLIAVKQVALDTSNK
 LAAEKEYRKLQEEVDLLKALKHVNI VAYLGTCLQENTVSIFMEFVPGGSISSIINRFGLPEMVFCKYTK
 QILQGVAYLHENCVVHRDIKGNVMLMPTGI IKLIDFGCARRLAWAGLNGTHSDMLKSMHGTPYWMapev
 INESGYGRKSDIWSIGCTVFEMATGKPLASMDRMAAMFYIGAHRGLMPPLPDHFSENAADFVRMCLTRD
 QHERPSALQLLKHSFLERSH

TRTRPLEQKLISEEDLAANDILDYKDDDDKV

Chromatograms:

https://cdn.origene.com/chromatograms/mk8004_f12.zip

Restriction Sites:

SgfI-MluI

Cloning Scheme:


ACCN: NM_001018046

ORF Size: 1530 bp

OTI Disclaimer: The molecular sequence of this clone aligns with the gene accession number as a point of reference only. However, individual transcript sequences of the same gene can differ through naturally occurring variations (e.g. polymorphisms), each with its own valid existence. This clone is substantially in agreement with the reference, but a complete review of all prevailing variants is recommended prior to use. [More info](#)

OTI Annotation: This clone was engineered to express the complete ORF with an expression tag. Expression varies depending on the nature of the gene.

Components: The ORF clone is ion-exchange column purified and shipped in a 2D barcoded Matrix tube containing 10ug of transfection-ready, dried plasmid DNA (reconstitute with 100 ul of water).

- Reconstitution Method:**
1. Centrifuge at 5,000xg for 5min.
 2. Carefully open the tube and add 100ul of sterile water to dissolve the DNA.
 3. Close the tube and incubate for 10 minutes at room temperature.
 4. Briefly vortex the tube and then do a quick spin (less than 5000xg) to concentrate the liquid at the bottom.
 5. Store the suspended plasmid at -20°C. The DNA is stable for at least one year from date of shipping when stored at -20°C.

Note: Plasmids are not sterile. For experiments where strict sterility is required, filtration with 0.22um filter is required.

RefSeq: [NM_001018046.3](#)

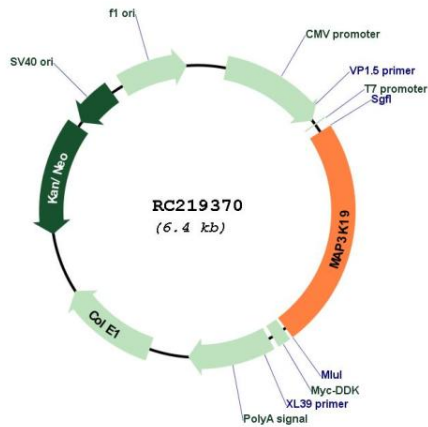
RefSeq Size: 1711 bp

RefSeq ORF: 1533 bp

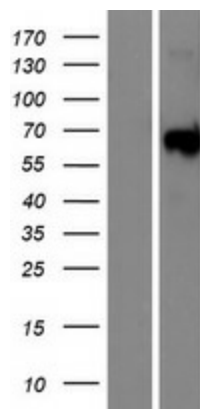
Locus ID: 80122

UniProt ID: [Q56UN5](#)
Cytogenetics: 2q21.3
Protein Families: Druggable Genome, Protein Kinase
MW: 57.5 kDa

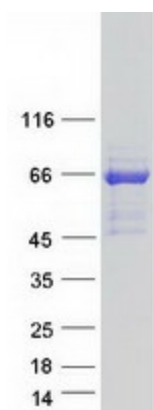
Product images:



Circular map for RC219370



Western blot validation of overexpression lysate (Cat# [LY422703]) using anti-DDK antibody (Cat# [TA50011-100]). Left: Cell lysates from untransfected HEK293T cells; Right: Cell lysates from HEK293T cells transfected with RC219370 using transfection reagent MegaTran 2.0 (Cat# [TT210002]).



Coomassie blue staining of purified MAP3K19 protein (Cat# [TP319370]). The protein was produced from HEK293T cells transfected with MAP3K19 cDNA clone (Cat# RC219370) using MegaTran 2.0 (Cat# [TT210002]).