

## Product datasheet for RC219360

### MRGPRX4 (NM\_054032) Human Tagged ORF Clone

#### Product data:

Product Type:	Expression Plasmids
Product Name:	MRGPRX4 (NM_054032) Human Tagged ORF Clone
Tag:	Myc-DDK
Symbol:	MRGPRX4
Synonyms:	GPCR; MRGX4; SNSR6
Mammalian Cell Selection:	Neomycin
Vector:	pCMV6-Entry (PS100001)
E. coli Selection:	Kanamycin (25 ug/mL)
ORF Nucleotide Sequence:	>RC219360 representing NM_054032 Red=Cloning site Blue=ORF Green=Tags(s)

TTTTGTAATACGACTCACTATAGGGCGCCGGGAATTCGTCGACTGGATCCGGTACCGAGGAGATCTGCC  
GCC**CGGATCGCC**

ATGGATCCAACCGTCCCAGTCTTCGGTACAAAACCTGACACCAATCAACGGACGTGAGGAGACTCCTTGCT  
ACAATCAGACCCTGAGCTTCACGGTGTGACGTGCATCATTTCCCTTGTTCGGACTGACAGGAAACGCGGT  
TGTGCTCTGGCTCCTGGGCTACCGCATGCGCAGGAACGCTGTCTCCATCTACATCCTCAACCTGGCCGCA  
GCAGACTTCTCTCCTCAGCTTCCAGATTATACGTTTCGCCATTACGCCTCATCAATATCAGCCATCTCA  
TCCGAAAATCCTCGTTTCTGTGATGACCTTTCCCTACTTTACAGGCCTGAGTATGCTGAGCGCCATCAG  
CACCGAGCGCTGCCTGTCTGTTCTGTGGCCATCTGGTACCGCTGCCGCCGCCACACACCTGTCAGCG  
GTCGTGTGTGCTCCTGCTCTGGGGCTGTCCCTGCTGTTTAGTATGCTGGAGTGGAGGTTCTGTGACTTCC  
TGTTTAGTGGTGTGATTCTAGTTGGTGTGAAACGTGAGATTTACCCAGTCCGCTGGCTGATTTTTTT  
ATGTGTGGTTCTCTGTGTTTCCAGCCTGGTCTGCTGGTCCAGGATCCTCTGTGGATCCCGGAAGATGCCG  
CTGACCAGGCTGTACGTGACCATCCTGCTCACAGTGTGGTCTTCCCTCTGCGGCCTGCCCTTCGGCA  
TTCTGGGGCCCTAATTTACAGGATGCACCTGAATTTGGAAGTCTTATATTGTCATGTTTATCTGGTTTG  
CATGTCCCTGTCTCTAAACAGTAGTGCCAACCCATCATTTACTTCTTCGTGGGCTCTTTTAGGCAG  
CGTCAAAATAGGCAGAACCTGAAGCTGGTCTCCAGAGGGCTCTGCAGGACAAGCCTGAGGTGGATAAAG  
GTGAAGGCGAGCTTCTGAGGAAAGCCTGGAGCTGTCCGGAAGCAGATTGGGGCCA

**ACGCGT**ACGCGGCCGCTCGAGCAGAAAACCTCATCTCAGAAGAGGATCTGGCAGCAAATGATATCCTGGATT  
ACAAGGATGACGACGATAAGGTTTAA



[View online »](#)

**Protein Sequence:** >RC219360 representing NM\_054032  
Red=Cloning site Green=Tags(s)

MDPTVPVFGTKLTPINGREETPCYNQTLSTFTVLTCIISLVGLTGNVAVLWLLGYRMRNNAVSIYILNLAA  
 ADFLFLSFQIIRSPLRLINISHLIRKILVSVMTFPYFTGLSMLSAISTERCLSVLWPIWYRCRRPHTLSA  
 VVCVLLWGLSLLFSMLEWRFCDFLFSGADSSWCETSDFIPVAWLIFLCVVLVCVSSLVLLVRILCGSRKMP  
 LTRLVYVITLLTVLVFLLCGLPFGILGALIYRMHLNLEVLVCHVYLVCMSSLSLSSANPIIYFFVGSFRQ  
 RQNRQNLKLVLQRALQDKPEVDKGEGLPEESLELSGSRLGP

TRTRPLEQKLISEEDLAANDILDYKDDDDKV

**Chromatograms:** [https://cdn.origene.com/chromatograms/mk6110\\_g05.zip](https://cdn.origene.com/chromatograms/mk6110_g05.zip)

**Restriction Sites:** SgfI-MluI

**Cloning Scheme:**

Cloning sites used for ORF Shuttling:



\* The last codon before the Stop codon of the ORF

**ACCN:** NM\_054032

**ORF Size:** 966 bp

**OTI Disclaimer:** The molecular sequence of this clone aligns with the gene accession number as a point of reference only. However, individual transcript sequences of the same gene can differ through naturally occurring variations (e.g. polymorphisms), each with its own valid existence. This clone is substantially in agreement with the reference, but a complete review of all prevailing variants is recommended prior to use. [More info](#)

**OTI Annotation:** This clone was engineered to express the complete ORF with an expression tag. Expression varies depending on the nature of the gene.

**Components:** The ORF clone is ion-exchange column purified and shipped in a 2D barcoded Matrix tube containing 10ug of transfection-ready, dried plasmid DNA (reconstitute with 100 ul of water).

**Reconstitution Method:**

1. Centrifuge at 5,000xg for 5min.
2. Carefully open the tube and add 100ul of sterile water to dissolve the DNA.
3. Close the tube and incubate for 10 minutes at room temperature.
4. Briefly vortex the tube and then do a quick spin (less than 5000xg) to concentrate the liquid at the bottom.
5. Store the suspended plasmid at -20°C. The DNA is stable for at least one year from date of shipping when stored at -20°C.

**RefSeq:** [NM\\_054032.3](#)

**RefSeq Size:** 1463 bp

**RefSeq ORF:** 969 bp

**Locus ID:** 117196

**UniProt ID:** [Q96LA9](#)

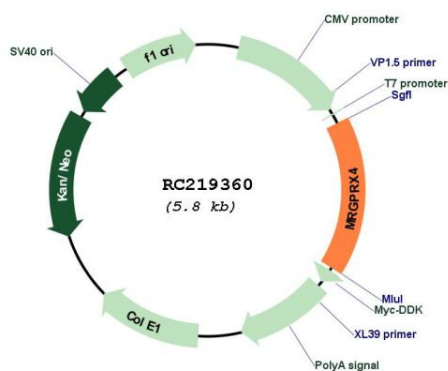
**Cytogenetics:** 11p15.1

**Protein Families:** Druggable Genome, GPCR, Transmembrane

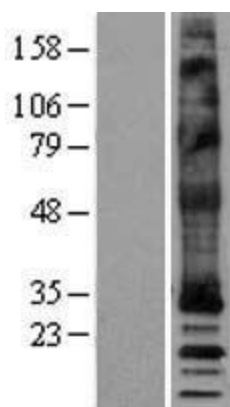
**MW:** 36.3 kDa

**Gene Summary:** Orphan receptor. Probably involved in the function of nociceptive neurons. May regulate nociceptor function and/or development, including the sensation or modulation of pain. Potently activated by enkephalins (By similarity).[UniProtKB/Swiss-Prot Function]

### Product images:



Circular map for RC219360



Western blot validation of overexpression lysate (Cat# [LY403295]) using anti-DDK antibody (Cat# [TA50011-100]). Left: Cell lysates from untransfected HEK293T cells; Right: Cell lysates from HEK293T cells transfected with RC219360 using transfection reagent MegaTran 2.0 (Cat# [TT210002]).