

Product datasheet for **RC219359**

CD39 (ENTPD1) (NM_001776) Human Tagged ORF Clone

Product data:

Product Type:	Expression Plasmids
Product Name:	CD39 (ENTPD1) (NM_001776) Human Tagged ORF Clone
Tag:	Myc-DDK
Symbol:	CD39
Synonyms:	ATPDase; CD39; NTPDase-1; SPG64
Mammalian Cell Selection:	Neomycin
Vector:	pCMV6-Entry (PS100001)
E. coli Selection:	Kanamycin (25 ug/mL)



[View online »](#)

ORF Nucleotide Sequence:

>RC219359 ORF sequence
 Red=Cloning site Blue=ORF Green=Tags(s)

TTTTGTAATACGACTCACTATAGGGCGGCCGGAATTCGTCGACTGGATCCGGTACCGAGGAGATCTGCC
 GCC**CGGATCGCC**

ATGGAAGATACAAAGGAGTCTAACGTGAAGACATTTTGCTCCAAGAATATCCTAGCCATCCTTGGCTTCT
 CCTCTATCATAGCTGTGATAGCTTTGCTTGCTGTGGGTTGACCCAGAACAAGCATTGCCAGAAAACGT
 TAAGTATGGGATTGTGCTGGATGCGGGTCTTCTCACACAAGTTTATACATCTATAAGTGGCCAGCAGAA
 AAGGAGAATGACACAGGCGTGGTGCATCAAGTAGAAGAATGCAGGGTTAAAGGCTCTGGAATCTCAAAAT
 TTGTTCCAGAAAGTAAATGAAATAGGCATTTACCTGACTGATTGCATGAAAAGAGCTAGGGAAGTGATTCC
 AAGGTCCCAGCACCAAGAGACACCCGTTTACCTGGGAGCCACGGCAGGCATGCGTTTCTCAGGATGGAA
 AGTGAAGAGTTGGCAGACAGGGTCTGGATGTGGTGGAGAGGAGCCTCAGCAACTACCCCTTTGACTTCC
 AGGGTGCCAGGATCATTACTGGCCAAGAGGAAGGTGCCTATGGCTGGATTACTATCAACTATCTGCTGGG
 CAAATTCAGTCAGAAAACAAGGTGGTTCAGCATAGTCCCATATGAAACCAATAATCAGGAAACCTTTGGA
 GCTTTGGACCTTGGGGGAGCCTCTACACAAGTCACTTTTGTACCCAAAACCAGACTATCGAGTCCCCAG
 ATAATGCTCTGCAATTTGCGCTCTATGGCAAGGACTACAATGTCTACACACATAGCTTCTTGTGCTATGG
 GAAGGATCAGGCACTCTGGCAGAAAAGTGGCAAGGACATTCAGGTTGCAAGTAATGAAATTTCTCAGGGAC
 CCATGCTTTTATCCTGGATATAAGAAGGTAGTGAACGTAAGTGACCTTTACAAGACCCCTGCACCAAGA
 GATTTGAGATGACTCTTCCATCCAGCAGTTTGAATCCAGGGTATTGAAAATCAACAATGCCATCA
 AAGCATCTGGAGCTCTCAACACCAGTTACTGCCCTTACTCCAGTGTGCCTCAATGGGATTTTCTTG
 CCACCCTCCAGGGGATTTTGGGCATTTTCACTTTTACTTTGTGATGAAGTTTTAAACTTTGACAT
 CAGAGAAAAGTCTCTCAGAAAAGGTGACTGAGATGATGAAAAAGTTCTGTGCTCAGCCTTGGGAGGAGAT
 AAAAACATCTTACGCTGGAGTAAAGGAGAAGTACCTGAGTGAATACTGCTTTTCTGGTACCTACATTCTC
 TCCTCTTCTGCAAGGCTATCATTTCACAGCTGATTCTGGGAGCACATCCATTTTATTGGCAAGATCC
 AGGGCAGCGACGCCGGCTGGACTTTGGGCTACATGCTGAACCTGACCAACATGATCCAGCTGAGCAACC
 ATTGTCCACACCTCTCTCCACTCCACCTATGTCTTCTCATGGTTCTATTCTCCTGGTCTTTTCCACA
 GTGGCCATCATAGGCTTGCTTATCTTTCACAAGCCTTCATATTTCTGAAAAGATATGGTA

ACGCGTACGCGGCCGCTCGAGCAGAAAAC**T**CATCTCAGAAAGAGGATCTGGCAGCAAATGATATCCTGGATT
 ACAAGGATGACGACGATAAGGTTTAA

Protein Sequence:

>RC219359 protein sequence
 Red=Cloning site Green=Tags(s)

MEDTKESNVKTFCSKNILAILGFSSIIAVIALLAVGLTQNKALPENVKYIVLVDAGSSHTSLYIYKWPAE
 KENDTGVVHQVEECRVKGPISKFVQKVNEIGIYLTDCMERAREVIPRSQHQPVYLGATAGMRLLRME
 SEELADRVLDVVERLSNYPDFQGARIITGQEEGAYGWITINYLLGKFSQKTRWFSIVPYETNNQETFG
 ALDLGGASTQVTFVPQNQTIESPDNALQFRLYGKDYNVYTHSFLCYGKDQALWQKLAKDIQVASNEILRD
 PCFHPGYKVVNVSDLYKTPCTKRFEMTLPFQFQFEIQGIGNYQQCHQSILELFNTSYCPYSQCAFNGIFL
 PPLQGDFGAFSAFYFVMKFLNLTSEKVSQEKVTEMMKFCAPWEEIKTSYAGVKEKYLSEYCFSGTYIL
 SLLLQGYHFTADSWEHIFHIGKIQGS DAGWTLGYMLNLNMIPAEQPLSTPLSHSTYVFLMVLFSVLVFT
 VAIIGLLIFHKPSYFWKDMV

TRTRPLEQK**L**ISEEDLAANDILDYKDDDDK**V**

Chromatograms:

https://cdn.origene.com/chromatograms/mk6207_d09.zip

Restriction Sites:

Sgfl-Mlul

Cloning Scheme:

ACCN:

NM_001776

ORF Size:

1533 bp

OTI Disclaimer:

Due to the inherent nature of this plasmid, standard methods to replicate additional amounts of DNA in E. coli are highly likely to result in mutations and/or rearrangements. Therefore, OriGene does not guarantee the capability to replicate this plasmid DNA. Additional amounts of DNA can be purchased from OriGene with batch-specific, full-sequence verification at a reduced cost. Please contact our customer care team at custsupport@origene.com or by calling 301.340.3188 option 3 for pricing and delivery.

The molecular sequence of this clone aligns with the gene accession number as a point of reference only. However, individual transcript sequences of the same gene can differ through naturally occurring variations (e.g. polymorphisms), each with its own valid existence. This clone is substantially in agreement with the reference, but a complete review of all prevailing variants is recommended prior to use. [More info](#)

OTI Annotation:

This clone was engineered to express the complete ORF with an expression tag. Expression varies depending on the nature of the gene.

Components:

The ORF clone is ion-exchange column purified and shipped in a 2D barcoded Matrix tube containing 10ug of transfection-ready, dried plasmid DNA (reconstitute with 100 ul of water).

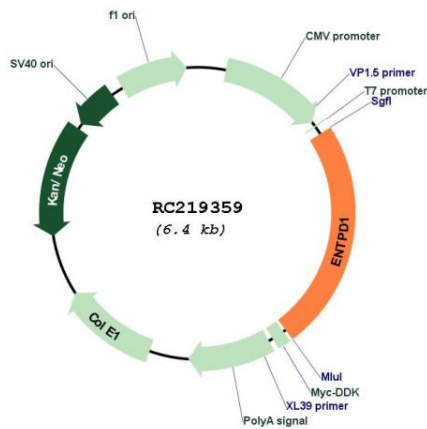
Reconstitution Method:

1. Centrifuge at 5,000xg for 5min.
2. Carefully open the tube and add 100ul of sterile water to dissolve the DNA.
3. Close the tube and incubate for 10 minutes at room temperature.
4. Briefly vortex the tube and then do a quick spin (less than 5000xg) to concentrate the liquid at the bottom.
5. Store the suspended plasmid at -20°C. The DNA is stable for at least one year from date of shipping when stored at -20°C.

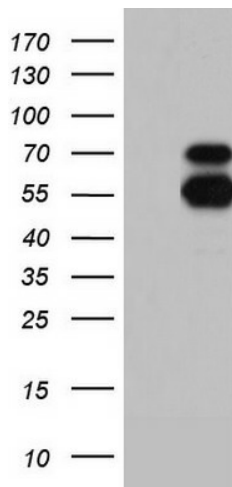
RefSeq: [NM_001776.6](#)
RefSeq Size: 12493 bp
RefSeq ORF: 1533 bp
Locus ID: 953
UniProt ID: [P49961](#)
Cytogenetics: 10q24.1
Domains: GDA1_CD39
Protein Families: Transmembrane
Protein Pathways: Purine metabolism, Pyrimidine metabolism
MW: 58 kDa

Gene Summary: The protein encoded by this gene is a plasma membrane protein that hydrolyzes extracellular ATP and ADP to AMP. Inhibition of this protein's activity may confer anticancer benefits. Several transcript variants encoding different isoforms have been found for this gene. [provided by RefSeq, Aug 2015]

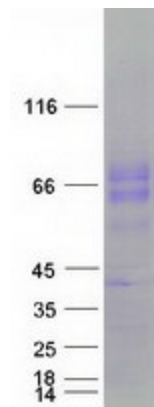
Product images:



Circular map for RC219359



HEK293T cells were transfected with the pCMV6-ENTRY control (Cat# [PS100001], Left lane) or pCMV6-ENTRY ENTPD1 (Cat# RC219359, Right lane) cDNA for 48 hrs and lysed. Equivalent amounts of cell lysates (5 ug per lane) were separated by SDS-PAGE and immunoblotted with anti-ENTPD1(Cat# [TA804402]).



Coomassie blue staining of purified ENTPD1 protein (Cat# [TP319359]). The protein was produced from HEK293T cells transfected with ENTPD1 cDNA clone (Cat# RC219359) using MegaTran 2.0 (Cat# [TT210002]).