

Product datasheet for RC219358

NPY4R (NM_005972) Human Tagged ORF Clone

Product data:

Product Type:	Expression Plasmids
Product Name:	NPY4R (NM_005972) Human Tagged ORF Clone
Tag:	Myc-DDK
Symbol:	NPY4R
Synonyms:	NPY4-R; PP1; PPYR1; Y4
Mammalian Cell Selection:	Neomycin
Vector:	pCMV6-Entry (PS100001)
E. coli Selection:	Kanamycin (25 ug/mL)
ORF Nucleotide Sequence:	>RC219358 ORF sequence Red=Cloning site Blue=ORF Green=Tags(s)

TTTTGTAATACGACTCACTATAGGGCGCCGGGAATTCGTCGACTGGATCCGGTACCGAGGAGATCTGCC
GCC**CGATCGCC**

ATGAACACCTCTCACCTCCTGGCCTTGCTGCTCCCAAAATCTCCACAAGGTGAAAACAGAAGCAAACCC
TGGGCACCCCATACAACCTCTCTGAACATTGCCAGGATTCGGTGGACGTGATGGTCTTCATCGTCACTTC
CTACAGCATTGAGACTGTCGTGGGGTCTGGGTAACTCTGCCTGATGTGTGACTGTGAGGCAGAAG
GAGAAAGCCAACGTGACCAACCTGCTTATCGCCAACCTGGCCTTCTGACTTCCTCATGTGCCTCTCT
GCCAGCCGCTGACCTCCGTCTACACCATCATGGACTACTGGATCTTTGGAGAGACCCTCTGCAAGATGTC
GGCCTTCATCCAGTGATGTCGGTGACGGTCTCCATCCTCTCGCTCGTCCCTGGTGGCCCTGGAGAGGCAT
CAGCTCATCATCAACCCAACAGGCTGGAAGCCAGCATCTCACAGGCCTACCTGGGGATTGTGCTCATCT
GGGTCAATGCCTGTGTCCTCTCCCTGCCCTTCTGGCCAACAGCATCCTGGAGAATGTCTCCACAAGAA
CCACTCCAAGGCTCTGGAGTTCTGGCGGATAAGGTGGTCTGTACCGAGTCCCTGGCCACTGGCTCACCAC
CGCACCATCTACACCACCTTCTGCTCCTTCCAGTACTGCCTCCACTGGGCTTCATCTTGGTCTGTT
ATGCACGCATCTACCGCGCCTGCAGAGGCAGGGGCGCGTGTTCACAAGGGCACCTACAGCTTGGCAGC
TGGGCACATGAAGCAGGTCAATGTGGTGTGGTGGTGTGGTGGTGGCCTTTGCCGTGCTCTGGCTGCCT
CTGCATGTGTTCAACAGCCTGGAAGACTGGCACCATGAGGCCATCCCCATCTGCCATGGGAACCTCATCT
TCTTAGTGTGCCACTTGCTTGGCATGGCCTCCACCTGTGTCAACCCATTATCTATGGCTTCTCAACAC
CAACTTCAAGAAGGAGATCAAGGCCCTGGTGTGACTTGGCAGCAGAGCGCCCCCTGGAGGAGTCAAG
CATCTGCCCTGTCCACAGTACATACGGAAGTCTCCAAGGGTCCCTGAGGCTAAGTGGCAGGTCCAATC
CCATT

ACGCGTACGCGGCCGCTCGAGCAGAAACTCATCTCAGAAGAGGATCTGGCAGCAAATGATATCCTGGATT
ACAAGGATGACGACGATAAGGTTTAA



[View online »](#)

Protein Sequence: >RC219358 protein sequence
 Red=Cloning site Green=Tags(s)

MNTSHLLALLLPKSPQGENRSKPLGTPYNFSEHCQDSVDVMVFI VTSYSIETVVGV LGNLCLMCVTVRQK
 EKANVTNLLIANLAFSDFLMCLLCQPLTSVYTIMDYWIFGETLCKMSAF IQCMSVTVSILSLVVALERH
 QLIINPTGWKPSISQAYLGIVLIWVIACVLSL PFLANSILENVFHKHNSKALEFLADKVVCTESWPLAHH
 RTIYTTFLLLFQYCLPLGFILVYARIYRRLQRQGRV FHKGTYSLRAGHMKQVNVV LVMVVAFAVLWLP
 LHVFNSELDWHHEAIPICHGNLIFLVCHLLAMASTCVNPF IYGF LNTNFKKEIKALVLTCCQSAPLEESE
 HLPLSTVHTEVSKGSLRLSGRSNPI

TRTRPLEQKLISEEDLAANDILDYKDDDDKV

Chromatograms: https://cdn.origene.com/chromatograms/mk6451_a10.zip

Restriction Sites: SgfI-MluI

Cloning Scheme:



ACCN: NM_005972

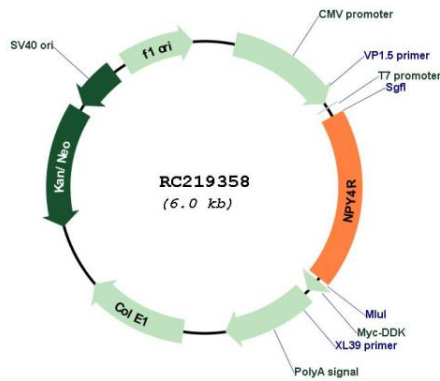
ORF Size: 1125 bp

OTI Disclaimer: Due to the inherent nature of this plasmid, standard methods to replicate additional amounts of DNA in E. coli are highly likely to result in mutations and/or rearrangements. Therefore, OriGene does not guarantee the capability to replicate this plasmid DNA. Additional amounts of DNA can be purchased from OriGene with batch-specific, full-sequence verification at a reduced cost. Please contact our customer care team at custsupport@origene.com or by calling 301.340.3188 option 3 for pricing and delivery.

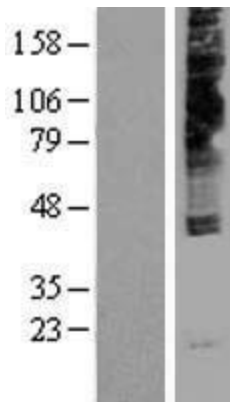
The molecular sequence of this clone aligns with the gene accession number as a point of reference only. However, individual transcript sequences of the same gene can differ through naturally occurring variations (e.g. polymorphisms), each with its own valid existence. This clone is substantially in agreement with the reference, but a complete review of all prevailing variants is recommended prior to use. [More info](#)

OTI Annotation:	This clone was engineered to express the complete ORF with an expression tag. Expression varies depending on the nature of the gene.
Components:	The ORF clone is ion-exchange column purified and shipped in a 2D barcoded Matrix tube containing 10ug of transfection-ready, dried plasmid DNA (reconstitute with 100 ul of water).
Reconstitution Method:	<ol style="list-style-type: none">1. Centrifuge at 5,000xg for 5min.2. Carefully open the tube and add 100ul of sterile water to dissolve the DNA.3. Close the tube and incubate for 10 minutes at room temperature.4. Briefly vortex the tube and then do a quick spin (less than 5000xg) to concentrate the liquid at the bottom.5. Store the suspended plasmid at -20°C. The DNA is stable for at least one year from date of shipping when stored at -20°C.
RefSeq:	NM_005972.3 , NP_005963.2
RefSeq Size:	1956 bp
RefSeq ORF:	1128 bp
Locus ID:	5540
UniProt ID:	P50391
Cytogenetics:	10q11.22
Domains:	7tm_1
Protein Families:	Druggable Genome, GPCR, Transmembrane
Protein Pathways:	Neuroactive ligand-receptor interaction
MW:	42.2 kDa
Gene Summary:	Receptor for neuropeptide Y and peptide YY. The rank order of affinity of this receptor for pancreatic polypeptides is PP, PP (2-36) and [Ile-31, Gln-34] PP > [Pro-34] PYY > PYY and [Leu-31, Pro-34] NPY > NPY > PYY (3-36) and NPY (2-36) > PP (13-36) > PP (31-36) > NPY free acid. [UniProtKB/Swiss-Prot Function]

Product images:



Circular map for RC219358



Western blot validation of overexpression lysate (Cat# [LY416955]) using anti-DDK antibody (Cat# [TA50011-100]). Left: Cell lysates from untransfected HEK293T cells; Right: Cell lysates from HEK293T cells transfected with RC219358 using transfection reagent MegaTran 2.0 (Cat# [TT210002]).