

## Product datasheet for RC219357L1

### AGXT2 (NM\_031900) Human Tagged Lenti ORF Clone

#### Product data:

Product Type:	Expression Plasmids
Product Name:	AGXT2 (NM_031900) Human Tagged Lenti ORF Clone
Tag:	Myc-DDK
Symbol:	AGXT2
Synonyms:	AGT2; BAIBA; DAIBAT
Mammalian Cell Selection:	None
Vector:	pLenti-C-Myc-DDK (PS100064)
E. coli Selection:	Chloramphenicol (34 ug/mL)
ORF Nucleotide Sequence:	The ORF insert of this clone is exactly the same as(RC219357).
Restriction Sites:	SgfI-MluI
Cloning Scheme:	

Cloning sites used for ORF Shuttling:



\* The last codon before the Stop codon of the ORF.

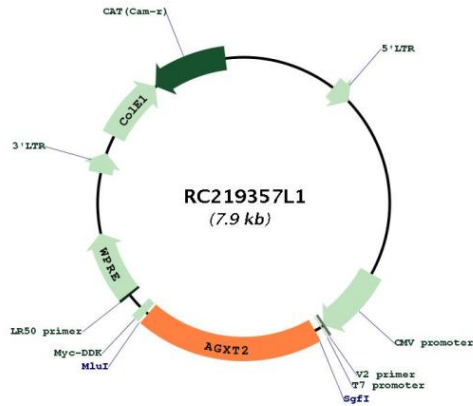
ACCN:	NM_031900
ORF Size:	1542 bp



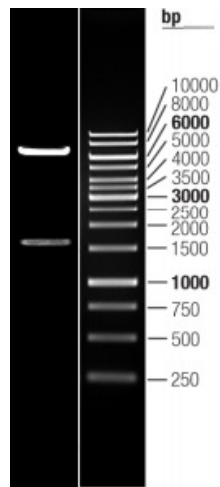
[View online »](#)

<b>OTI Disclaimer:</b>	The molecular sequence of this clone aligns with the gene accession number as a point of reference only. However, individual transcript sequences of the same gene can differ through naturally occurring variations (e.g. polymorphisms), each with its own valid existence. This clone is substantially in agreement with the reference, but a complete review of all prevailing variants is recommended prior to use. <a href="#">More info</a>
<b>OTI Annotation:</b>	This clone was engineered to express the complete ORF with an expression tag. Expression varies depending on the nature of the gene.
<b>Components:</b>	The ORF clone is ion-exchange column purified and shipped in a 2D barcoded Matrix tube containing 10ug of transfection-ready, dried plasmid DNA (reconstitute with 100 ul of water).
<b>Reconstitution Method:</b>	<ol style="list-style-type: none"><li>1. Centrifuge at 5,000xg for 5min.</li><li>2. Carefully open the tube and add 100ul of sterile water to dissolve the DNA.</li><li>3. Close the tube and incubate for 10 minutes at room temperature.</li><li>4. Briefly vortex the tube and then do a quick spin (less than 5000xg) to concentrate the liquid at the bottom.</li><li>5. Store the suspended plasmid at -20°C. The DNA is stable for at least one year from date of shipping when stored at -20°C.</li></ol>
<b>RefSeq:</b>	<a href="#">NM_031900.1</a>
<b>RefSeq Size:</b>	2165 bp
<b>RefSeq ORF:</b>	1545 bp
<b>Locus ID:</b>	64902
<b>UniProt ID:</b>	<a href="#">Q9BYV1</a>
<b>Cytogenetics:</b>	5p13.2
<b>Protein Families:</b>	Druggable Genome
<b>Protein Pathways:</b>	Alanine, aspartate and glutamate metabolism
<b>MW:</b>	52.4 kDa
<b>Gene Summary:</b>	The protein encoded by this gene is a class III pyridoxal-phosphate-dependent mitochondrial aminotransferase. It catalyzes the conversion of glyoxylate to glycine using L-alanine as the amino donor. It is an important regulator of methylarginines and is involved in the control of blood pressure in kidney. Polymorphisms in this gene affect methylarginine and beta-aminoisobutyrate metabolism, and are associated with carotid atherosclerosis. Alternative splicing results in multiple transcript variants. [provided by RefSeq, Apr 2015]

Product images:



Circular map for RC219357L1



Double digestion of RC219357L1 using SgfI and MluI