

## Product datasheet for RC219355

### Carboxypeptidase M (CPM) (NM\_198320) Human Tagged ORF Clone

#### Product data:

Product Type:	Expression Plasmids
Product Name:	Carboxypeptidase M (CPM) (NM_198320) Human Tagged ORF Clone
Tag:	Myc-DDK
Symbol:	Carboxypeptidase M
Mammalian Cell Selection:	Neomycin
Vector:	pCMV6-Entry (PS100001)
E. coli Selection:	Kanamycin (25 ug/mL)
ORF Nucleotide Sequence:	>RC219355 ORF sequence Red=Cloning site Blue=ORF Green=Tags(s)

TTTTGTAATACGACTCACTATAGGGCGGCCGGGAATTCGTCGACTGGATCCGGTACCGAGGAGATCTGCC  
GCC**CGATCGCC**

ATGGACTTCCCGTGCCTCTGGCTAGGGCTGTTGCTGCCTTTGGTAGCTGCGCTGGATTTCAACTACCACC  
GCCAGGAAGGGATGGAAGCGTTTTTGAAGACTGTTGCCAAAACACTACAGTTCTGTCACTCACTTACACAG  
TATTGGGAAATCTGTGAAAGGTAGAAACCTGTGGGTTCTTGTGGGGCGGTTTCCAAAGGAACACAGA  
ATTGGGATCCAGAGTTCAAATACGTGGCAAATATGCATGGAGATGAGACTGTTGGGCGGGAGCTGCTGC  
TCCATCTGATTGACTATCTCGTAACCAAGTATGGCAAAGACCCTGAAATCACAAATCTGATCAATAGTAC  
CCGGATACACATCATGCCTTCCATGAACCCAGATGGATTTGAAGCCGTCAAAAAGCCTGACTGTTACTAC  
AGCATCGAAGGGAAAATTATAACCAAGTATGACTTGAATCGAAATTTCCCGATGCTTTTGAATATAATA  
ATGTCTCAAGGCAGCCTGAAACTGTGGCAGTCAAGAGTGGCTGAAAACAGAGACGTTTGTCTCTCTGC  
AAACCTCCATGGTGGTGCCTCGTGGCCAGTTACCCATTTGATAATGGTGTTCAGCAACTGGGGCATT  
TACTCCGAAGCTTAACGCCTGATGATGATGTTTTTCAATATCTGCACATACCTATGCTTCAAGAAATC  
CCAACATGAAGAAAGGAGACGAGTGTAAAAACAAATGAACCTTCCCTAATGGTGTACAAATGGATACTC  
TTGGTATCCACTCCAAGGTGGAATGCAAGATTACAACACTACATCTGGGCCAGTGTTTTGAATTACGTTG  
GAGCTGTCATGCTGTAATATCCTCGTGAAGGAGAGCTTCCATCCTTTTGAATAATAACAAAGCCTCAT  
TAATTGAATATATAAGCAGGTGCACCTAGGTGTAAAGGGTCAAGTTTTTATGATCAGAATGGAAATCCATT  
ACCCAATGTAATTGTGGAAGTCCAGACAGAAAACATATCTGCCCTATAGAACCACAAATATGGAGAG  
TATTATCTCCTTCTTGGCTGGGTCTTATATAATAAATGTTACAGTCCCTGGACATGATCCACACATCA  
CAAAGGTGATTATTCCGGAGAAATCCCAGAACTCAGTGTCTTAAAAAGGATATTCTACTTCCATTCCA  
AGGGCAATTGGATTCTATCCCAGTATCAAATCCTTCATGCCCAATGATTCTCTATACAGAAATTTGCCA  
GACCACTAGCTGCAACAAAGCCTAGTTTGTCTTATTTTTAGTGAGTCTTTGCACATATCTTCAA

**ACGCGT**ACGCGGCCGCTCGAGCAGAAACTCATCTCAGAAGAGGATCTGGCAGCAAATGATATCTGGATT  
ACAAGGATGACGACGATAAGGTTTAA



[View online »](#)

**Protein Sequence:** >RC219355 protein sequence  
Red=Cloning site Green=Tags(s)

MDFPCLWLGLLLPLVAALDFNYHRQEGMEAF LKTV AQNYSSVTHLHSIGKSVKGRNLWLVVGRFPKEHR  
 IG IPEFKYVANMHGDETVGRELLHLIDYLVTS DGK DPEITNLINSTR IHI MP S MNP DGF EAVKKPDCYY  
 SIGREYNQYDLNRNFPDAFEYNNVSRQPETVAVMKWLKTET FVLSANLHGGALVASYPFDNGVQATGAL  
 YSRSLTPDDDFQYLAHTYASRNPNMKKGDECKNMNF PNGVTNGYSWYPLQGGMQDYNIWAQCFEITL  
 ELSCCKYPREEKLP SFWNNKASLIEYIKQVHLGVKGQVFDQNGNPLPNVIVEVQDRKHICPYRTNKYGE  
 YLLLLPGSYIINVTVP GHDPHITKVI IPEK SQNF SALKKDILLPFQGLD SIPVSNPSCPMIPL YRNLP  
 DHSAA TKPSLFLFLVSL LHIFFK

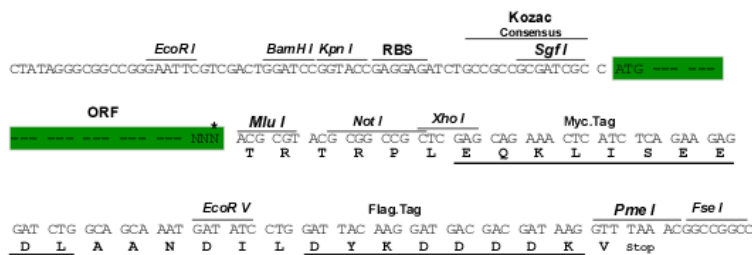
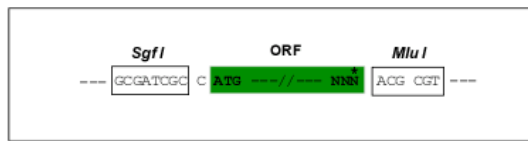
TRTRPLEQKLISEEDLAANDILDYKDDDDKV

**Chromatograms:** [https://cdn.origene.com/chromatograms/mk6666\\_a08.zip](https://cdn.origene.com/chromatograms/mk6666_a08.zip)

**Restriction Sites:** SgfI-MluI

**Cloning Scheme:**

Cloning sites used for ORF Shuttling:



\* The last codon before the Stop codon of the ORF

**ACCN:** NM\_198320

**ORF Size:** 1329 bp

**OTI Disclaimer:** The molecular sequence of this clone aligns with the gene accession number as a point of reference only. However, individual transcript sequences of the same gene can differ through naturally occurring variations (e.g. polymorphisms), each with its own valid existence. This clone is substantially in agreement with the reference, but a complete review of all prevailing variants is recommended prior to use. [More info](#)

**OTI Annotation:** This clone was engineered to express the complete ORF with an expression tag. Expression varies depending on the nature of the gene.

**Components:** The ORF clone is ion-exchange column purified and shipped in a 2D barcoded Matrix tube containing 10ug of transfection-ready, dried plasmid DNA (reconstitute with 100 ul of water).

**Reconstitution Method:**

1. Centrifuge at 5,000xg for 5min.
2. Carefully open the tube and add 100ul of sterile water to dissolve the DNA.
3. Close the tube and incubate for 10 minutes at room temperature.
4. Briefly vortex the tube and then do a quick spin (less than 5000xg) to concentrate the liquid at the bottom.
5. Store the suspended plasmid at -20°C. The DNA is stable for at least one year from date of shipping when stored at -20°C.

**RefSeq:** [NM\\_198320.5](#)

**RefSeq Size:** 6669 bp

**RefSeq ORF:** 1332 bp

**Locus ID:** 1368

**UniProt ID:** [P14384](#)

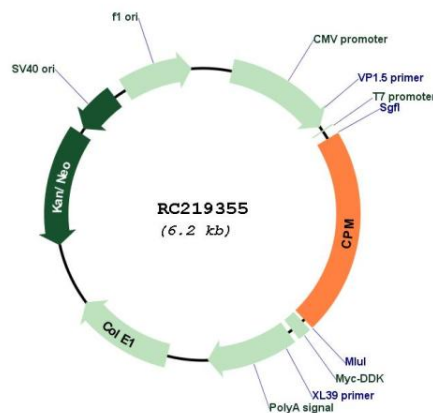
**Cytogenetics:** 12q15

**Protein Families:** Druggable Genome, Protease

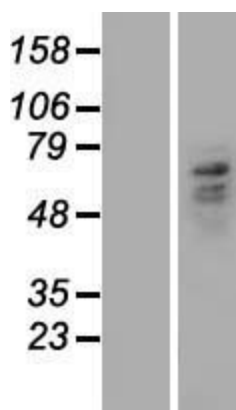
**MW:** 50.5 kDa

**Gene Summary:** The protein encoded by this gene is a membrane-bound arginine/lysine carboxypeptidase. Its expression is associated with monocyte to macrophage differentiation. This encoded protein contains hydrophobic regions at the amino and carboxy termini and has 6 potential asparagine-linked glycosylation sites. The active site residues of carboxypeptidases A and B are conserved in this protein. Three alternatively spliced transcript variants encoding the same protein have been described for this gene. [provided by RefSeq, Jul 2008]

## Product images:



Circular map for RC219355



Western blot validation of overexpression lysate (Cat# [LY405018]) using anti-DDK antibody (Cat# [TA50011-100]). Left: Cell lysates from untransfected HEK293T cells; Right: Cell lysates from HEK293T cells transfected with RC219355 using transfection reagent MegaTran 2.0 (Cat# [TT210002]).