

Product datasheet for RC219348

IL11RA (NM_147162) Human Tagged ORF Clone

Product data:

Product Type: Expression Plasmids
 Product Name: IL11RA (NM_147162) Human Tagged ORF Clone
 Tag: Myc-DDK
 Symbol: IL11RA
 Synonyms: CRSDA
 Mammalian Cell Selection: Neomycin
 Vector: pCMV6-Entry (PS100001)
 E. coli Selection: Kanamycin (25 ug/mL)
 ORF Nucleotide Sequence: >RC219348 representing NM_147162
 Red=Cloning site Blue=ORF Green=Tags(s)

TTTTGTAATACGACTCACTATAGGGCGGCCGGAATTCGTCGACTGGATCCGGTACCGAGGAGATCTGCC
 GCC**CGATCGCC**

ATGAGCAGCAGCTGCTCAGGGCTGAGCAGGGTCTGGTGGCCGTGGCTACAGCCCTGGTGTCTGCCTCT
 CCCCCTGCCCCAGGCCGTTGGGGCCCCAGGGTCCAGTATGGGCAGCCAGGCAGGTCCGTGAAGCTGTG
 TTGTCTGGAGTGACTGCCGGGACCCAGTGTCTGGTTTCGGGATGGGGAGCCAAAGCTGCTCCAGGGA
 CCTGACTCTGGGCTAGGGCATGAACTGGTCTGGCCAGGCAGCAGCACTGATGAGGGCACCTACATCT
 GCCAGACCCTGGATGGTGCCTGGGGGCACAGTGACCCTGCAGCTGGGCTACCCTCCAGCCCGCCTGT
 TGTCTCCTGCCAAGCAGCCGACTATGAGAACTTCTTTCGACTTGGAGTCCCAGCCAGATCAGCGGTTTA
 CCCACCCGCTACCTCACCTCCTACAGGAAGAAGACAGTCCTAGGAGCTGATAGCCAGAGGAGGAGTCCAT
 CCACAGGGCCCTGGCCATGCCACAGGATCCCCTAGGGGCTGCCCGCTGTGTTGTCCACGGGGCTGAGTT
 CTGGAGCCAGTACCGGATTAATGTGACTGAGGTGAACCCACTGGGTGCCAGCACACGCCTGCTGGATGTG
 AGCTTGCAGAGCATTTGCGCCCTGACCACCCAGGGCTGCCGGTAGAGTCACTACAGGTTACCCCC
 GACGCCTGCGAGCCAGCTGGACATACCTGCCTCCTGGCCGTGCCAGCCCACTTCTGCTCAAGTTCCG
 TTTGCAGTACCGTCCGGCGCAGCATCCAGCCTGGTCCACGGTGGAGCCAGCTGGACTGGAGGAGTGATC
 ACAGATGCTGTGGCTGGGCTGCCCATGCTGTACGAGTCACTGCCCCGGGACTTTCTAGATGCTGGCACCT
 GGAGCACCTGGAGCCCGGAGGCCTGGGGAACCTCCGAGCACTGGGACCATACCAAAGGAGATACCAGCATG
 GGGCCAGCTACACACGCAGCCAGAGGTGGAGCCTCAGGTGGACAGCCCTGCTCCTCAAGGCCCTCCCTC
 CAACCACACCCTCGGCTACTTGATCACAGGACTCTGTGGAGCAGGTAGCTGTGCTGGCGTCTTTGGGAA
 TCCTTTCTTCTGGACTGGTGGCTGGGGCCCTGGCACTGGGGCTCTGG

ACGCGTACGCGGCCGCTCGAGCAGAACTCATCTCAGAAGAGGATCTGGCAGCAATGATATCCTGGATT
 ACAAGGATGACGACGATAAGGTTTAA



Protein Sequence: >RC219348 representing NM_147162
Red=Cloning site Green=Tags(s)

MSSSCSGLSRVLVAVATALVSASSPCQAWGPPGVQYQGPGRSVKLCPCGVTAGDPVSWFRDGEPKLLQG
 PDSGLGHEL VLAQADSTDEGTICQTLDGALGGTVTLQLGYPPARPVVSCQAADYENF SCTWSPSQISGL
 PTRYLTSYRKKTVLGADSRSPSTGPWPCQDPLGAARCVVHGAEFWSQYRINVTEVNPLGASTRLLDV
 SLQSI LRPDP PQGLRVESVPGYPRRLRASWTYPASWPCQPHFL LKFR LQYRPAQHPAWSTVEPAGLEEV I
 TDAVAGLPHAVRVSARDFLDAGTWTWSP EAWGTPSTGTIPKEIPAWGQLHTQPEVEPQVDSPAPRPSL
 QPHRLLDHRDSVEQVAVLASLGILSFLGLVAGALALGLW

TRTRPLEQKLISEEDLAANDILDYKDDDDKV

Chromatograms: https://cdn.origene.com/chromatograms/mk8056_e09.zip

Restriction Sites: SgfI-MluI

Cloning Scheme:



* The last codon before the Stop codon of the ORF

ACCN: NM_147162

ORF Size: 1170 bp

OTI Disclaimer: The molecular sequence of this clone aligns with the gene accession number as a point of reference only. However, individual transcript sequences of the same gene can differ through naturally occurring variations (e.g. polymorphisms), each with its own valid existence. This clone is substantially in agreement with the reference, but a complete review of all prevailing variants is recommended prior to use. [More info](#)

OTI Annotation: This clone was engineered to express the complete ORF with an expression tag. Expression varies depending on the nature of the gene.

Components: The ORF clone is ion-exchange column purified and shipped in a 2D barcoded Matrix tube containing 10ug of transfection-ready, dried plasmid DNA (reconstitute with 100 ul of water).

Reconstitution Method:

1. Centrifuge at 5,000xg for 5min.
2. Carefully open the tube and add 100ul of sterile water to dissolve the DNA.
3. Close the tube and incubate for 10 minutes at room temperature.
4. Briefly vortex the tube and then do a quick spin (less than 5000xg) to concentrate the liquid at the bottom.
5. Store the suspended plasmid at -20°C. The DNA is stable for at least one year from date of shipping when stored at -20°C.

RefSeq: [NM_147162.1](#), [NP_671518.1](#)

RefSeq Size: 1458 bp

RefSeq ORF: 1172 bp

Locus ID: 3590

Cytogenetics: 9p13.3

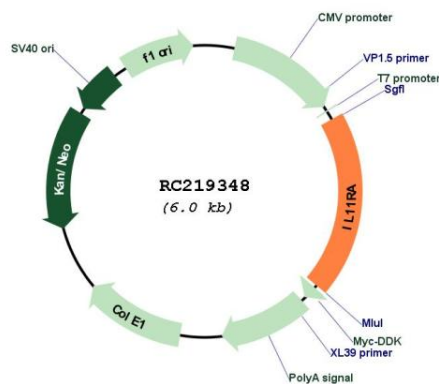
Protein Families: Druggable Genome, Transmembrane

Protein Pathways: Cytokine-cytokine receptor interaction, Hematopoietic cell lineage, Jak-STAT signaling pathway

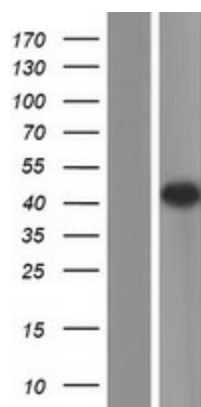
MW: 39.7 kDa

Gene Summary: Interleukin 11 is a stromal cell-derived cytokine that belongs to a family of pleiotropic and redundant cytokines that use the gp130 transducing subunit in their high affinity receptors. This gene encodes the IL-11 receptor, which is a member of the hematopoietic cytokine receptor family. This particular receptor is very similar to ciliary neurotrophic factor, since both contain an extracellular region with a 2-domain structure composed of an immunoglobulin-like domain and a cytokine receptor-like domain. Multiple alternatively spliced transcript variants have been found for this gene. [provided by RefSeq, Jun 2012]

Product images:



Circular map for RC219348



Western blot validation of overexpression lysate (Cat# [LY407822]) using anti-DDK antibody (Cat# [TA50011-100]). Left: Cell lysates from untransfected HEK293T cells; Right: Cell lysates from HEK293T cells transfected with RC219348 using transfection reagent MegaTran 2.0 (Cat# [TT210002]).