

Product datasheet for **RC219336**

IDUA (NM_000203) Human Tagged ORF Clone

Product data:

Product Type:	Expression Plasmids
Product Name:	IDUA (NM_000203) Human Tagged ORF Clone
Tag:	Myc-DDK
Symbol:	IDUA
Synonyms:	IDA; MPS1; MPSI
Mammalian Cell Selection:	Neomycin
Vector:	pCMV6-Entry (PS100001)
E. coli Selection:	Kanamycin (25 ug/mL)



[View online »](#)

ORF Nucleotide Sequence:

>RC219336 representing NM_000203
 Red=Cloning site Blue=ORF Green=Tags(s)

TTTTGTAATACGACTCACTATAGGGCGGCCGGGAATTCGTCGACTGGATCCGGTACCGAGGAGATCTGCC
 GCC**CGGATCGCC**

ATGCGTCCCTGCGCCCCGCGCCGCGTCTGGCGCTCCTGGCCTCGTCTGCGCCGCGCCCCGGTGG
 CCCGGCCGAGGCCCGCACCTGGTGCATGTGGACGCGGCCGCGCGCTGTGGCCCTGCGCGCTTCTG
 GAGGAGCACAGGCTTCTGCCCCCGCTGCCACACAGCCAGGCTGACCAGTACGTCCTCAGCTGGGACCAG
 CAGCTCAACCTCGCTATGTGGGCGCCGTCCTCACCGCGGCATCAAGCAGGTCCGGACCCACTGGCTGC
 TGGAGCTTGTACCACCAGGGGTCCACTGGACGGGGCTGAGCTACAACCTCACCCACCTGGACGGGTA
 CCTGGACCTTCTCAGGGAGAACCAGCTCCTCCCAGGTTTGTAGCTGATGGGCAGCGCCTCGGGCCACTTC
 ACTGACTTTGAGGACAAGCAGCAGGTGTTTGTAGTGAAGGACTTGGTCTCCAGCCTGGCCAGGAGATACA
 TCGGTAGGTACGACTGGCGCATGTTTCCAAGTGAACCTCGAGACGTGGAATGAGCCAGACCACCAGCA
 CTTTGACAACGTCTCCATGACCATGCAAGGCTTCTGAACTACTACGATGCCTGCTCGGAGGGTCTGCGC
 GCCGCCAGCCCCGCCCTGCGGCTGGGAGGCCCGCGACTCCTTCCACACCCACCGCGATCCCCGCTGA
 GCTGGGGCCTCCTGCGCCACTGCCACGACGGTACCAACTTCTTACTGGGGAGGGCGGCGTGGCGGTGGA
 CTACATCTCCCTCCACAGGAAGGGTGGCGCAGCTCCATCTCCATCCTGGAGCAGGAGAAGGTGCTGCGG
 CAGCAGATCCGGCAGCTTTCCTCAAGTTCCGGGACACCCCAATTTACAACGACGAGGGCGGACCCGCTGG
 TGGGCTGGTCCCTGCCACAGCCGTGGAGGGCGGACGTGACCTACGCGGCCATGGTGGTGAAGGTGATCGC
 GCAGCATCAGAACCTGCTACTGGCCAACACCACCTCCGCCTTCCCTACGCGCTCCTGAGCAACGACAAT
 GCCTTCTGAGCTACCACCCGCACCCCTTCGCGCAGCGCACGCTCACCGCGCCTCCAGGTCAACAACA
 CCCGCCCCCGCACGTGCAGCTGTTGCGCAAGCCGGTGTCTCACGGCCATGGGGCTGCTGGCGCTGCTGGA
 TGAGGAGCAGCTCTGGGCCGAAGTGTGCGCAGGCCGGGACCGTCTGGACAGCAACCACAGGTGGGCGTC
 CTGGCCAGCGCCACCGCCCCAGGGCCCGCGGACGCTGGCGCGCCGCGGTGCTGATCTACGCGAGCG
 ACGACACCCGCGCCACCCCAACCGCAGCGTGGCGGTGACCTGCGGCTGCGCGGGGTGCCCGCGGCC
 GGGCCTGGTCTACGTACGCGCTACCTGGACAACGGGCTCTGCAGCCCCGACGGCGAGTGGCGGCGCCTG
 GGCCGGCCGCTTCCCCACGGCAGAGCAGTTCGGGCGCATGCGCGCGGCTGAGGACCCGGTGGCCGCGG
 CGCCCCGCCCTTACCCGCGGGCGCCGCTGACCCTGCGCCCCGCGTGGGCTGCCGTCGCTTTTGT
 GGTGCAGTGTGTGCGCGCCCCGAGAAGCCGCGGGCAGGTACGCGGCTCCGCGCCCTGCCCTGACC
 CAAGGGCAGCTGGTCTGGTCTGGTCCGATGAACACGTGGGCTCCAAGTGCCTGTGGACATACGAGATCC
 AGTTCTCTCAGGACGGTAAGGCGTACACCCCGGTACGAGGAAGCCATCGACCTTCAACCTTTTGTGTT
 CAGCCCAGACACAGGTGCTGTCTCTGGCTCCTACCGAGTTCGAGCCCTGGACTACTGGGCCCGACCAGGC
 CCTTCTCGGACCTGTGCCGTACTGGAGTCCCTGTGCCAAGAGGGCCCCATCCCCGGGAATCCA

AG**CGGACCG**ACGCGTACGCGGCCGCTCGAGCAGAACTCATCTCAGAAGAGGATCTGGCAGCAAATGATATCC
 TGGATTACAAGGATGACGACGATAAGGTTTAA

Protein Sequence: >RC219336 representing NM_000203
 Red=Cloning site Green=Tags(s)

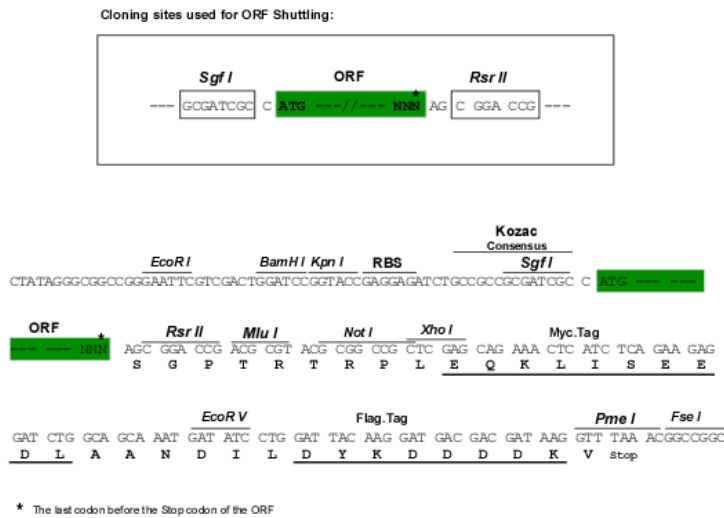
MRPLRPRAALLALLASLLAAPPVAPAEAPHLVHVDAARALWPLRRFWRSTGFCPPLPHSQADQYVLSWDQ
 QLNLAYVGAVPHRGIKQVRTHWLELVTRRGSTGRGLSYNFTHLDGYLDLLRENQLLPGFELMGSASGHF
 TDFEDKQQVFWEKDLVSSLARRYIGRYGLAHVSKWNFETWNEPDHDFDNVSMTMQGFNLNYDACSEGLR
 AASPALRLGGPGDSFHTPPRSPLSWGLLRHCHDGTNFFTGEAGVRLDYISLHRKGARSSISILEQEKVVA
 QQIRQLFPKFADTPIYNDEADPLVGWSLPQWRADVTYAAMVVKVIAQHQNLLANTTSAPFYALLSNDN
 AFLSYHPPFAQRTL TARFQVNNTRPPHVQLLRKPVLTAMGLLALLDEEQLWAEVVSQAGTVLDSNHTVGV
 LASAHRPQGPADAWRAAVLIYASDDTRAHPNRSVAVTLRLRGVPPGPGLVYVTRYLDNGLCSPDGEWRRL
 GRPVFPTAEQFRMRAAEDPVAAAPRPLPAGGRLTLRPALRPLSLLLHVHVCARPEKPPGQVTRLRALPLT
 QQQLVLVWSDEHVGSKCLWTYEIQFSQDGKAYTPVSRKPSTFNLVVFSPDTGAVSGSYRVRALDYWARPG
 PFSDPVPYLEVPVPRGPPSPGNP

SGP TRRRLEQKLI SEEDLAANDILDYKDDDDKV

Chromatograms: https://cdn.origene.com/chromatograms/mk8022_b04.zip

Restriction Sites: SgfI-RsrII

Cloning Scheme:



ACCN: NM_000203

ORF Size: 1959 bp

OTI Disclaimer: Due to the inherent nature of this plasmid, standard methods to replicate additional amounts of DNA in E. coli are highly likely to result in mutations and/or rearrangements. Therefore, OriGene does not guarantee the capability to replicate this plasmid DNA. Additional amounts of DNA can be purchased from OriGene with batch-specific, full-sequence verification at a reduced cost. Please contact our customer care team at custsupport@origene.com or by calling 301.340.3188 option 3 for pricing and delivery.

The molecular sequence of this clone aligns with the gene accession number as a point of reference only. However, individual transcript sequences of the same gene can differ through naturally occurring variations (e.g. polymorphisms), each with its own valid existence. This clone is substantially in agreement with the reference, but a complete review of all prevailing variants is recommended prior to use. [More info](#)

OTI Annotation: This clone was engineered to express the complete ORF with an expression tag. Expression varies depending on the nature of the gene.

Components: The ORF clone is ion-exchange column purified and shipped in a 2D barcoded Matrix tube containing 10ug of transfection-ready, dried plasmid DNA (reconstitute with 100 ul of water).

Reconstitution Method:

1. Centrifuge at 5,000xg for 5min.
2. Carefully open the tube and add 100ul of sterile water to dissolve the DNA.
3. Close the tube and incubate for 10 minutes at room temperature.
4. Briefly vortex the tube and then do a quick spin (less than 5000xg) to concentrate the liquid at the bottom.
5. Store the suspended plasmid at -20°C. The DNA is stable for at least one year from date of shipping when stored at -20°C.

Note: Plasmids are not sterile. For experiments where strict sterility is required, filtration with 0.22um filter is required.

RefSeq: [NM_000203.5](#)

RefSeq Size: 2197 bp

RefSeq ORF: 1962 bp

Locus ID: 3425

UniProt ID: [P35475](#)

Cytogenetics: 4p16.3

Protein Families: Druggable Genome

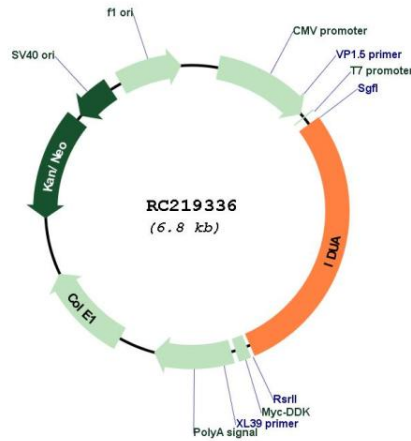
Protein Pathways: Glycosaminoglycan degradation, Lysosome, Metabolic pathways

MW: 72.67 kDa

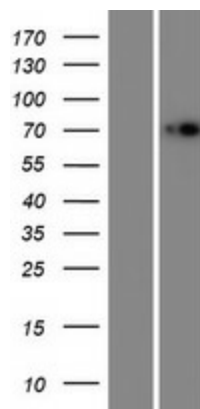
Gene Summary:

This gene encodes an enzyme that hydrolyzes the terminal alpha-L-iduronic acid residues of two glycosaminoglycans, dermatan sulfate and heparan sulfate. This hydrolysis is required for the lysosomal degradation of these glycosaminoglycans. Mutations in this gene that result in enzymatic deficiency lead to the autosomal recessive disease mucopolysaccharidosis type I (MPS I). [provided by RefSeq, Jul 2008]

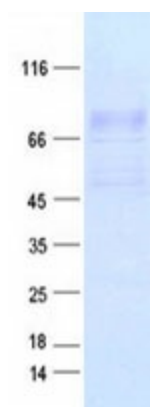
Product images:



Circular map for RC219336



Western blot validation of overexpression lysate (Cat# [LY424864]) using anti-DDK antibody (Cat# [TA50011-100]). Left: Cell lysates from untransfected HEK293T cells; Right: Cell lysates from HEK293T cells transfected with RC219336 using transfection reagent MegaTran 2.0 (Cat# [TT210002]).



Coomassie blue staining of purified IDUA protein (Cat# [TP319336]). The protein was produced from HEK293T cells transfected with IDUA cDNA clone (Cat# RC219336) using MegaTran 2.0 (Cat# [TT210002]).