

Product datasheet for **RC219332**

RNF39 (NM_025236) Human Tagged ORF Clone

Product data:

Product Type:	Expression Plasmids
Product Name:	RNF39 (NM_025236) Human Tagged ORF Clone
Tag:	Myc-DDK
Symbol:	RNF39
Synonyms:	FAP216; HZF; HZFW; LIRF
Mammalian Cell Selection:	Neomycin
Vector:	pCMV6-Entry (PS100001)
E. coli Selection:	Kanamycin (25 ug/mL)
ORF Nucleotide Sequence:	>RC219332 ORF sequence Red=Cloning site Blue=ORF Green=Tags(s)

TTTTGTAATACGACTCACTATAGGGCGGCCGGAATTCGTCGACTGGATCCGGTACCGAGGAGATCTGCC
GCC**CGATCGCC**

ATGTGGTGGAGAGATTTGACGAGACTGAGACTCTGGTTGAAGAGAGAGGCAATCCAGGAGAGGGGCGGA
AAGCGGCAAAAGTTAATGCGGGAGTCGGAGAGAAGGGCATCTACACAGCAAGCAGAGGGGCGGCCCGCC
ATCTGCGCGCTCGAAGGCGGTACGGTGGTCGCGGAAGGGGCGGCGTCCAGATCTGGCTTTCCATGGAT
GCGCCCGAGCTGGGCCCCGGGCTGGTGGAGCGTCTGGAGCAGCTGGCGACGTGTCTCTGTGCGGGGCT
CCTTCGAGGACCGGTGCTTCTGGCGTGCAGCACAGCTTCTGCCGCGCGTGTCTGGCCCGCGCTGGGG
GACTCCGCCCGGCGACCGGCACCGAGGCTTCCCCACCGCCTGTCCCTGCTGCGGCCGTGCCGTGTCCCGC
CGCAGCCTGAGGTCTAATGTGCGGCTGGCGGTGGAGGTGCGAATCAGCCGCGAGCTGCGAGAGAAGCTGG
CTGAGCCTGGGGCCCGTGCAGGGAGACGCCGAGGGGGCGCATCCCCACCATGGGCTGCCTGGACCTGCC
CGGAGAGGATATGAGGAAGACATGGAGACGATTTGAAGTCCCAACATCCAAGTCATCTAATTCAGAGGAT
GATCTCCCTGAAGATTATCCAGTGGTCAAAAAATGCTTCATAGACTGACAGCCGACCTGACCTGGACC
CTGGGACCGCACACCGCCGCTGCTCATCTCCGCCGACCGCCGACGCGTACAACCTGGCCCCACAGGGAC
GCCCCGCGCCCCCTGACGGCCCCAAGCGCTTCGATCAGCTCCCAGCTGTGCTGGGTGCGCAGGGCTTCGGG
GCCGGCCGCCACTGCTGGGAGGTGGAGACTGCGGACGCCCTCCTGCAGAGACTTTCTGGGAGGATG
CGGACGACGAGGAGAGCCACTATGCAAGTGGGCGCGGCCGCGGAATCAGTGCAACGCAAGGGCTGCGTAAG
GCTGTGCCCTGCGGGGGCCGTGTGGGCCGTGGAGGGCCGCGCGGCCGCTGTGGGCCCTCACGGCACCC
GAACCCACCTGCTGGGCGGTGTTGAGCCCCGCGCGCGCATTGCGTGGACCTGGACTGGGAGCGGG
GCCGCGTGGCCTTCTACGACGGCCGCTCACTCGACCTGCTTTACGCTTCCAGGCGCCTGGCCCCCTGGG
GGAGCGCATTTCCCGCTGTTCTGCACCTGCGACCCTCGTCTCCGCTCCGATTGTACCAGCGGAAAGC

ACGCGTACGCGGCCGCTCGAGCAGAACTCATCTCAGAAGAGGATCTGGCAGCAAATGATATCTGGATT
ACAAGGATGACGACGATAAGGTTTAA



[View online »](#)

Protein Sequence: >RC219332 protein sequence
 Red=Cloning site Green=Tags(s)

MWWRDLTRLRLWLKREAIPEGGRKAAKVNAGVGEKGIYTASSRGGPPSARSKAVTVVAEGAASRSWL SMD
 APELGPG LVERLEQLATCPLCGGSFEDPVLLACEHSFCRACLARRWGTPPATGTEASPTACPCGLPCPR
 RSLRSNVLAVEVRISRELREKLAEPGARAGRRRGRIPTMGCLDLPGEDMRKTWRRFEVPTSKSSNSD
 DLPEDYPVVKMLHRLTADLTDPGTAHRRLLISADRRSVQLAPPGTPAPPDGPKRFDQLPAVLGAQGF
 AGRHCWEVETADAASCRDSSGEDADDEESHYAVGAAGESVQRKGCVRLLCPAGAVWAVEGRGRLWALTAP
 EPTLLGGVEPPRRIRVDLDWGRVAFYDGRSLDLLYAFQAPGLGERIFPLFCTCDPRAPLRIVPAES

TRTRPLEQKLISEEDLAANDILDYKDDDDKV

Chromatograms: https://cdn.origene.com/chromatograms/mk6473_d09.zip

Restriction Sites: SgfI-MluI

Cloning Scheme:



ACCN: NM_025236

ORF Size: 1260 bp

OTI Disclaimer: The molecular sequence of this clone aligns with the gene accession number as a point of reference only. However, individual transcript sequences of the same gene can differ through naturally occurring variations (e.g. polymorphisms), each with its own valid existence. This clone is substantially in agreement with the reference, but a complete review of all prevailing variants is recommended prior to use. [More info](#)

OTI Annotation: This clone was engineered to express the complete ORF with an expression tag. Expression varies depending on the nature of the gene.

Components: The ORF clone is ion-exchange column purified and shipped in a 2D barcoded Matrix tube containing 10ug of transfection-ready, dried plasmid DNA (reconstitute with 100 ul of water).

Reconstitution Method:

1. Centrifuge at 5,000xg for 5min.
2. Carefully open the tube and add 100ul of sterile water to dissolve the DNA.
3. Close the tube and incubate for 10 minutes at room temperature.
4. Briefly vortex the tube and then do a quick spin (less than 5000xg) to concentrate the liquid at the bottom.
5. Store the suspended plasmid at -20°C. The DNA is stable for at least one year from date of shipping when stored at -20°C.

RefSeq: [NM_025236.3](#)

RefSeq Size: 2170 bp

RefSeq ORF: 1059 bp

Locus ID: 80352

UniProt ID: [Q9H2S5](#)

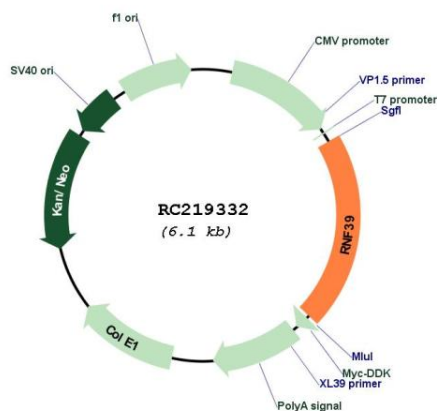
Cytogenetics: 6p22.1

Protein Families: Druggable Genome

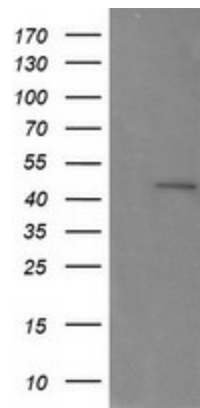
MW: 45.5 kDa

Gene Summary: This gene lies within the major histocompatibility complex class I region on chromosome 6. Studies of a similar rat protein suggest that this gene encodes a protein that plays a role in an early phase of synaptic plasticity. Multiple transcript variants encoding different isoforms have been found for this gene. [provided by RefSeq, Jul 2008]

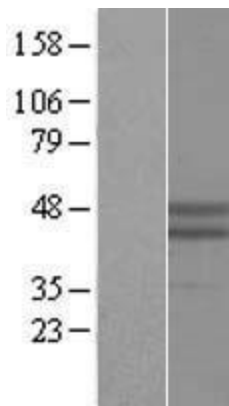
Product images:



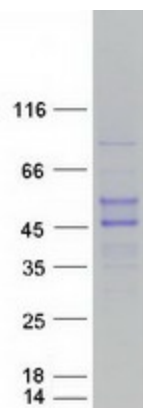
Circular map for RC219332



HEK293T cells were transfected with the pCMV6-ENTRY control (Cat# [PS100001], Left lane) or pCMV6-ENTRY RNF39 (Cat# RC219332, Right lane) cDNA for 48 hrs and lysed. Equivalent amounts of cell lysates (5 ug per lane) were separated by SDS-PAGE and immunoblotted with anti-RNF39 (Cat# [TA505912]). Positive lysates [LY410747] (100ug) and [LC410747] (20ug) can be purchased separately from OriGene.



Western blot validation of overexpression lysate (Cat# [LY410747]) using anti-DDK antibody (Cat# [TA50011-100]). Left: Cell lysates from untransfected HEK293T cells; Right: Cell lysates from HEK293T cells transfected with RC219332 using transfection reagent MegaTran 2.0 (Cat# [TT210002]).



Coomassie blue staining of purified RNF39 protein (Cat# [TP319332]). The protein was produced from HEK293T cells transfected with RNF39 cDNA clone (Cat# RC219332) using MegaTran 2.0 (Cat# [TT210002]).