

Product datasheet for RC219328

IL36 alpha (IL36A) (NM_014440) Human Tagged ORF Clone

Product data:

Product Type: Expression Plasmids
Product Name: IL36 alpha (IL36A) (NM_014440) Human Tagged ORF Clone
Tag: Myc-DDK
Symbol: IL36 alpha
Synonyms: FIL1; FIL1(EPSILON); FIL1E; IL-1F6; IL1(EPSILON); IL1F6
Mammalian Cell Selection: Neomycin
Vector: pCMV6-Entry (PS100001)
E. coli Selection: Kanamycin (25 ug/mL)
ORF Nucleotide Sequence: >RC219328 representing NM_014440.
Blue=ORF Red=Cloning site Green=Tag(s)

```
GCTCGTTTGTAGTAACCGTCAGAATTTGTAAACGACTACTATAGGGCGCCGGGAATTCGTCGACTG
GATCCGGTACCGAGGAGATCTGCCGCCGCGATCGCC
ATGGAAAAAGCATTGAAAATTGACACACCTCAGCGGGGAGCATTGAGGATATCAATCATCGGGTGTGG
GTTCTTCAGGACCAGACGCTCATAGCAGTCCCAGGAAGGACCGTATGTCTCCAGTCACTATTGCCTTA
ATCTCATGCCGACATGTGGAGACCCTTGAGAAAGACAGAGGGAACCCCATCTACCTGGGCCTGAATGGA
CTCAATCTCTGCCTGATGTGTGCTAAAGTCGGGGACCAGCCACACTGCAGCTGAAGGAAAAGGATATA
ATGGATTTGTACAACCAACCCGAGCCTGTGAAGTCCTTTCTCTTCTACCACAGCCAGAGTGGCAGGAAC
TCCACCTTCGAGTCTGTGGCTTTCCTGGCTGGTTCATCGCTGTCAGCTCTGAAGGAGGCTGCCTCTC
ATCCTTACCCAAGAAGTGGGAAAGCCAACACTACTGACTTTGGGTTAACTATGCTGTTT
ACGCGTACGCGGCCGCTCGAGCAGAAACTCATCTCAGAAGAGGATCTGGCAGCAAATGATATCCTGGAT
TACAAGGATGACGACGATAAGGTTAAACGGCCGGC
```

Protein Sequence: >Peptide sequence encoded by RC219328
Blue=ORF Red=Cloning site Green=Tag(s)

```
MEKALKIDTPQRGSIQDINHRVWLQDQTLIAVPRKDRMSPVTIALISCRHVETLEKDRGNPIYLLGLNG
LNLCLMCAKVGDPQLQLKEKDIMDLYNQPEPVKSFLFYHSQSGRNSTFESVAFPGWFIASVSEGGCPL
ILTQELGKANTDFGLTMLF
TRTRPLEQKLISEEDLAANDILDYKDDDDKV
```

Recombinant protein using RC219328 also available, [TP319328M](#)

Chromatograms: https://cdn.origene.com/chromatograms/mk6448_b04.zip

Restriction Sites: Sgfl-Mlul



[View online >](#)

Cloning Scheme:


ACCN: NM_014440

ORF Size: 474 bp

OTI Disclaimer: The molecular sequence of this clone aligns with the gene accession number as a point of reference only. However, individual transcript sequences of the same gene can differ through naturally occurring variations (e.g. polymorphisms), each with its own valid existence. This clone is substantially in agreement with the reference, but a complete review of all prevailing variants is recommended prior to use. [More info](#)

OTI Annotation: This clone was engineered to express the complete ORF with an expression tag. Expression varies depending on the nature of the gene.

Components: The ORF clone is ion-exchange column purified and shipped in a 2D barcoded Matrix tube containing 10ug of transfection-ready, dried plasmid DNA (reconstitute with 100 ul of water).

- Reconstitution Method:**
1. Centrifuge at 5,000xg for 5min.
 2. Carefully open the tube and add 100ul of sterile water to dissolve the DNA.
 3. Close the tube and incubate for 10 minutes at room temperature.
 4. Briefly vortex the tube and then do a quick spin (less than 5000xg) to concentrate the liquid at the bottom.
 5. Store the suspended plasmid at -20°C. The DNA is stable for at least one year from date of shipping when stored at -20°C.

RefSeq Size: 477 bp

RefSeq ORF: 477 bp

Locus ID: 27179

UniProt ID: [Q9UHA7](#)

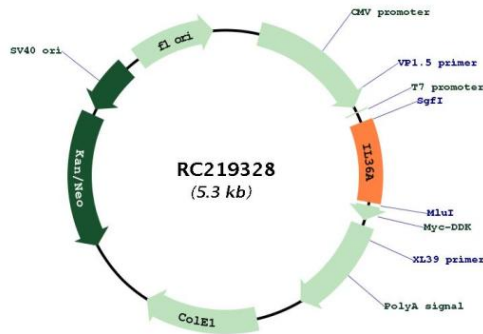
Cytogenetics: 2q14.1

Protein Families: Druggable Genome, Secreted Protein

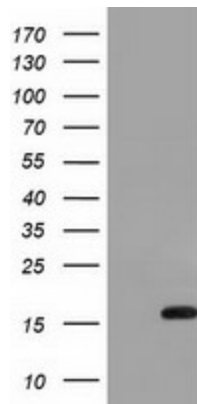
MW: 17.7 kDa

Gene Summary: The protein encoded by this gene is a cytokine that can activate NF-kappa-B and MAPK signaling pathways to generate an inflammatory response. The encoded protein functions primarily in skin and demonstrates increased expression in psoriasis. In addition, decreased expression of this gene has been linked to a poor prognosis in both hepatocellular carcinoma and colorectal cancer patients. [provided by RefSeq, Nov 2015]

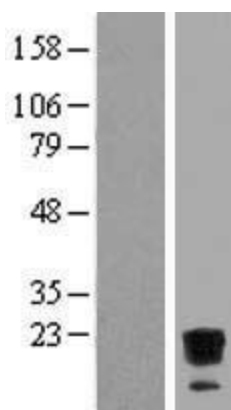
Product images:



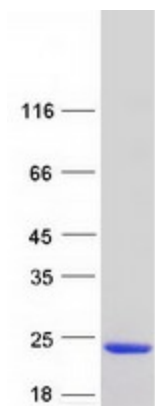
Circular map for RC219328



HEK293T cells were transfected with the pCMV6-ENTRY control (Cat# [PS100001], Left lane) or pCMV6-ENTRY IL1F6 (Cat# RC219328, Right lane) cDNA for 48 hrs and lysed. Equivalent amounts of cell lysates (5 ug per lane) were separated by SDS-PAGE and immunoblotted with anti-IL1F6 (Cat# [TA501459]). Positive lysates [LY415288] (100ug) and [LC415288] (20ug) can be purchased separately from OriGene.



Western blot validation of overexpression lysate (Cat# [LY415288]) using anti-DDK antibody (Cat# [TA50011-100]). Left: Cell lysates from untransfected HEK293T cells; Right: Cell lysates from HEK293T cells transfected with RC219328 using transfection reagent MegaTran 2.0 (Cat# [TT210002]).



Coomassie blue staining of purified IL36A protein (Cat# [TP319328]). The protein was produced from HEK293T cells transfected with IL36A cDNA clone (Cat# RC219328) using MegaTran 2.0 (Cat# [TT210002]).