

Product datasheet for **RC219327**

FOXJ3 (NM_014947) Human Tagged ORF Clone

Product data:

Product Type:	Expression Plasmids
Product Name:	FOXJ3 (NM_014947) Human Tagged ORF Clone
Tag:	Myc-DDK
Symbol:	FOXJ3
Mammalian Cell Selection:	Neomycin
Vector:	pCMV6-Entry (PS100001)
E. coli Selection:	Kanamycin (25 ug/mL)



[View online »](#)

ORF Nucleotide Sequence:

>RC219327 representing NM_014947
 Red=Cloning site Blue=ORF Green=Tags(s)

TTTTGTAATACGACTCACTATAGGGCGGCCGGAATTCGTCGACTGGATCCGGTACCGAGGAGATCTGCC
 GCC**CGGATCGCC**

ATGGGTTTGTATGGACAGGCTTGTCCATCTGTAACCTCATTAAAGGATGACATCTGAACTGGAGAGCAGCC
 TAACGTCTATGGACTGGTTACCACAGCTACCATGAGAGCAGCCATCCAAAAATCTGATGCTACACAAAA
 TGCACATGGAAACAGGAATTTCTAAGAAGAATGCACTCCTTGACCCAAATACAACCTCTGGACCAGGAAGAA
 GTCCAACAGCACAAAGATGGAAACCTCCATACAGTTATGCCAGCCTCATTACATTTGCAATTAATAGCT
 CACCCAAAAAGAAAATGACTTTAAGTGAATTTATCAGTGGATTTGTGATAAATCCCATATTATAGAGA
 GGCTGGCAGTGGTTGGAAGAATCCATACGACATAATCTGTCATTGAACAAATGTTTCCTTAAAGTGCT
 CGATCTAAGGATGACCTGGAAGGGTCTACTGGGCAATAGACACCAATCCGAAGGAAGATGCGCTGC
 CTACTCGGCCAAAGAAGAGGGCAGCATCTGTAGAACGGGCTCACTCCATATAGCATAGATTAGATTCC
 TTTGGGAATGGAGTGATTATTTGCGGAAGTGCCTCTCCAACCTTGGAATCAACACTGTGACTAACAAA
 GTAACATTGTATAACACTGATCAGGATGGTAGTAGCCACGAGTAGCCTTAAACAACAGTCTCTCAG
 ACCAGAGTTTGGCATCTGTTAATTTGAACAGTGTGGAAGTGTGCATAGTTATACACCGGTGACAAGCCA
 TCCAGAATCAGTCTCTCAATCATTAACTCCTCAGCAGCAACCACAGTACAACCTTCCAGAAAAGACAAG
 CAACTACTTTTCTCAGAAATAAATTTGAAGATCTTAGTGCTCATTTCGGAGCCTTTATAAGTCAGTTT
 TTGAGCAGTCACTTAGTCAACAAGGTTTGTGAAACATCCCTTCTGAATCTTCCAGCAGTCCCACACTTC
 ATGTACCTATCAGCACTCTCCAGCAGTACAGTGAAGTCACTCACCCACACAGCAACCAAGCAGCCTGTCC
 AACAGTCAAGCAGTGGCTCAACACCACAGGCAGTAATTCGGTGCACAGGTCTCACTGTCTACCCCC
 AGATGCACACACAGCCATCTCCACATCTCCCATCGACCGCATGGTTTACCGCAGCATCCGACGGTTC
 CCCACACCCAGCACCCACACCCACAGCAACACAGCCAGTCCAGTCCCCTCACCCACAGCATCCCTCTCCA
 CATCAACACATACAGCACCATCCGAACCATCAGCATCAGACGTTAACACATCAGGCACCCCCACCCCCAC
 AACAGGTATCCTGTAATTTCTGGTGTTCAAATGATTGGTATGCGACACTTGATATGCTAAAAAGAAAGCTG
 TCGAATTGCCAGCAGTGTAAATGGTGCAGATGTAGACCTTTCACAGTTTCAAGGTCTGATGGAGAGTATG
 AGACAGGCAGATCTAAGAAGTGGTCTTAGACCAGGTTAGTTTCCGATCTTTGTTCTCTTAAATC
 AGTTCTTTACACAACTGGCCTTATACATTCACAGAGTAATGTTCAACAAATGTTTGCATGGTGCAT
 GCATCAACAAAACCTTCCCAACACATTGGAACAGGAAATTTGTACATAGATTCTAGGCAAAATCTCCCT
 CCTTCAGTGATGCCACCCCTGGTTATCCTCATATCCACAGGCACTCAGCACTCCAGGAACAACGATGG
 CAGGCCATCACAGAGCCATGAACCAGCAGCACATGATGCCTTCCCAAGCCTTCCAGATGCGGCGTCCCT
 GCCTCCAGATGACATCCAGGATGACTTTGATTGGGATTCAATTGTG

ACGCGTACGCGGCCGCTCGAGCAGAACTCATCTCAGAAGAGGATCTGGCAGCAAATGATATCCTGGATT
 ACAAGGATGACGACGATAAGGTTTAA

Protein Sequence:

>RC219327 representing NM_014947
 Red=Cloning site Green=Tags(s)

MGLYGQACPSVTSRMTSELESSLTSMDWLPQLTMRAAIQKSDATQNAHGTGISKKNALLDPNTTLDQEE
 VQHKDKGKPPYSYASLITFAINSSPKKMTLSEIYQWICDNFPYREAGSGWKNSIRHNLNLSKCFKLVKVP
 RSKDDPGKGSYWAIDTNPKEALPTRPKKRARSVERASTPYSIDSDSLGMECIISGSASPTLAINTVTNK
 VTLYNTDQDGS DPRSSLNNSLSDQSLASVNLNSVGSVHSYTPVTSHPESVVSQSLTPQQQPQYNLPERDK
 QLLFSEYNFEDLSAFRSLYKSVFEQSLSQQLMNIPESSQSHTSCTYQHSPSSTVSTHPSNQSSLS
 NSHGSGLNTTGSNSVAQVSLSHPQMHTQSPHPHRPHGLPQHPQRSHPAPHPQQHSQLQSPHPQHPSP
 HQHIQHHPNHQHQTLTHQAPPPQVSCNSGVSNDWYATLDMLEKESCRIASSVNWSVDVLSQFQGLMESM
 RQADLKNWSLDQVQFADLCSLNFQFTQTGLIHSQSNVQQNVCHGAMHPTKPSQHIGTGNLYIDSRQNL
 PSVMPPPGYPHIPQALSTPGTTMAGHHRAMNQQHMMPSQAFQMRSLPPDDIQDDFDWDSIV

TRTRPLEQKLISEEDLAANDILDYKDDDDKV

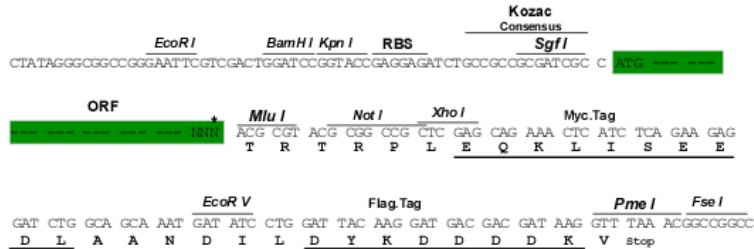
Chromatograms:

https://cdn.origene.com/chromatograms/mg2975_g01.zip

Restriction Sites: SgfI-MluI

Cloning Scheme:

Cloning sites used for ORF Shuttling:



* The last codon before the Stop codon of the ORF

ACCN: NM_014947

ORF Size: 1866 bp

OTI Disclaimer: The molecular sequence of this clone aligns with the gene accession number as a point of reference only. However, individual transcript sequences of the same gene can differ through naturally occurring variations (e.g. polymorphisms), each with its own valid existence. This clone is substantially in agreement with the reference, but a complete review of all prevailing variants is recommended prior to use. [More info](#)

OTI Annotation: This clone was engineered to express the complete ORF with an expression tag. Expression varies depending on the nature of the gene.

Components: The ORF clone is ion-exchange column purified and shipped in a 2D barcoded Matrix tube containing 10ug of transfection-ready, dried plasmid DNA (reconstitute with 100 ul of water).

Reconstitution Method:

1. Centrifuge at 5,000xg for 5min.
2. Carefully open the tube and add 100ul of sterile water to dissolve the DNA.
3. Close the tube and incubate for 10 minutes at room temperature.
4. Briefly vortex the tube and then do a quick spin (less than 5000xg) to concentrate the liquid at the bottom.
5. Store the suspended plasmid at -20°C. The DNA is stable for at least one year from date of shipping when stored at -20°C.

RefSeq: [NM_014947.5](#)

RefSeq Size: 5246 bp

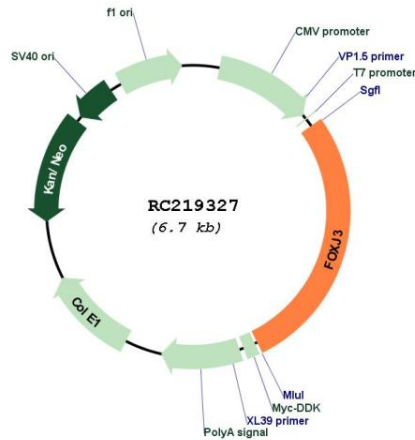
RefSeq ORF: 1869 bp

Locus ID: 22887

UniProt ID: [Q9UPW0](#)

Cytogenetics: 1p34.2
Domains: FH
MW: 68.8 kDa
Gene Summary: Transcriptional activator of MEF2C involved in the regulation of adult muscle fiber type identity and skeletal muscle regeneration.[UniProtKB/Swiss-Prot Function]

Product images:



Circular map for RC219327