

## Product datasheet for **RC219326**

### ZNF565 (NM\_001042474) Human Tagged ORF Clone

#### Product data:

Product Type:	Expression Plasmids
Product Name:	ZNF565 (NM_001042474) Human Tagged ORF Clone
Tag:	Myc-DDK
Symbol:	ZNF565
Mammalian Cell Selection:	Neomycin
Vector:	pCMV6-Entry (PS100001)
E. coli Selection:	Kanamycin (25 ug/mL)



[View online »](#)

**ORF Nucleotide Sequence:**

>RC219326 ORF sequence  
 Red=Cloning site Blue=ORF Green=Tags(s)

TTTTGTAATACGACTCACTATAGGGCGGCCGGAATTCGTCGACTGGATCCGGTACCGAGGAGATCTGCC  
 GCC**GCGATCGCC**

ATGGCCCAGGGACTGGTGACATTCAGGGACGTGGCCATAGAGTTCTCTCTGGAAGATGGAAGTGCCTGG  
 AACCTGCTCAGAGGGACTTGTACAGGGAGGTGACTCTGGAGAAGCTTTGGTCACTTGGCCTCACTAGGACT  
 CTCCATTTCTAAGCCTGATGTCGCTCCTTATTGGAGCAAGGAAAGAGCCCTGGATGATTGCAAAATGAT  
 GTGACAGGACCATGGTGCCAGACTTGGAGTCCAGGTGTGAGAAATTTCTACAAAAGACATTTTTGAAA  
 TCGGGGCACTCACTGGGAGATAATGGAAGCCTTAAATGCAGTGACCTGGAGGGCTCCGATTTTAGAGC  
 TGACTGGGAATGCGAAGGCCAGTTTGGAGACAAGTCAATGAAGAGTGCTATTTTAAAGCAAGTGAACGTC  
 ACCTATGGACATATGCCCGTGTCCAGCATCACACGTCTCACACTGTACGTGAGCAGGAGGAGACTGGT  
 AGAAACTGATGGAATGTCATGAATGTGGAAAGCATTAGCCGTGGCTCACACCTTATTCAACATCAGAA  
 AACTCACACTGGTAAAAACCTTTGGATGTAAGGAATGTGGAAAGCCTTCAGCCGTGCCTCACACCTT  
 GTTCAGCATCAGAGAATTCACACGGGTGAGAAACCTTATGACTGTAAAGACTGTGGGAAGGCCTTTGGTC  
 GTACATCAGAAGTATTCTACATCAGAGACTTCATACTGGTGTCAAACCTTATGAATGTAAGAATGTGG  
 GAAGACCTTTAGGCAGCATTACAGCTGATTCTGCATCAAAGAAGTACACAGGGCAGAAACCTACGTA  
 TGTAAGACTGTGGCAAGGCTTTCATTCGTGGCTCCCAACTCACTGTGCATCGGAGAATCCACACAGGGG  
 CCAGACCTATGAGTGTAAAGAATGCGGGAAAGCCTTTAGACAGCACTCACAGCTGACTGTACACAGCG  
 AATCCACACTGGTGAAGAACCTACGAGTGTAAAGGAATGCGGAAAGGCTTTATTACAGCTCAGAAGTT  
 ACTCGACATCAAAGAATTCATTCGGGGAGAAACCTATGAGTGTAAAGGAATGTGGGAAGGCCTTCAGAC  
 AGCAGCACAGCTCACACGACATCAGAGAGTCCATACTGGCAGCAGACCCTATGAATGTAAGGACTGCGG  
 GAAGGCATTTAGTCGTAGCTCATACCTCATTCAACATCAAAGAATTCATACAGGTGACAAACCTACGAA  
 TGTAAGGAATGTGGGAAGGCCTTTATTCGTGTTTCAACTGACTCATCATCAGGGAATTCACACTTGTG  
 AGAAACCTATGAATGCAGGGAGTGTGGAATGGCCTTTATTCGTAGTTCACTCAACTACCGAACATCAGAG  
 AATTCATCCTGGTATCAAACCTACGAATGTAGAGAGTGTGGCAGGCATTTATTCTGGCTCACTCAACT  
 ATTGAACACTACAGAATTCATACTGGT

**ACGCGT**ACGCGGCCGCTCGAGCAGAAACTCATCTCAGAAGAGGATCTGGCAGCAAATGATATCCTGGATT  
 ACAAGGATGACGACGATAAGGTTTAA

**Protein Sequence:**

>RC219326 protein sequence  
 Red=Cloning site Green=Tags(s)

MAQGLVTFRDVAIEFSLEEWKCLEPAQRDLYREVTLENFGHLASLGLSISKPDVVSLLLEQKPEWMIAND  
 VTGPWCPDLESRCFKLQKDI FEIGAFNWEIMESLKCSDLEGSDFRADWECEGQFERQVNEECYFKQVNV  
 TYGHMPVFQHHTSHTVRSRETGEKLMCEHECGKAFSRGSHLIQHKTHTGEKPFCKEKGKAFSRASHL  
 VQHQRHHTGEKPYDCKDCGKAFGRTELILHQLRHTGVKPYECKEKGKTFRQHSQILHQRHTHTGEKPYV  
 CKDCGKAFIRGSQLTVHRRHTGARPYECKEKGKAFRQHSQILVHQRHHTGEKPYECKEKGKFIHSSEV  
 TRHQRHHSGEKPYECKEKGKAFRQHAQLTRHQRVHTGDRPYECKDCGKAFSRSSYLIIHQHRIHTGDKPYE  
 CKECKGKAFIRVSQLTHHQRHHTCEKPYECEGMAFIRSSQLTEHQRIHPGKPYECEGQAFILGSQL  
 IEHYRIHTG

**TR**TRPLEQKLI SEEDLAANDILDYKDDDDKV

**Chromatograms:**

[https://cdn.origene.com/chromatograms/mk6364\\_g02.zip](https://cdn.origene.com/chromatograms/mk6364_g02.zip)

**Restriction Sites:**

Sgfl-MluI

**Cloning Scheme:**


**ACCN:** NM\_001042474

**ORF Size:** 1497 bp

**OTI Disclaimer:** The molecular sequence of this clone aligns with the gene accession number as a point of reference only. However, individual transcript sequences of the same gene can differ through naturally occurring variations (e.g. polymorphisms), each with its own valid existence. This clone is substantially in agreement with the reference, but a complete review of all prevailing variants is recommended prior to use. [More info](#)

**OTI Annotation:** This clone was engineered to express the complete ORF with an expression tag. Expression varies depending on the nature of the gene.

**Components:** The ORF clone is ion-exchange column purified and shipped in a 2D barcoded Matrix tube containing 10ug of transfection-ready, dried plasmid DNA (reconstitute with 100 ul of water).

- Reconstitution Method:**
1. Centrifuge at 5,000xg for 5min.
  2. Carefully open the tube and add 100ul of sterile water to dissolve the DNA.
  3. Close the tube and incubate for 10 minutes at room temperature.
  4. Briefly vortex the tube and then do a quick spin (less than 5000xg) to concentrate the liquid at the bottom.
  5. Store the suspended plasmid at -20°C. The DNA is stable for at least one year from date of shipping when stored at -20°C.

**RefSeq:** [NM\\_001042474.2](#), [NP\\_001035939.1](#)

**RefSeq Size:** 2168 bp

**RefSeq ORF:** 1500 bp

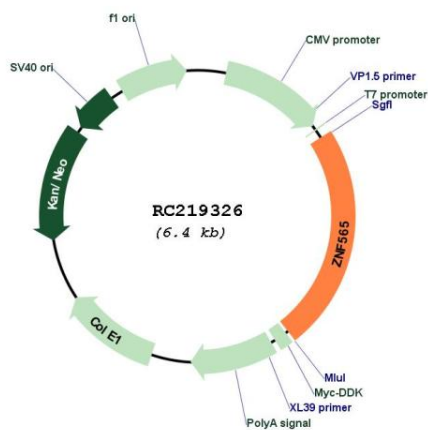
**Locus ID:** 147929

**UniProt ID:** [Q8N9K5](#)

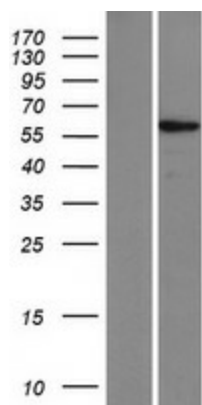
**Cytogenetics:** 19q13.12

**Protein Families:** Transcription Factors  
**MW:** 57.8 kDa  
**Gene Summary:** May be involved in transcriptional regulation.[UniProtKB/Swiss-Prot Function]

**Product images:**



Circular map for RC219326



Western blot validation of overexpression lysate (Cat# [LY420928]) using anti-DDK antibody (Cat# [TA50011-100]). Left: Cell lysates from untransfected HEK293T cells; Right: Cell lysates from HEK293T cells transfected with RC219326 using transfection reagent MegaTran 2.0 (Cat# [TT210002]).