

Product datasheet for **RC219325**

ECE2 (EEF1AKMT4) (NM_001100121) Human Tagged ORF Clone

Product data:

Product Type:	Expression Plasmids
Product Name:	ECE2 (EEF1AKMT4) (NM_001100121) Human Tagged ORF Clone
Tag:	Myc-DDK
Symbol:	ECE2
Synonyms:	EEF1AKMT4
Mammalian Cell Selection:	Neomycin
Vector:	pCMV6-Entry (PS100001)
E. coli Selection:	Kanamycin (25 ug/mL)



[View online »](#)

ORF Nucleotide Sequence:

>RC219325 representing NM_001100121
 Red=Cloning site Blue=ORF Green=Tags(s)

TTTTGTAATACGACTCACTATAGGGCGGCCGGGAATTCGTCGACTGGATCCGGTACCGAGGAGATCTGCC
 GCC**CGGATCGCC**

ATGAACGTCGCGCTGCAGGAGCTGGGAGCTGGCAGCAACATGGTGGAGTACAACGGGCCACGCTTCGGG
 ATGAAGACGCACCCGAGACCCCGTAGAGGGCGGGCCCTCCCGGACGCCATGGAGGTGGGATTCCAGAA
 GGGGACAAGACAGCTGTTAGGCTCACGCACGCAGCTGGAGCTGGTCTTAGCAGGTGCCTCTACTGCTG
 GCTGCACTGCTTCTGGGCTGCCTTGTGGCCCTAGGGGTCCAGTACCACAGAGACCCATCCACAGCACCT
 GCCTTACAGAGGCCTGCATTGAGTGGCTGAAAAATCCTGGAGTCCCTGGACCGAGGGGTGAGCCCTG
 TGAGGACTTTTACCAGTCTCCTGTGGGGCTGGATTCCGAGGAACCCCTGCCCGATGGGCGTTCTCGC
 TGGAACACCTTCAACAGCCTCTGGGACAAAACCAGGCCATACTGAAGCACCTGCTTAAAAACCCACT
 TCAACTCCAGCAGTGAAGCTGAGCAGAAGACACAGCGCTTCTACCTATCTTGCCTACAGGTGGAGCGCAT
 TGAGGAGCTGGGAGCCAGCCACTGAGAGACCTCATTGAGAAGATTGGTGGTTGGAACATTACGGGGCCC
 TGGGACCAGGACAACCTTATGGAGGTGTTGAAGGCAGTAGCAGGGACCTACAGGGCCACCCCATCTTCA
 CCGTCTACATCAGTGCCACTCTAAGAGTTCACACAGCAATGTTATCCAGGTGGACCAGTCTGGGCTCTT
 TCTGCCCTCTCGGGATTACTACTTAAACAGAAGTCCAATGAGAAAAGTGCTCACTGCCTATCTGGATTAC
 ATGGAGGAAGTGGGATGCTGCTGGGTGGGCGGCCACCTCCACGAGGGAGCAGATGCAGCAGGTGCTGG
 AGTTGGAGATACAGCTGGCCAACATCACAGTCCCCAGGACCAGCGGCGCGACGAGGAGAAGATCTACCA
 CAAGATGAGCATTTCGGAGCTGCAGGCTCTGGCGCCCTCCATGGACTGGCTTGAGTTCTGTCTTTCTTG
 CTGTCAACATTGGAGTTGAGTACTCTGAGCCTGTGGTGGTGTATGGGATGGATTATTTGCAGCAGGTG
 CAGAGCTCATCAACCGCACGGAACCAAGCATCCTGAACAATTACCTGATCTGGAACCTGGTCAAAAAGAC
 AACCTCAAGCCTGGACCGACGCTTTGAGTCTGCACAAGAGAAGCTGCTGGAGACCCCTCTATGGCACTAAG
 AAGTCTGTGTGCCGAGGTGGCAGACCTGCATCTCCAACACGGATGACGCCCTTGCTTTGCTTTGGGGT
 CCCTCTTCGTGAAGGCCACGTTTACCAGCAAAGCAAAGAAAATTGCAGAGGGGATGATCAGCGAAAATCCG
 GACCGCATTTGAGGAGGCCCTGGGACAGCTGGTTTGGATGGATGAGAAGACCCGCCAGGCAGCAAGGAG
 AAAGCAGATGCCATCTATGATATGATTGGTTTCCAGACTTTATCCTGGAGCCCAAAGAGCTGGATGATG
 TTTATGACGGGTACGAAATTTCTGAAGATCTTTCTTCCAAAACATGTTGAATTTGTACAACCTTCTCTGC
 CAAGGTTATGGCTGACCAGCTCCGCAAGCCTCCAGCCGAGACCAGTGGAGCATGACCCCCAGACAGTG
 AATGCCTACTACCTTCCAATAAGAATGAGATCGTCTTCCCCGTGGCATCCTGCAGGCCCTTCTATG
 CCCGCAACCACCCCAAGGCCCTGAACCTCGGTGGCATCGGTGTGGTCATGGGCCATGAGTTGACGCATGC
 CTTTGATGACCAAGGGCGCGAGTATGACAAAGAAGGGAACCTGCGGCCCTGGTGGCAGAATGAGTCCCTG
 GCAGCCTTCCGGAACCACACGGCCTGCATGGAGGAACAGTACAATCAATACCAGGTCAATGGGGAGAGGC
 TCAACGGCCGCCAGACGCTGGGGGAGAACATTGCTGACAACGGGGGGCTGAAGGCTGCCTACAATGCTTA
 CAAAGCATGGCTGAGAAAGCATGGGGAGGAGCAGCAACTGCCAGCCGTGGGGCTCACAACCACCAGCTC
 TTCTTCGTGGGATTTGCCAGGTGTGGTGTCTCGGTCCGCACACCAGAGAGCTCTCACGAGGGGCTGGTGA
 CCGACCCCAACAGCCCTGCCCGCTTCCGCGTGTGGGCACTCTCCTCAACTCCCGTGACTTCTGCGGCA
 CTTGCGCTGCCCTGTGGCTCCCCATGAACCCAGGGCAGCTGTGTGAGGTGTGG

ACGCGTACGCGGCCGCTCGAGCAGAACTCATCTCAGAAGAGGATCTGGCAGCAAATGATATCCTGGATT
 ACAAGGATGACGACGATAAGGTTTAA

Protein Sequence: >RC219325 representing NM_001100121
 Red=Cloning site Green=Tags(s)

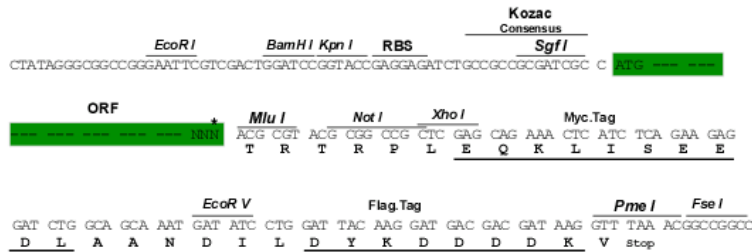
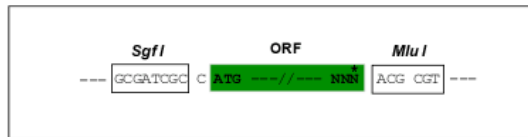
MNVALQELGAGSNMVEYKRATLRDEDAPETPVEGGASPDAMEVGFQKQTRQLLSRTQLELVLGASLLL
 AALLLGLCLVALGVQYHRDPSHSTCLTEACIRVAGKILESLDRGVSPCEDFYQFSCGGWIRRNPLPDGRSR
 WNTFNSLWDQNQAILKHLENTTFNSSSEAEQKTQRFYLSCLQVERIEELGAQPLRDLIEKIGWNITGP
 WDQDNFMEVLKAVAGTYRATPFFTVYISADSKSSNSNVIQVDQSGFLFPSRDYLLNRTANEKVLTAFLDY
 MEELGMLLGGPRTSTREQMQVLELEIQLANITVPQDQRRDEEKIYHKMSISELQALAPSMDWLEFLSFL
 LSPLELSDSEPVVYGM DYLQQVSELINRTEPSILNNYL IWNLVQKTTSSLDRRFESAQEKLELTYGTK
 KSCVPRWQTCISNTDDALGFALGSLFVKATFDRQSKEIAEGMISEIRTAFAEEALGQLVWMDEKTRQAAKE
 KADAIYDMIGFPDFILEPKELDDVYDGYEISEDSFFQNMNLNLYNFSKVMADQLRPPSRDQWSMTPQTV
 NAYYLPTKNEIVFPAGILQAPFYARNHPKALNFGGIGVVMGHELTHAFDDQGREYDKEGNLRPWQWQNESL
 AAFRNHTACMEEQYNQYQVNGERLNGRQTLGENIADNGGLKAAYNAYKAWLRKHGEEQQLPAVGLTNHQL
 FFVGAQVWC SVRTPESSHEGLVTDPHSPARFRVLGTLNSRDFLRHFGCPV GSPMNP GQLCEVW

TRTRPLEQKLI SEEDLAANDILDYKDDDDKV

Restriction Sites: SgfI-MluI

Cloning Scheme:

Cloning sites used for ORF Shuttling:



* The last codon before the Stop codon of the ORF

ACCN: NM_001100121

ORF Size: 2295 bp

OTI Disclaimer: The molecular sequence of this clone aligns with the gene accession number as a point of reference only. However, individual transcript sequences of the same gene can differ through naturally occurring variations (e.g. polymorphisms), each with its own valid existence. This clone is substantially in agreement with the reference, but a complete review of all prevailing variants is recommended prior to use. [More info](#)

OTI Annotation: This clone was engineered to express the complete ORF with an expression tag. Expression varies depending on the nature of the gene.

Components: The ORF clone is ion-exchange column purified and shipped in a 2D barcoded Matrix tube containing 10ug of transfection-ready, dried plasmid DNA (reconstitute with 100 ul of water).

Reconstitution Method:

1. Centrifuge at 5,000xg for 5min.
2. Carefully open the tube and add 100ul of sterile water to dissolve the DNA.
3. Close the tube and incubate for 10 minutes at room temperature.
4. Briefly vortex the tube and then do a quick spin (less than 5000xg) to concentrate the liquid at the bottom.
5. Store the suspended plasmid at -20°C. The DNA is stable for at least one year from date of shipping when stored at -20°C.

RefSeq: [NM_001100121.2](#)

RefSeq Size: 3249 bp

RefSeq ORF: 2298 bp

Locus ID: 9718

UniProt ID: [P0DPP6](#)

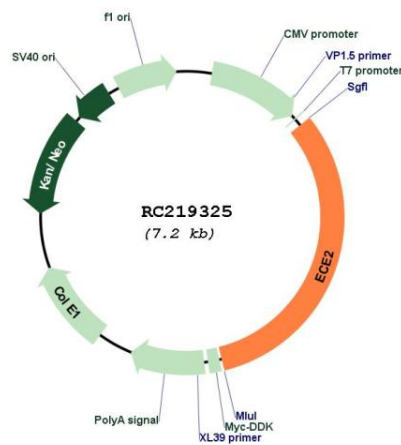
Cytogenetics: 3q27.1

Protein Families: Druggable Genome, Protease, Transmembrane

MW: 86.3 kDa

Gene Summary: Converts big endothelin-1 to endothelin-1. May also have methyltransferase activity (By similarity). May play a role in amyloid-beta processing (By similarity).[UniProtKB/Swiss-Prot Function]

Product images:



Circular map for RC219325