

## Product datasheet for **RC219324**

### **CDC14A (NM\_003672) Human Tagged ORF Clone**

#### **Product data:**

Product Type:	Expression Plasmids
Product Name:	CDC14A (NM_003672) Human Tagged ORF Clone
Tag:	Myc-DDK
Symbol:	CDC14A
Synonyms:	cdc14; DFNB32; DFNB35; DFNB105; hCDC14
Mammalian Cell Selection:	Neomycin
Vector:	pCMV6-Entry (PS100001)
E. coli Selection:	Kanamycin (25 ug/mL)



[View online »](#)

**ORF Nucleotide Sequence:**

>RC219324 representing NM\_003672  
 Red=Cloning site Blue=ORF Green=Tags(s)

TTTTGTAATACGACTCACTATAGGGCGGCCGGAATTCGTCGACTGGATCCGGTACCGAGGAGATCTGCC  
 GCC**GCGATCGCC**

ATGGCAGCGGAGTCAGGGAACTAATCGGGCTTGTGAGTTCATGAAAGATCGGTTATATTTTGCTACTT  
 TAAGGAATAGACCAAAAAGCACAGTAAATACCCACTATTTCTCCATCGATGAGGAGCTGGTCTATGAAAA  
 TTTCTATGCAGATTTTGGACCGCTGAACCTGGCAATGGTGTACAGATATTGCTGCAAACTAAACAAGAAA  
 CTAANAATCATACAGTTTGTCAAGAAAGAAAATAGTGCCTACACCTGTTTTGACCAACGGAAGAGCAA  
 ATGCAGCATTTTTGATAGGTGCCTATGCAGTAATCTATTTAAAGAAGACACCAGAAGAAGCCTACAGAGC  
 ACTCCTGTCTGGCTCAAACCCCTATCTTCCATTAGGGATGCTTCTTTGAAATGCACTTACAAT  
 CTCACCATTCTGACTGTTTGCAGGAATCAGAAAGGATTACAACATGGATTTTTGACTTTGAGACAT  
 TTGATGTGGATGAATATGAACATTATGAGCGAGTTGAAAATGGTACTTCACTGGATTGTTCCAGGAAA  
 ATTTTTAGCATTTAGTGGACCACATCCTAAAAGCAAAATGAGAATGGTTATCCTCTTCAGCCCTGAA  
 GCCTACTTTCTTATTTCAAAAAGCATAATGTGACTGCAGTTGTGAGGCTAAACAAAAGATTTATGAGG  
 CAAAGCGCTTACAGACGCTGGCTTCGAGCACTATGACCTCTTTCATAGATGGCAGCACACCCAGTGA  
 CAACATCGTGCAGGTTTCTGAACATCTGTGAGAACACCGAAGGGGCCATCGCCGTTCACTGCAAGCT  
 GGTCTTGAAGAACAGGGACATTGATAGCCTGTTATGTAATGAAACACTACAGGTTTACACATGCTGAAA  
 TAATTGCTTGGATTAGAATATGCCGGCCAGGCTCTATTATAGGACCCAGCAGCACTTCTGGAAGAAAA  
 ACAAGCATCGTTGGGTCGAAGGACATTTCCGATCCAACTGAAAAATCGACCATCCAGTGAAGGA  
 AGTATTAATAAAATCTTTCTGGCCTAGATGATGTCTATTGGTGGAAATCTTTCAAAAACACAAAACA  
 TGGAACGATTTGGAGAGGATAACTTAGAAGATGATGATGTGAAATGAAAAATGGTATAACCCAGGGAGA  
 CAAACTACGTGCCTTAAAAAGTCAGAGACGCCACGTACCTACCATCCTGTGCATTTAGGTCAGATGAT  
 ACAAAGGACATCCAAGAGCAGTGTCCAGCCTTTCAGATTAAGTTCATCCCTGCAAGGATCTGCAGTTA  
 CTTTGAAGACATCAAAAATGGCACTGTCCCTTCAGCAACGGCCAAGAGGATCAACAGAACTTCTTTGTC  
 TTCGGGTGCCACTGTAAGAAGCTTTTCCATAAACTCCCGGCTAGCCAGTTCTCTAGGGAACTGAAATGCT  
 GCAACAGATGATCCAGAGAACAAAAGACCTCCTCATCTCTAAGGCAGGCTTACAGCCAGCCCGTTTA  
 CCAACCTCTTGAATGGCAGCTCCAGCCAACTACCAGAAATTACCCTGAGCTCAACAATAATCAGTACAA  
 CAGAAGCAGCAACAGCAACGGGGCAACCTGAACAGCCCCCAGGCCCCACAGCGCCAAGACAGAGGAG  
 CACACCACATCCTCCGACCCTCTACACGGGCTTTCTTCTTTCAGCGAGATTCTGAGCCGTCTA  
 TCCCTTCCCTCAGTCTGAATATGTTTCATTAC

**ACGCGT**ACGCGGCCGCTCGAGCAGAAACTCATCTCAGAAGAGGATCTGGCAGCAAATGATATCCTGGATT  
 ACAAGGATGACGACGATAAGGTTTAA

**Protein Sequence:**

>RC219324 representing NM\_003672  
 Red=Cloning site Green=Tags(s)

MAESGELIGACEFMKDRLYFATLRNRPKSTVNTHYFSIDEELVYENFYADFGLNLMVYRYCCKLNKK  
 LKSYSLSRKKIVHYTCFDQRKRANAFLIGAYAVIYLLKKTPEEAYRALLSGSNPPYLPFRDASFNGCTYN  
 LTILDCLQGIKGLQHGFDFETFDVDEYEHYERVENGFNWIIVPGKFLAFSGPHPKSKIENGYPLHAPE  
 AYFPYFKKHNVAVVRLNKKIYEAKRFTDAGFEHYDLFFIDGSTPSDNI VRRFLNICENTEGAIIVHCKA  
 GLGRTGLTIACYVMKHYRFTHAEIIAWIRICRPGSIIGPQQHFLEEKQASLWVQGDIFRSKLNKRPSSSEG  
 SINKILSGLDDMSIGGNLSKTQNMERFGEDNLEDDVEMKNGITQGDKL RALKSQRPRTSPSCAFRSDD  
 TKGHPRAVSQPFRLSSSLQGSVTLKTSKMALSPSATAKRINRTSLSSGATVRSFSINSRLASSLGNLNA  
 ATDDPENKKTSSSSKAGFTASPFNLLNGSSQPTRNYPELNNNQYNRSSNSNGGNLNSPPGPHSAKTEE  
 HTTILRPSYTGLSSSSARFLSRSIPSLQSEYVHY

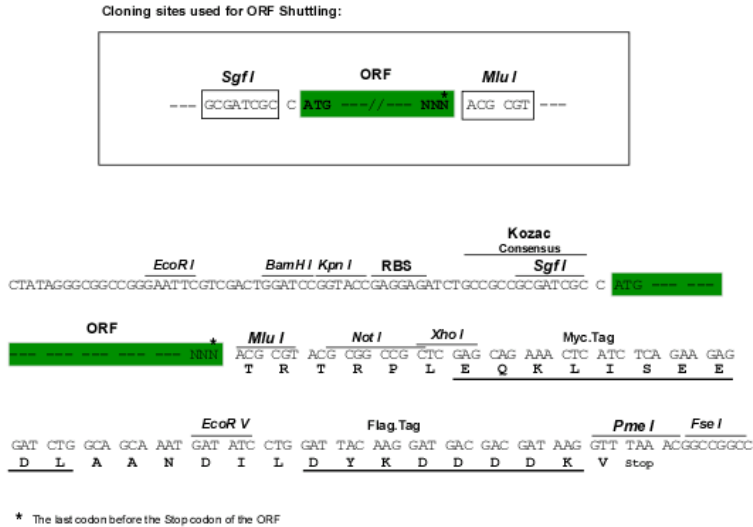
**TR**TRPLEQKLISEEDLAANDILDYKDDDDKV

**Chromatograms:**

[https://cdn.origene.com/chromatograms/mk8068\\_h07.zip](https://cdn.origene.com/chromatograms/mk8068_h07.zip)

Restriction Sites: SgfI-MluI

Cloning Scheme:



ACCN: NM\_003672

ORF Size: 1782 bp

OTI Disclaimer: The molecular sequence of this clone aligns with the gene accession number as a point of reference only. However, individual transcript sequences of the same gene can differ through naturally occurring variations (e.g. polymorphisms), each with its own valid existence. This clone is substantially in agreement with the reference, but a complete review of all prevailing variants is recommended prior to use. [More info](#)

OTI Annotation: This clone was engineered to express the complete ORF with an expression tag. Expression varies depending on the nature of the gene.

Components: The ORF clone is ion-exchange column purified and shipped in a 2D barcoded Matrix tube containing 10ug of transfection-ready, dried plasmid DNA (reconstitute with 100 ul of water).

Reconstitution Method:

1. Centrifuge at 5,000xg for 5min.
2. Carefully open the tube and add 100ul of sterile water to dissolve the DNA.
3. Close the tube and incubate for 10 minutes at room temperature.
4. Briefly vortex the tube and then do a quick spin (less than 5000xg) to concentrate the liquid at the bottom.
5. Store the suspended plasmid at -20°C. The DNA is stable for at least one year from date of shipping when stored at -20°C.

RefSeq: [NM\\_003672.4](#)

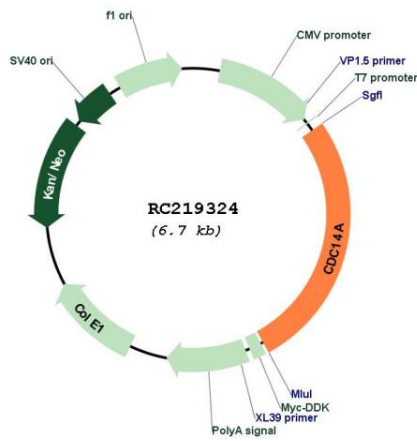
RefSeq Size: 4262 bp

RefSeq ORF: 1785 bp

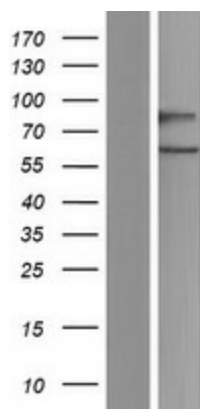
Locus ID: 8556

<b>UniProt ID:</b>	<u><a href="#">Q9UNH5</a></u>
<b>Cytogenetics:</b>	1p21.2
<b>Domains:</b>	Y_phosphatase, DSPc, PTPc_motif
<b>Protein Families:</b>	Druggable Genome, Phosphatase
<b>Protein Pathways:</b>	Cell cycle
<b>MW:</b>	66.4 kDa
<b>Gene Summary:</b>	The protein encoded by this gene is a member of the dual specificity protein tyrosine phosphatase family. It is highly similar to <i>Saccharomyces cerevisiae</i> Cdc14, a protein tyrosine phosphatase involved in the exit of cell mitosis and initiation of DNA replication, suggesting a role in cell cycle control. This protein has been shown to interact with, and dephosphorylate tumor suppressor protein p53, and is thought to regulate the function of p53. Alternative splicing of this gene results in several transcript variants encoding distinct isoforms. [provided by RefSeq, Jul 2008]

### Product images:



Circular map for RC219324



Western blot validation of overexpression lysate (Cat# [LY418511]) using anti-DDK antibody (Cat# [TA50011-100]). Left: Cell lysates from untransfected HEK293T cells; Right: Cell lysates from HEK293T cells transfected with RC219324 using transfection reagent MegaTran 2.0 (Cat# [TT210002]).