

Product datasheet for **RC219323**

CYP3A43 (NM_022820) Human Tagged ORF Clone

Product data:

Product Type:	Expression Plasmids
Product Name:	CYP3A43 (NM_022820) Human Tagged ORF Clone
Tag:	Myc-DDK
Symbol:	CYP3A43
Mammalian Cell Selection:	Neomycin
Vector:	pCMV6-Entry (PS100001)
E. coli Selection:	Kanamycin (25 ug/mL)



[View online »](#)

ORF Nucleotide Sequence:

>RC219323 representing NM_022820
 Red=Cloning site Blue=ORF Green=Tags(s)

TTTTGTAATACGACTCACTATAGGGCGGCCGGAATTCGTCGACTGGATCCGGTACCGAGGAGATCTGCC
 GCC**CGGATCGCC**

ATGGATCTCATTCCAACCTTTGCCATGGAACATGGGTTCTTGTGGCTACCAGCCTGGTACTCCTCTATA
 TTTATGGACCCATTACATAAACTTTTTAAGAAGCTGGGAATTCCTGGGCCAACCCCTCTGCCTTTCT
 GGGAACTATTTTGTCTACCTTAGGGTCTTTGGAATTTTGACAGAGAATGTAATGAAAAATACGGAGAA
 ATGTGGGGCTGTATGAGGGCAACAGCCCATGCTGGTCATCATGGATCCCGACATGATCAAAACAGTGT
 TAGTGAAGAATGTTACTCTGTCTTCAAAACCAGATGCCTTTAGGTCCAATGGGATTTCTGAAAAGTGC
 CTTAAGTTTTGCTGAAGATGAAGAATGGAAGAGAATACGAACATTGCTATCTCCAGCTTCCACCAGTGA
 AAATCAAGGAAATGGTCCCATCACTTGAAGATTTCTTTGGGCCCTACCCATGGATGTAATCACTGGCAC
 CAGAGAACAGCAAGTCCATCACTTGAAGATTTCTTTGGGCCCTACCCATGGATGTAATCACTGGCAC
 ATTATTTGGAGTGAAGTGGATTCTCTCAACAATCCACAAGATCCCTTTCTGAAAAATATGAAGAAGCTT
 TAAAAATTGGATTTTTGGATCCCTTTTACTCTTAATATCACTCTTTCCATTTCTACCCAGTTTTTG
 AAGCCCTAAATATCGGTTTGTTCAAAAGATGTTACCCATTTTTAAAAAATCCATTGAAAGGATGAA
 AGAAAGTCGCCTCAAAGATAACAAAAGCATCGAGTAGATTTCTTTCAACAGATGATCGACTCCCAGAA
 TCCAAAGAAACAAAGTCCATAAAGCTCTGTCTGATCTGGAGCTTGTGGCCAGTCAATTATCATCATTT
 TTGCTGCCTATGACACAACAGCACCCTCTCCCTTCTATTATGTATGAAGTGGCCACTCACCTGATGT
 CCAGCAGAAATGCAGGAGGAGATTGACGCAGTTTTACCAATAAGGCACCTGTACCTACGATGCCCTG
 GTACAGATGGAGTACCTTGACATGGTGGTGAATGAAACGCTCAGATTATCCAGTTGTTAGTAGAGTTA
 CGAGAGTCTGCAAGAAAGATATTGAAATCAATGGAGTGTTCATTTCCAAAGGGTTAGCAGTATGGTTCC
 AATCTATGCTCTTACCATGACCCAAAGTACTGGACAGAGCCTGAGAAGTTCTGCCCTGAAAGTAGGTTT
 AGTAAGAAGAACAAGGACAGCATAGATCTTTACAGATACATACCTTTTGGAGCTGGACCCCGAAACTGCA
 TTGGCATGAGTTTGTCTCACAAACATAAAACTTGTGTCTATTAGAGCACTGCAGAACTTCTCCTTCAA
 ACCTTGTAAAGAGACTCAGATCCACTGAAATTAGACAATCTACCAATCTTCAACCAGAAAAACCTATT
 GTTCTAAAAGTGCCTTAAGAGATGGGATTACAAGTGGACCC

ACGCGTACGCGGCCGCTCGAGCAGAAACTCATCTCAGAAGAGGATCTGGCAGCAAATGATATCCTGGATT
 ACAAGGATGACGACGATAAGGTTTAA

Protein Sequence:

>RC219323 representing NM_022820
 Red=Cloning site Green=Tags(s)

MDLIPNFAMETWVLVATSLVLLYIYGTHSHKLFKKLGIPGPTPLPFLGTILFYLRGLWNFDRECNEKYGE
 MWGLYEQQPMLVIMDPDIKTVLVKECYSVFTNQMPGPMGFLKSALSFAEDEEWKIRITLLSPAFTSV
 KFKEMVPIISQCDMLVRSLRQEAENSKSINLKDFFGAYTMDVITGTLFGVNLDSLNNPQDPFLKNMKKL
 LKLDLDFPFLLLISLFPFLTPVFEALNIGLFPKDVTHFLKNSIERMKESRLKDKQKHRVDFQMQMIDSQN
 SKETKSHKALSDELVAQSIIIFAAAYDTTSTLTPFIMYELATHPDVQQLQEEIDAVLPNKAPVTDAL
 VQMEYLDMVVNETLRLFPVSRVTRVCKKIDIEINGVFIKGLAVMVPYIYALHHPKYWTEPEKFCPESRF
 SKKNKDSIDLRYIPFGAGPRNCIGMRFALTNIKLAVIRALQNF SFKPKETQIPLKLDNLPILQPEKPI
 VLKVHLRDGITS GP

TRTRPLEQKLI SEEDLAANDILDYKDDDDKV

Chromatograms:

https://cdn.origene.com/chromatograms/ja1148_a10.zip

Restriction Sites:

Sgfl-MluI

Cloning Scheme:

ACCN: NM_022820

ORF Size: 1512 bp

OTI Disclaimer: Due to the inherent nature of this plasmid, standard methods to replicate additional amounts of DNA in E. coli are highly likely to result in mutations and/or rearrangements. Therefore, OriGene does not guarantee the capability to replicate this plasmid DNA. Additional amounts of DNA can be purchased from OriGene with batch-specific, full-sequence verification at a reduced cost. Please contact our customer care team at custsupport@origene.com or by calling 301.340.3188 option 3 for pricing and delivery.

The molecular sequence of this clone aligns with the gene accession number as a point of reference only. However, individual transcript sequences of the same gene can differ through naturally occurring variations (e.g. polymorphisms), each with its own valid existence. This clone is substantially in agreement with the reference, but a complete review of all prevailing variants is recommended prior to use. [More info](#)

OTI Annotation: This clone was engineered to express the complete ORF with an expression tag. Expression varies depending on the nature of the gene.

Components: The ORF clone is ion-exchange column purified and shipped in a 2D barcoded Matrix tube containing 10ug of transfection-ready, dried plasmid DNA (reconstitute with 100 ul of water).

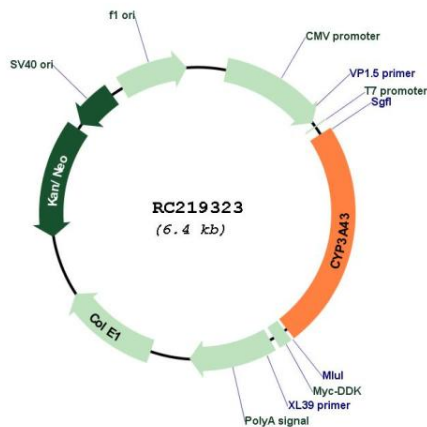
- Reconstitution Method:**
1. Centrifuge at 5,000xg for 5min.
 2. Carefully open the tube and add 100ul of sterile water to dissolve the DNA.
 3. Close the tube and incubate for 10 minutes at room temperature.
 4. Briefly vortex the tube and then do a quick spin (less than 5000xg) to concentrate the liquid at the bottom.
 5. Store the suspended plasmid at -20°C. The DNA is stable for at least one year from date of shipping when stored at -20°C.

RefSeq: [NM_022820.5](#)

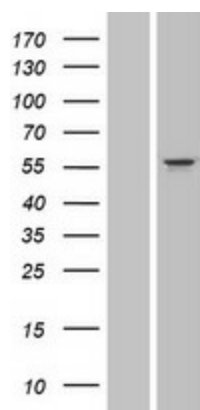
RefSeq Size: 2167 bp
RefSeq ORF: 1515 bp
Locus ID: 64816
UniProt ID: [Q9HB55](#)
Cytogenetics: 7q22.1
Protein Families: Druggable Genome, Transmembrane
Protein Pathways: Drug metabolism - cytochrome P450, Drug metabolism - other enzymes, Linoleic acid metabolism, Metabolic pathways, Metabolism of xenobiotics by cytochrome P450, Retinol metabolism
MW: 57.6 kDa

Gene Summary: This gene encodes a member of the cytochrome P450 superfamily of enzymes. The cytochrome P450 proteins are monooxygenases which catalyze many reactions involved in drug metabolism and synthesis of cholesterol, steroids and other lipids. The encoded protein has a low level of testosterone hydroxylase activity, and may play a role in aging mechanisms and cancer progression. This gene is part of a cluster of cytochrome P450 genes on chromosome 7q21.1. Alternate splicing results in multiple transcript variants encoding different isoforms. [provided by RefSeq, Jul 2013]

Product images:



Circular map for RC219323



Western blot validation of overexpression lysate (Cat# [LY411527]) using anti-DDK antibody (Cat# [TA50011-100]). Left: Cell lysates from untransfected HEK293T cells; Right: Cell lysates from HEK293T cells transfected with RC219323 using transfection reagent MegaTran 2.0 (Cat# [TT210002]).