

Product datasheet for RC219316

HFE (NM_139006) Human Tagged ORF Clone

Product data:

Product Type:	Expression Plasmids
Product Name:	HFE (NM_139006) Human Tagged ORF Clone
Tag:	Myc-DDK
Symbol:	HFE
Synonyms:	HFE1; HH; HLA-H; MVCD7; TFQTL2
Mammalian Cell Selection:	Neomycin
Vector:	pCMV6-Entry (PS100001)
E. coli Selection:	Kanamycin (25 ug/mL)
ORF Nucleotide Sequence:	>RC219316 representing NM_139006 Red=Cloning site Blue=ORF Green=Tags(s)

TTTTGTAATACGACTCACTATAGGGCGGCCGGAATTCGTCGACTGGATCCGGTACCGAGGAGATCTGCC
GCC**CGATCGCC**

ATGGGCCCGAGCCAGGCCGGCGCTTCTCCTCTGATGCTTTTGCAGACCGCGGTCTGCAGGGGCGCT
TGCTGCGTTCACACTCTCTGCACTACCTCTTCATGGGTGCCTCAGAGCAGGACCTTGGTCTTTCCTTGT
TGAAGCTTTGGGTACGTGGATGACCAGCTGTTCTGTTCTATGATCATGAGAGTCGCCGTGGAGCCC
CGAACTCCATGGGTTCCAGTAGAATTTCAAGCCAGATGTGGCTGCAGCTGAGTCAGAGTCTGAAAGGGT
GGGATCACATGTTCACTGTTGACTTCTGGACTATTATGGAAAATCACAACCACAGCAAGGAGTCCCACAC
CCTGCAGGTCATCCTGGGCTGTGAAATGCAAGAAGACAACAGTACCGAGGGCTACTGGAAGTACGGGTAT
GATGGGCAGGACCACCTTGAATTCGCCCTGACACACTGGATTGGAGAGCAGCAGAACCCAGGGCCTGGC
CCACCAAGCTGGAGTGGGAAAGGCACAAGATTCGGGCCAGGCAGAACAGGGCCTACCTGGAGAGGGACTG
CCCTGCACAGCTGCAGCAGTTGCTGGAGCTGGGGAGAGGTGTTTTGGACCAACAAGTACCCTACTACGG
TGTCCGGCCTTGAACCTACTACCCCAAGACATCACCATGAAGTGGCTGAAGGATAAGCAGCAATGGATG
CCAAGGAGTTCGAACCTAAGACGATTTGCCCAATGGGGATGGGACCTACCAGGGCTGGATAACCTTGGC
TGTACCCCTGGGAAGAGCAGAGATATACGTGCCAGTGGAGCAGCCAGGCCTGGATCAGCCCCATT
GTGATCTGGGAGCCCTCACCGTCTGGCACCCATAGTCATTGGAGTCATCAGTGAATTGCTGTTTTGTCTG
TCATCTTGTTCATTGGAATTTTGTTCATAATATTAAGGAAGAGGCGGGTTCAAGAGGAGCCATGGGCA
CTACGTCTTAGCTGAACGTGAG

ACGCGTACGCGGCCGCTCGAGCAGAACTCATCTCAGAAGAGGATCTGGCAGCAATGATATCCTGGATT
ACAAGGATGACGACGATAAGGTTTAA



[View online »](#)

Protein Sequence: >RC219316 representing NM_139006
Red=Cloning site Green=Tags(s)

MGPRARPALLLLMLLQTAVLQGRLLRSHSLHYLFMGASEQDLGLSLFEALGYVDDQLFVFDHESRRVEP
 RTPWVSSRISSQMWLQLSLSLKGWDHMFVDFWTIMENHNHSKESHTLQVILGCEMQEDNSTEGYWKYGY
 DGQDHLFCPDTLDWRAAEPRAWPTKLEWERHKIRARQNRAYLERDCPAQLQQLLELGRGVLDQQVTTLR
 CRALNYYPQNITMKWLKDKQPMDAKEFEPKDVLPNGDGTYQGWITLAVPPGEEQRYTCQVEHPGLDQPLI
 VIWEPSPSGTLVIGVISGIAVFVVILFIGILFIIILRKRQSRGAMGHYVLAERE

TRTRPLEQKLISEEDLAANDILDYKDDDDKV

Chromatograms: https://cdn.origene.com/chromatograms/mk8052_h11.zip

Restriction Sites: SgfI-MluI

Cloning Scheme:



ACCN: NM_139006

ORF Size: 1002 bp

OTI Disclaimer: The molecular sequence of this clone aligns with the gene accession number as a point of reference only. However, individual transcript sequences of the same gene can differ through naturally occurring variations (e.g. polymorphisms), each with its own valid existence. This clone is substantially in agreement with the reference, but a complete review of all prevailing variants is recommended prior to use. [More info](#)

OTI Annotation: This clone was engineered to express the complete ORF with an expression tag. Expression varies depending on the nature of the gene.

Components: The ORF clone is ion-exchange column purified and shipped in a 2D barcoded Matrix tube containing 10ug of transfection-ready, dried plasmid DNA (reconstitute with 100 ul of water).

Reconstitution Method:

1. Centrifuge at 5,000xg for 5min.
2. Carefully open the tube and add 100ul of sterile water to dissolve the DNA.
3. Close the tube and incubate for 10 minutes at room temperature.
4. Briefly vortex the tube and then do a quick spin (less than 5000xg) to concentrate the liquid at the bottom.
5. Store the suspended plasmid at -20°C. The DNA is stable for at least one year from date of shipping when stored at -20°C.

RefSeq: [NM_139006.3](#)

RefSeq Size: 1045 bp

RefSeq ORF: 1005 bp

Locus ID: 3077

UniProt ID: [Q30201](#)

Cytogenetics: 6p22.2

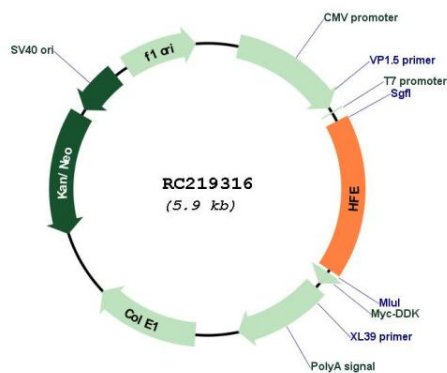
Domains: MHC_I, ig, IGc1

Protein Families: Druggable Genome, Transmembrane

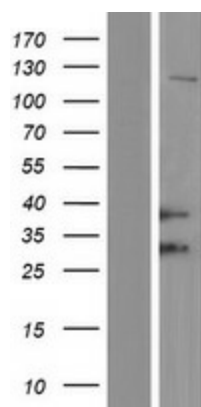
MW: 36.2 kDa

Gene Summary: The protein encoded by this gene is a membrane protein that is similar to MHC class I-type proteins and associates with beta2-microglobulin (beta2M). It is thought that this protein functions to regulate iron absorption by regulating the interaction of the transferrin receptor with transferrin. The iron storage disorder, hereditary haemochromatosis, is a recessive genetic disorder that results from defects in this gene. At least nine alternatively spliced variants have been described for this gene. Additional variants have been found but their full-length nature has not been determined. [provided by RefSeq, Jul 2008]

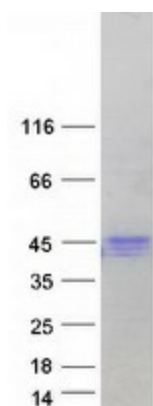
Product images:



Circular map for RC219316



Western blot validation of overexpression lysate (Cat# [LY408433]) using anti-DDK antibody (Cat# [TA50011-100]). Left: Cell lysates from untransfected HEK293T cells; Right: Cell lysates from HEK293T cells transfected with RC219316 using transfection reagent MegaTran 2.0 (Cat# [TT210002]).



Coomassie blue staining of purified HFE protein (Cat# [TP319316]). The protein was produced from HEK293T cells transfected with HFE cDNA clone (Cat# RC219316) using MegaTran 2.0 (Cat# [TT210002]).