

Product datasheet for **RC219309**

SCN11A (NM_014139) Human Tagged ORF Clone

Product data:

Product Type:	Expression Plasmids
Product Name:	SCN11A (NM_014139) Human Tagged ORF Clone
Tag:	Myc-DDK
Symbol:	SCN11A
Synonyms:	FEPS3; HSN7; NaN; NAV1.9; PN5; SCN12A; SNS-2
Mammalian Cell Selection:	Neomycin
Vector:	pCMV6-Entry (PS100001)
E. coli Selection:	Kanamycin (25 ug/mL)



[View online »](#)

Protein Sequence: >RC219309 representing NM_014139
 Red=Cloning site Green=Tags(s)

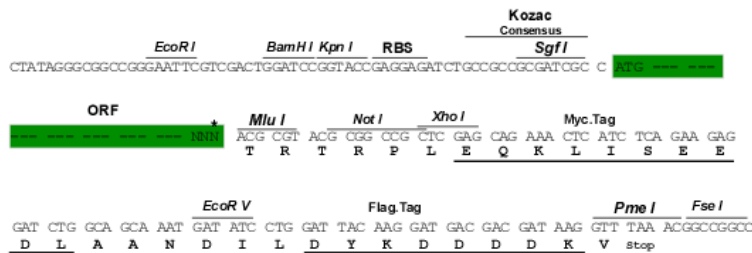
MDDRCYPVIFPDERNFRPFTSDSLAAIEKRIAIQKEKKKSKDQTGEVPPRPQLDLKASRKLPLKLYGDIP
 RELIGKPLEDLDPFYRNHKTfMVLNRKRTIYRFSAKHALFIFGPFNSIRSLAIRVSVHSLFSMFIIGTVI
 INCVFMATGPAKNSNSNNTDIAECVFTGIYIFEALIKILARGFILDEFSLRDPWNWLDIVIGIAIVSY
 IPGITIKLLPLRTRFRVFRALKAISVVSRLKVIIVGALLRSVKKLVNVIILTFCLSFALVGQQLFMGSLN
 LKCSIRDCKNISNPEAYDHCFEKKENSPEFKMCGIWMGNSACSIQYECKHTKINPDYNYTNFDNFGWSFL
 AMFRLMTQDSWEKLYQQLTRTTGLYSVFFFIVVIFLGSFYLINLTLAVVTMAYEEQNKNVAAEIEAKEKM
 FQEAQQLLKEEKEALVAMGIDRSSLTSLETSYFTPKKRKLFGNKKRKSFFLRESGKDQPPGSDSDEDQK
 KPQLLEQTKRLSQNLSDHFDEHGDPLQRQRALSAVSILITITMKEQEKSQEPCLPCGENLASKYL VWNCC
 PQWL CVKVKVLRVTDPFTELAITICIIINTVFLAMEHHKMEASF EKMLNIGNLVFTSIFIAEMCLKIIA
 LDPYHYFRRGWNIFDSIVALLSFADVMNCVLQKRSWPF LRSFVLRVFKLAKSWPTLNTLKIIGNSVGA
 LGSLTVVLVIVIFIFSVGMQLFGRSFNSQKSPKLCNPTGPTVSCLRHWHMGDFWHSFLVVFRLCGEWI
 ENMWECEQANASSSLCVIVFILITVIGKLVVNLFIALLNSFSNEERNGNLEGEARKTKVQLALDRFR
 RAFCFVRHTLEHFCHKWCRKQNL PQQKEVAGGCAAQSKDIIPLMEMKRGSSETQEELGILTSVPKTLGVR
 HDWTWLAPLAEEEDDVEFSGEDNAQRITQPEPEQAYELHQENKKPTSQRVQSVEIDMFSEDEPHLTIQD
 PRKKSVDTSILSECSTIDLQDGFGLPEMVPKQPERCLPKGFCCFPCCSVDKRPWWIWNLRKTCY
 QIVKHSWFESFII FVILLSSGALIFEDVHLENQPKIQELLNCTDIIFTHIFILEMVLKWWAFGFGKYFTS
 AWCCLD FIIIVIVSVTTLINLMELKSFRTLRALRPLRALSQFEGMKVVVNALIGAIPAILNVLLVCLIFWL
 VFCILGVYFFSGKFGKINGTDSVINYTIITNKSQCESGNFSWINQKVNFDNVGNAYLALLQVATFKGWM
 DIIYAADVSTEKEQQPEFESNSLGYIYFVVFIIFGSFFTLNLFIGVIIDNFNQKQLGGQDIFMTEEQK
 KYYNAMKKLGSKKPQKPIPRPLNKCQGLVFDIVTSQIFDIIIIISLIIILNMISMMAESYNQPKAMKSILDH
 LNWFVVI FTLECLIKIFALRQYYFTNGWNL FDCVVVLLSIVSTMI STLENQEHI PFPPTLFRIVRLARI
 GRILRLVRAARGIRTL L FALIMSLPSLFNIGLLLFLIMFIYAILGMNWF SKVNPESGIDDFNFKTFASS
 MLCLFQIST SAGWDSLLSPMLRSKESCSNSENCHLPGIATSYFVSYIIISFLIVNMYIAVILENFNTA
 TEESEDPLGEDDFDI FYEVWEKFDPEATQFIKYSAL SDFADALPEPLRVAKPNKYQFLVMDLPMVSEDRL
 HCMDILFAFTARVLGGSDGLDSMKAMMEK FMEANPLKLYEPIVTTTKRKEEERGAAIIQKAFKRYMMK
 VTKGDQGDQNDLENGPHSPLQTL CNGDLSFGVAKGKVHCD

TRTRPLEQKLISEEDLAANDILDYKDDDDKV

Restriction Sites:
 Cloning Scheme:

SgfI-MluI

Cloning sites used for ORF Shuttling:

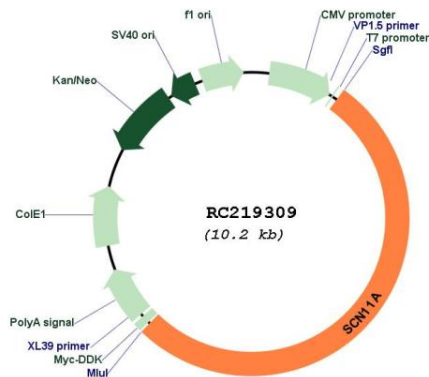


* The last codon before the Stop codon of the ORF

ACCN:	NM_014139
ORF Size:	5373 bp
OTI Disclaimer:	<p>Due to the inherent nature of this plasmid, standard methods to replicate additional amounts of DNA in E. coli are highly likely to result in mutations and/or rearrangements. Therefore, OriGene does not guarantee the capability to replicate this plasmid DNA. Additional amounts of DNA can be purchased from OriGene with batch-specific, full-sequence verification at a reduced cost. Please contact our customer care team at custsupport@origene.com or by calling 301.340.3188 option 3 for pricing and delivery.</p> <p>The molecular sequence of this clone aligns with the gene accession number as a point of reference only. However, individual transcript sequences of the same gene can differ through naturally occurring variations (e.g. polymorphisms), each with its own valid existence. This clone is substantially in agreement with the reference, but a complete review of all prevailing variants is recommended prior to use. More info</p>
OTI Annotation:	This clone was engineered to express the complete ORF with an expression tag. Expression varies depending on the nature of the gene.
Components:	The ORF clone is ion-exchange column purified and shipped in a 2D barcoded Matrix tube containing 10ug of transfection-ready, dried plasmid DNA (reconstitute with 100 ul of water).
Reconstitution Method:	<ol style="list-style-type: none"> 1. Centrifuge at 5,000xg for 5min. 2. Carefully open the tube and add 100ul of sterile water to dissolve the DNA. 3. Close the tube and incubate for 10 minutes at room temperature. 4. Briefly vortex the tube and then do a quick spin (less than 5000xg) to concentrate the liquid at the bottom. 5. Store the suspended plasmid at -20°C. The DNA is stable for at least one year from date of shipping when stored at -20°C.
RefSeq:	NM_014139.1 , NM_014139.2 , NP_054858.1 , NP_054858.2
RefSeq Size:	6500 bp
RefSeq ORF:	5376 bp
Locus ID:	11280
UniProt ID:	Q9UI33
Cytogenetics:	3p22.2
Protein Families:	Druggable Genome, Ion Channels: Sodium, Transmembrane
MW:	204.9 kDa

Gene Summary:

Voltage-gated sodium channels are transmembrane glycoprotein complexes composed of a large alpha subunit with 24 transmembrane domains and one or more regulatory beta subunits. They are responsible for the generation and propagation of action potentials in neurons and muscle. This gene encodes one member of the sodium channel alpha subunit gene family, and is highly expressed in nociceptive neurons of dorsal root ganglia and trigeminal ganglia. It mediates brain-derived neurotrophic factor-evoked membrane depolarization and is a major effector of peripheral inflammatory pain hypersensitivity. Mutations in this gene have been associated with hereditary sensory and autonomic neuropathy type VII and familial episodic pain syndrome-3. Alternative splicing results in multiple transcript variants. [provided by RefSeq, Mar 2017]

Product images:


Circular map for RC219309