

Product datasheet for **RC219308**

DDX11 (NM_030653) Human Tagged ORF Clone

Product data:

Product Type:	Expression Plasmids
Product Name:	DDX11 (NM_030653) Human Tagged ORF Clone
Tag:	Myc-DDK
Symbol:	DDX11
Synonyms:	CHL1; CHLR1; KRG2; WABS
Mammalian Cell Selection:	Neomycin
Vector:	pCMV6-Entry (PS100001)
E. coli Selection:	Kanamycin (25 ug/mL)



[View online »](#)

ORF Nucleotide Sequence:

>RC219308 ORF sequence
 Red=Cloning site Blue=ORF Green=Tags(s)

TTTTGTAATACGACTCACTATAGGGCGGCCGGGAATTCGTCGACTGGATCCGGTACCGAGGAGATCTGCC
 GCC**GCGATCGCC**

ATGGCTAATGAAACACAGAAGGTTGGTGCCATCCATTTTCCCTTTCCCTTACACCCATTCCATCCAGG
 AAGACTTCATGGCAGAGCTGTACCGGGTTTTGGAGGCTGGCAAGATTGGGATATTTGAGAGTCCAACCTGG
 CACTGGGAAGTCCTTAAGTCTTATTTGTGGGGCCCTCTTTGGCTCCGTGACTTTGAACAGAAGAAGCGT
 GAAGAAGAGGCACGACTCCTTAAAAGTGGAACTGGCCCTTACATGATGAGAAAGATGAATCCCTGTGTC
 TGTCTTCTTCTGCGAAGGGGCTGCAGGCACCCCGAGGCCTGCTGGAGAACCAGGCCTGGGTTACTCAGTT
 TGTGCAGAAGAAAGAAGAGAGGGACCTGGTGGACCGACTAAAGGCGGAGCAGGCCAGGAGGAAGCAGCGA
 GAAGAACCCTGCAGCAGCTGCAGCACAGGGTGCAGCTCAAGTATGCAGCCAAGCGCTGAGGCAGGAAG
 AAGAAGAAAGAGAGAATCTCTCCGCCTCAGCAGGGAGATGCTAGAGACAGGCCCGGAGGCTGAGCGGCT
 GGAGCAGCTGGAGTCTGGGGAGGAGGAGCTGGTCTCGCCGAATACGAGAGTGATGAGGAGAAAAAGGTG
 GCGAGCAGAGTGGATGAGGATGAGGATGACCTGGAGGAAGAACACATAACTAAGATTTTACTGTAGTC
 GGACACACTCCCAGCTGGCCAGTTTGTGCATGAGGTGAAGAAGAGCCCTTTGGCAAGGATGTTCCGGCT
 GGTCTCCCTTGGCTCCCGGCAGAACCTTTGTGTAATGAAGACGTGAAAAGCCTAGGTTCTGTGCAGCTT
 ATCAACGACCCGCTGTGTGGACATGCAGAGAAGCAGGCACGAGAAGAAGAAAGGAGCTGAGGAGGAGAAGC
 CAAAGAGGAGGAGGCAGGAGAAGCAGGCAGCCTGCCCTTCTACAACCACGAGCAGATGGGCCTTCTCCG
 GGATGAGGCCCTGGCAGAGGTGAAGGACATGGAGCAGCTGCTGGCCCTTGGGAAGGAGGCCCGGGCTGT
 CCCTATTACGGGAGCCGCTTGCCATCCCTGCAGCCAGCTGGTGGTGTGCCCTATCAGATGCTGCTGC
 ATGCGGCCACTCGCAGGCCCGGGCATCCGGCTGCAGGACCAGTGGTGATCATCGACGAGGCCACAA
 CCTGATCGACACCATCACGGGCATGCACAGCGTGGAGGTGAGCGGCTCCAGCTCTGCCAGGCCATTCC
 CAGCTGCTGCAGTACGTGGAGCGATACGGGAAGCGTTTGAAGGCCAAGAACCCTGATGTACCTGAAGCAGA
 TCCTGTATTTGCTGGAGAAATTCGTGGCTGTGCTAGGGGGGAACATTAAGCAAAATCCCAATACACAGAG
 TCTGTACAGACAGGGACGGAGCTGAAGACCATCAACGACTTTCTTCCAGAGCCAGATCGACAACATC
 AACCTGTTCAAGGTGCAGCGATACTGTGAGAAGAGCATGATCAGCAGAAAGCTCTTTGGATTCACTGAAC
 GGTACGGAGCAGTGTCTCATCCCGGAGCAGCCAAACTGGCTGGGTTTTCAGCAATTCCTGCAGAGCCT
 GCAGCCCAGGACGACTGAAGCTTTCAGCCCTGCAGACGAGAGTCAGGCCAGCACCTCGCAGCAGCT
 TCTCCACTGATGCACATCCAAGGCTTCTGGCAGCTCTACTATGGCCAACCAGGACGGCAGGGTCAATCC
 TGAGCCGCAAGGCAGCCTCAGTCAGAGCACCTGAAAGTTTTGCTCCTGAATCCAGCTGTGCATTTGC
 CCAAGTGGTGAAGGAATGCCGGGCAAGTGGTCAATTCGGGGGGTACCATGCAGCCGGTGTCTGACTCCGG
 CAGCAGCTGCTGGCCTGTGCCGGGTGGAAGCTGAGCGCGTGGTGGAGTTTTCTGTGGTACAGTATCC
 CTCCAGACAACATCCTGCCCTCGTCACTGCAGCGGATCTCCAACCAGCCGCTGGAATTCACGTTCCA
 GAAAAGAGAGTGCCTCAGATGATGGACGAGGTGGGTCGATTCTCTGTAACCTGTGCGGTGTGGTTCT
 GGAGGGTGGTCTGTTTCTTCCCTCCTACGAGTACCTGCGCCAGGTCCATGCCACTGGGAGAAGGGTG
 GCCTGCTGGGCCGCTGGCTGCCAGGAAGAAGATATCCAGGAACCTAAGAGCGCACACCCAGGTGGAGCA
 GGTGCTGCTGGCATAATCCAGGTGCATCCAGGCCTGTGGCCAGGAGAGAGGCCAGGTGACAGGGGCCCTG
 CTCTCTCTGTGGTTGGAGGAAAGATGAGTGAAGGGATCAACTTCTCTGACAACCTAGGCCGGTGTGTGG
 TGATGGTGGGCATGCCCTTCCCCAACATCAGGTCTGCAGAGCTGCAGGAGAAGATGGCCTACTTGGATCA
 AACCTCAGCCCCCGCCAGGCACCCCCAGGGAAGGCTCTGGTGGAGAACCCTGTGCATGAAGGCCGTCAA
 CCAGTCCATAGGCAGGGCCATCAGGCACCAAGAAGGATTTTCCAGCGTAGTGCTCCTGGACCAGCGATAT
 GCCCGGCCCTGTCTGGCCAAGCTGCCGGCCTGGATCCGAGCCCGTGGAGGTCAAAGCTACCTTTG
 GCCCGCCATTGCTGCTGTGCAGAAGTTTACCAGGAGAAGTCCGGCTCTTCTGATGGCAACCACACC
 ACTGCTGGCGCCGTGCCCTTCTTTGCTCTGCCGCTGGAGACAGTGTGTCGTGGCGTGGTCTGCC
 GGGATCCTGTTACAAAGGTGAAACCCAGGAGGAGAGTGTGGAGTCCAGAGTGTGCCAGGACCCAGGCAC
 AGCGGTTAGCTCCCGTAGGAGAAAATGGGGGAATCCTGAA

ACGCGTACGCGGCCGCTCGAGCAGAAACTCATCTCAGAAGAGGATCTGGCAGCAAATGATATCCTGGATT
 ACAAGGATGACGACGATAAGGTTTAA

Protein Sequence: >RC219308 protein sequence
 Red=Cloning site Green=Tags(s)

```

MANETQKVGAIHFPPFTFYSIQEDFMAELYRVLEAGKIGIFESPTGTGKSLSLICGALSWLRDFEQKKR
EEEEARLLETGTGPLHDEKDESLCLSSSCEGAAGTPRPAGEPAWVTQFVQKKEERDLVDRLKAEQARRKQR
EERLQQLQHRVQLKYAAKRLRQEEEEERENLLRLSREMLETGPEAERLEQLESGEEELVLAEYESDEEKV
ASRVDEDEDLDEEHITKIYYCSRTHSQLAQFVHEVKKSPFGKDVRLVSLGSRQNLVNEVDVKSLSGSVQL
INDRCVDMQRSRHEKKKGAEEKPKRRRQEKQAACPFYNHQMGLLRDEALAEVKDMEQLLALGKEARAC
PYYGSRLAIPAAQLVVLVYQMLLHAATRQAAGIRLQDQVVIIDEAHNLIDTITGMHSVEVSGSQLCQAH
S
QLLQYVERYGKRLKAKNLMYKQILYLLLEKFVAVLGGNIKQNPNTQSLSQTGTELKTINDFLFQSQIDNI
NLFKVQRYCEKSMISRKLFGFTERYGAVFSSREQPKLAGFQQFLQSLQPRTEALAAPADESQASTLRPA
SPLMHIQGFALAALTMANQDGRVILSRQGSLSQSTLKFLLLNPAVHFAQVVKECRAVVIAGGTMQPVSDFR
QQLLACAGVEAERVVEFSCGHVIPPNDILPLVICSGISNQPLEFTFKRELPMMDDEVGRILCNLCGVVP
GGVVCFPPSYEYLRQVHAHWEKGGLLGRLAARKKIFQEPKSAHQVEQVLLAYSRCIQACQGERGQVTGAL
LLSVVGGKMSSEGINFSDNLRGCVVMVGMPPFNIRSAELQEKMAYLDQTLSPRPGTPREGSGGEPVHEGRQ
PVHRQGHQAPEGFCQRSAPGPAICPAPCPGQAAGLDPSPCGGQSYLWPRHCCAEVSPGEVGLFLMGNHT
TAWRRALPLSCPLETFVVGVCVGDVTKVKKRRRWSPECCQDPGTGVSRRRKWGNPE
  
```

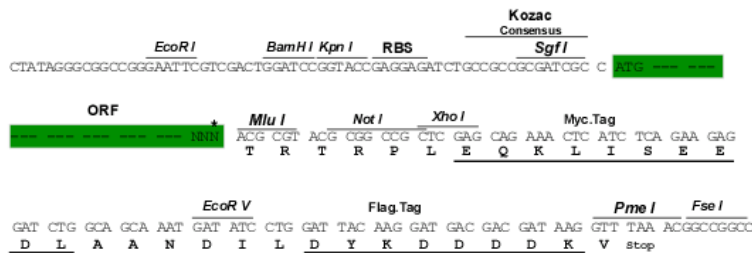
TRTRPLEQKLISEEDLAANDILDYKDDDDKV

Chromatograms: https://cdn.origene.com/chromatograms/mk6693_g10.zip

Restriction Sites: SgfI-MluI

Cloning Scheme:

Cloning sites used for ORF Shuttling:



* The last codon before the Stop codon of the ORF

ACCN: NM_030653

ORF Size: 1001 bp

OTI Disclaimer: Due to the inherent nature of this plasmid, standard methods to replicate additional amounts of DNA in E. coli are highly likely to result in mutations and/or rearrangements. Therefore, OriGene does not guarantee the capability to replicate this plasmid DNA. Additional amounts of DNA can be purchased from OriGene with batch-specific, full-sequence verification at a reduced cost. Please contact our customer care team at custsupport@origene.com or by calling 301.340.3188 option 3 for pricing and delivery.

The molecular sequence of this clone aligns with the gene accession number as a point of reference only. However, individual transcript sequences of the same gene can differ through naturally occurring variations (e.g. polymorphisms), each with its own valid existence. This clone is substantially in agreement with the reference, but a complete review of all prevailing variants is recommended prior to use. [More info](#)

OTI Annotation: This clone was engineered to express the complete ORF with an expression tag. Expression varies depending on the nature of the gene.

Components: The ORF clone is ion-exchange column purified and shipped in a 2D barcoded Matrix tube containing 10ug of transfection-ready, dried plasmid DNA (reconstitute with 100 ul of water).

Reconstitution Method:

1. Centrifuge at 5,000xg for 5min.
2. Carefully open the tube and add 100ul of sterile water to dissolve the DNA.
3. Close the tube and incubate for 10 minutes at room temperature.
4. Briefly vortex the tube and then do a quick spin (less than 5000xg) to concentrate the liquid at the bottom.
5. Store the suspended plasmid at -20°C. The DNA is stable for at least one year from date of shipping when stored at -20°C.

RefSeq: [NM_030653.1](#), [NM_030653.2](#), [NM_030653.3](#), [NP_085911.1](#)

RefSeq Size: 3947 bp

RefSeq ORF: 2721 bp

Locus ID: 1663

Cytogenetics: 12p11.21

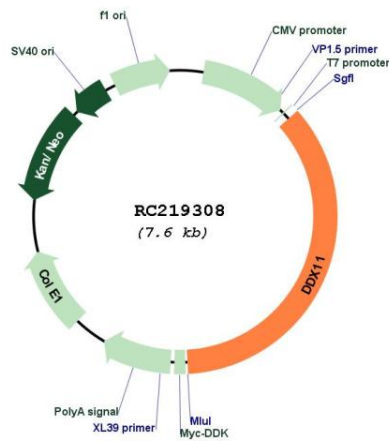
Domains: DEXDc2, HELICc2

Protein Families: Stem cell - Pluripotency

MW: 108.3 kDa

Gene Summary:

DEAD box proteins, characterized by the conserved motif Asp-Glu-Ala-Asp (DEAD), are putative RNA helicases. They are implicated in a number of cellular processes involving alteration of RNA secondary structure such as translation initiation, nuclear and mitochondrial splicing, and ribosome and spliceosome assembly. Based on their distribution patterns, some members of this family are believed to be involved in embryogenesis, spermatogenesis, and cellular growth and division. This gene encodes a DEAD box protein, which is an enzyme that possesses both ATPase and DNA helicase activities. This gene is a homolog of the yeast CHL1 gene, and may function to maintain chromosome transmission fidelity and genome stability. Alternative splicing results in multiple transcript variants encoding distinct isoforms. [provided by RefSeq, Jul 2008]

Product images:


Circular map for RC219308