

## Product datasheet for **RC219306**

### **TRAF5 (NM\_145759) Human Tagged ORF Clone**

#### **Product data:**

Product Type:	Expression Plasmids
Product Name:	TRAF5 (NM_145759) Human Tagged ORF Clone
Tag:	Myc-DDK
Symbol:	TRAF5
Synonyms:	MGC:39780; RNF84
Mammalian Cell Selection:	Neomycin
Vector:	pCMV6-Entry (PS100001)
E. coli Selection:	Kanamycin (25 ug/mL)



[View online »](#)

**ORF Nucleotide Sequence:**

>RC219306 ORF sequence  
 Red=Cloning site Blue=ORF Green=Tags(s)

TTTTGTAATACGACTCACTATAGGGCGGCCGGAATTCGTCGACTGGATCCGGTACCGAGGAGATCTGCC  
 GCC**GCGATCGCC**

ATGGCTTATT**CAGAAGAGCATAAAGGTATGCCCTGTGGTTTCATCCGCCAGAATTCGGCAACTCCATT**  
 CCTTGGACTTTGAGCCAGTATAGAGTACCAGTTTGTGGAGCGTTGGAAGAGCGCTACAAATGTGCCTT  
 CTGCCACTCGGTCTT**CACAACCCACCAGACAGGATGTGGCACCGCTTCTGCCAGCACTGCATCCTG**  
 TCCCTGAGAGAATTAAACACAGTCCAATCTGCCTGTAGATAAAGAGGTCATCAATCTCAGGAGGTTT  
 TAAAGACAATTGTTGAAAAGAGAAGTCTCACTTATATGTATATTGCAGCAATGCTCCTGGATGTAA  
 TGCCAAGTTATTCTGGGCCGGTACCAGGATCACCTTCAGCAGTGCTTATTTCAACCTGTGCAGTGTCT  
 AATGAGAAAGTCCCGGAGCCAGTCTACGAAAGACCTGAAAGAGCATTGAGTGCATCCTGTCAGTTTC  
 GAAAGGAAAAATGCCTTTATTGCAAAAAGGATGTGGTAGTCATCAATCTACAGAATCATGAGGAAAACTT  
 GTGTCCTGAATACCCAGTATTTTGTCCCAACAATTGTGCGAAGATTATTCTAAAACTGAGGTAGATGAA  
 CACCTGGCTGTATGTCTGAAGCTGAGCAAGACTGTCCTTTTAAGCACTATGGCTGTGCTGTAACGGATA  
 AACGGAGGAACCTGCAGCAACATGAGCATTAGCCTTACGGGAGCACATGCGCTTTGGTTTTAGAAAAGAA  
 TGTCCAATTAGAAGAACAGATTTCTGACTTACACAAGAGCCTAGAACAGAAAAGAAAGTAAAAATCCAGCAG  
 CTAGCAGAAAATAAAGAAACTTGAAAAGGAGTTCAAGCAGTTTGCACAGTTGTTTGGCAAAAATGGAA  
 GCTTCTCCCAACATCCAGGTTTTTGGCAGTCACATTGACAAGTCAGCTTGGCTAGAAGCTCAAGTGCA  
 TCAATTATTACAAATGGTTAACCAGCAACAAAAATAATTTGACCTGAGACCTTTGATGGAAGCAGTTGAT  
 ACAGTGAACAGAAAAATACCCTGCTAGAAAACAATGATCAAAGATTAGCCGTTTTAGAAGAGGAAAATA  
 ACAAAATGATACCCACATTAATATTCATAAAGCACAGCTGAGTAAAAATGAAGAGCGATTTAAACTGCT  
 GGAGGGTACTTGCTATAATGAAAAGCTCATTGGAAAGGTGACAGATTACAAGATGAAGAAGAGAGAGGCG  
 GTGGATGGGCACACAGTGTCCATCTTACGCCAGTCTTCTACACCAGCCGCTGTGGCTACCGGCTCTGTG  
 CTAGAGCATACCTGAATGGGGATGGGTACGGGAGGGGGTACACCTGTCCCTATACTTTGTGGTCATGCG  
 AGGAGAGTTTACTACTGTTGCAGTGGCCATTACGGCAGAGGGTACCCTGATGCTTCTGGACCAGAGT  
 GGCAAAAAGAACATTATGGAGACCTTCAAACCTGACCCCAATAGCAGCAGCTTTAAAAGACCTGATGGGG  
 AGATGAACATTGCATCTGGCTGTCCCGCTTTGTGGCTCATTCTGTTTTGGAGAATGCCAAGAACGCCTA  
 CATAAAGATGACTCTGTTCTTGAAGTGGCCGTGGACTTAACTGACCTGGAGGATCTC

**ACGCGTACGCGGCCGCTCGAGCAGAAACTCATCTCAGAAGAGGATCTGGCAGCAAATGATATCCTGGATT**  
**ACAAGGATGACGACGATAAGGTTTAA**

**Protein Sequence:**

>RC219306 protein sequence  
 Red=Cloning site Green=Tags(s)

MAYSEEHKMPCGFIRQNSGNSISLDFEPSIEYQFVERLEERYKCAFCHSVLHNPQTGCGHRFCQHCIL  
 SLRELNTVPICPVDEKVIKSEQEVFKDNCCKREVLNLYVYCSNAPGCNAKIVILGRYQDHLQQCLFQPVQCS  
 NEKREPVLRKDLKEHLSASCQFRKEKCLYCKKDVVVINLQNHEENLCPEYPVFCPNNCAKIILKTEVDE  
 HLAVCPEAEQDCPFKHYGCAVTDKRRNLQOHEHSALREHMRLVLEKNVQLEEQISDLHKSLEQKESKIQQ  
 LAETIKKLEKEFKQFAQLFGKNGSFLPNIQVFAHIDKSAWLEAQVHQLLQMVNQQNKFDRPLMEAVD  
 TVKQKITLLENNDQRLAVLEETNKHDTHINIHKALSKNEERFKLLEGTGKLYNGLIWKVTDYKMKKREA  
 VDGHTVSIQSFSYTSRCGYRLCARAYLNGDGSGRGSHLSLYFVVMRGEFDSLLQWPFQRVTLMLLDQS  
 GKKNIMETFKPDPNSSSFKRPDGMNIIASGCPRFVAHSVLENKNAIKDDTLFLKVAVDLTDLEDL

**TRTRPLEQKLISEEDLAANDILDYKDDDDKV**

**Chromatograms:**

[https://cdn.origene.com/chromatograms/mk6322\\_h12.zip](https://cdn.origene.com/chromatograms/mk6322_h12.zip)

**Restriction Sites:**

Sgfl-MluI

**Cloning Scheme:**


**ACCN:** NM\_145759

**ORF Size:** 1671 bp

**OTI Disclaimer:** The molecular sequence of this clone aligns with the gene accession number as a point of reference only. However, individual transcript sequences of the same gene can differ through naturally occurring variations (e.g. polymorphisms), each with its own valid existence. This clone is substantially in agreement with the reference, but a complete review of all prevailing variants is recommended prior to use. [More info](#)

**OTI Annotation:** This clone was engineered to express the complete ORF with an expression tag. Expression varies depending on the nature of the gene.

**Components:** The ORF clone is ion-exchange column purified and shipped in a 2D barcoded Matrix tube containing 10ug of transfection-ready, dried plasmid DNA (reconstitute with 100 ul of water).

- Reconstitution Method:**
1. Centrifuge at 5,000xg for 5min.
  2. Carefully open the tube and add 100ul of sterile water to dissolve the DNA.
  3. Close the tube and incubate for 10 minutes at room temperature.
  4. Briefly vortex the tube and then do a quick spin (less than 5000xg) to concentrate the liquid at the bottom.
  5. Store the suspended plasmid at -20°C. The DNA is stable for at least one year from date of shipping when stored at -20°C.

**RefSeq:** [NM\\_145759.2](#), [NP\\_665702.1](#)

**RefSeq Size:** 3988 bp

**RefSeq ORF:** 1674 bp

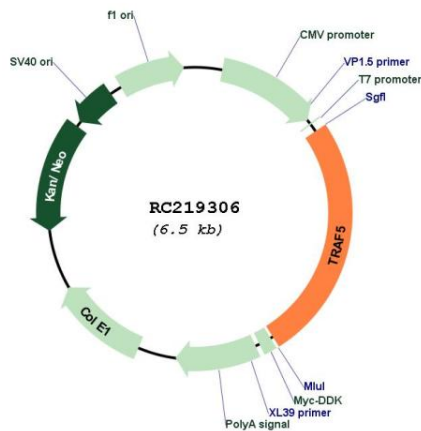
**Locus ID:** 7188

**UniProt ID:** [O00463](#)

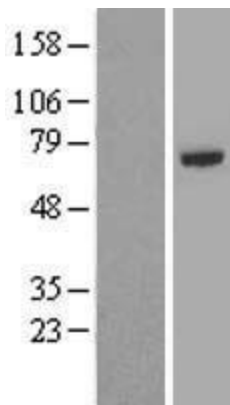
**Cytogenetics:** 1q32.3  
**Protein Families:** Druggable Genome  
**Protein Pathways:** Pathways in cancer, Small cell lung cancer  
**MW:** 64.4 kDa

**Gene Summary:** The scaffold protein encoded by this gene is a member of the tumor necrosis factor receptor-associated factor (TRAF) protein family and contains a meprin and TRAF homology (MATH) domain, a RING-type zinc finger, and two TRAF-type zinc fingers. TRAF proteins are associated with, and mediate signal transduction from members of the TNF receptor superfamily. This protein is one of the components of a multiple protein complex which binds to tumor necrosis factor (TNF) receptor cytoplasmic domains and mediates TNF-induced activation. Multiple transcript variants encoding different isoforms have been found for this gene. [provided by RefSeq, Jan 2016]

### Product images:



Circular map for RC219306



Western blot validation of overexpression lysate (Cat# [LY407875]) using anti-DDK antibody (Cat# [TA50011-100]). Left: Cell lysates from untransfected HEK293T cells; Right: Cell lysates from HEK293T cells transfected with RC219306 using transfection reagent MegaTran 2.0 (Cat# [TT210002]).