

Product datasheet for **RC219303**

LILRB5 (NM_001081443) Human Tagged ORF Clone

Product data:

Product Type:	Expression Plasmids
Product Name:	LILRB5 (NM_001081443) Human Tagged ORF Clone
Tag:	Myc-DDK
Symbol:	LILRB5
Synonyms:	CD85C; LIR-8; LIR8
Mammalian Cell Selection:	Neomycin
Vector:	pCMV6-Entry (PS100001)
E. coli Selection:	Kanamycin (25 ug/mL)



[View online »](#)

ORF Nucleotide Sequence:

>RC219303 representing NM_001081443
 Red=Cloning site Blue=ORF Green=Tags(s)

TTTTGTAATACGACTCACTATAGGGCGGCCGGAATTCGTCGACTGGATCCGGTACCGAGGAGATCTGCC
 GCC**CGCATCGCC**

ATGACCCTCACCTCTCAGTCTGATTTGCTCGGGCTGAGTGTGGGCCCCAGGACCTGCGTGCAGGCAG
 GCACCCTCCCAAAACCCACCCTCTGGGCTGAGCCAGCCTCTGTAGCTCGGGGAAGCCCGTGACCCT
 CTGGTGTGAGGGGCCCTGGAGACTGAGGAGTACCGTCTGGATAAGGAGGGACTCCCATGGGCCCGAAG
 AGACAGAACCCACTGGAGCCTGGAGCCAAGGCCAAGTTCCACATTCACCGTGTATGACAGTGCAG
 GGCGATACCGTCTACTATGAGACCCCTGCAGGCTGGTGCAGAGCCAGTGACCCCTGGAGCTGGTGGC
 GACAGGCGTGTCTAGGAAGCCCTCCCTCTGATCCCGCAGGGCTCTGTCTGGCCCGGGAGGCAGCCTG
 ACCCTGCAGTGTCTGATGTCGGCTATGACATATTCGTTCTGTACAAGGAGGGGAACATGACCTCG
 TCCAGGGCTCTGGCCAGCAGCCCAGGCTGGGCTCTCCAGGCCAACTTACCCTGGGCCCTGTGAGCCG
 CTCCACGGGGCCAGTACAGATGCTACGGTGCACACAACCTCTCCCTAGGTGGTGGCCCGCAGCGAC
 CCCTGGACATCCTGATCGCAGGACTGATCCCTGACATACCCGCCCTCTCGGTGCAGCCGGCCCAAGG
 TGGCTCAGGAGAGAACGTGACCCTGCTGTGTCAGTCATGGCATCAGATAGACACTTTCTTTTTGACAA
 GGAGGGGGCAGCCATCCCCCGTGTGTCTAAAGTCAAAGTACCAGTCTTATAGACACCAGGCTGAATTC
 TCCATGAGTCTGTGACCTCAGCCAGGGTGAACCTACCGATGCTACAGCGCAATCAGGTCCTACCCTT
 ACCTGTGTCCAGCCCTAGTTACCCCCAGGAGCTCGTGGTCTCAGGACCTCTGGGGATCCCAGCCTCTC
 ACCTACAGGCTCCACCCACACCTGCAGGCCCTGAGGACCAGCCCTCACCCACGGGGTGGATCCC
 CAGAGTGGTCTGGGAAGGCACCTGGGGTGTGACTGGGTCTCAGTGGCCTTCGTCCTGCTGCTGTTCC
 TCCTCCTTCTCCTCCTCCGACATCGGCATCAGAGCAACACAGGACATCGGCCATTTCTACCGTCC
 TGCAGGGCTGCGGGCCAGAGCCAAGGACCAGGGCTGCAGAAGAGGGCCAGCCAGTTGCTGACATC
 CAGGAGGAAATTCTCAATGCTGCGTGAAGGACACACAGCCAAGGACGGGGTGGAGATGGATGCTCGGG
 CTGCTGCATCTGAAGCCCCCAGGATGTGACCTACGCCAGCTACACAGCTTGACCCTCAGACGGGAGGC
 AACTGAGCCTCCTCCATCCAGGAAAGGAACCTCCAGCTGAACCAGCATCTACGCCCCCTGGCCATC
 CAC

**ACGGTACGGCGCGCTCGAGCAGAACTCATCTCAGAAGAGGATCTGGCAGCAATGATATCCTGGATT
 ACAAGGATGACGACGATAAGGTTTAA**

Protein Sequence:

>RC219303 representing NM_001081443
 Red=Cloning site Green=Tags(s)

MTLTLVLIICLGLSVGPRTCVQAGTLPKPTLWAEPASVIARGKPVTLWCQPLETEEYRLDKEGLPWARK
 RQNPLEPGAKAKFHIPSTVYDSAGRYRCYYETPAGWSEPSDPLELVATGVSRKPSLLIPQGSVVARGGSL
 TLQCRSDVGYDIFVLYKEGEHDLVQSGQPQAGLSQANFTLGPVSRSHGGQYRCYGAHNLSPRWSAPSD
 PLDILIAGLIPDIPALSVQPGPKVASGENVTLLCQSWHQIDTFLLTKEGAHPPLCLKSKYQSYRHQAEF
 SMSPVTSAQGGTYRCYSAIRSYPYLLSSPSYPQELVVSGPSGDPSSLPTGSTPTPAGPEDQPLTPTGLDP
 QSLGRHLGVVTGVSVAFLVLLFLLLRHRHQSKHRTSAHFYRPAAGPEPKDQGLQKRASPVADI
 QEEILNAAVKDTQPKDGVEMDARAAAASEAPQDVTYAQLHSLTLRREATEPPPSQEREPPAEPSTIYAPLAI
 H

TRTRPLEQKLISEEDLAANDILDYKDDDDKV

Chromatograms:

https://cdn.origene.com/chromatograms/ja1147_c05.zip

Restriction Sites:

Sgfl-Mlul

Cloning Scheme:


ACCN: NM_001081443

ORF Size: 1473 bp

OTI Disclaimer: The molecular sequence of this clone aligns with the gene accession number as a point of reference only. However, individual transcript sequences of the same gene can differ through naturally occurring variations (e.g. polymorphisms), each with its own valid existence. This clone is substantially in agreement with the reference, but a complete review of all prevailing variants is recommended prior to use. [More info](#)

OTI Annotation: This clone was engineered to express the complete ORF with an expression tag. Expression varies depending on the nature of the gene.

Components: The ORF clone is ion-exchange column purified and shipped in a 2D barcoded Matrix tube containing 10ug of transfection-ready, dried plasmid DNA (reconstitute with 100 ul of water).

Reconstitution Method:

1. Centrifuge at 5,000xg for 5min.
2. Carefully open the tube and add 100ul of sterile water to dissolve the DNA.
3. Close the tube and incubate for 10 minutes at room temperature.
4. Briefly vortex the tube and then do a quick spin (less than 5000xg) to concentrate the liquid at the bottom.
5. Store the suspended plasmid at -20°C. The DNA is stable for at least one year from date of shipping when stored at -20°C.

RefSeq: [NM_001081443.1](#), [NP_001074912.1](#)

RefSeq Size: 1982 bp

RefSeq ORF: 1476 bp

Locus ID: 10990

UniProt ID: [O75023](#)

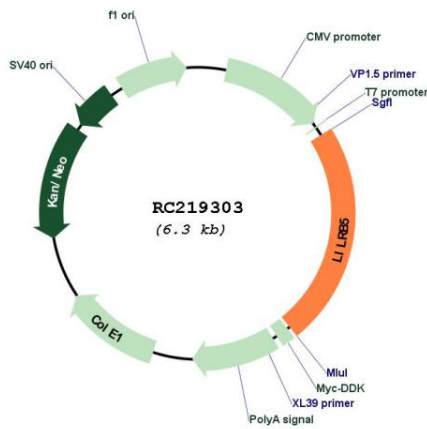
Cytogenetics: 19q13.42

Protein Families: Transmembrane

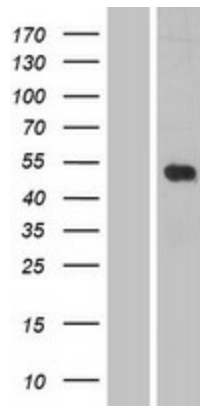
MW: 52.8 kDa

Gene Summary: This gene is a member of the leukocyte immunoglobulin-like receptor (LIR) family, which is found in a gene cluster at chromosomal region 19q13.4. The encoded protein belongs to the subfamily B class of LIR receptors which contain two or four extracellular immunoglobulin domains, a transmembrane domain, and two to four cytoplasmic immunoreceptor tyrosine-based inhibitory motifs (ITIMs). Several other LIR subfamily B receptors are expressed on immune cells where they bind to MHC class I molecules on antigen-presenting cells and inhibit stimulation of an immune response. Multiple transcript variants encoding different isoforms have been found for this gene. [provided by RefSeq, Jul 2008]

Product images:



Circular map for RC219303



Western blot validation of overexpression lysate (Cat# [LY421153]) using anti-DDK antibody (Cat# [TA50011-100]). Left: Cell lysates from untransfected HEK293T cells; Right: Cell lysates from HEK293T cells transfected with RC219303 using transfection reagent MegaTran 2.0 (Cat# [TT210002]).