

Product datasheet for **RC219284**

LGR6 (NM_001017403) Human Tagged ORF Clone

Product data:

| | |
|---------------------------|--|
| Product Type: | Expression Plasmids |
| Product Name: | LGR6 (NM_001017403) Human Tagged ORF Clone |
| Tag: | Myc-DDK |
| Symbol: | LGR6 |
| Synonyms: | GPCR; VTS20631 |
| Mammalian Cell Selection: | Neomycin |
| Vector: | pCMV6-Entry (PS100001) |
| E. coli Selection: | Kanamycin (25 ug/mL) |



[View online »](#)

ORF Nucleotide Sequence:

>RC219284 representing NM_001017403
 Red=Cloning site Blue=ORF Green=Tags(s)

TTTTGTAATACGACTCACTATAGGGCGGCCGGGAATTCGTCGACTGGATCCGGTACCGAGGAGATCTGCC
 GCC**CGGATCGCC**

ATGCCAGCCCGCCGGGCTCCGGGCGCTATGGCTTTGCGCCGCGCTGTGCGCTTCCCGAGGGCCGGCG
 GCGCCCCCAGCCCGGCCCGGGGCCACCGCCTGCCCGGCCCTGCCACTGCCAGGAGGACGGCATCAT
 GCTGTCTGCCGACTGCTCTGAGCTCGGGCTGTCCGCCGTTCCGGGGACCTGGACCCCTGACGGCTTAC
 CTGGACCTCAGCATGAACAACCTCACAGAGCTTACGCCTGGCCTTCCACCACCTGCGCTTCTGGAGG
 AGCTGCGTCTCTGGAACCATCTCTCACACATCCCAGGACAAGCATTCTGTGCTCTACAGCCTGAA
 AATCCTGATGCTGCAGAACAATCAGCTGGGAGGAATCCCCGAGAGGCGCTGTGGAGCTGCCGAGCCTG
 CAGTCGCTGCGCTAGATGCCAACCTCATCTCCCTGGTCCCGGAGAGGAGCTTTGAGGGGCTGTCTCC
 TCCGCCACCTCTGGCTGGACGACAATGCACTCACGGAGATCCCTGTGAGGGCCCTCAACAACCTCCCTGC
 CCTGCAGGCCATGACCCTGGCCCTCAACCGCATCAGCCACATCCCGACTACGCGTTCAGAAATCTCACC
 AGCCTTGTGGTGTGCATTTGCATAACAACCGCATCCAGCATCTGGGGACCCACAGCTTCGAGGGGCTGC
 ACAATCTGGAGACTAGACCTGAATTATAACAAGCTGCAGGAGTTCCCTGTGGCCATCCGACCCCTGGG
 CAGACTGCAGAACTGGGGTTCATAACAACAACATCAAGGCCATCCCAGAAAAGGCCTTCATGGGGAAC
 CCTCTGTACAGACGATACACTTTATGATAACCCAATCCAGTTTGTGGGAAGATCGGCATTCCAGTACC
 TGCTAAACTCCACACTATCTCTGAATGGTGCCATGGACATCCAGGAGTTCCAGATCTCAAAGGCAC
 CACCAGCCTGGAGATCCTGACCTGACCCGCGCAGGCATCCGGCTGTCCCATCGGGATGTGCCAACAG
 TGACCCAGGCTCCGAGTCTGAACTGTCTCACAATCAAATGAGGAGCTGCCAGCCTGCACAGGTGTC
 AGAAATGGAGGAAATCGGCCTCAACAACAACCGCATCTGGGAAATGGAGCTGACACCTCAGCCAGTGC
 GAGCTCCCTGCAAGCCCTGGATCTTAGCTGGAACGCCATCCGGTCCATCCACCCGAGGCCCTTCCACC
 CTGCACTCCCTGGTCAAGCTGGACCTGACAGACAACAGCTGACCACACTGCCCTGGCTGGACTTGGGG
 GCTTGTGCATCTGAAGCTCAAAGGGAACCTTGTCTCTCCAGGCCTTCTCAAAGGACAGTTTCCAAAA
 ACTGAGGATCCTGGAGGTGCCTATGCCTACCAGTGTGTCCCTATGGGATGTGTGCCAGCTTCTCAAG
 GCCTCTGGGCAGTGGGAGGCTGAAGACCTTACCTTGATGATGAGGAGTCTTCAAAAAGGCCCTGGGCC
 TCCTTGCCAGACAAGCAGAGAACCCTATGACCAGGACCTGGATGAGCTCCAGCTGGAGATGGAGGACTC
 AAAGCCACACCCAGTGTCCAGTGTAGCCCTACTCCAGGCCCTTCAAGCCCTGTGAGTACCTCTTTGAA
 AGCTGGGGCATCCGCCTGGCCGTGTGGCCATCGTGTGCTCTCCGTGCTGCAATGGACTGGTGTGCTGC
 TGACCGTGTTCGCTGGCGGGCCTGTCCCTGCCCGGTCAGTTCGAGTTTGTGGTAGGTGCGATTGCAGGCGC
 CAACACCTTGACTGGCATTTCCTGTGGCCTTCTAGCCTCAGTCGATGCCCTGACCTTTGGTCAGTTCTCT
 GAGTACGGAGCCCGCTGGGAGACGGGGCTAGGCTGCCGGGCCACTGGCTTCTGGCAGTACTTGGGTCCG
 AGGCATCGGTGCTGTGCTCACTCTGGCCGAGTGCAGTGCAGCGTCTCCGTCTCCTGTGTCGGGCCCTA
 TGGGAAGTCCCCCTCCCTGGGCAGCGTTCGAGCAGGGGTCTAGGCTGCCTGGCACTGGCAGGGCTGGCC
 GCCGCGTGCCCTGGCCTCAGTGGGAGAATACGGGGCTCCCACTCTGCCTGCCCTACGCGCCACCTG
 AGGTTCAGCCAGCAGCCCTGGCTTACCGTGGCCCTGGTGTGATGAACTCTTCTGTTTCTGGTGTGCT
 GGCCGGTGCCTACATCAAAGTACTGTGACCTGCCCGGGGCGACTTTGAGGCCGTGGGACTGCGCC
 ATGGTGAGGCACGTGGCCTGGCTCATCTTCGACAGCGGGCTCCTACTGTCCCGTGGCCTTCTCAGCT
 TTGCCTCCATGTGGCCTTCTCCCTGTACGCCGAGGCGTCAAGTCTGTCCTGCTGGTGGTGTGCTGCC
 CCTGCCTGCCTGCCTCAACCCACTGCTGTACCTGCTCTTCAACCCCACTTCCGGGATGACCTTCCGGCG
 CTTCCGGCCCCGCGAGGGGACTCAGGGCCCTAGCCTATGCTGCGGCCGGGAGCTGGAGAAGAGCTCCT
 GTGATTACCCAGGCCCTGGTAGCCTTCTGTGATGTGGATCTCATTCTGGAAGCTTCTGAAGCTGGGCG
 GCCCCTGGGCTGGAGACCTATGGCTTCCCTCAGTGACCCTCATCTCCTGTCAGCAGCCAGGGGCCCCC
 AGGCTGGAGGGCAGCCATTGTGTAGAGCCAGAGGGGAACCACTTTGGGAACCCCAACCTCCATGGATG
 GAGAAGTGTGCTGAGGGCAGAGGGATCTACGCCAGCAGGTGGAGGCTTGTGAGGGGTGGCGGCTTCA
 GCCCTCTGGCTTGGCCTTTGCTTACACCTG

AG**CGGACCG**ACGCGTACGCGGCCGCTCGAGCAGAACTCATCTCAGAAGAGGATCTGGCAGCAAATGATATCC
 TGGATTACAAGGATGACGACGATAAGGTTTAA

Protein Sequence: >RC219284 representing NM_001017403
 Red=Cloning site Green=Tags(s)

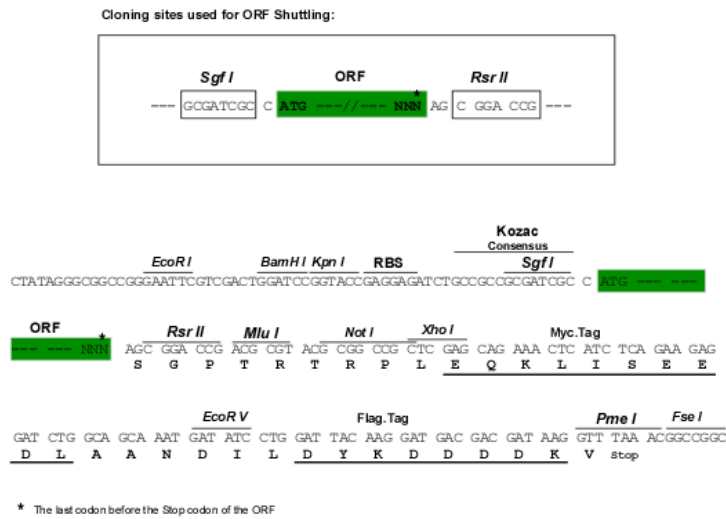
MPSPPGLRALWLCAALCASRRAGGAPQPGPGPTACPAPCHCQEDGIMLSADCESELGLSAVPGDLPLTAY
 LDLSMNLTQLPGLFHHLRFLEELRLSGNHLSHIPGQAFSGLYSLKILMLQNNQLGGIPAEALWELPSL
 QSLRLDANLISLVPERSFEGLSLRLWLDNLTTEIPVRALNNLPAQAMTLALNRISHIPDYAFQNL
 SLVVLHLHNNRIQHLGTHSFEGLNLETLDLNLYNKLQEFPPVAIRTLGRLQELGFHNNNIKAIPKAFMGN
 PLLQTIHFYDNP IQFVGRSAFQYLPKHLTSLNGAMDIQEFPD LKGTTSLEILTLTRAGIRLLPSGMCQQ
 LPRLRVLELSHNQIEELPSLHRCQKLEEIGLQHNRIWEIGADTFSQLSSLQALDLSWNAIRSIHPEAFST
 LHSLVKLDLTDNQLTTLPLAGLGGMLHLKLGNLALSQAFSKDSFPKLRILEVPYAYQCPCPYGMCASF
 ASGQWEAEDLHLDDEESSKRPLGLLARQAENHYDQDLDELQLEMEDSKPHPSVQCSPTPGPFKPCYLF
 SWGIRLAVWAI VLLSVLCNGLVLLTVFAGGPVPLPPVKFVVGAIAGANTLTGISCGLLASVDALTFGQFS
 EYGARWETGLGCRATGFLAVLGSEASVLLTLAAVQCSVSVSCVRA YGKSPSLGSRVAGVLGCLALAGLA
 AALPLASVGEYGASPLCLPYAPPEGQPAALGFTVALVMMNSFCFLV VAGAYIKLYCDLPRGDFEAVWDC
 MVRHVAVLIFADGLLYCPVAFLSFASMLGLFPVTPEAVKSVLLVVLPLPACLNPLLYLLFNPFRD LRR
 LRPRAGDSGLAYAAAGELEKSSCDSTQALVAFSDVDLILEASEAGRPPGLETYGFPSVTLISCCQPGAP
 RLEGSHCVEPEGNHFGNPQPSMDGELLLRAEGSTPAGGGLSGGGGFQPSGLAFASHV

SGPTRRRL**EQKLISEEDLAANDILDYKDDDDK**V

Chromatograms: https://cdn.origene.com/chromatograms/mk6223_d03.zip

Restriction Sites: SgfI-RsrII

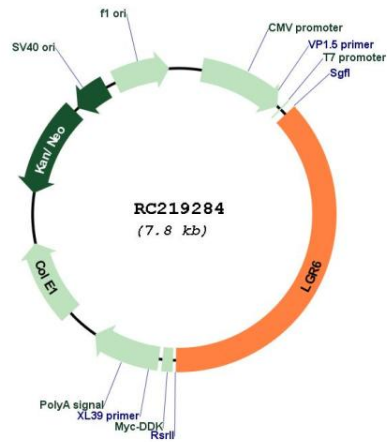
Cloning Scheme:



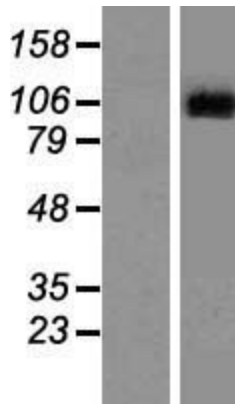
ACCN: NM_001017403
 ORF Size: 2901 bp

| | |
|-------------------------------|---|
| OTI Disclaimer: | The molecular sequence of this clone aligns with the gene accession number as a point of reference only. However, individual transcript sequences of the same gene can differ through naturally occurring variations (e.g. polymorphisms), each with its own valid existence. This clone is substantially in agreement with the reference, but a complete review of all prevailing variants is recommended prior to use. More info |
| OTI Annotation: | This clone was engineered to express the complete ORF with an expression tag. Expression varies depending on the nature of the gene. |
| Components: | The ORF clone is ion-exchange column purified and shipped in a 2D barcoded Matrix tube containing 10ug of transfection-ready, dried plasmid DNA (reconstitute with 100 ul of water). |
| Reconstitution Method: | <ol style="list-style-type: none">1. Centrifuge at 5,000xg for 5min.2. Carefully open the tube and add 100ul of sterile water to dissolve the DNA.3. Close the tube and incubate for 10 minutes at room temperature.4. Briefly vortex the tube and then do a quick spin (less than 5000xg) to concentrate the liquid at the bottom.5. Store the suspended plasmid at -20°C. The DNA is stable for at least one year from date of shipping when stored at -20°C. |
| RefSeq: | NM_001017403.1 , NP_001017403.1 |
| RefSeq Size: | 3458 bp |
| RefSeq ORF: | 2904 bp |
| Locus ID: | 59352 |
| UniProt ID: | Q9HBX8 |
| Cytogenetics: | 1q32.1 |
| Protein Families: | Druggable Genome, Transmembrane |
| MW: | 104.1 kDa |
| Gene Summary: | This gene encodes a member of the leucine-rich repeat-containing subgroup of the G protein-coupled 7-transmembrane protein superfamily. The encoded protein is a glycoprotein hormone receptor with a large N-terminal extracellular domain that contains leucine-rich repeats important for the formation of a horseshoe-shaped interaction motif for ligand binding. Alternative splicing of this gene results in multiple transcript variants. [provided by RefSeq, Jul 2008] |

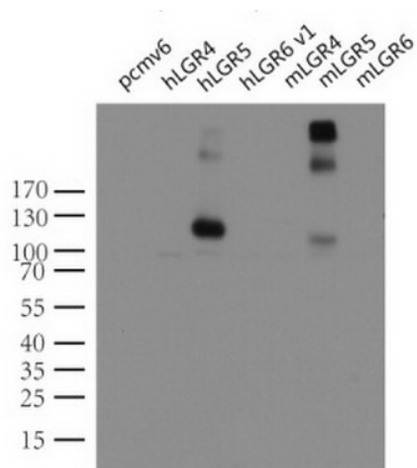
Product images:



Circular map for RC219284



Western blot validation of overexpression lysate (Cat# [LY422779]) using anti-DDK antibody (Cat# [TA50011-100]). Left: Cell lysates from untransfected HEK293T cells; Right: Cell lysates from HEK293T cells transfected with RC219284 using transfection reagent MegaTran 2.0 (Cat# [TT210002]).



Western blot analysis of extracts (10ug) from 7 different transiently transfected HEK293T cell lysates by using anti-LGR5 monoclonal antibody (Cat# [UM800104]). Lanes: control vector pCMV6-Entry (Cat# [PS100001]); human LGR4 (Cat# [RC221345]), LGR5 (Cat# [RC212825]) and LGR6 (Cat# RC219284), and mouse LGR4 (Cat# [MR219497]), LGR5 (Cat#[MR219702]) and LGR6 (Cat# [MR224646]).