

Product datasheet for **RC219280**

MMP27 (NM_022122) Human Tagged ORF Clone

Product data:

Product Type:	Expression Plasmids
Product Name:	MMP27 (NM_022122) Human Tagged ORF Clone
Tag:	Myc-DDK
Symbol:	MMP27
Synonyms:	MMP-27
Mammalian Cell Selection:	Neomycin
Vector:	pCMV6-Entry (PS100001)
E. coli Selection:	Kanamycin (25 ug/mL)



[View online »](#)

ORF Nucleotide Sequence:

>RC219280 representing NM_022122
 Red=Cloning site Blue=ORF Green=Tags(s)

TTTTGTAATACGACTCACTATAGGGCGGCCGGAATTCGTCGACTGGATCCGGTACCGAGGAGATCTGCC
 GCC**CGCATCGCC**

ATGAAGCGCCTTCTGCTTCTGTTTTGTCTTTATAACATTTTCTCTGCATTTCCCTTAGTCCGGATGA
 CGGAAAATGAAGAAAATATGCAACTGGCTCAGGCATATCTCAACCAAGTTCTACTCTTTGAAATAGAAGG
 GAATCATCTTGTTCAAAGCAAGAATAGGAGTCTCATAGATGACAAAATTCGGGAAATGCAAGCATTTTTT
 GGATTGACAGTACTGGAAAACGGACTCAAACACCCCTTGAGATCATGAAGACACCCAGGTGTGGGGTGC
 CTGATGTGGGCCAGTATGGCTACACCCCTCCCTGGGTGGAGAAAATACAACCTCACCTACAGAATAATAAA
 CTATACTCCGGATATGGCAGGAGCTGCTGTGGATGAGGCTATCCAAGAAGTTTAGAAGTGTGGAGCAAA
 GTCACCTCCACTAAAATTCACCAAGATTTCAAAGGGGATTGCAGACATCATGATTGCCTTTAGGACTCGAG
 TCCATGGTGGTGTCTCGCTATTTTATGGTCCCTTGGGAGTGTGGCCATGCCTTTCTCTGGTCC
 GGGTCTGGGTGGTACACTCATTGATGAGGATGAAAACGGGATGGACCAAGGATGGAGCAGGATTCAACTTG
 TTTCTTGTGGCTGCTCATGAATTTGGTCATGCACTGGGGCTCTCACTCCAATGATCAAACAGCCTTGA
 TGTCCCAAATATGTCTCCCTGGATCCAGAAAATACCACTTTCTCAGGATGATATCAATGGAATCCA
 GTCCATCTATGGAGGTCTGCCTAAGGAACCTGCTAAGCCAAAGGAACCCACTATACCCCATGCCTGTGAC
 CCTGACTTGACTTTTACGCTATCACAACTTCCCGAGAGAAGTAATGTTCTTTAAAGGCAGGCACCTAT
 GGAGGATCTATTATGATATCACGGATGTTGAGTTTGAATTAATTGCTTCATTCTGGCCATCTCTGCCAGC
 TGATCTGCAAGCTGCATACGAGAACCCAGAGATAAGATTCTGGTTTTAAAGATGAAAACCTTCTGGATG
 ATCAGAGGATATGCTGTCTTCCAGATTATCCCAATCCATCCATACATTAGGTTTTCCAGGACGTGTGA
 AGAAAATAGATGACGCCGTCTGTGATAAGACCACAAGAAAACCTACTTCTTGTGGGCATTTGGTGTG
 GAGGTTTGTGATGAAATGACCCAAACCATGGACAAAAGGGTTCCCGCAGAGAGTGGTAAAACACTTTCCTGGA
 ATCAGTATCCGTGTTGATGCTGCTTCCAGTACAAGGATTCTTCTTTTTCAGCCGTGGATCAAAGCAAT
 TTGAATACGACATTAAGACAAAGAATATTACCGAATCATGAGAACTAATACTTGGTTTTCAATGCAAAGA
 ACCAAAGAACTCCTCATTGGTTTTGATATCAACAAGGAAAAAGCACATTAGGAGGCATAAAGATATTG
 TATCATAAGAGTTAAGCTTGTATTTTTTGGTATTGTTCAATTTGCTGAAAAACACTTCTATTTATCAA

ACGCGTACGCGGCCGCTCGAGCAGAAACTCATCTCAGAAGAGGATCTGGCAGCAAATGATATCCTGGATT
 ACAAGGATGACGACGATAAGGTTTAA

Protein Sequence:

>RC219280 representing NM_022122
 Red=Cloning site Green=Tags(s)

MKRLLLFLFFITFSSAFPLVRMTENEENMQLAQAYLNQFYSLIEGNHLVQSKNRSIIDDKIREMQAFF
 GLTVTGLKDSNTLEIMKTPRCGVPDVQGYGYTLPGWRKYNLYRIINYTPDMARAAVDEAIQEGLEVWSK
 VTPLKFTKISKGIADIMIAFRTRVHGRCPRYFDGPLGVLGHAFPPGPGGLGGDTHFDEDENWTKDGAGFNL
 FLVAAHEFGHALGLSHSNDQTALMFPNYVSLDPRKYPLSQDDINGIQSIYGGLPKEPAKPKPEPTIPHACD
 PDLTFDAITTFRREVMFFKGRHLWRIYYDITDVEFELIASFWPSLPADLQAAAYENPRDKILVFKDENFWM
 IRGYAVLPDYPKSIHTLGFPRVKKIDAAVCDKTRKTYFFVGIWCWRFDEMTQTMDKGFPQRVVKHFP
 ISIRVDAAFQYKGGFFSRGSKQFEYDIKTKNITRIMRTNTWFQCKEPKNSFFGFDINKEKAHSGGIKIL
 YHKSLSLFI FGI VHLKNTSIYQ

TRTRPLEQKLISEEDLAANDILDYKDDDDKV

Chromatograms:

https://cdn.origene.com/chromatograms/mk8022_b10.zip

Restriction Sites:

SgfI-MluI

Cloning Scheme:


ACCN: NM_022122

ORF Size: 1539 bp

OTI Disclaimer: The molecular sequence of this clone aligns with the gene accession number as a point of reference only. However, individual transcript sequences of the same gene can differ through naturally occurring variations (e.g. polymorphisms), each with its own valid existence. This clone is substantially in agreement with the reference, but a complete review of all prevailing variants is recommended prior to use. [More info](#)

OTI Annotation: This clone was engineered to express the complete ORF with an expression tag. Expression varies depending on the nature of the gene.

Components: The ORF clone is ion-exchange column purified and shipped in a 2D barcoded Matrix tube containing 10ug of transfection-ready, dried plasmid DNA (reconstitute with 100 ul of water).

Reconstitution Method:

1. Centrifuge at 5,000xg for 5min.
2. Carefully open the tube and add 100ul of sterile water to dissolve the DNA.
3. Close the tube and incubate for 10 minutes at room temperature.
4. Briefly vortex the tube and then do a quick spin (less than 5000xg) to concentrate the liquid at the bottom.
5. Store the suspended plasmid at -20°C. The DNA is stable for at least one year from date of shipping when stored at -20°C.

RefSeq: [NM_022122.3](#)

RefSeq Size: 1647 bp

RefSeq ORF: 1542 bp

Locus ID: 64066

UniProt ID: [Q9H306](#)

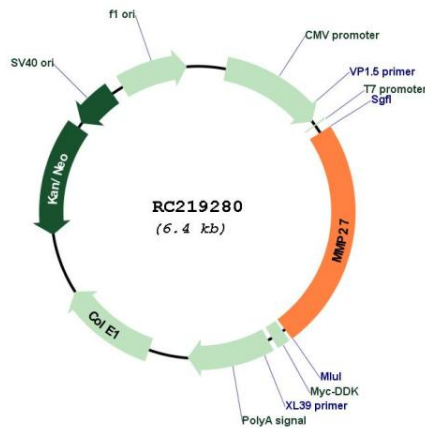
Cytogenetics: 11q22.2

Protein Families: Druggable Genome

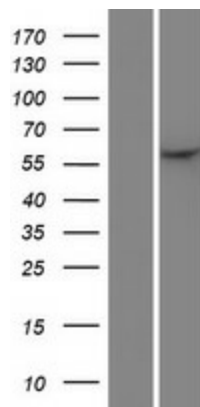
MW: 58.8 kDa

Gene Summary: Proteins of the matrix metalloproteinase (MMP) family are involved in the breakdown of extracellular matrix in normal physiological processes, such as embryonic development, reproduction, and tissue remodeling, as well as in disease processes, such as arthritis and metastasis. Most MMP's are secreted as inactive proproteins which are activated when cleaved by extracellular proteinases. [provided by RefSeq, Jul 2008]

Product images:



Circular map for RC219280



Western blot validation of overexpression lysate (Cat# [LY411760]) using anti-DDK antibody (Cat# [TA50011-100]). Left: Cell lysates from untransfected HEK293T cells; Right: Cell lysates from HEK293T cells transfected with RC219280 using transfection reagent MegaTran 2.0 (Cat# [TT210002]).