

## Product datasheet for **RC219278**

### **KREMEN1 (NM\_001039570) Human Tagged ORF Clone**

#### **Product data:**

Product Type:	Expression Plasmids
Product Name:	KREMEN1 (NM_001039570) Human Tagged ORF Clone
Tag:	Myc-DDK
Symbol:	KREMEN1
Synonyms:	ECTD13; KREMEN; KRM1
Mammalian Cell Selection:	Neomycin
Vector:	pCMV6-Entry (PS100001)
E. coli Selection:	Kanamycin (25 ug/mL)



[View online »](#)

**ORF Nucleotide Sequence:**

>RC219278 representing NM\_001039570  
 Red=Cloning site Blue=ORF Green=Tags(s)

TTTTGTAATACGACTCACTATAGGGCGGCCGGGAATTCGTCGACTGGATCCGGTACCGAGGAGATCTGCC  
 GCC**CGGATCGCC**

ATGGCGCCGCCAGCCGCCCGCTCGCCCTGCTCTCCGCCGCGGCGCTCACGCTGGCGGCCCGGCCCGCCGCGC  
 CTAGCCCCGCGCTCGGCCCGGACCCGAGTGTTCACAGCCAATGGTGGGATTATAGGGGAACACAGAA  
 CTGGACAGCACTACAAGGCGGGAAGCCATGTCTGTTTTGGAACGAGACTTCCAGCATCCATAACAACACT  
 CTGAAATACCCCAACGGGGAGGGGGCCTGGGTGAGCACAATATTGCAGAAATCCAGATGGAGACGTGA  
 GCCCTGGTGCTATGTGGCAGAGCAGGAGTGGTGTCTACTGGAAGTACTGTGAGATACCTGCTTGCCA  
 GATGCCTGAAACCTTGCTGCTACAAGGATCATGAAACCCACCTCCTCTAACTGGCACCAGTAAACG  
 TCCAACAACTCACCATACAAATTGCATCAGTTTTTGTGGAGTCAGAGTTCAAGTTTGTGGGATGG  
 AGTCAGGCTATGCTTCTGTGGAAACAATCCTGATTACTGGAAGTACGGGGAGGCAGCCAGTACCGA  
 ATGCAACAGCGTCTGCTTCGGGGATCACACCAACCCTGTGGTGGCGATGCCAGGATCATCTCTTTGAT  
 ACTCTCGTGGGCGCTCGGGTGGAACTACTCAGCCATGTCTTCTGTGGTCTATTCCTGACTTCCCCG  
 ACACCTATGCCACGGGGAGGGTCTGCTACTGGACCATCCGGGTTCCGGGGCCTCCCACATCCACTTCAG  
 CTTCCCCATTTGACATCAGGGACTCGGCGGACATGGTGGAGCTTCTGGATGGTACACCCACCGTGT  
 CTAGCCCGCTTCCACGGGAGGAGCCGCCACCTCTGCTTCAACGTCTCTCTGGACTTCGTCATCTTGT  
 ATTTCTTCTGTATCGCATCAATCAGGCCCAGGGATTTGCTGTTTTATACCAAGCCGTCAAGGAAGAACT  
 GCCACAGGAGAGGCCCGCTGTCAACCAGACGGTGGCCGAGGTGATCACGGAGCAGCCAACTCAGTGT  
 AGCGTGCCTGCTCCTCAAAGTCTCTATGTCATCACCACAGCCAGCCACCCACCTCAGACTGTCC  
 CAGGTAGCAATTCCTGGGCGCCACCCATGGGGCTGGAAGCCACAGAGTTGAAGGATGGACAGTCTATGG  
 TCTGGCAACTCTCTCATCCTCACAGTCACAGCCATTGTAGCAAAGATACTTCTGCACGTACACATTCAAA  
 TCCCATCGTGTCTGCTCAGGGGACCTTAGGGATTGTCATCAACCAGGACTTCGGGGAAATCTGGA  
 GCATTTTTTACAAGCCTTCCACTTCAATTTCCATCTTTAAGAAGAACTCAAGGGTCAGAGTCAACAAGA  
 TGACCGCAATCCCCTTGTGAGTGAC

**ACGGTACGCGGCCGCTCGAGCAGAACTCATCTCAGAAGAGGATCTGGCAGCAAATGATATCCTGGATT  
 ACAAGGATGACGACGATAAGGTTTAA**

**Protein Sequence:**

>RC219278 representing NM\_001039570  
 Red=Cloning site Green=Tags(s)

MAPPAARLALLSAAALTLAARPAPSPGLGPGPECFTANGADYRGTQNWALQGGKPCFLFNNETFQHPYNT  
 LKYPNGEGGLGEHNYCRNPDGDVSPWCYVAEHEDGVYWKYCEIPACQMPGNLGCYKDHGNPPPLTGTSKT  
 SNKLTIQTCISFCRSQRFKFRAGMESGYACFCGNNPDYWKYGEAASTECNSVCFGDHTQPCGGDGRILFD  
 TLVGCAGGNYSAMSSVVYSPDFPDYATGRVCYWTIRVPGASHIHFSPFLFDIRDSADMVELLDGYTHRV  
 LARFHGRSRPPLSFNVSLDFVILYFFSDRINQAQGFVLYQAVKEELPQERPAVNQTVAEVITEQANLSV  
 SAARSSKVLVYITTSPPHPPQTVPGNSWAPPMGAGSHRVEGWTVYGLATLLILTVTAIVAKILLHVTFK  
 SHRVPASGDLRDCHQPGTSGEIWSIFYKPTSSISIFKKKLKGQSQQDDRNPLVSD

**TRTRPLEQKLISEEDLAANDILDYKDDDDKV**

**Chromatograms:**

[https://cdn.origene.com/chromatograms/mg3998\\_e05.zip](https://cdn.origene.com/chromatograms/mg3998_e05.zip)

**Restriction Sites:**

Sgfl-Mlul

**Cloning Scheme:**


**ACCN:** NM\_001039570

**ORF Size:** 1425 bp

**OTI Disclaimer:** The molecular sequence of this clone aligns with the gene accession number as a point of reference only. However, individual transcript sequences of the same gene can differ through naturally occurring variations (e.g. polymorphisms), each with its own valid existence. This clone is substantially in agreement with the reference, but a complete review of all prevailing variants is recommended prior to use. [More info](#)

**OTI Annotation:** This clone was engineered to express the complete ORF with an expression tag. Expression varies depending on the nature of the gene.

**Components:** The ORF clone is ion-exchange column purified and shipped in a 2D barcoded Matrix tube containing 10ug of transfection-ready, dried plasmid DNA (reconstitute with 100 ul of water).

**Reconstitution Method:**

1. Centrifuge at 5,000xg for 5min.
2. Carefully open the tube and add 100ul of sterile water to dissolve the DNA.
3. Close the tube and incubate for 10 minutes at room temperature.
4. Briefly vortex the tube and then do a quick spin (less than 5000xg) to concentrate the liquid at the bottom.
5. Store the suspended plasmid at -20°C. The DNA is stable for at least one year from date of shipping when stored at -20°C.

**RefSeq:** [NM\\_001039570.1](#), [NP\\_001034659.1](#)

**RefSeq Size:** 6166 bp

**RefSeq ORF:** 1377 bp

**Locus ID:** 83999

**UniProt ID:** [Q96MU8](#)

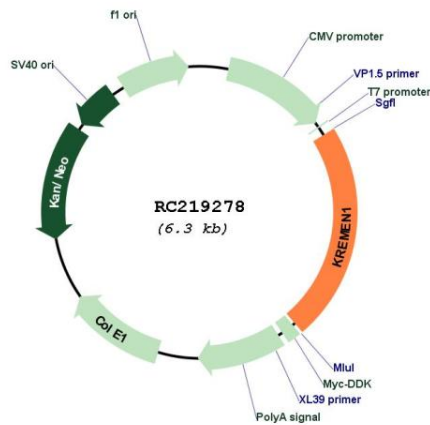
**Cytogenetics:** 22q12.1

**Protein Families:** Druggable Genome, Transmembrane

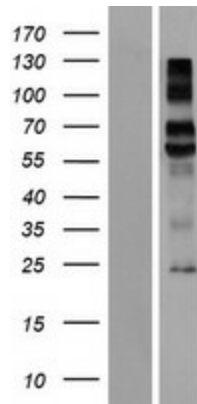
**MW:** 51.9 kDa

**Gene Summary:** This gene encodes a high-affinity dickkopf homolog 1 (DKK1) transmembrane receptor that functionally cooperates with DKK1 to block wingless (WNT)/beta-catenin signaling. The encoded protein is a component of a membrane complex that modulates canonical WNT signaling through lipoprotein receptor-related protein 6 (LRP6). It contains extracellular kringle, WSC, and CUB domains. Alternatively spliced transcript variants encoding distinct isoforms have been observed for this gene. [provided by RefSeq, Jul 2008]

**Product images:**



Circular map for RC219278



Western blot validation of overexpression lysate (Cat# [LY422073]) using anti-DDK antibody (Cat# [TA50011-100]). Left: Cell lysates from untransfected HEK293T cells; Right: Cell lysates from HEK293T cells transfected with RC219278 using transfection reagent MegaTran 2.0 (Cat# [TT210002]).