

## Product datasheet for RC219275

### Delta Opioid Receptor (OPRD1) (NM\_000911) Human Tagged ORF Clone

#### Product data:

Product Type:	Expression Plasmids
Product Name:	Delta Opioid Receptor (OPRD1) (NM_000911) Human Tagged ORF Clone
Tag:	Myc-DDK
Symbol:	Delta Opioid Receptor
Synonyms:	DOP; DOR; DOR1; OPRD
Mammalian Cell Selection:	Neomycin
Vector:	pCMV6-Entry (PS100001)
E. coli Selection:	Kanamycin (25 ug/mL)
ORF Nucleotide Sequence:	>RC219275 representing NM_000911 Red=Cloning site Blue=ORF Green=Tags(s)

TTTTGTAATACGACTCACTATAGGGCGGCCGGAATTCGTCGACTGGATCCGGTACCGAGGAGATCTGCC  
GCC**CGATCGCC**

ATGGAACCGGCCCTCCGCCGGCGCCGAGCTGCAGCCCCGCTCTTCGCCAACGCCTCGGACGCCTACC  
CTAGCGCTGCCAGCGCTGGCGCAATGCGTCGGGGCCCGCAGGCGCGGAGCGCTCGTCCCTCGC  
CCTGGCAATCGCCATCACCGCGCTACTCGGCCGTGTGCGCCGTGGGGTGTGGGCAACGTGCTTGC  
ATGTTCCGCATCGTCCGGTACACTAAGATGAAGACGGCCACCAACATCTACATCTCAACCTGGCCTTAG  
CCGATGCGCTGGCCACCAGCAGCTGCCTTCCAGAGTGCCAAGTACCTGATGGAGACGTGGCCCTTCGG  
CGAGCTGCTCTGCAAGGCTGTGCTCTCCATCGACTACTACAATATGTTACCCAGCATCTTACGCTCACC  
ATGATGAGTGTTGACCGCTACATCGCTGTCTGCCACCCTGTCAAGGCCCTGGACTTCCGCACGCCTGCCA  
AGGCCAAGCTGATCAACATCTGTATCTGGTCTGGCCTCAGGCGTTGGCGTGCCCATCATGGTCATGGC  
TGTGACCCGTCCCGGGACGGGGCAGTGGTGTGCATGCTCCAGTTCGCCAGCCAGCTGGTACTGGGAC  
ACGGTGACCAAGATCTGCGTGTTCCTCTCGCCTTCGTTGGTGGCCATCCTCATCATCACCGTGTGCTATG  
GCCTCATGCTGCTGCGCTGCGCAGTGTGCGCTGCTGTGGGCTCCAAGGAGAAGGACCGCAGCCTGCG  
GCGCATCACGCGCATGGTGTGGTGGTGTGGGCGCCTTCGTGGTGTGTGGGCGCCATCCACATCTTC  
GTCATCGTCTGGACGCTGGTGGACATCGACCGGCGGACCCGCTGGTGGTGGCTGCGCTGCACCTGTGCA  
TCGCGCTGGGCTACGCCAATAGCAGCCTCAACCCGCTGCTACGCTTTCCTCGACGAGAAGTCAAGCG  
CTGCTTCCGCCAGCTCTGCCAAGCCCTGCGGGCCCGCCAGACCCAGCAGCTTACGCGCGCCCGCGAA  
GCCACGGCCCGGAGCGTGTACCGCTGCACCCGTCGGATGGTCCCGCGGTGGCGCTGCCGCC

**ACGCGT**ACGCGGCCGCTCGAGCAGAACTCATCTCAGAAGAGGATCTGGCAGCAAATGATATCCTGGATT  
ACAAGGATGACGACGATAAGGTTAA



[View online »](#)

**Protein Sequence:** >RC219275 representing NM\_000911  
 Red=Cloning site Green=Tags(s)

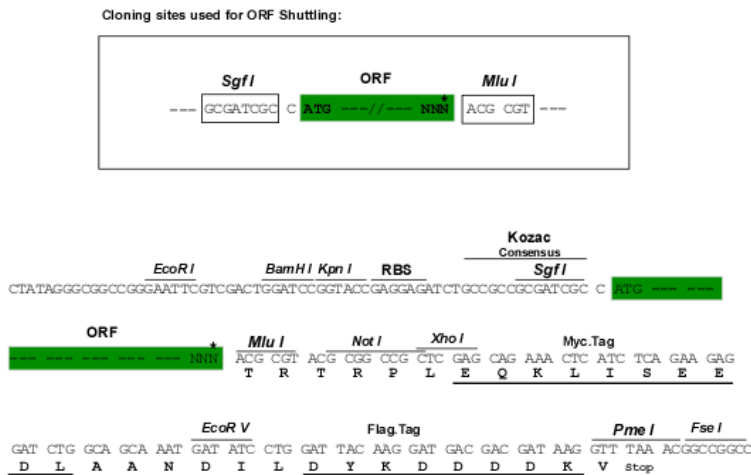
MEPAPSAGAE LQPPLFANASDAYPSACPSAGANASGPPGARSASSLALAIITALYSAVCAVGLLGNLV  
 MFGIVRYTKMKTATNIYIFNLALADALATSTLPFQSAKYL METWPF GELLCKAVLSIDYNNMFTSIFTLT  
 MMSVDRYIAVCHPVKALDFRTPAKAKLINICIWV LASGVGVPIMVMAVTRPRDGA VVCM LQFPSPSWYWD  
 TVTKICVFLFAFVVPIL IITVCYGLMLLR LRSVRLLSGSKEKDRSLRRITRMVLVVVGFVVCWAPIHIF  
 VIWVTLVDIDRRDPLVVAALHLCIALGYANSSLN PVLVYAF LDENFKRCFRQLCRKPCGRPD PSSF SRARE  
 ATARERTACTPSDGPGGGAAA

TRTRPLEQKLISEEDLAANDILDYKDDDDKV

**Chromatograms:** [https://cdn.origene.com/chromatograms/mg2413\\_f02.zip](https://cdn.origene.com/chromatograms/mg2413_f02.zip)

**Restriction Sites:** SgfI-MluI

**Cloning Scheme:**



\* The last codon before the Stop codon of the ORF

**ACCN:** NM\_000911

**ORF Size:** 1116 bp

**OTI Disclaimer:** The molecular sequence of this clone aligns with the gene accession number as a point of reference only. However, individual transcript sequences of the same gene can differ through naturally occurring variations (e.g. polymorphisms), each with its own valid existence. This clone is substantially in agreement with the reference, but a complete review of all prevailing variants is recommended prior to use. [More info](#)

**OTI Annotation:** This clone was engineered to express the complete ORF with an expression tag. Expression varies depending on the nature of the gene.

**Components:** The ORF clone is ion-exchange column purified and shipped in a 2D barcoded Matrix tube containing 10ug of transfection-ready, dried plasmid DNA (reconstitute with 100 ul of water).

**Reconstitution Method:**

1. Centrifuge at 5,000xg for 5min.
2. Carefully open the tube and add 100ul of sterile water to dissolve the DNA.
3. Close the tube and incubate for 10 minutes at room temperature.
4. Briefly vortex the tube and then do a quick spin (less than 5000xg) to concentrate the liquid at the bottom.
5. Store the suspended plasmid at -20°C. The DNA is stable for at least one year from date of shipping when stored at -20°C.

**Note:** Plasmids are not sterile. For experiments where strict sterility is required, filtration with 0.22um filter is required.

**RefSeq:** [NM\\_000911.4](#)

**RefSeq Size:** 1774 bp

**RefSeq ORF:** 1119 bp

**Locus ID:** 4985

**UniProt ID:** [P41143](#)

**Cytogenetics:** 1p35.3

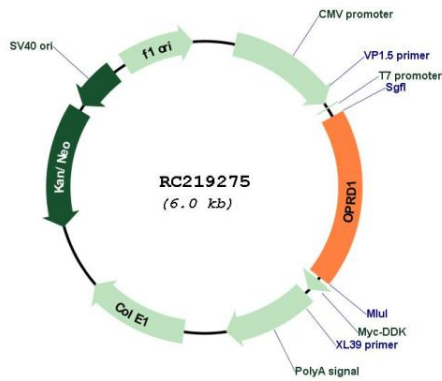
**Protein Families:** Druggable Genome, Transmembrane

**Protein Pathways:** Neuroactive ligand-receptor interaction

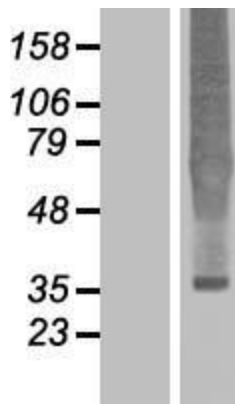
**MW:** 40.2 kDa

**Gene Summary:** G-protein coupled receptor that functions as receptor for endogenous enkephalins and for a subset of other opioids. Ligand binding causes a conformation change that triggers signaling via guanine nucleotide-binding proteins (G proteins) and modulates the activity of downstream effectors, such as adenylate cyclase. Signaling leads to the inhibition of adenylate cyclase activity. Inhibits neurotransmitter release by reducing calcium ion currents and increasing potassium ion conductance. Plays a role in the perception of pain and in opiate-mediated analgesia. Plays a role in developing analgesic tolerance to morphine. [UniProtKB/Swiss-Prot Function]

Product images:



Circular map for RC219275



Western blot validation of overexpression lysate (Cat# [LY400330]) using anti-DDK antibody (Cat# [TA50011-100]). Left: Cell lysates from untransfected HEK293T cells; Right: Cell lysates from HEK293T cells transfected with RC219275 using transfection reagent MegaTran 2.0 (Cat# [TT210002]).