

Product datasheet for **RC219274**

PHF16 (JADE3) (NM_014735) Human Tagged ORF Clone

Product data:

Product Type:	Expression Plasmids
Product Name:	PHF16 (JADE3) (NM_014735) Human Tagged ORF Clone
Tag:	Myc-DDK
Symbol:	PHF16
Synonyms:	JADE-3; PHF16
Mammalian Cell Selection:	Neomycin
Vector:	pCMV6-Entry (PS100001)
E. coli Selection:	Kanamycin (25 ug/mL)



[View online »](#)

ORF Nucleotide
Sequence:

>RC219274 ORF sequence
Red=Cloning site Blue=ORF Green=Tags(s)

TTTTGTAATACGACTCACTATAGGGCGGCCGGGAATTCGTGACTGGATCCGGTACCGAGGAGATCTGCC
GCC**CGCATCGCC**

ATGAAACGCCATAGGCCTGTCAGCAGCAGTGACAGTTCAGACGAAAGTCCTTCCACTTCCTTTACTTCTG
GCTCAATGTATAGGATCAAGTCAAAAATCCAAATGAACACAAGAAACCTGCTGAGGTATTCCGGAAGGA
CCTCATCAGTGCCATGAACTTCCAGATTCTACCACATTAATCCTGATAGCTATTACCTCTTTGCTGAT
ACATGGAAGGAAGAATGGGAAAAGGGAGTCCAGGTACCAGCCAGTCCAGACACCGTTCCACAGCCTTCTC
TCAGGATTATAGCTGAGAAGGTAAGGACGTTCTGTTTATCCGACCCCGGAAGTATATTCAGTCTCCAG
CCCAGACACCACAGACCTGGCTACATCAACATCATGGAGTTGGCAGCATCTGTTTGCCGCTATGACCTA
GATGACATGGACATCTTCTGGCTTCAGGAACTCAATGAAGACCTTGCAGAAATGGGTTGTGGCCAGTTG
ATGAGAATCTTATGGAAGACAGTAGAAGTCTGGAACGCCATTGCCATGAAAAATGAACCATGCTAT
TGAGACAGAGGAAGGGCTAGGCATAGAGTATGATGAAGATGTGATCTGTGATGTGTGCCGCTCCAGAC
AGTGAAGAAGGAATGATATGGTGTCTGTGATAAGTGTAACTGTGTGCATCAGGCCTGCTATGGCA
TCCTCAAGGTCCCAGAAGGCAGCTGGCTGTGTCGCTCCTGTGTCCTGGCATTATCCGCAATGTGTGTT
ATGTCCAAAGAAAGGTGGAGCCCTGAAGACCACCAAGACAGGGACTAAATGGGCTCATGTGAGCTGTGCC
CTGTGGATCCCAGAGGTGAGCATTGCTTGTCTGAGAGGATGGAACCGATCACGAAGATCTCCACATCC
CACCCAGTCGGTGGCCCTTAGTCTGCAACTTGTGCAAGTTGAAGACGGGGGCTTGTATTACAGTGTCTAT
AAAAAGCTGCATCACTGCCTTCCAGTCACTGTGCTTGTGAGCAGGCCTAGAGATGAAGACCATCCTA
AGTGAGGGAGACGAAGTGAAGTTCAAGTCAATATGCCTCAAGCATAGCCAAAACAGGCAGAACTGGAG
AAGCTGAGTACCCCAACACAGGGCTAAAGAGCAGAGCCAGGCCAAAAGTGAGAAAACAGCCTGCGGGC
ACAGAAGCTTCGGGAGCTGGAGGAGGAGTTCTATTCTTGGTACGAGTGAAGATGTGGCCGACAGACTG
GGTATGCCACGCTAGCTGTGGACTTTATCTATAACTACTGAAAAGTGAAGCGGAAAAGTAACTTCAATA
AGCCATTATTTCTCCAAAGGAGGATGAAGAAAATGGGCTGGTGCAGCCAAAAGAGGAAAGCATTACAC
TCGAATGAGAATGTTTATGCATCTACGCCAGGACCTGGAGAGGGTCCGAAATCTGTGCTATATGATAAGC
AGACGAGAGAAGCTGAAGCTGTACACAACAAAATACAGGAACAGATCTTCGTTTGAAGTCCAGCTTC
TTAACCAAGAAATGATGCAGGGCTTCTTTGACAAATGCACTTGAAAAGTCACTGTTTTACCCACCACC
AAGAATTACCTTGAAGTTAAAAATGCCAAATCAACCCAGAAGACCACAGAAACAGCTCCACAGAAACC
GATCAGCAGCCCCACTCTCCTGACAGCAGCTCATCTGTTACAGTATAAGGAACATGCAGGTGCCTCAGG
AGTCACTAGAAAATGAGAACAAAATCGTATCCGAGATACCCACTAGAGAGCAAGAATAACCGTTTGTGGC
CAGTCTCAGCCATTCTAGGAGTGAAGCAAGGAGTCCAGTCTGCTTGGAGAACCCCGTCTCGGAGTGC
TATCATGGGCAGTCACTGGGAAAGCCTCTGGTCTTTCAGGCTGCCCTCCATGGACAGTCTTCCATTGGGA
ATGGGAAAAGTCAAGCCTAACTCCAAGTTTGCCAAATCCAATGGCCTGGAGGGCAGCTGGTCTGGGAATGT
CACCCAAAAGACAGCTCGAGTGAGATGTTCTGTGACCAGGAGCCTGTGTTTACGCCCCACTTGGTCACT
CAGGGCAGCTTTAGAAAATCCACTGTAGAACACTTTAGTAGGTCCTTTAAAGAGACCACCAATAGGTGGG
TGAAGAACACAGAGGACCTCCAGTGTATGTGAAGCCAACCAAGAATATGAGCCCCAAGGAGCAGTTCTG
GGTAGACAGGTTCTCAGGCGGCTGCAGGGAGAGCTCCATATCAGGAAAATGATGGCTATTGCCAGAT
TTGGAGCTGAGTGATTCAGAGGCAGAAAAGTGTGGGAATAAAGAAAAGTCAAGGTAAGGAAAGATAGCT
CAGACAGGAAAATCCTCCCATGACTCTAGACGGGATTGCCATGGTAAAAGCAAGACACATCCCCTTTC
CCACAGTTCATGCAAAGG

ACGCGTACGCGGCCGCTCGAGCAGAAACTCATCTCAGAAGAGGATCTGGCAGCAAATGATATCCTGGATT
ACAAGGATGACGACGATAAGGTTTAA

Protein Sequence: >RC219274 protein sequence
Red=Cloning site Green=Tags(s)

MKRHRPVSSSDSSDESPSTSFTSGSMYRIKSKIPNEHKKPAEVFRKDLISAMKLPDSSHINPDSYLFAD
TWKEWEKGVQVPASPDTVPQPSLRIIAEKVKDVL FIRPRKYIHCSSPDTTEPGYINIMELAASVCRYDL
DDMDIFWLQELNEDLAEMGCGPVDENLMEKTVEVLERHCHENMNHAIETEEGLGIEYDEDVICDVCRSPD
SEEGNDMVFCDKCNVCVHQACYGILKVPEGSWLCRSCVLGIYPQCVLCPKKGALKTTKTGTKWAHVSCA
LWIPEVSIACPERMEPITKISHIPPSRWALVCNLCKLKTGACIQCSIKSCITAFHVTCAFEHGLEMKTIL
DEGDEVKFKSYCLKHSQNRQKLGEAEYPHRAKEQSQAQSEKTSLRAQKLRELEEEFYSLVRVEDVAAEL
GMPTLAVDFIYNYWKLKRKSNFNKPLFPPKEDEENGLVQPKEESIHTMRMFMHLRQDLERVRNLCYMIS
RREKLLSHNKIQEQIFGLQVQLLNQEI DAGLPLTNALENSLFYPPPRITLKLKMPKSTPEDHRNSSTET
DQQPHSPDSSSSVHSIRNMQVPQESLEMRKSYPRYPLESKNNRLLASLSHRSEAKESSPAWRTPSSEC
YHGQSLGKPLVLQAALHGQSSIGNGKSQPNKFAKSNGLGEGSWGNVTQKDSSEMFCQEPVFSPLVVS
QGSFRKSTVEHFSRSFKETTNRWVKNTEDLQCYVKPTKNMSPKEQFWGRQVLRRSAGRAPYQENDGYCPD
LELSDSEAESDGNKEKVRVRKDSRDREPPHDSRRDCHGKSKTHPLSHSSMQR

TRTRPLEQKLISEEDLAANDILDYKDDDDKV

Chromatograms: https://cdn.origene.com/chromatograms/mk6444_d09.zip

Restriction Sites: SgfI-MluI

Reconstitution Method:

1. Centrifuge at 5,000xg for 5min.
2. Carefully open the tube and add 100ul of sterile water to dissolve the DNA.
3. Close the tube and incubate for 10 minutes at room temperature.
4. Briefly vortex the tube and then do a quick spin (less than 5000xg) to concentrate the liquid at the bottom.
5. Store the suspended plasmid at -20°C. The DNA is stable for at least one year from date of shipping when stored at -20°C.

RefSeq: [NM_014735.5](#)

RefSeq Size: 4935 bp

RefSeq ORF: 2472 bp

Locus ID: 9767

UniProt ID: [Q92613](#)

Cytogenetics: Xp11.3

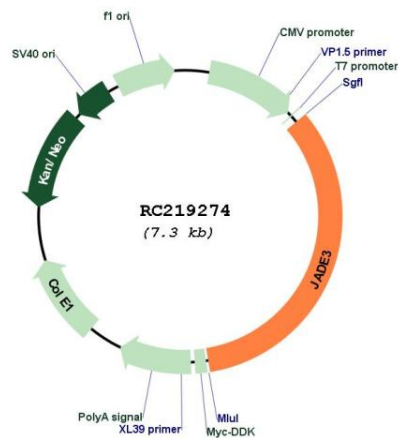
Domains: PHD

Protein Families: Druggable Genome, Transcription Factors

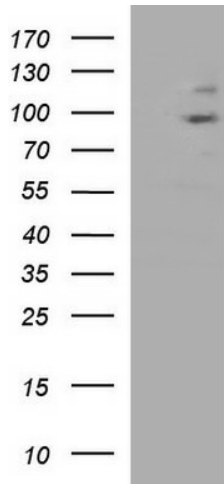
MW: 93.8 kDa

Gene Summary: This gene encodes a member of a family of large proteins containing PHD (plant homeo domain)-type zinc fingers. The encoded protein may be associated in a nuclear complex that functions in histone H4 acetylation. Alternative splicing results in multiple transcript variants encoding the same protein. [provided by RefSeq, Aug 2013]

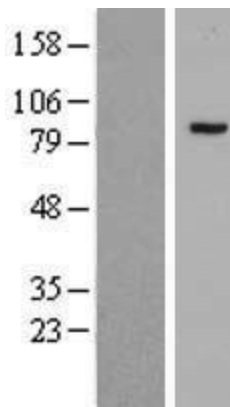
Product images:



Circular map for RC219274



HEK293T cells were transfected with the pCMV6-ENTRY control (Cat# [PS100001], Left lane) or pCMV6-ENTRY PHF16 (Cat# RC219274, Right lane) cDNA for 48 hrs and lysed. Equivalent amounts of cell lysates (5 ug per lane) were separated by SDS-PAGE and immunoblotted with anti-PHF16 (Cat# [TA590529]). Positive lysates [LY415071] (100ug) and [LC415071] (20ug) can be purchased separately from OriGene.



Western blot validation of overexpression lysate (Cat# [LY415071]) using anti-DDK antibody (Cat# [TA50011-100]). Left: Cell lysates from untransfected HEK293T cells; Right: Cell lysates from HEK293T cells transfected with RC219274 using transfection reagent MegaTran 2.0 (Cat# [TT210002]).