

Product datasheet for **RC219271**

TOM1L2 (NM_001082968) Human Tagged ORF Clone

Product data:

Product Type:	Expression Plasmids
Product Name:	TOM1L2 (NM_001082968) Human Tagged ORF Clone
Tag:	Myc-DDK
Symbol:	TOM1L2
Mammalian Cell Selection:	Neomycin
Vector:	pCMV6-Entry (PS100001)
E. coli Selection:	Kanamycin (25 ug/mL)



[View online »](#)

ORF Nucleotide Sequence:

>RC219271 representing NM_001082968
 Red=Cloning site Blue=ORF Green=Tags(s)

TTTTGTAATACGACTCACTATAGGGCGGCCGGAATTCGTCGACTGGATCCGGTACCGAGGAGATCTGCC
 GCC**CGCATCGCC**

ATGGAGTTCCTCTGGGAAACCGTTCCAGCACACCAGTGGGGCAGTGCCTCGAAAAGCCAACAGATGGT
 CCCTGCAAAGTGAGGATTGGACGTTGAATATGGAGATCTGTGACATCATCAATGAGACGGAGGAAGGGCC
 AAAGGATGCCATTCGAGCCCTGAAGAAGCGGCTCAACGGGAACCGAACTACAGAGAGGTGATGCTGGCA
 TTAACAGTGTGGAGACATGTGTGAAGAACTGTGGCCACCGCTTCCACATCCTTGTGGCCAAACCGAGATT
 TCATCGACAGTGTCTGGTCAAATTATATCTCCAAGAACAACCTCCCACCATTTGACAGGACAAAGT
 GCTTGCTCTGATCCAGGCATGGGCTGATGCCTTTCGAAGCAGTCTGATCTACCGGCGTTGTGCACATA
 TATGAGGAGCTGAAGAGGAAAGGGTTGAATTTCCCATGGCAGACTTGGACGCTCTGTCTCCCATACACA
 CACCACAGCGGAGTGTCCCTGAAGTGGATCCAGCTGCGACCATGCCAGGTCCCAATCACAGCAGAGGAC
 AAGTGTGGTTCCCTATTCTCGCCGCTCTGCTCCCTACTCCGCACCGCAGGCCCCAGCTGTAGTGTG
 ACTGGCCCCATCACAGCCAATTCAGAACAGATTGCCAGGCTGCGGAGTGAAGTGGACGTCGTTCCGAGGAA
 ACACAAAAGTCATGTCTGAGATGTTAACAGAAATGGTCCCTGGACAGGAGGATTCATCTGATCTGGAGTT
 GCTGCAGGAGCTCAACAGGACCTGTGGGCCATGCAGCAGCGCATCGTGGAGCTCATCTCCCGCTGTCC
 AATGAGGAGGTCACCGAGGAGCTGCTGCATGTGAACGATGACCTCAACAACGTTCTTCTCGATACGAGA
 GGTTTCAAACGATACAGTCTGGCCGATCCGTTCAAATGCCAGTAATGGAGTACTGAATGAAGTAACCGA
 AGACAACCTAATAGACCTGGGGCCAGGGTCTCCAGCCGTTGGTGGAGCCCAATGGTGGGGAACACAGCGCC
 CCATCTTCCCTCTCTCCAGCTTGCAGGCTTAGACTTGGGACAGAGAGCGTCAGTGGCACCCCTCAGTT
 CACTCCAGCAATGTAATCCCGTGACGGCTTTGACATGTTTCCCAGACGAGAGGAACTCCTTGGCTGA
 GCAGCGCAAGACGGTAACCTATGAGGATCCTCAGGCTGTCGGAGGACTTGCTTCTGCACTAGACAATCGA
 AAACAGAGTTCAGAAGGGATCCCGTTGCGCAGCCATCTGTCATGGACGACATTGAGGTGTGGCTCAGGA
 CCGACCTGAAGGGTGTGATCTGGAGGAGGGTGTCAAGTGAAGAGTTTGATAAATTCCTGAAGAAA
 AGCCAAAGCTGTGAAATGGTTCCCGACCTCCCTCGCCCCCATGGAGGCTCTGCCCCAGCCTCAAAC
 CCTTCTGGCCGGAAGAAGCCAGAGCGGTGAGAGGATGCCCTTTCGCCCTG

ACGCGTACGCGGCCGCTCGAGCAGAACTCATCTCAGAAGAGGATCTGGCAGCAAATGATATCTGGATT
 ACAAGGATGACGACGATAAGGTTTAA

Protein Sequence:

>RC219271 representing NM_001082968
 Red=Cloning site Green=Tags(s)

MEFLLGNPFSTPVGQCLEKATDGSLSQEDWTLNMEICDIINETEEGPKDAIRALKKRLNGNRNYREVMLA
 LTVLETVCVKNCGHRFHILVANRDFIDSVLVKIIISPKNNPPTIVQDKVLALIQAWADAFRSPDLTGVVHI
 YEELKRKGVFPMADLDALSPIHTPQRSVPEVDPAAATMPRSQSQQRTSAGSYSSPPPPAPYSAPQAPALSV
 TGPITANSEQIARLRSELDVVRGNTKVMSEMLTEMVPGQEDSSDLELLQELNRTCRAQQRIVELISRV
 NEEVTEELLHVNDLNNVFLRYERFERYSRGSVQNASNGVLNEVTEDNLDLGPSPAVVSPMVGNTAP
 PSSLSSQLAGLDLGTESVSGTSSLQCCNPRDGFDMFAQTRGNSLAEQRKTVTYEDPQAVVGLASALDNR
 KQSSEGIQVAPQSVMDIEVWLRDLDKGDLEEGVTSEEDFKLEERAKAAEMVDPDLPSPMEAPAPASN
 PSGRKKPERSEDALFAL

TRTRPLEQKLISEEDLAANDILDYKDDDDKV

Chromatograms:

https://cdn.origene.com/chromatograms/mk8022_b12.zip

Restriction Sites:

Sgfl-MluI

Cloning Scheme:


ACCN: NM_001082968

ORF Size: 1521 bp

OTI Disclaimer: The molecular sequence of this clone aligns with the gene accession number as a point of reference only. However, individual transcript sequences of the same gene can differ through naturally occurring variations (e.g. polymorphisms), each with its own valid existence. This clone is substantially in agreement with the reference, but a complete review of all prevailing variants is recommended prior to use. [More info](#)

OTI Annotation: This clone was engineered to express the complete ORF with an expression tag. Expression varies depending on the nature of the gene.

Components: The ORF clone is ion-exchange column purified and shipped in a 2D barcoded Matrix tube containing 10ug of transfection-ready, dried plasmid DNA (reconstitute with 100 ul of water).

Reconstitution Method:

1. Centrifuge at 5,000xg for 5min.
2. Carefully open the tube and add 100ul of sterile water to dissolve the DNA.
3. Close the tube and incubate for 10 minutes at room temperature.
4. Briefly vortex the tube and then do a quick spin (less than 5000xg) to concentrate the liquid at the bottom.
5. Store the suspended plasmid at -20°C. The DNA is stable for at least one year from date of shipping when stored at -20°C.

RefSeq: [NM_001082968.2](#)

RefSeq Size: 5825 bp

RefSeq ORF: 1524 bp

Locus ID: 146691

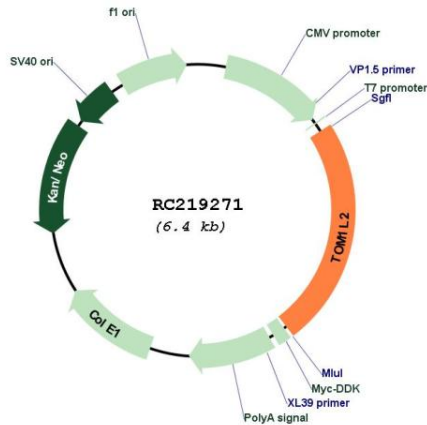
UniProt ID: [Q6ZVM7](#)

Cytogenetics: 17p11.2

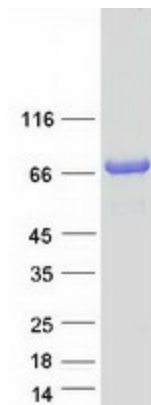
MW: 55.4 kDa

Gene Summary: This gene belongs to a small gene family whose members have an N-terminal VHS domain followed by a GAT domain; domains which typically participate in vesicular trafficking. The canonical protein encoded by this gene also has a C-terminal clathrin binding motif. This protein has been shown to interact with Tollip, clathrin and ubiquitin and is thought to play a role in endosomal sorting. This gene resides in the 3.7 Mb deletion of chromosome region 17p11.2 that is associated with Smith-Magenis syndrome. Alternative splicing results in multiple transcript variants encoding distinct proteins. [provided by RefSeq, Apr 2017]

Product images:



Circular map for RC219271



Coomassie blue staining of purified TOM1L2 protein (Cat# [TP319271]). The protein was produced from HEK293T cells transfected with TOM1L2 cDNA clone (Cat# RC219271) using MegaTran 2.0 (Cat# [TT210002]).